

STA-R-40 ACCUMULATOR IS DESIGNED TO ACCUMULATE AND CONVEY 14" X 18" TRAYS. TRAYS TO BE CAMBRO 1418 CAMTRAY.

BV-10 CONVEYOR IS DESIGNED TO TRANSPORT 20" X 20" RACKS, STACKED AND LOOSE DISHES, TRAYS, AND SIMILAR ITEMS GOING THROUGH THE DISHMACHINE

STA-R-40 TRAY CAPACITY  
28 CARRIERS / 4 TRAYS PER CARRIER  
112 TRAY TOTAL

PLAN VIEW  
SCALE: 1/2" = 1'-0"

NOTES

- [X] VERIFY ROUGH-IN SCHEDULE.
- EACH "[ ] VERIFY" ON THIS DRAWING HAS BEEN CONFIRMED. YOUR FABRICATION APPROVAL OF THIS DRAWING INDICATES YOUR ACCEPTANCE AS SHOWN.
- CONVEYOR IS TO BE U.L. LISTED WITH LABEL AFFIXED.
- BV-10 CONVEYOR WILL BE SHIPPED IN (2) PIECES AS INDICATED IN PLAN VIEW. STA-R-40 ACCUMULATOR WILL BE SHIPPED IN (1) PIECE WITH LEGS AND CARRIERS REMOVED.
- STA-R-40 ACCUMULATOR IS DESIGNED TO ACCUMULATE 14" X 18" TRAYS.
- BV-10 CONVEYOR IS DESIGNED TO TRANSPORT 20" X 20" RACKS, STACKED AND LOOSE DISHES, TRAYS AND SIMILAR ITEMS GOING THROUGH THE DISHWASHING MACHINE.
- [X] VERIFY HEIGHT OF THE TALLEST ITEM TO BE SCRAPPED TO ENSURE ADEQUATE CLEARANCE WHEN TRANSPORTED ON BV-10 UNDER STA-R-40 TRAY CARRIERS.
- BV-10 CONTROL STATION INCLUDES CONVEYOR START/STOP SWITCH & VARIABLE SPEED CONTROL AND BELT WASHER ON/OFF SWITCH.
- STA-R-40 CONTROL STATION INCLUDES START/STOP SWITCH & VARIABLE SPEED CONTROL AND JAM INDICATOR LIGHT.
- BELT WASHER OPERATES AUTOMATICALLY WHILE BELT IS RUNNING. BELT WASHER INCLUDES ON/OFF SWITCH.
- PULPER TO BE SOMAT MODEL #SPC-75S-HT.
- DISHMACHINE TO BE MEIKO MODEL #B-US 281 LPW, L-R.
- WALL DIMENSIONS ARE FOR FINAL, FINISHED WALLS INCLUDING SHEET ROCK, TILE, ETC.

ROUGH-IN SCHEDULE

NOTE: STUB UP FLOOR ROUGH-INS 4" A.F.F.  
ROUGH-INS EXTENDING FROM WALLS TO BE 10" A.F.F.

SYM	QTY	DESCRIPTION
A	3	1 1/2" I.P.S. WASTE
B	2	120V., 60HZ., 1PH., 3/4 HP., 15 AMPS.
C	1	1/2" I.P.S. HOT WATER
D	1	1/2" I.P.S. COLD WATER
E	1	1 1/2" I.P.S. DIFFUSER 2" DIA. HOLE BY CADDY DIFFUSER BY OTHERS
F	1	120V., 60HZ., 1PH., 15 AMPS. LIGHTS FOR SIGHT AND SOUND BARRIER

REVISIONS

REV	DATE	BY	REMARKS
A	03/09/07	DME	CHANGED DISHMACHINE FROM RACK TYPE TO FLIGHT TYPE. RECONFIGURED CONVEYOR TO ACCOMMODATE NEW DISHMACHINE. REMOVED ROLLER SECTIONS.
B	04/11/07	DME	MIRRORRED ROOM LAYOUT.
C	04/27/07	DME	ADDED (2) DOUBLE SIDED MOBILE RACKING SHELVES.
D	08/15/07	DME	CHANGED PULPER TO SALVAJOR TROUGH-VEYOR.
E	09/07/07	DME	CHANGED SALVAJOR TROUGH-VEYOR TO SOMAT SPC-75S.
F	12/17/08	DME	CHANGED DWG# D-1-5129 TO D-1-7202. REVISED PER CUSTOMER DRAWINGS AND FIELD DIMENSIONS.
G	01/05/09	DME	REVISED PER APPROVAL DRAWING FOR FABRICATION.

**CADDY CORPORATION**  
509 SHARPTOWN ROAD  
P.O. BOX 345 BRIDGEPORT NJ 08014  
Tel:(856) 467-4222 Fax:(856) 467-5511

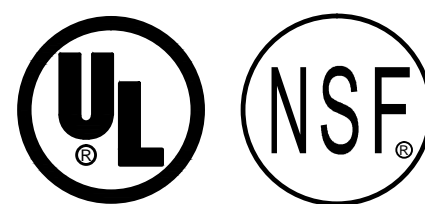
EQUIPMENT SCHEDULE

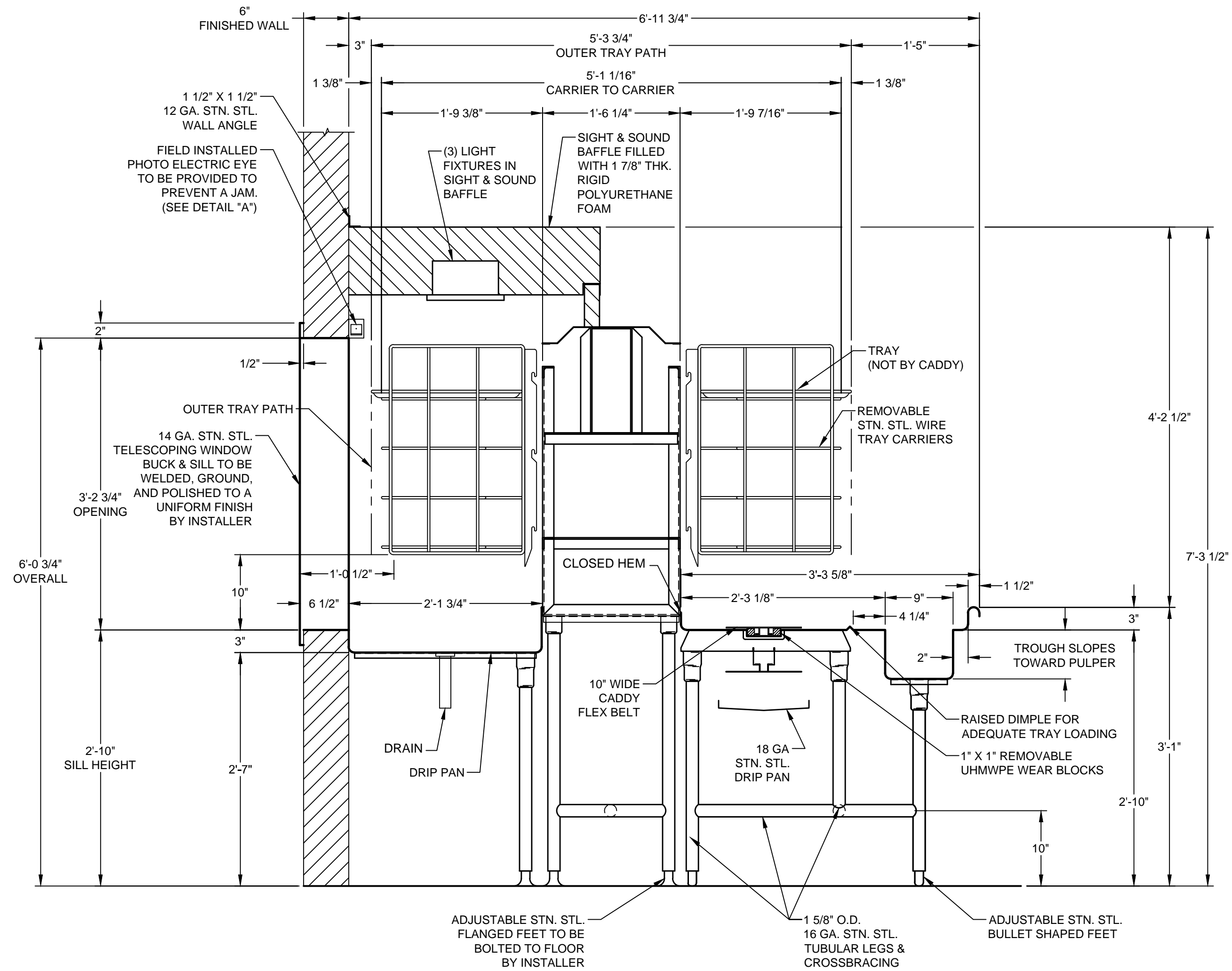
STA-R-40 ACCUMULATOR/  
BV-10 BUSSING-VEYOR

CADDY NO. 7202-1 ITEM NO. 5.002

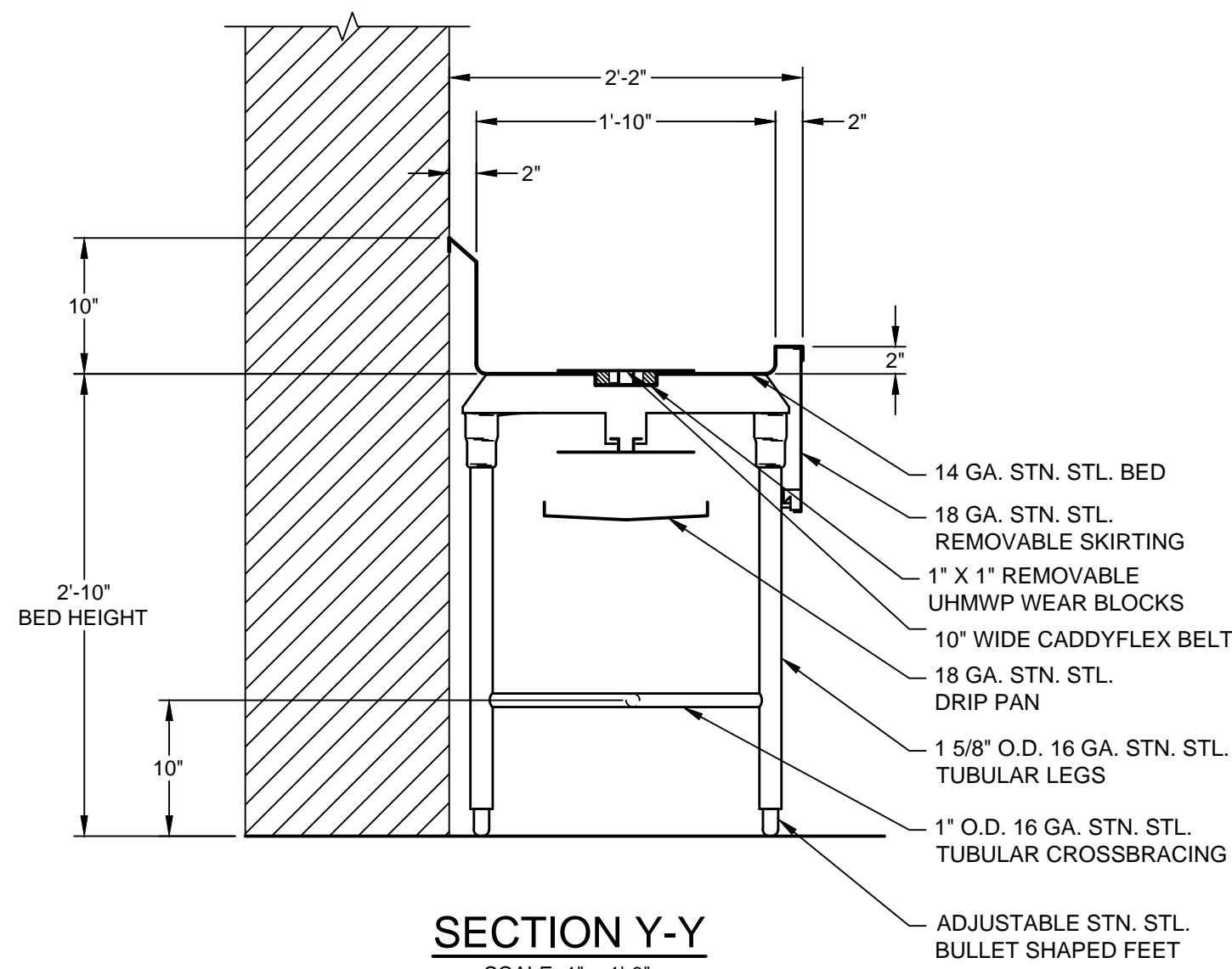
JOB: BLUE CROSS & BLUE SHEILD  
TEXAS RICHARDSON CAMPUS  
LOC: RICHARDSON, TX  
CUST:  
CUST#:

**GENERAL CONTRACT CONDITIONS**  
ELECTRICAL WORK DONE BY CADDY CORPORATION IS EXECUTED IN COMPLIANCE WITH STANDARDS PUBLISHED BY THE UNDERWRITERS LABORATORIES, INC. INsofar AS APPLICABLE, AND THE LATEST EDITION OF THE NATIONAL ELECTRICAL CODE (NEC). CADDY CORPORATION DOES NOT ACCEPT ANY RESPONSIBILITY FOR THE REQUIREMENTS OF ANY REGIONAL AND/OR LOCAL CODES THAT ADD OR DEVIATE FROM THE ACCEPTED STANDARDS OF THE ABOVE AGENCIES. ANY FIELD WORK RELATING TO THE MODIFICATION OF ELECTRIC OR PLUMBING SYSTEMS, TO MEET REGIONAL OR LOCAL CODE REQUIREMENTS IS TO BE DONE BY OTHERS AND WITHOUT BACK CHARGES TO CADDY CORPORATION, UNLESS THESE CONDITIONS WERE PREVIOUSLY BROUGHT TO OUR ATTENTION AND ARE EXPRESSLY INCLUDED IN OUR WRITTEN QUOTATION. ALL WIRING AND PLUMBING AT THE JOB SITE IS THE RESPONSIBILITY OF OTHERS. EQUIPMENT WILL BE CONSTRUCTED IN ACCORDANCE WITH OUR DRAWING(S) WHICH MUST BE APPROVED PRIOR TO FABRICATION. ANY SUBSEQUENT CHANGES REQUIRED MUST BE SUBMITTED TO US IN WRITING AND ACKNOWLEDGED ON OUR STANDARD FORM.

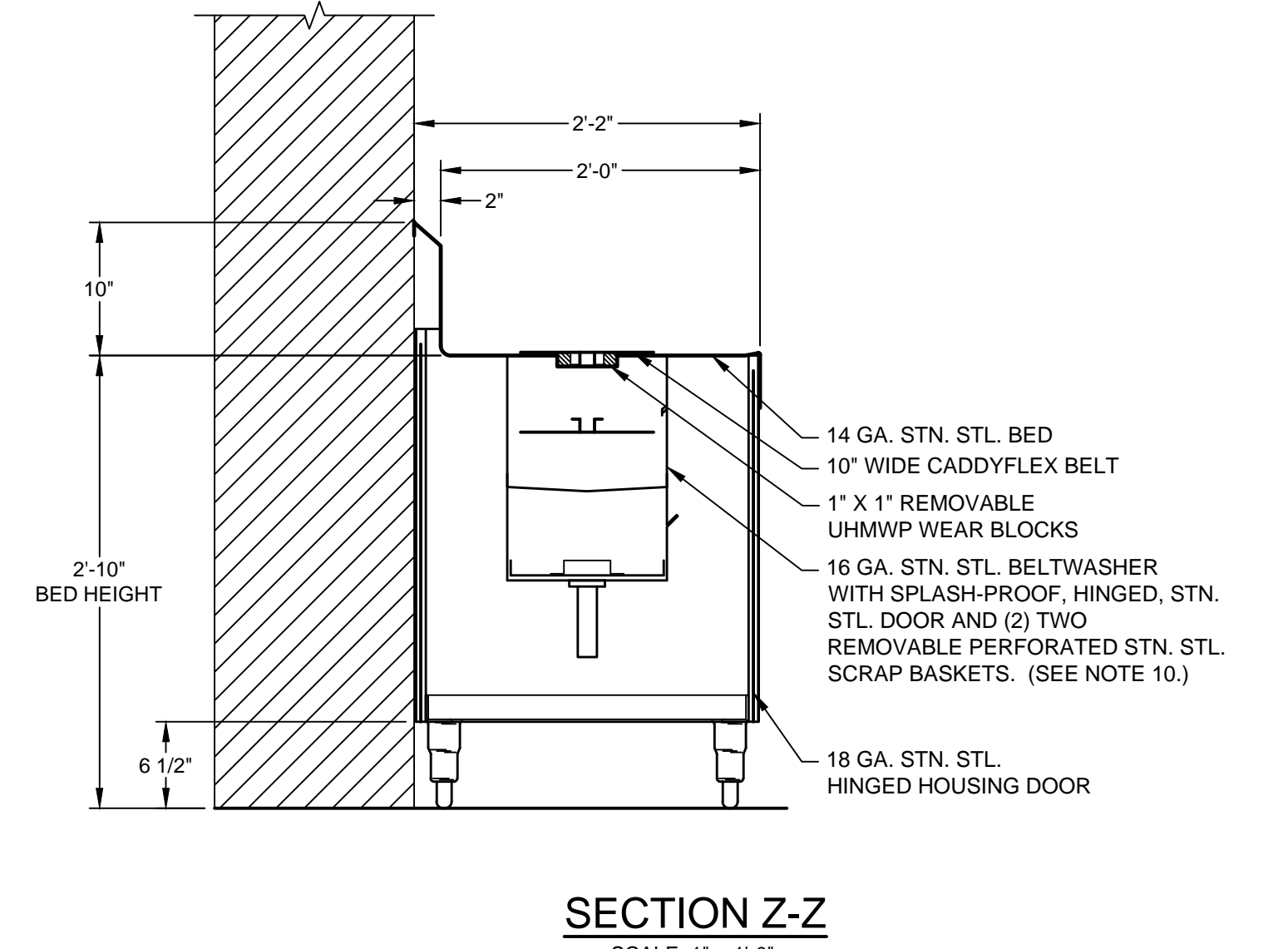




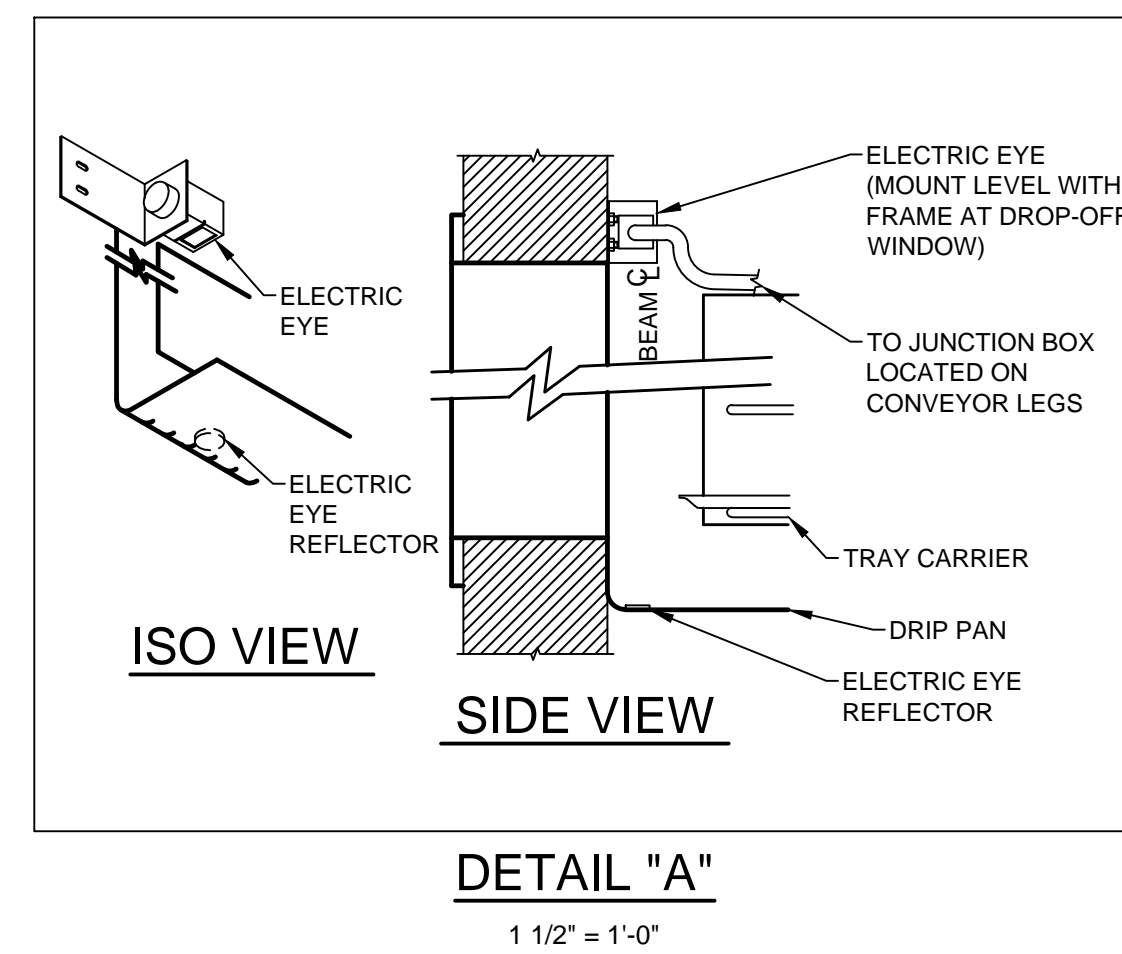
**SECTION X-X**  
SCALE: 1" = 1'-0"



**SECTION Y-Y**  
SCALE: 1" = 1'-0"

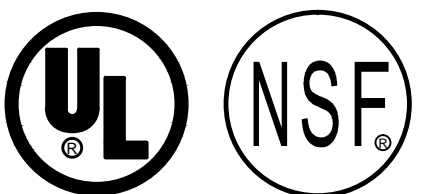


**SECTION Z-Z**  
SCALE: 1" = 1'-0"



**DETAIL "A"**  
SCALE: 1/2" = 1'-0"

**GENERAL CONTRACT CONDITIONS**  
ELECTRICAL WORK DONE BY CADDY CORPORATION IS EXECUTED IN COMPLIANCE WITH STANDARDS PUBLISHED BY THE UNDERWRITERS LABORATORIES, INC. INSOFAR AS APPLICABLE, AND THE LATEST EDITION OF THE NATIONAL ELECTRICAL CODE (NEC). CADDY CORPORATION DOES NOT ACCEPT ANY RESPONSIBILITY FOR THE REQUIREMENTS OF ANY REGIONAL AND/OR LOCAL CODES THAT ADD OR DEVIATED FROM THE ACCEPTED STANDARDS OF THE ABOVE AGENCIES. ANY FIELD WORK RELATING TO THE MODIFICATION OF ELECTRIC OR PLUMBING SYSTEMS, TO MEET REGIONAL OR LOCAL CODE REQUIREMENTS IS TO BE DONE BY OTHERS AND WITHOUT BACK CHARGES TO CADDY CORPORATION, UNLESS THESE CONDITIONS WERE PREVIOUSLY BROUGHT TO OUR ATTENTION AND ARE EXPRESSLY INCLUDED IN OUR WRITTEN QUOTATION.  
ALL WIRING AND PLUMBING AT THE JOB SITE IS THE RESPONSIBILITY OF OTHERS. EQUIPMENT WILL BE CONSTRUCTED IN ACCORDANCE WITH OUR DRAWING(S) WHICH MUST BE APPROVED PRIOR TO FABRICATION. ANY SUBSEQUENT CHANGES REQUIRED MUST BE SUBMITTED TO US IN WRITING AND ACKNOWLEDGED ON OUR STANDARD FORM.



REVISIONS			
REV	DATE	BY	REMARKS
A	03/09/07	DME	CHANGED DISHMACHINE FROM RACK TYPE TO FLIGHT TYPE. RECONFIGURED CONVEYOR TO ACCOMMODATE NEW DISHMACHINE. REMOVED ROLLER SECTIONS.
B	04/11/07	DME	MIRRORRED ROOM LAYOUT.
C	04/27/07	DME	ADDED (2) DOUBLE SIDED MOBILE RACKING SHELVES.
D	08/15/07	DME	CHANGED PULPER TO SALVAJOR TROUGH-VEYOR.
E	09/07/07	DME	CHANGED SALVAJOR TROUGH-VEYOR TO SOMAT SPC-75S.
F	12/17/08	DME	CHANGED DWG# D-1-5129 TO D-1-7202. REVISED PER CUSTOMER DRAWINGS AND FIELD DIMENSIONS.
G	01/05/09	DME	REVISED PER APPROVAL DRAWING FOR FABRICATION.

<b>CADDY CORPORATION</b>	
509 SHARPTOWN ROAD P.O. BOX 345 BRIDGEPORT NJ 08014 Tel: (856) 467-4222 Fax: (856) 467-5511	
<b>EQUIPMENT SCHEDULE</b>	
STA-R-40 ACCUMULATOR/ BV-10 BUSSING-VEYOR	
CADDY NO. 7202-1	ITEM NO. 5.002
JOB: BLUE CROSS & BLUE SHEILD TEXAS RICHARDSON CAMPUS LOC: RICHARDSON, TX CUST: CUST#:	
DATE: 03/06/07	SCALE: AS NOTED
DR BY: DME	APP'D BY: <i>BGN</i>
<b>DWG# D-1-7202</b>	
SHT 2	OF 2