

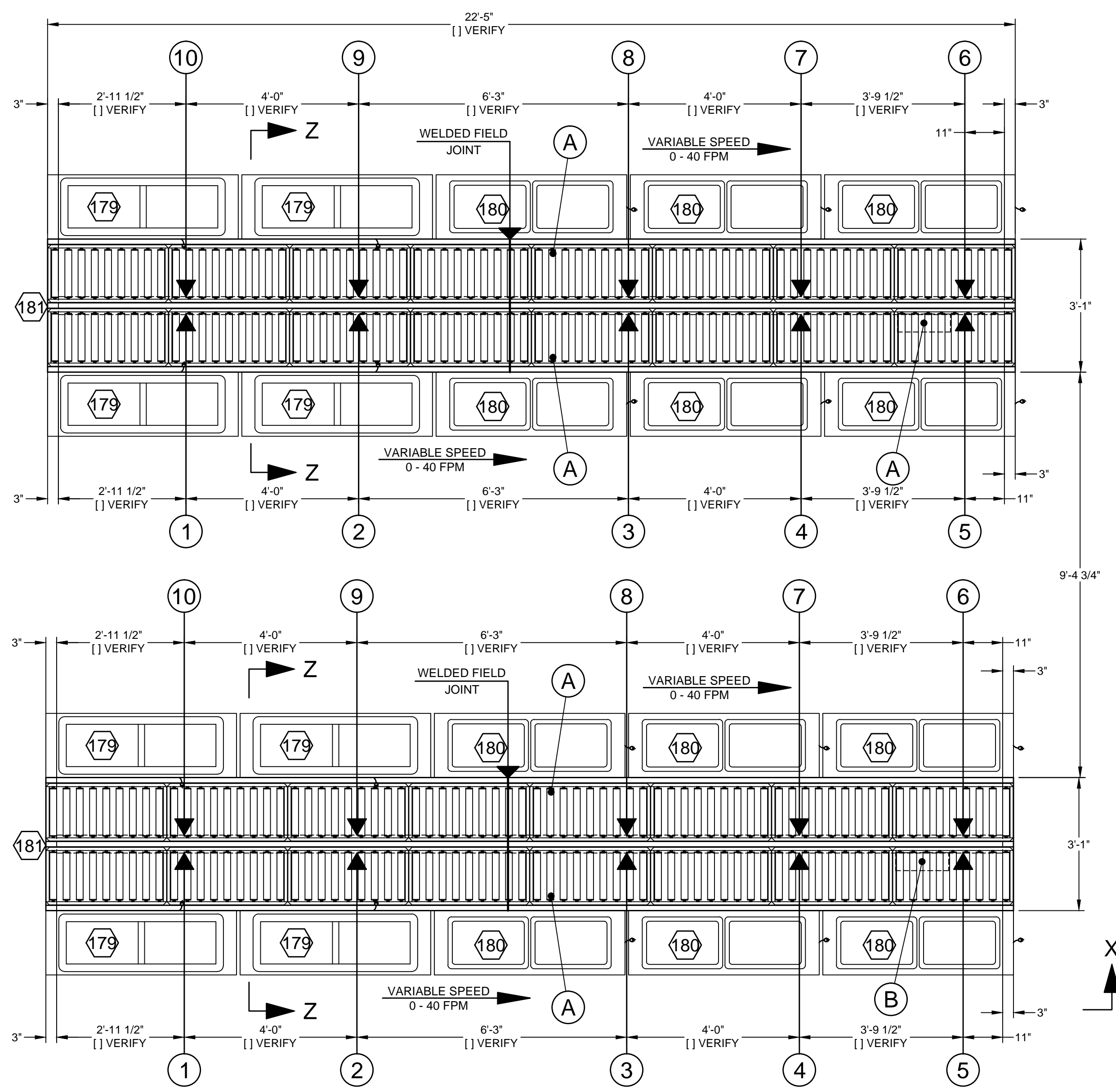
EQUIPMENT SCHEDULE

ITEM	QTY.	DESCRIPTION	MODEL NUMBER
179	8	2 WELL COLD FOOD UNIT	RIF-612
180	12	2 WELL HOT FOOD UNIT	TF-612
181	2	TRAY MAKE-UP CONVEYOR	RCF-2

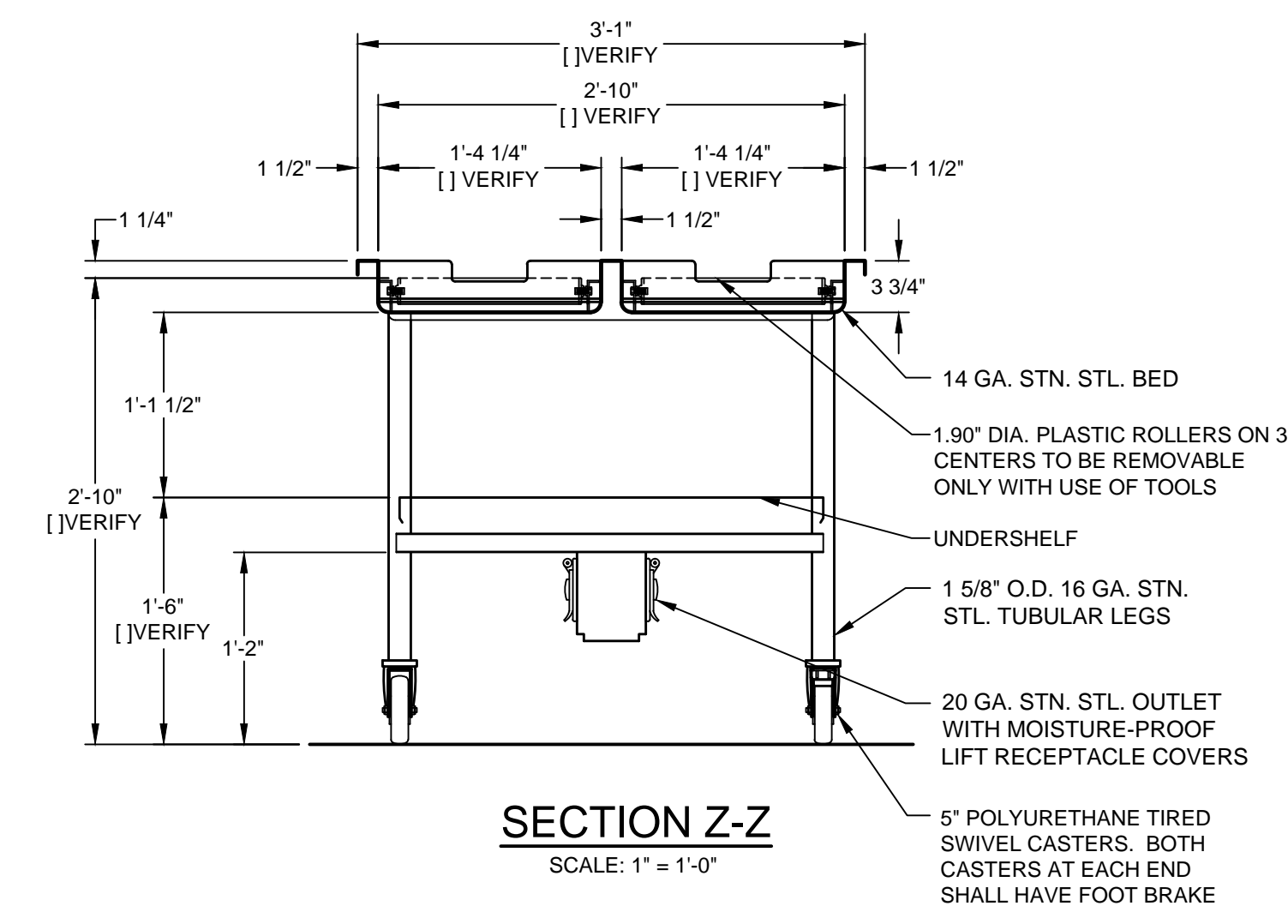
RCF-2 CONVEYOR IS DESIGNED TO TRANSPORT UP TO 16" WIDE FLAT BOTTOM TRAYS. SPECIFY SIZE & MAKE OF TRAY. PLEASE PROVIDE CADDY WITH SAMPLE TRAY.

PRISON PACKAGE

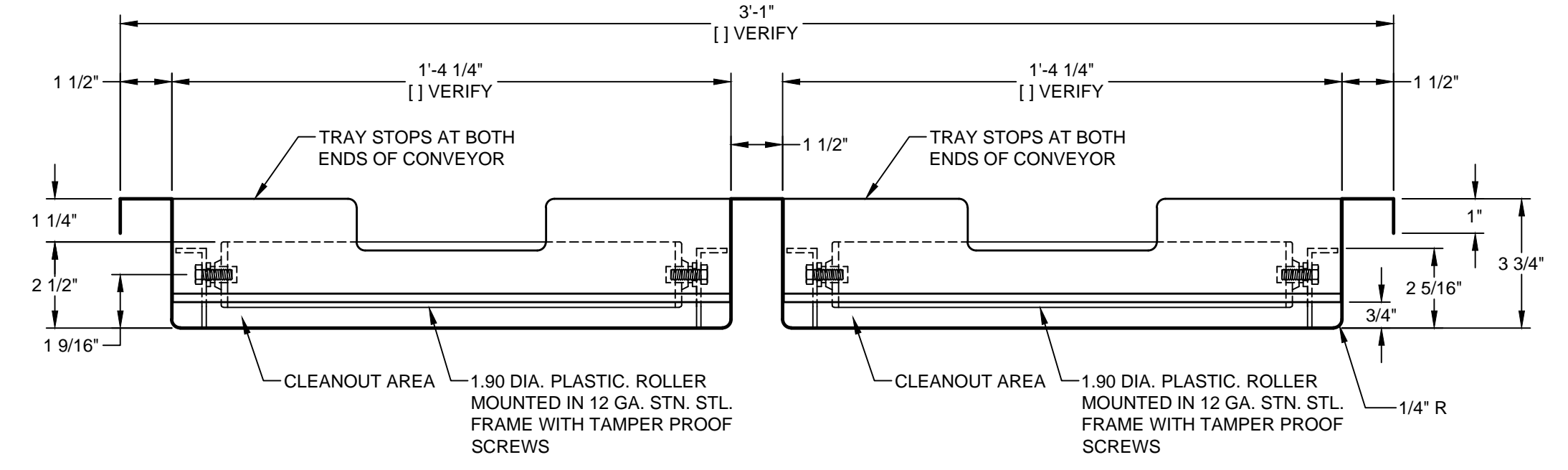
- ALL EXPOSED FASTENERS ARE TO BE TAMPER-PROOF SCREWS
- LOAD CENTER DOOR LOCK



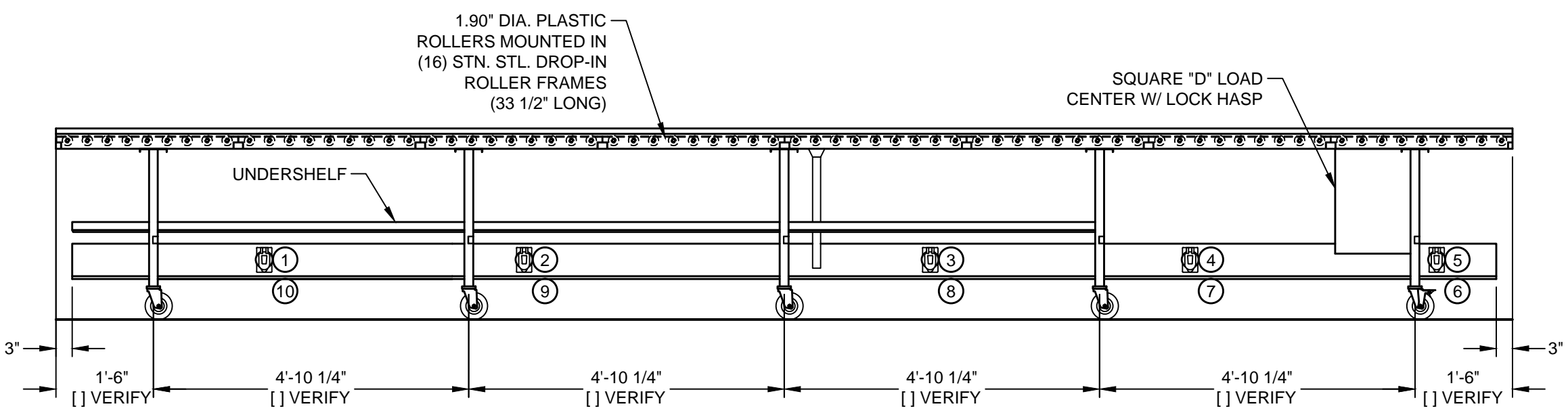
PLAN VIEW
SCALE: 1/2" = 1'-0"



SECTION Z-Z
SCALE: 1" = 1'-0"



TYPICAL END VIEW
SCALE: 1" = 1'-0"



ELEVATION X-X
SCALE: 1/2" = 1'-0"

NOTE: ELECTRICAL DATA NEEDED PRIOR TO FABRICATION.

- IF FIELD JOINTS ARE REQUIRED IN WIREWAY, FINAL CONNECTION IS NOT BY CADDY.
- PLEASE SPECIFY MAKE, MODEL NO., AND ELECTRICAL CHARACTERISTICS OF ALL ITEMS PLUGGING INTO WIREWAY. ALSO PLEASE SPECIFY LOCATION OF ALL OUTLETS ON EITHER SIDE OF WIREWAY.
- LOAD CENTER SIZE AND INPUT AMPERAGE SHALL BE DETERMINED WHEN OUTLET SCHEDULE IS COMPLETE.

NOTES

- [] VERIFY ROUGH-IN SCHEDULE.
- EACH [] VERIFY ON THIS DRAWING MUST BE CONFIRMED. YOUR FABRICATION APPROVAL OF THIS DRAWING WILL INDICATE YOUR ACCEPTANCE AS SHOWN.
- CONVEYOR IS TO BE E.T.L. LISTED WITH LABEL AFFIXED.
- K.E.C. TO SPECIFY LOCATION OF ALL FIELD JOINTS IN PLAN VIEW. PLEASE ALLOW FOR SUFFICIENT ACCESS INTO BUILDING AND CONVEYOR AREA.
- RCF CONVEYOR IS DESIGNED TO TRANSPORT UP TO 16" WIDE TRAYS. [] VERIFY.
- ELECTRICAL INPUT AMPERAGE SHOWN IS BASED ON INFORMATION AVAILABLE AT TIME OF SUBMISSION. CHANGES IN DATA MAY NECESSITATE CHANGE OF INPUT AMPERAGE.
- RECEPTACLES IN WIREWAY/PEDESTALS MAY ONLY BE USED UP TO 80% OF THEIR CATALOG RATINGS SO AS TO COMPLY WITH THE NATIONAL ELECTRICAL CODE (NEC)*. ANYTHING IN EXCESS MUST BE OMITTED FROM THE UNIT OR ADDITIONAL ROUGH-INS PROVIDED.
- [] VERIFY VOLTAGE, PHASE, WATTAGE AND OUTLET NOMENCLATURE IN OUTLET SCHEDULE; ALSO LOCATION OF OUTLETS IN PLAN VIEW.
- SEE ELECTRICAL DATA NOTES: I, II, III.

ELECTRICAL OUTLET SCHEDULE

OUTLET NO.	ITEM NO.	ITEM DESCRIPTION	MAKE	MODEL NO.	VOLTS	HZ	Ø	UNIT RATG.	OUTLET NOMENCLATURE				
								KW/HP	AMP	NEMA NO.	HUBBELL NO.	CAT.RATG.	NEC.RATG*.
1	179	COLD FOOD UNIT	CADDY	RIF-612	120	60	1	5.8	5-15R	5261	15.0	12.0	
2	179	COLD FOOD UNIT	CADDY	RIF-612	120	60	1	5.8	5-15R	5261	15.0	12.0	
3	180	HOT FOOD UNIT	CADDY	TF-612	208	60	1	11.4	6-15R	5661	15.0	12.0	
4	180	HOT FOOD UNIT	CADDY	TF-612	208	60	1	11.4	6-15R	5661	15.0	12.0	
5	180	HOT FOOD UNIT	CADDY	TF-612	208	60	1	11.4	6-15R	5661	15.0	12.0	
6	180	HOT FOOD UNIT	CADDY	TF-612	208	60	1	11.4	6-15R	5661	15.0	12.0	
7	180	HOT FOOD UNIT	CADDY	TF-612	208	60	1	11.4	6-15R	5661	15.0	12.0	
8	180	HOT FOOD UNIT	CADDY	TF-612	208	60	1	11.4	6-15R	5661	15.0	12.0	
9	179	COLD FOOD UNIT	CADDY	RIF-612	120	60	1	5.8	5-15R	5261	15.0	12.0	
10	179	COLD FOOD UNIT	CADDY	RIF-612	120	60	1	5.8	5-15R	5261	15.0	12.0	

REVISIONS

REV	DATE	BY	REMARKS
A			
B			
C			

CADDY CORPORATION
509 Sharptown Road
Bridgeport, NJ 08014-0345
Tel: 856-467-4222
Internet: www.caddycorp.com
P.O. Box 345
Fax: 856-467-5511

EQUIPMENT SCHEDULE

(2) RCF-2 TRAY MAKE-UP CONVEYOR (MOBILE, 22'-5" LONG)

CADDY NO. ITEM NO.

JOB:
LOC:
CUST:
CUST #:

ROUGH-IN SCHEDULE

NOTE: ALL ROUGH-INS TO BE 4" AFF

SYM	QTY	DESCRIPTION
A	4	1 1/2" I.P.S. WASTE
B	2	120/208V., 60HZ., 3PH., 75AMPS

SPECIFY LOCATION OF ALL FIELD JOINTS IN PLAN VIEW. PLEASE ALLOW FOR SUFFICIENT ACCESS INTO BUILDING AND CONVEYOR AREA.

DWG#

SHT 1
OF 1

18/21B