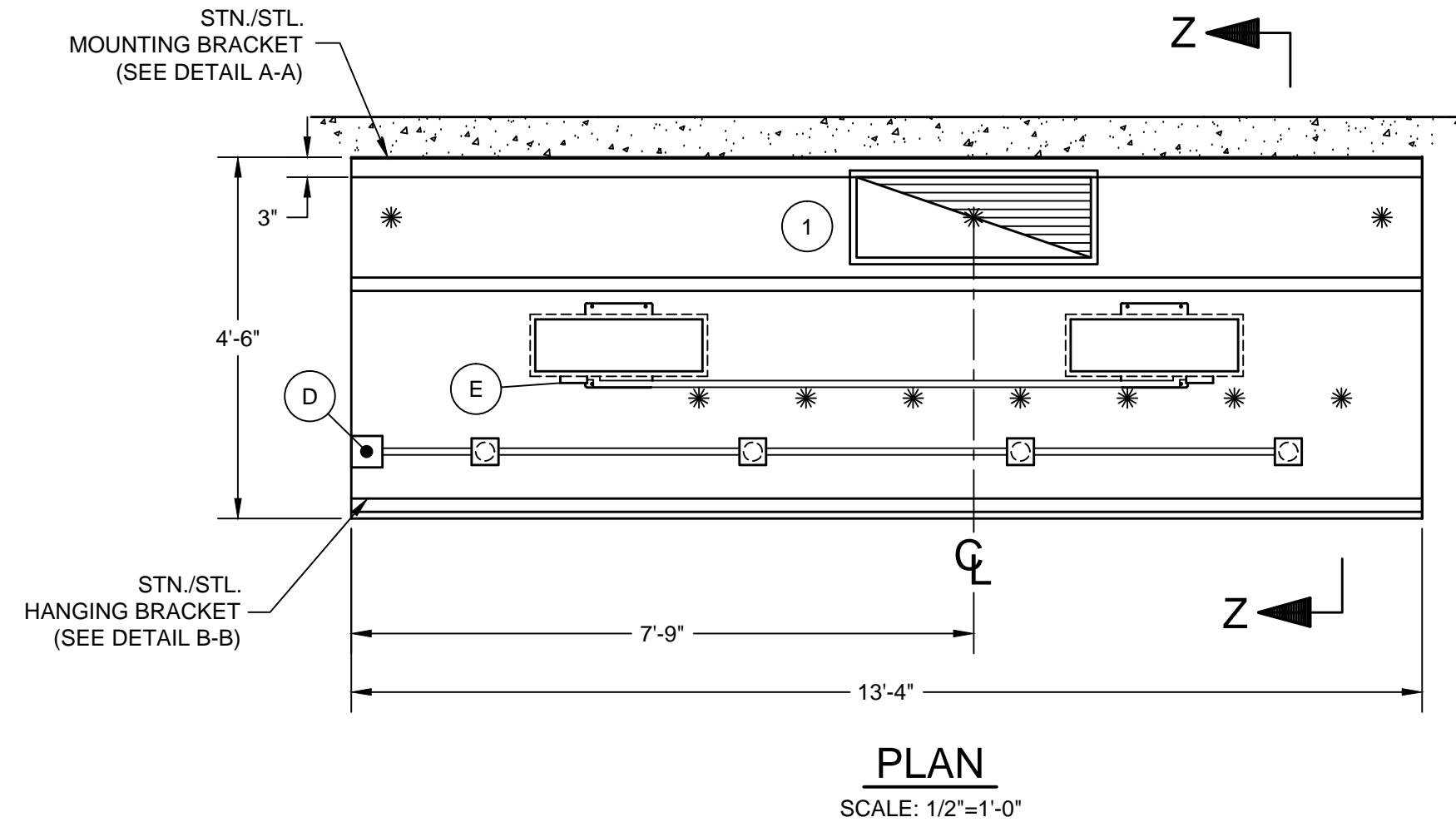


NOTE:  
K.E.C. MUST VERIFY THE EXACT DIMENSION OF THE COOKING EQUIPMENT FROM EITHER THE WALL OR FROM THE FRONT OF THE HOOD, SO CADDY MAY PROPERLY LOCATE THE FIRE PROTECTION NOZZLES AT TIME-OF-FABRICATION IN THE FACTORY. IF EQUIPMENT IS NOT LOCATED AS SHOWN AND THE DRAWING IS APPROVED FOR FABRICATION, THEN NOZZLES MUST BE RELOCATED AT THE EXPENSE OF OTHERS.

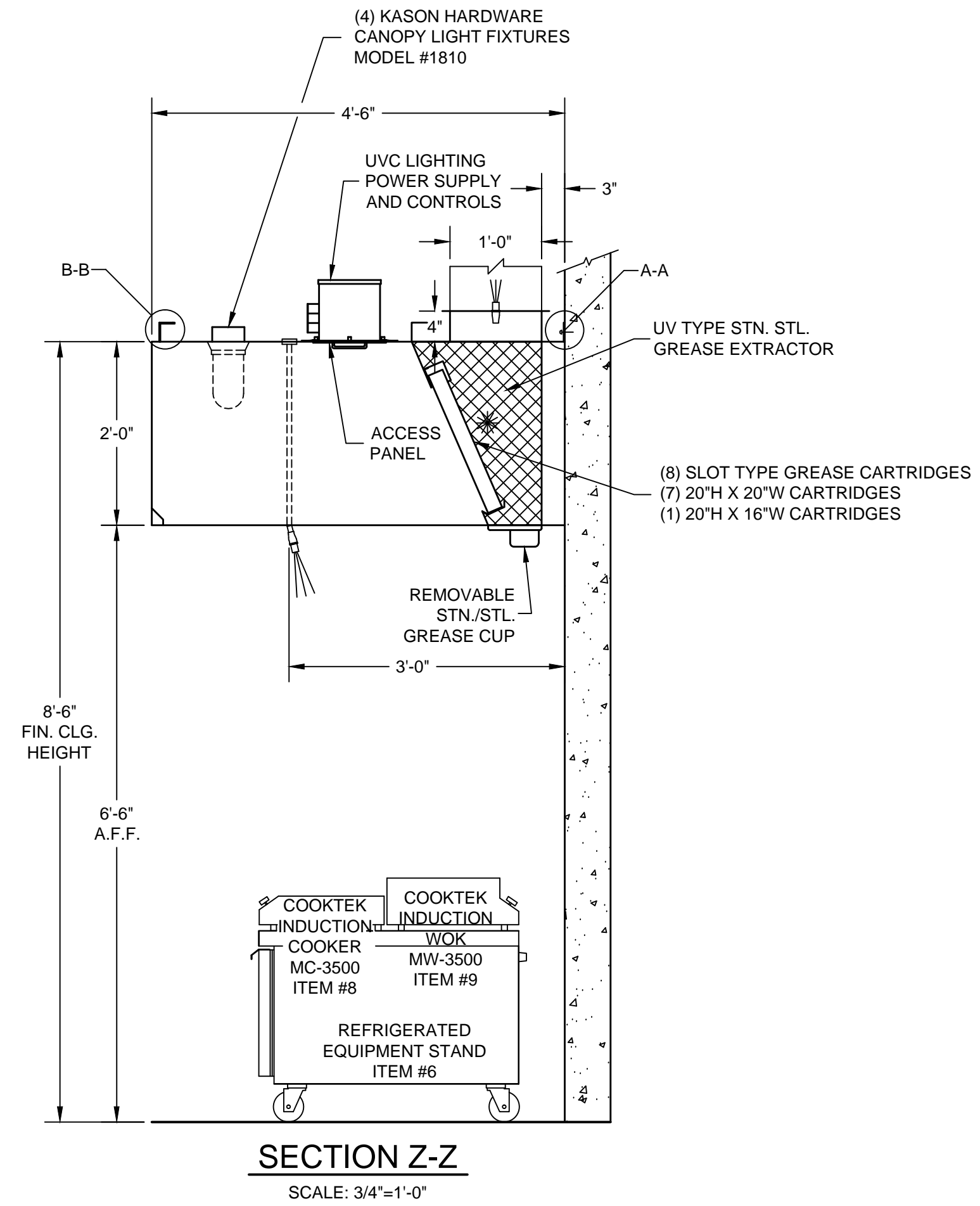
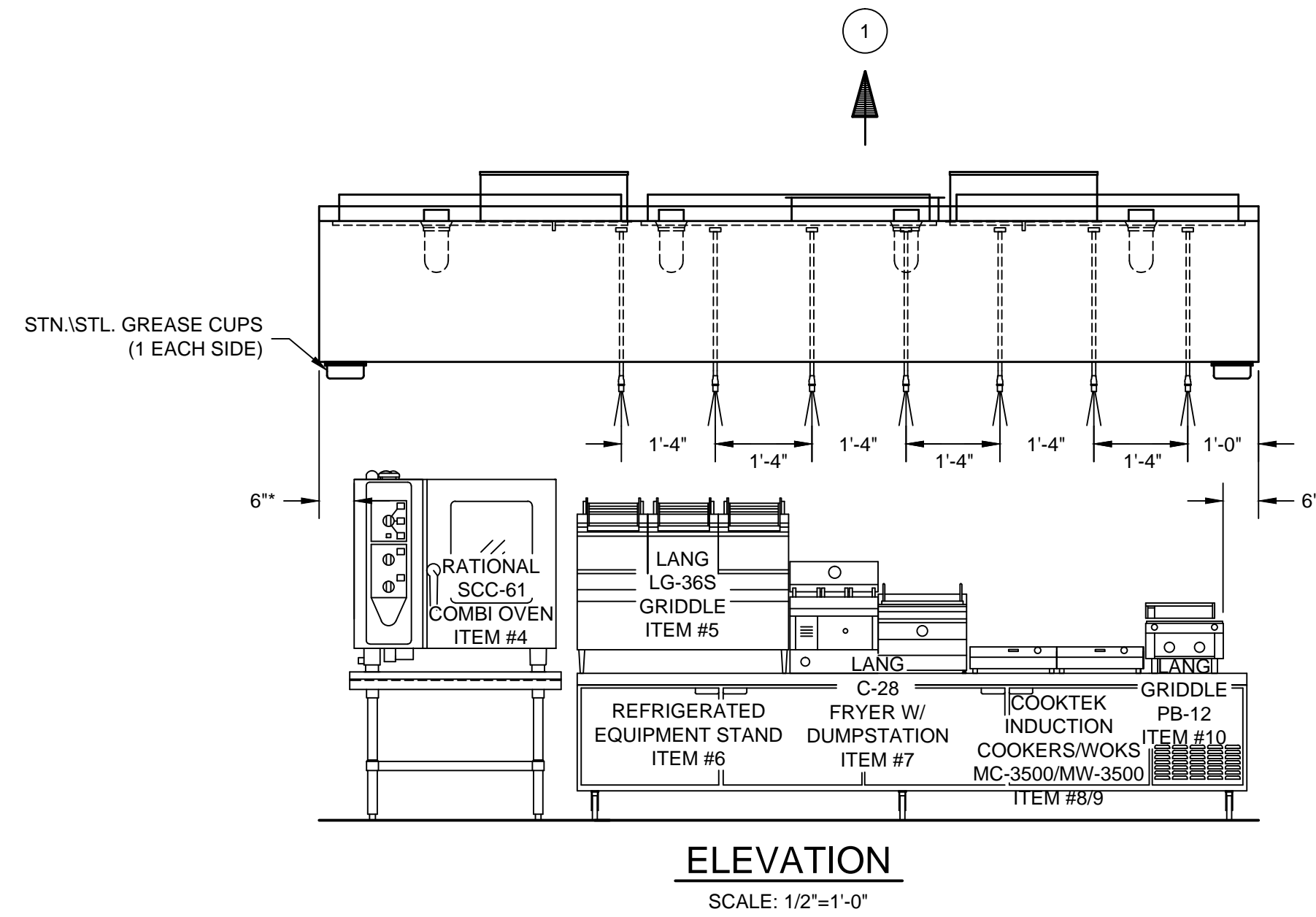
CONTRACTOR NOTE:  
ALLOW SUFFICIENT ACCESS ON TOP OF VENTILATOR TO SERVICE COMPONENTS AND UTILITIES

MAKE-UP AIR NOTE:  
AIR TEMPERATURE SHOULD RANGE FROM 60° TO 65° F, BUT MAY BE AS LOW AS 50° F DEPENDING ON AIR VOLUME, DISTRIBUTION, AND INTERNAL HEAT LOAD



TOTAL EXHAUST : 3,715 C.F.M.

1 12" X 25" EXHAUST DUCT  
3,715 C.F.M. @ 1.30" S.P.

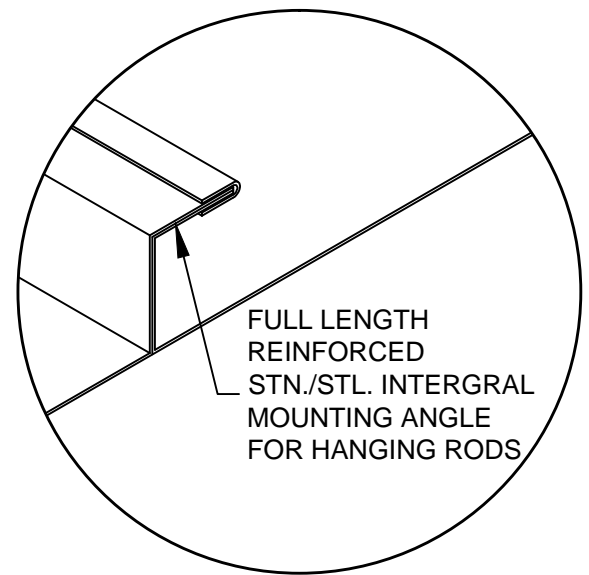
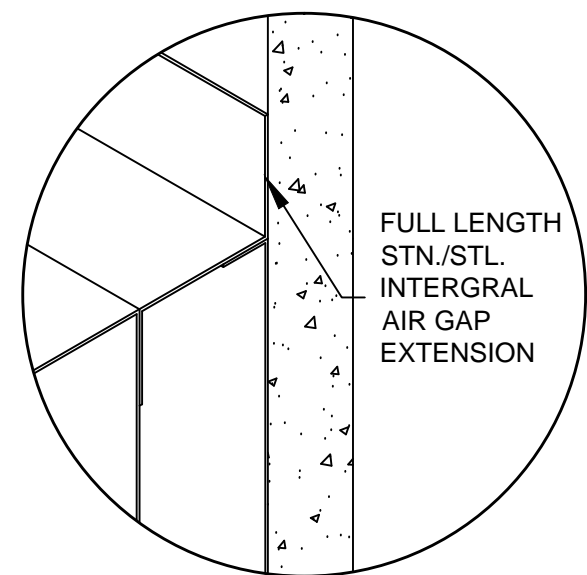


**ELECTRICAL NOTES:**

1. LIGHT FIXTURES, VAPORPROOF, U.L. LISTED, FURNISHED, INSTALLED AND WIRED TO J-BOX (D) BY CADDY. RECONNECTED ON JOBSITE BY ELECTRICAL CONTRACTOR.
2. LIGHT SWITCH FOR LIGHT FIXTURE WITH 120 VOLTS A.C. SERVICE BY ELECTRICAL CONTRACTOR.
3. UVC LIGHT CONTROL BOX FURNISHED AND INSTALLED BY CADDY. 120V SUPPLY AND INTERLOCK WIRING TO EACH JUNCTION BOX (E) BY ELECTRICAL CONTRACTOR.

**GENERAL NOTES**

- EXHAUST AIR REQUIREMENTS:**
1. EXHAUST C.F.M. BASED ON 279 C.F.M. PER LINEAR FOOT.
  2. EXHAUST STATIC PRESSURE IS 1.30" W.G. AT DUCT TAKE-OFF COLLAR. TOTAL DUCT STATIC MUST BE ADDED. STATIC BASED ON OPERATION AT MEAN SEA LEVEL.
  3. DUCT SIZE BASED ON 1800 F.P.M..
- EXHAUST FAN REQUIREMENTS:**
1. TYPE - INDUCED DRAFT, SQUIRREL CAGE, BACKWARD INCLINED BLADES, EXHAUST FAN DISCHARGE SHOULD BE VERTICAL, AWAY FROM AIR INTAKES. FAN FURNISHED BY OTHERS.
  2. EXHAUST FAN MUST BE FURNISHED WITH A MAGNETIC STARTER WITH 120 VOLT HOLDING COIL. STARTER FURNISHED BY OTHERS.
- MAKE-UP AIR REQUIREMENTS:**
1. AIR EXHAUSTED FROM KITCHEN MUST BE REPLACED - WITH DISTRIBUTION CONTROLLED TO PROVIDE FOR TOTAL KITCHEN VENTILATION AND TO ESTABLISH NECESSARY AIR PATTERNS FOR PROPER PERFORMANCE OF THE VENTILATORS. AIR DISTRIBUTION SYSTEMS SHALL BE IN ACCORDANCE WITH ALL GOVERNING CODES.
  1. MAKE-UP AIR MUST BE TEMPERED - HEATED OR COOLED - CONSISTENT WITH THE STYLE OF HOOD, HEAT LOAD, CLIMATIC CONDITIONS AND APPLICABLE CODES.
- INSTALLATION:**
1. VENTILATORS TO BE INSTALLED IN ACCORDANCE WITH ALL CODES.
- CONTRACTORS MUST REVIEW APPLICABLE CODES WITH CODE AUTHORITIES BEFORE APPROVING DRAWINGS FOR FABRICATION. SPECIAL ATTENTION MUST BE GIVEN TO CODE REGULATIONS RELATIVE TO CLEARANCES FROM SURROUNDING COMBUSTIBLE CONSTRUCTION (WALL, CEILINGS, ETC.).**
1. ALL DUCTWORK BEYOND VENTILATOR DUCT TAKE-OFF COLLAR TO BE PROVIDED AND INSTALLED BY OTHERS, IN ACCORDANCE WITH JURISDICTIONAL CODES. DUCTS MUST BE MECHANICALLY STRONG, GREASE AND WATER TIGHT.
  2. MOUNTING RODS FURNISHED AND INSTALLED BY OTHERS.
- CONSTRUCTION:**
1. VENTILATORS TO BE MANUFACTURED IN STRICT ACCORDANCE WITH CADDY SPECIFICATIONS.
  2. VENTILATORS CONSTRUCTED OF 18 GA. STAINLESS STEEL.
- FIRE PROTECTION:**
1. SURFACE FIRE PROTECTION PROVIDED AND INSTALLED BY CADDY (ANSUL PIRANHA)
  2. CAUTION: SURFACE FIRE PROTECTION SYSTEM INSTALLATION MUST BE COORDINATED WITH CADDY TO PREVENT SYSTEMS INTERFERENCE WITH VENTILATOR'S OPERATION/PERFORMANCE. IMPROPER INSTALLATION MAY VOID U.L. LISTINGS OF THE EQUIPMENT.
  3. IMPORTANT NOTE: NFPA 96 REQUIRES THAT ALL GAS AND ELECTRIC COOKING EQUIPMENT THAT IS PROTECTED BY A SURFACE FIRE PROTECTION SYSTEM MUST AUTOMATICALLY SHUT OFF UPON ACTIVATION OF THE SYSTEM.
- ELECTRICAL REQUIREMENTS:**
1. LIGHT FIXTURE BULBS PROVIDED AND INSTALLED BY OTHERS.



K.E.C. TO VERIFY ALL MAKES AND MODELS OF COOKING EQUIPMENT, REVIEW PLAN FOR PROPER LINE-UP PRIOR TO FABRICATION OF VENTILATORS, AND TO NOTIFY CADDY OF ANY CHANGES.

\* - MINIMUM OVERHANG FROM EDGE OF COOKING EQUIPMENT TO END OF HOOD MUST BE 6"

**INSTALLATION INFORMATION**

ALLOW SUFFICIENT ACCESS TO BRING VENTILATOR INTO KITCHEN AREA  
MAXIMUM VENTILATOR DIMENSIONS  
13'-4" LONG x 4'-6" WIDE x 32'-1/2" HIGH  
ESTIMATED TOTAL HANGING WEIGHT: 1,627 LBS.

VENTILATOR TO BE SHIPPED IN (1) UNIT.  
ALL PLUMBING AND ELECTRICAL DISCONNECTED FOR SHIPMENT. RECONNECTED IN FIELD BY PLUMBING AND ELECTRICAL CONTRACTORS.

**GENERAL CONTRACT CONDITIONS**  
ELECTRICAL WORK DONE BY CADDY CORPORATION IS EXECUTED IN COMPLIANCE WITH STANDARDS PUBLISHED BY THE UNDERWRITER'S LABORATORIES, INC. INsofar AS APPLICABLE, AND THE LATEST EDITION OF THE NATIONAL ELECTRICAL CODE (NEC). CADDY CORPORATION DOES NOT ACCEPT ANY RESPONSIBILITY FOR THE REQUIREMENTS OF ANY REGIONAL AND/OR LOCAL CODES THAT ADD OR DEVIATED FROM THE ACCEPTED STANDARDS OF THE ABOVE AGENCIES. ANY FIELD WORK RELATING TO THE MODIFICATION OF ELECTRIC OR PLUMBING SYSTEMS, TO MEET REGIONAL OR LOCAL CODE REQUIREMENTS IS TO BE DONE BY OTHERS AND WITHOUT BACK CHARGES TO CADDY CORPORATION, UNLESS THESE CONDITIONS WERE PREVIOUSLY BROUGHT TO OUR ATTENTION AND ARE EXPRESSLY INCLUDED IN OUR WRITTEN QUOTATION.  
ALL WIRING AND PLUMBING AT THE JOB SITE IS THE RESPONSIBILITY OF OTHERS. EQUIPMENT WILL BE CONSTRUCTED IN ACCORDANCE WITH OUR DRAWING(S) WHICH MUST BE APPROVED PRIOR TO FABRICATION. ANY SUBSEQUENT CHANGES REQUIRED MUST BE SUBMITTED TO US IN WRITING AND ACKNOWLEDGED ON OUR STANDARD FORM.

ROUGH-IN SCHEDULE		DATE	SCALE
SYM	QTY	DESCRIPTION	AS NOTED
D	1	120V, 60HZ, 1PH, 0.40 K.W. CONNECTED LOAD	
E	1	120V, 60HZ, 1PH, 1.44 K.W. CONNECTED LOAD	

REVISIONS			
REV	DATE	BY	REMARKS
A	9-10-04	AGR	REVISED PER APPROVED DRAWINGS RECEIVED ON 09/09/04
B	9-23-04	AGR	REVISED PER PHONE CONVERSATION WITH GARY M. ON 09/23/04
C	10-7-04	SWL	NO CHANGES TO THIS SHEET

**CADDY AirSystems**  
509 SHARPTOWN ROAD  
P.O. BOX 345 BRIDGEPORT NJ 08014  
Tel:(856) 467-4222 Fax:(856) 467-5511

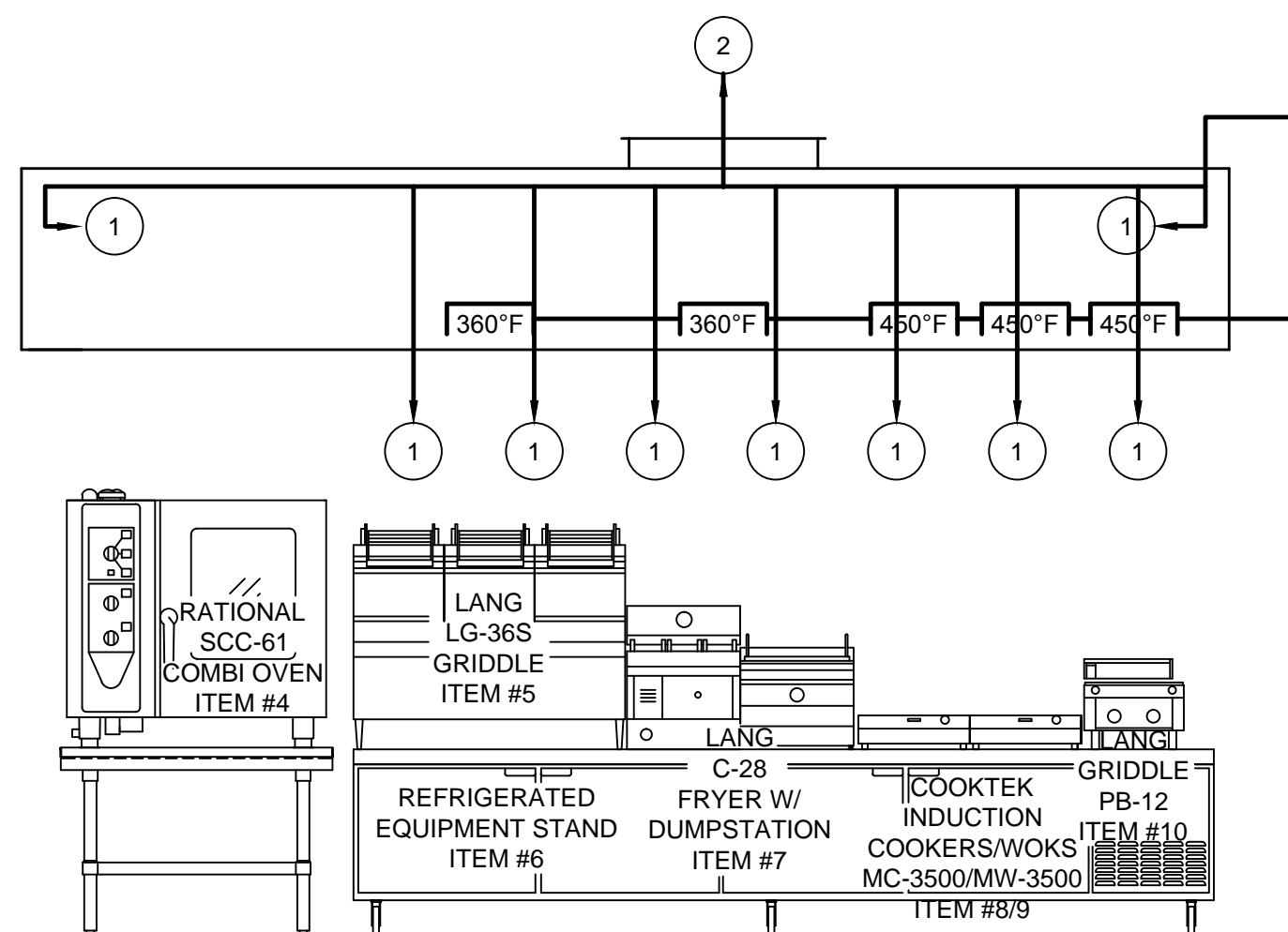
**EQUIPMENT SCHEDULE**

SH-BCU-54

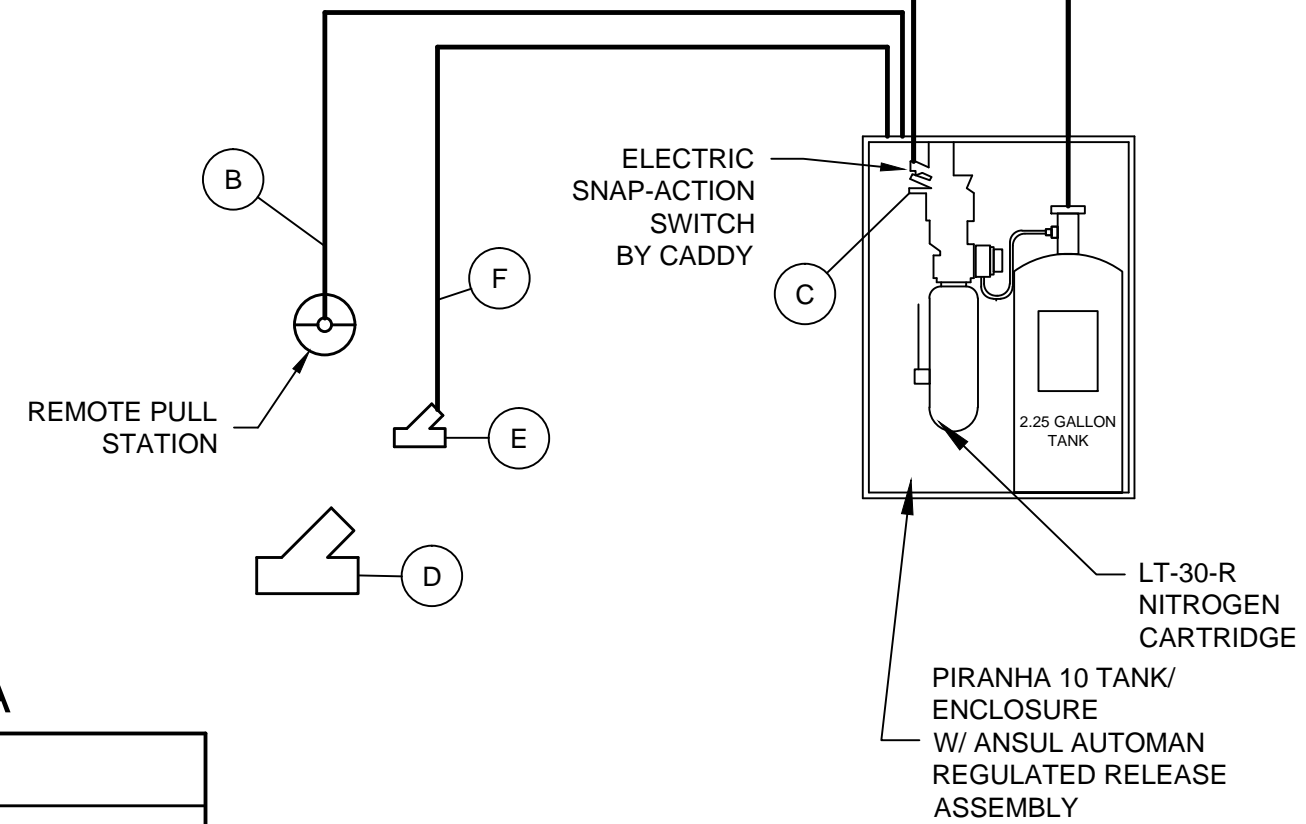
CADDY NO. 0947 ITEM NO. 1

JOB: MIAMI VALLEY HOSPITAL  
LOC:  
CUST:  
CUST#:

**DWG# D-1-0947** SHT 1 OF 8



**ELEVATION**  
SCALE: 1/2"=1'-0"

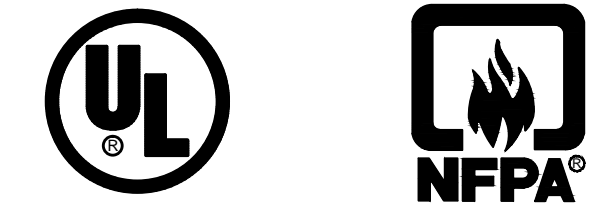


ANSUL ROUGH-IN	
SYM	DESCRIPTION
A	3/8" SCH 40 BLACK IRON PIPE
B	1/2" EMT CONDUIT
C	MICRO SWITCH FOR ELECTRIC SHUT-DOWN AND/OR ALARM BY CADDY WIRING BY OTHERS.
D	120/1/60 SOLENOID TYPE GAS VALVE PROVIDED AND INSTALLED BY P.C. WIRED BY E.C.
E	1" TAMPER-PROOF WATER VALVE, FURNISHED & INSTALLED BY P.C.
F	1" DEDICATED POTABLE WATER SUPPLY TO ANSUL SYSTEM BY P.C. ( 33 PSI MIN. AT ANSUL AUTOMAN OR ACTUATOR, 20 GPM MIN. FLOW RATE FOR PIRANHA 10 SYSTEM)
G	1/4" SCH 40 BLACK IRON PIPE

ANSUL NOZZLE DATA		
SYM	QTY	DESCRIPTION
1	9	ANSUL #AP
2	1	ANSUL #DL

**INSTALLATION INFORMATION**

ALLOW SUFFICIENT AREA TO MOUNT ANSUL ON CLOSEST STRUCTURAL WALL TO VENTILATOR  
 MAXIMUM ANSUL ENCLOSURE DIMENSIONS  
 21" LONG x 7 1/2" DEEP x 23 1/2" HIGH  
 ESTIMATED TOTAL HANGING WEIGHT: 75 LBS.  
 ENCLOSURE MOUNTING HEIGHT 7'-0"



**ANSUL PIRANHA 10 SYSTEM**  
FOR VENTILATOR ITEM #1

**ANSUL PIRANHA REQUIREMENTS:**

THE WATER SUPPLY FOR PIRANHA SYSTEMS SHALL BE DEDICATED, BUT THE FOOD SERVICE WATER SUPPLY MAY SUPPLY PLUMBING FIXTURES WITHIN CLOSE OCCUPANCY.

THE DEDICATED PIRANHA SUPPLY MUST BE CONNECTED DOWNSTREAM FROM THE PRIMARY WATER VALVE FOR THE FOOD SERVICE WATER SUPPLY.

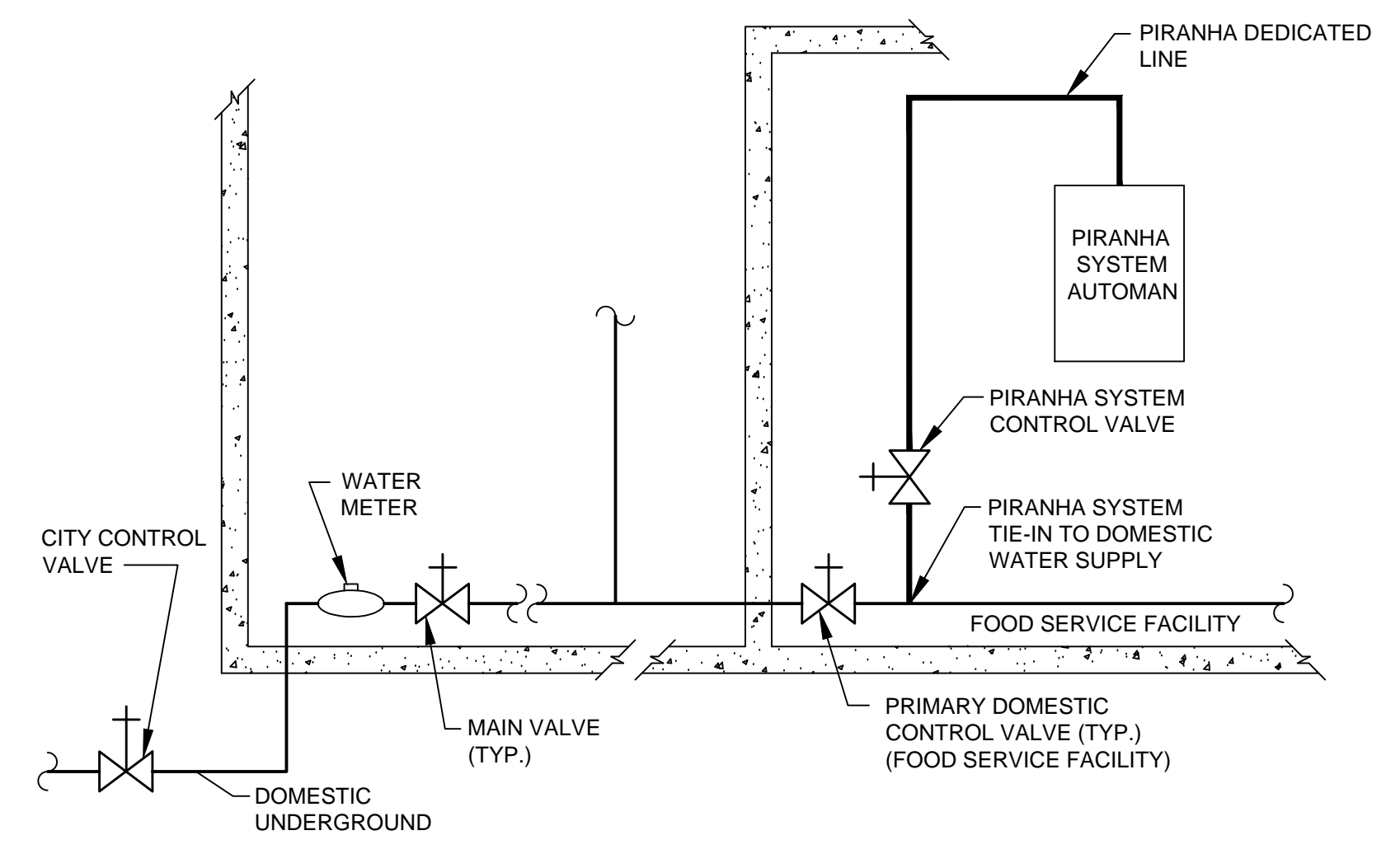
THERE MUST BE NO SHUT-OFF VALVES BETWEEN THE PRIMARY WATER VALVE AND THE WATER VALVES FOR THE PIRANHA SYSTEMS.

MAXIMUM WATER PRESSURE AT THE PRESSURE TEST GAUGE MUST NOT EXCEED 100 PSI.

EACH LINE MUST INCLUDE A FULL FLOW, LOCKED OPEN, TAMPER PROOF SHUT-OFF VALVE.

ALL MINIMUM GPM AND PSI MUST BE MET WITH SIMULTANEOUS USAGE OF ALL WATER USAGE POINTS WHICH ARE CONNECTED TO THE FOOD SERVICE WATER SUPPLY.

PRESSURE REDUCING VALVE, IF REQUIRED, TO BE FURNISHED AND INSTALLED BY P.C.



REVISIONS			
REV	DATE	BY	REMARKS
A	9-10-04	AGR	REVISED PER APPROVED DRAWINGS RECEIVED ON 09/09/04
B	9-24-04	AGR	REVISED PER PHONE CONVERSATION WITH GARY M. ON 09/23/04
C	10-7-04	SWL	NO CHANGES TO THIS SHEET

**CADDY AirSystems**  
 509 SHARPTOWN ROAD  
 P.O. BOX 345 BRIDGEPORT NJ 08014  
 Tel:(856) 467-4222 Fax:(856) 467-5511

**EQUIPMENT SCHEDULE**

ANSUL PIRANHA 10 SYSTEM

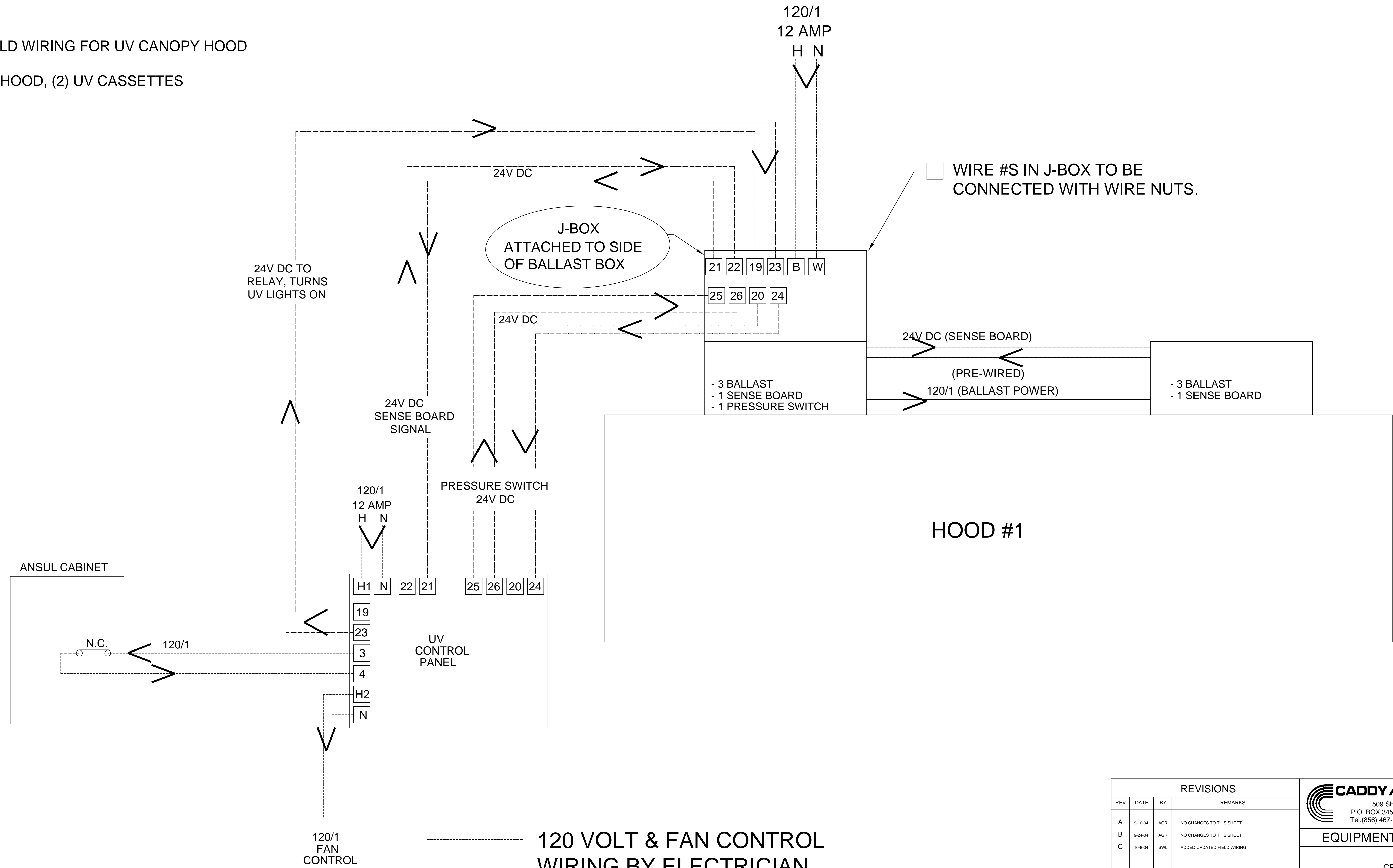
CADDY NO. 0947 ITEM NO. 1B

JOB: MIAMI VALLEY HOTEL  
 LOC:  
 CUST:  
 CUST#:

16534C

FIELD WIRING FOR UV CANOPY HOOD

(1) HOOD, (2) UV CASSETTES



WIRE #S IN J-BOX TO BE CONNECTED WITH WIRE NUTS.

----- 120 VOLT & FAN CONTROL WIRING BY ELECTRICIAN  
 - - - - - 24 VOLT WIRING BY ELECTRICIAN

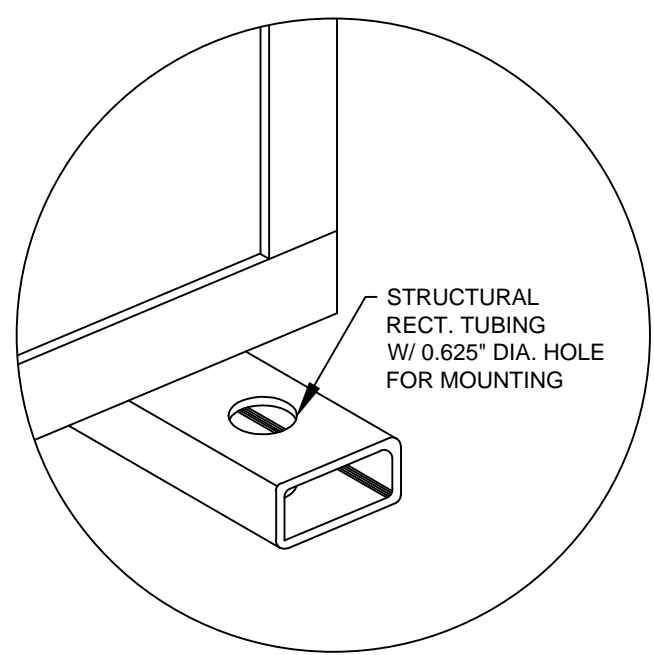
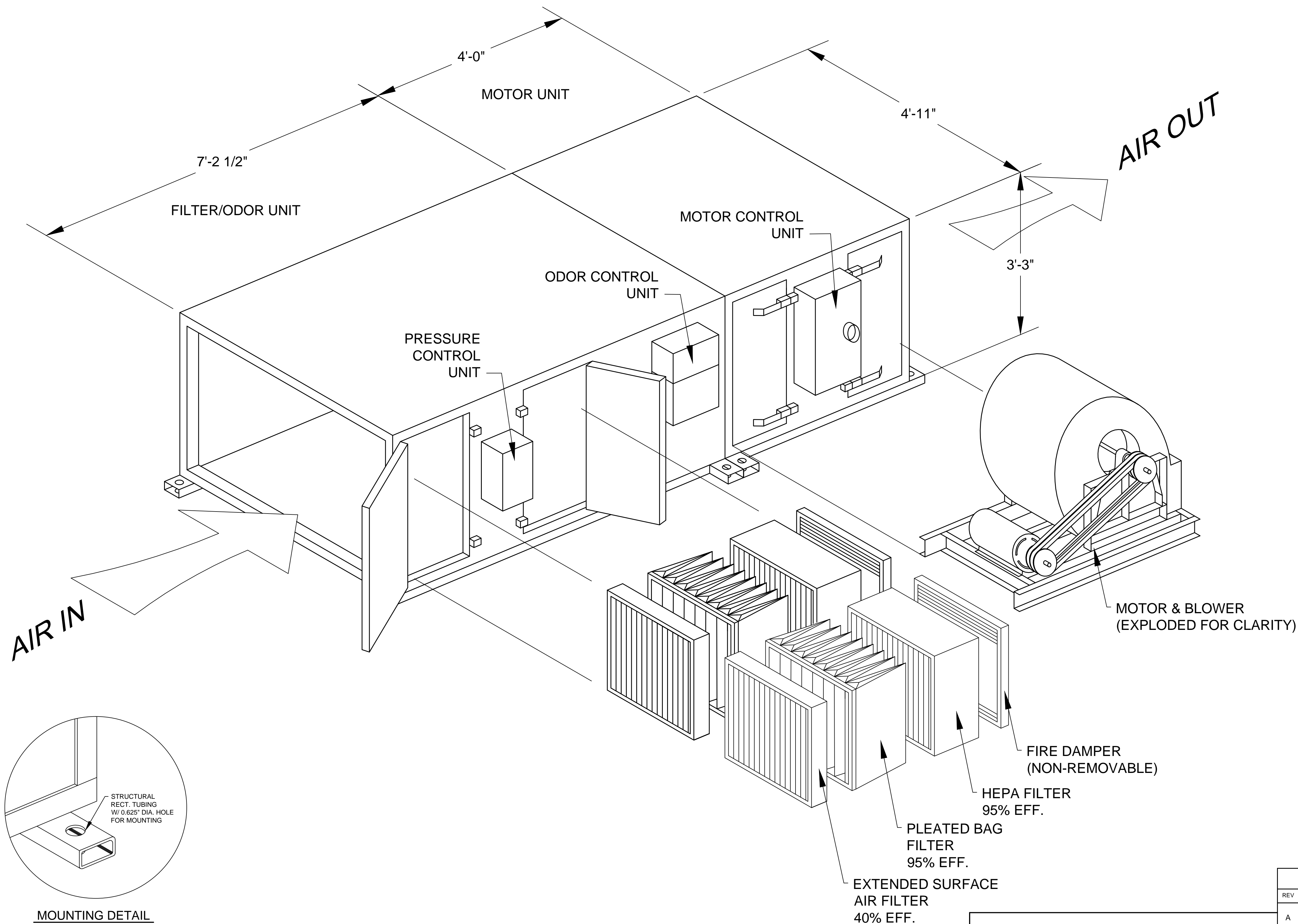
REVISIONS			
REV	DATE	BY	REMARKS
A	9-10-04	AGR	NO CHANGES TO THIS SHEET
B	9-24-04	AGR	NO CHANGES TO THIS SHEET
C	10-8-04	SWL	ADDED UPDATED FIELD WIRING

<p><b>CADDY AirSystems</b>                  509 SHARPTOWN ROAD                  P.O. BOX 345 BRIDGEPORT NJ 08014                  Tel:(856) 467-4222 Fax:(856) 467-5511</p>	
EQUIPMENT SCHEDULE	
CPE-U	
CADDY NO. 0947	ITEM NO. 1A
JOB: MIAMI VALLEY HOSPITAL	
LOC:	
CUST:	
CUST#:	

DATE	07/18/04	SCALE	AS NOTED	DWG# D-1-0947	SHT 3 OF 8
DR BY	AGR	APP'D BY			



**MOUNTING DETAIL**  
SCALE: 3/4"=1'-0"

**GENERAL CONTRACT CONDITIONS**  
ELECTRICAL WORK DONE BY CADDY CORPORATION IS EXECUTED IN COMPLIANCE WITH STANDARDS PUBLISHED BY THE UNDERWRITER'S LABORATORIES, INC. IN SO FAR AS APPLICABLE, AND THE LATEST EDITION OF THE NATIONAL ELECTRICAL CODE (NEC). CADDY CORPORATION DOES NOT ACCEPT ANY RESPONSIBILITY FOR THE REQUIREMENTS OF ANY REGIONAL AND/OR LOCAL CODES THAT ADD OR DEVIATED FROM THE ACCEPTED STANDARDS OF THE ABOVE AGENCIES. ANY FIELD WORK RELATING TO THE MODIFICATION OF ELECTRIC OR PLUMBING SYSTEMS, TO MEET REGIONAL OR LOCAL CODE REQUIREMENTS IS TO BE DONE BY OTHERS AND WITHOUT BACK CHARGES TO CADDY CORPORATION, UNLESS THESE CONDITIONS WERE PREVIOUSLY BROUGHT TO OUR ATTENTION AND ARE EXPRESSLY INCLUDED IN OUR WRITTEN QUOTATION.  
ALL WIRING AND PLUMBING AT THE JOB SITE IS THE RESPONSIBILITY OF OTHERS. EQUIPMENT WILL BE CONSTRUCTED IN ACCORDANCE WITH OUR DRAWING(S) WHICH MUST BE APPROVED PRIOR TO FABRICATION. ANY SUBSEQUENT CHANGES REQUIRED MUST BE SUBMITTED TO US IN WRITING AND ACKNOWLEDGED ON OUR STANDARD FORM.

DIMENSIONAL DATA	
LENGTH OF FILTER/ODOR UNIT	7'-2 1/2"
LENGTH OF MOTOR UNIT	4'-0"
WIDTH OF FILTER/ODOR UNIT	4'-11"
WIDTH OF MOTOR UNIT	4'-11"
HEIGHT OF FILTER/ODOR UNIT	3'-3"
HEIGHT OF MOTOR UNIT	3'-3"

"PURE-AIR" GREASE & ODOR REDUCTION SYSTEM  
3,715 CFM

REVISIONS			
REV	DATE	BY	REMARKS
A	9-10-04	AGR	NO CHANGES TO THIS SHEET
B	9-24-04	AGR	NO CHANGES TO THIS SHEET
C	10-08-04	SWL	NO CHANGES TO THIS SHEET

**CADDY AirSystems**  
509 SHARPTOWN ROAD  
P.O. BOX 345 BRIDGEPORT NJ 08014  
Tel:(856) 467-4222 Fax:(856) 467-5511

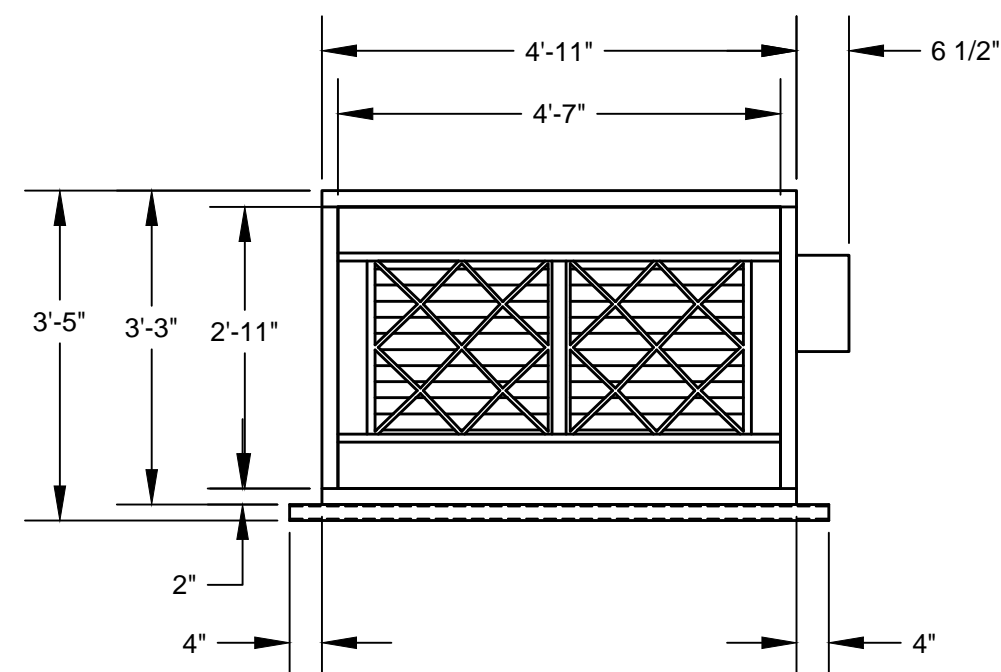
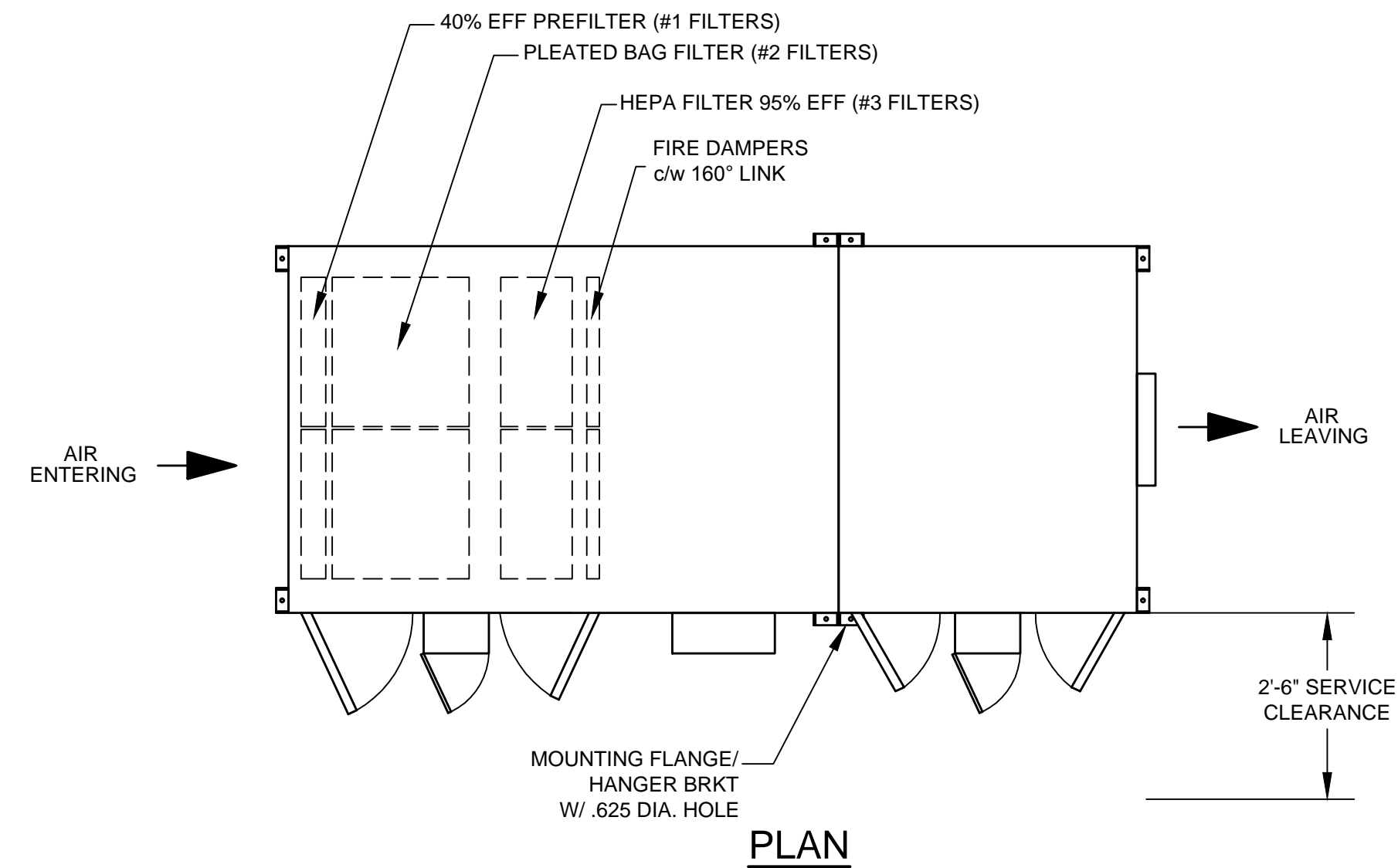
**EQUIPMENT SCHEDULE**

CAS-KEF-4000  
ISOMETRIC WITH ODOR

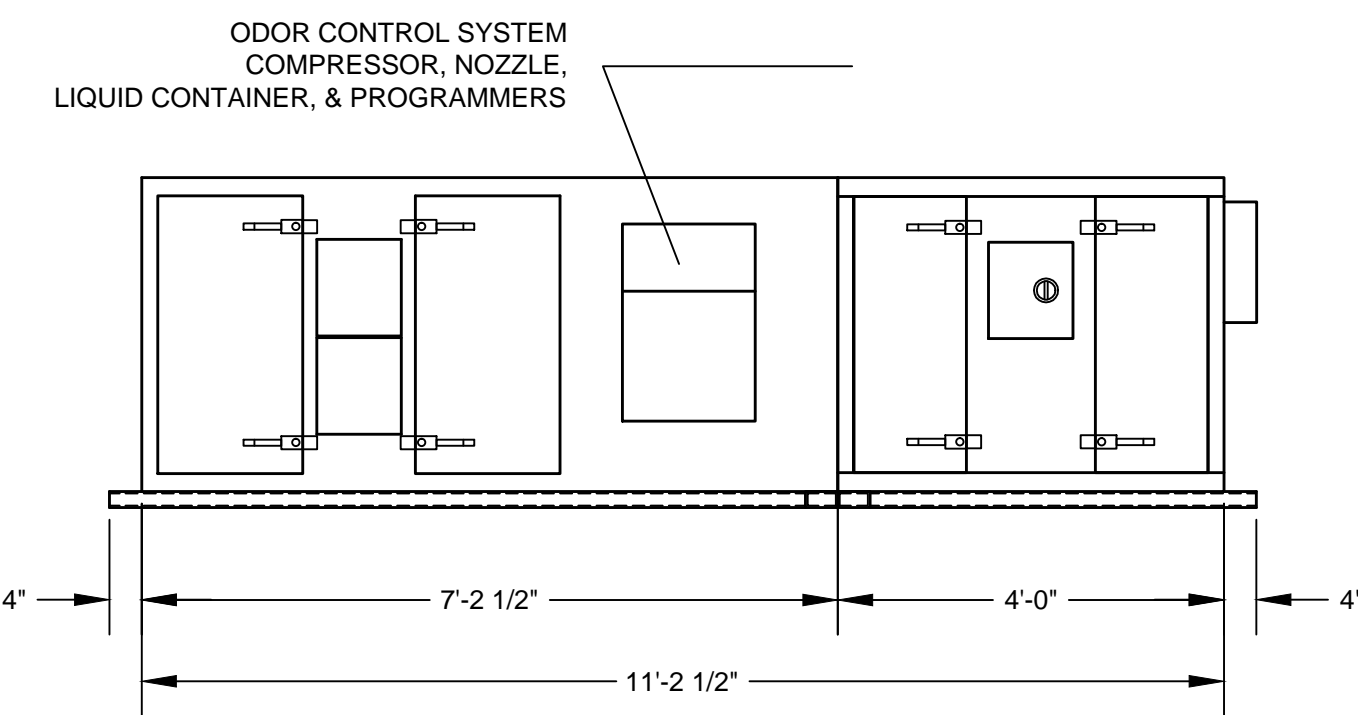
CADDY NO. 0947 ITEM NO. 2

JOB: MIAMI VALLEY HOSPITAL  
LOC:  
CUST:  
CUST#:

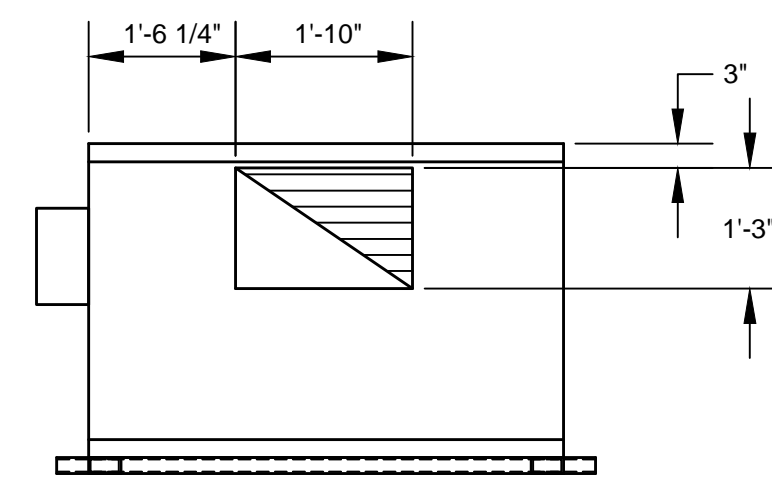
15636C



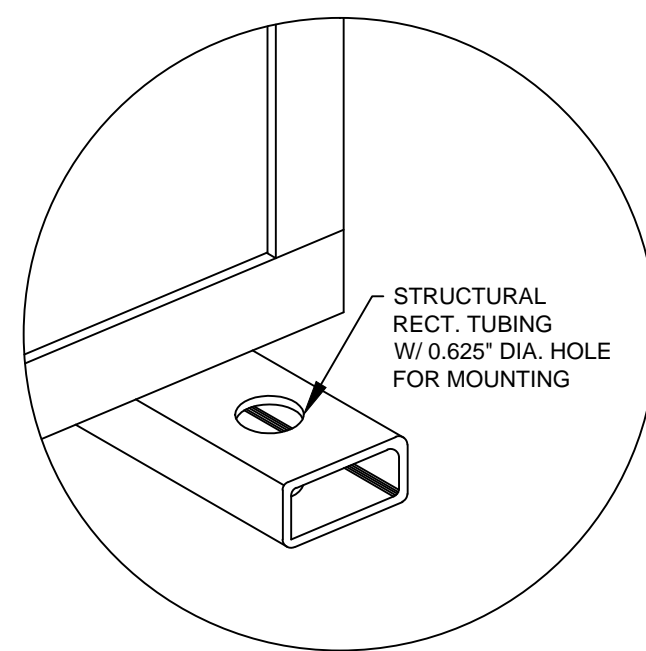
LEFT END  
(AIR ENTERING)



ELEVATION  
(RIGHT HAND ACCESS SIDE)



RIGHT END  
(AIR LEAVING)



MOUNTING DETAIL

SCALE: 3/4"=1'-0"

**GENERAL CONTRACT CONDITIONS**  
ELECTRICAL WORK DONE BY CADDY CORPORATION IS EXECUTED IN COMPLIANCE WITH STANDARDS PUBLISHED BY THE UNDERWRITERS LABORATORIES, INC. IN SO FAR AS APPLICABLE, AND THE LATEST EDITION OF THE NATIONAL ELECTRICAL CODE (NEC). CADDY CORPORATION DOES NOT ACCEPT ANY RESPONSIBILITY FOR THE REQUIREMENTS OF ANY REGIONAL AND/OR LOCAL CODES THAT ADD OR DEVIATED FROM THE ACCEPTED STANDARDS OF THE ABOVE AGENCIES. ANY FIELD WORK RELATING TO THE MODIFICATION OF ELECTRIC OR PLUMBING SYSTEMS, TO MEET REGIONAL OR LOCAL CODE REQUIREMENTS IS TO BE DONE BY OTHERS AND WITHOUT BACK CHARGES TO CADDY CORPORATION, UNLESS THESE CONDITIONS WERE PREVIOUSLY BROUGHT TO OUR ATTENTION AND ARE EXPRESSLY INCLUDED IN OUR WRITTEN QUOTATION. ALL WIRING AND PLUMBING AT THE JOB SITE IS THE RESPONSIBILITY OF OTHERS. EQUIPMENT WILL BE CONSTRUCTED IN ACCORDANCE WITH OUR DRAWING(S) WHICH MUST BE APPROVED PRIOR TO FABRICATION. ANY SUBSEQUENT CHANGES REQUIRED MUST BE SUBMITTED TO US IN WRITING AND ACKNOWLEDGED ON OUR STANDARD FORM.

FILTER DATA- AT FULL LOAD CAPACITY						GENERAL DATA		MOTOR DATA	
FILTER NO.	TYPE	SIZE	CAPACITY	QTY.	S.P.(IN W.C.)	MAXIMUM AIR EXHAUST	4,000 C.F.M.	HORSEPOWER	7.5 HP
1	40% PRE-FILTER	24" X 12" X 4"	1,000 CFM	0		DESIGN AIR EXHAUST	3,715	POWER	5.75 BHP
		24" X 24" X 4"	2,000 CFM	2		TOTAL STATIC PRESSURE	5" W.C.	FULL LOAD AMPS	11
2	PLEATED BAG FILTER	24" X 12" X 22"	1,000 CFM	0		EXTERNAL STATIC PRESSURE	3" W.C.	MOTOR RPM	1725
		24" X 24" X 22"	2,000 CFM	2		RIGHT OR LEFT SIDE PANEL ACCESS	RIGHT	VOLTAGE	480/3/60
3	95% HEPA FILTER	24" X 12" X 11.5"	1,000 CFM	0		FILTER SECTION WEIGHT	1,569 LBS.	PHASE	3
		24" X 24" X 11.5"	2,000 CFM	2		MOTOR SECTION WEIGHT	1,430 LBS.	INDOOR/OUTDOOR	INDOOR
ODOR CONTROL SECTION - 22L LIQUID MEDIA						FLOOR OR CEILING MOUNTED	CEILING		

REVISIONS			
REV	DATE	BY	REMARKS
A	9-10-04	AGR	REVISED PER PHONE CONVERSATION W/ JIM BANNER
B	9-23-04	AGR	NO CHANGES TO THIS SHEET
C	10-7-04	SWL	NO CHANGES TO THIS SHEET
DATE	07/18/04	SCALE	AS NOTED
DR BY	AGR	APP'D BY	

**CADDY AirSystems**  
509 SHARPTOWN ROAD  
P.O. BOX 345 BRIDGEPORT NJ 08014  
Tel:(856) 467-4222 Fax:(856) 467-5511

**EQUIPMENT SCHEDULE**

CAS-KEF-4000  
GENERAL LAYOUT WITH ODOR

CADDY NO. 0947 ITEM NO. 2

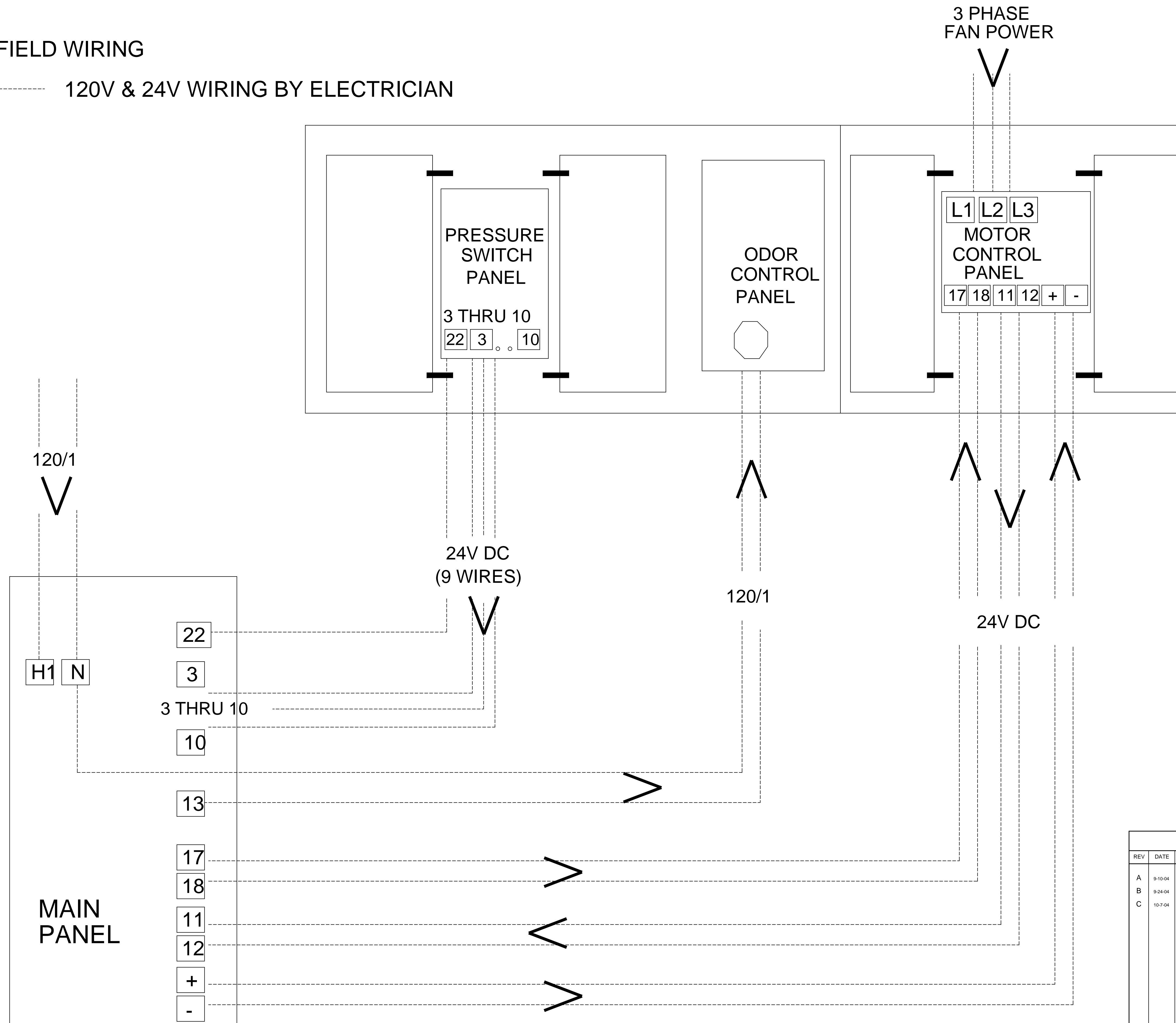
JOB: MIAMI VALLEY HOSPITAL  
LOC:  
CUST:  
CUST#:

**DWG# D-1-0947**

SHT 5  
OF 8

CAS-KEF FIELD WIRING

----- 120V & 24V WIRING BY ELECTRICIAN



REVISIONS			
REV	DATE	BY	REMARKS
A	9-10-04	AGR	NO CHANGES TO THIS SHEET
B	9-24-04	AGR	NO CHANGES TO THIS SHEET
C	10-7-04	SWL	NO CHANGES TO THIS SHEET

<p><b>CADDY AirSystems</b> 509 SHARPTOWN ROAD P.O. BOX 345 BRIDGEPORT NJ 08014 Tel:(856) 467-4222 Fax:(856) 467-5511</p>	
EQUIPMENT SCHEDULE	
CAS-KEF-4000	
CADDY NO. 0947	ITEM NO. 2
JOB: MIAMI VALLEY HOSPITAL	
LOC:	
CUST:	
CUST#:	

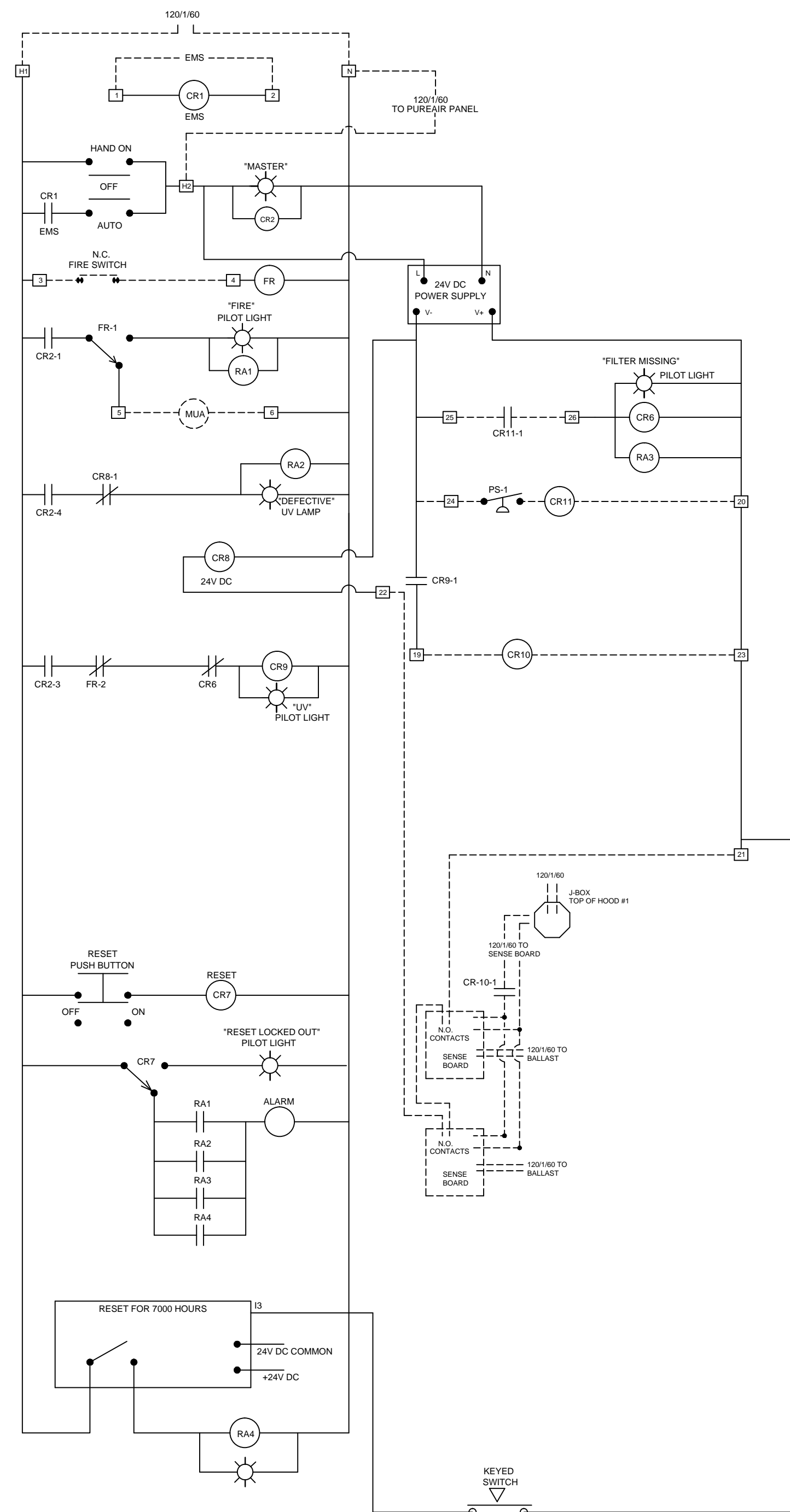
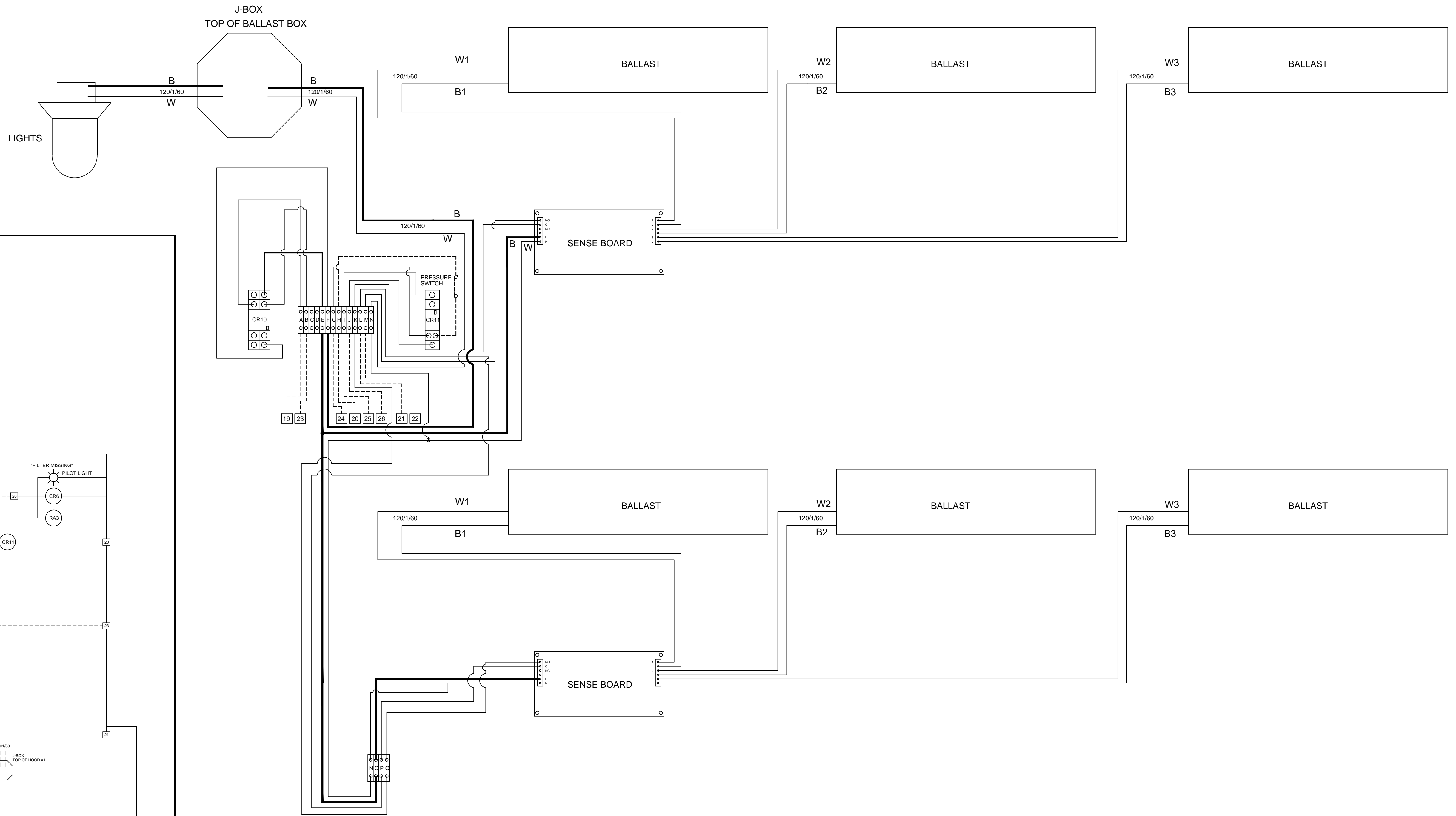
DATE	07/18/04	SCALE	AS NOTED	DWG# D-1-0947	SHT 6 OF 8
DR BY	AGR	APP'D BY			

UV CONTROL PANEL FOR 1 CANOPY HOOD (2 CASSETTES)  
TAG: UV MAIN PANEL

SEQUENCE OF OPERATIONS

- Main switch set to "Auto", "EMS" system will start system
  - Main switch set to "Hand On" system will start
  - In case of fire, Supply air, Capture-Jet air, and UV bulb power will be shut off Alarm will sound
  - If a filter is missing, alarm will sound, pilot light will energize and "UV" bulb power will be shut off.
  - If "Sense" board in ballast box senses faulty light bulb, alarm will sound and pilot light will energize
  - If timer reaches 7000 hours, alarm will sound and pilot light will energize.
- \* All alarm signals will be able to be shut off by use of push button switch  
Pilot Lights stay energized until the pushbutton is pushed again

BALLAST BOX WIRING  
(1) HOOD, (2) CASSETTES



REVISIONS			
REV	DATE	BY	REMARKS

<p><b>CADDY AirSystems</b> 509 SHARPTOWN ROAD P.O. BOX 345 BRIDGEPORT NJ 08014 Tel:(856) 467-4222 Fax:(856) 467-5511</p>	
<p><b>EQUIPMENT SCHEDULE</b></p> <p>CPE-U INTERNAL WIRING DIAGRAM BALLAST BOX WIRING DIAGRAM</p>	
CADDY NO. 0947	ITEM NO. 1A
<p>JOB: MIAMI VALLEY HOSPITAL LOC: CUST: CUST#:</p>	

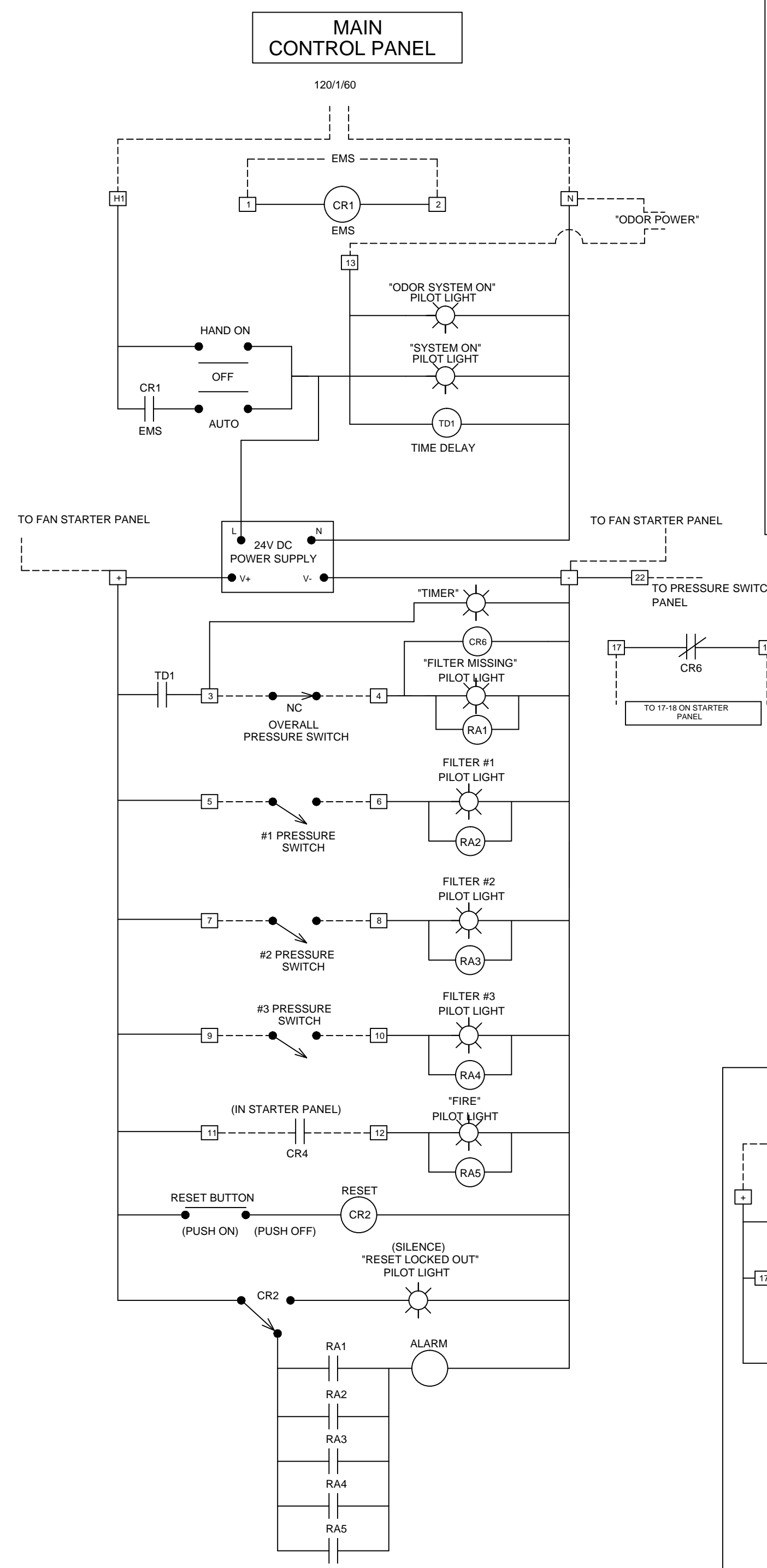
  

DATE	10-08-04	SCALE	AS NOTED
DR BY	SWL	APP'D BY	

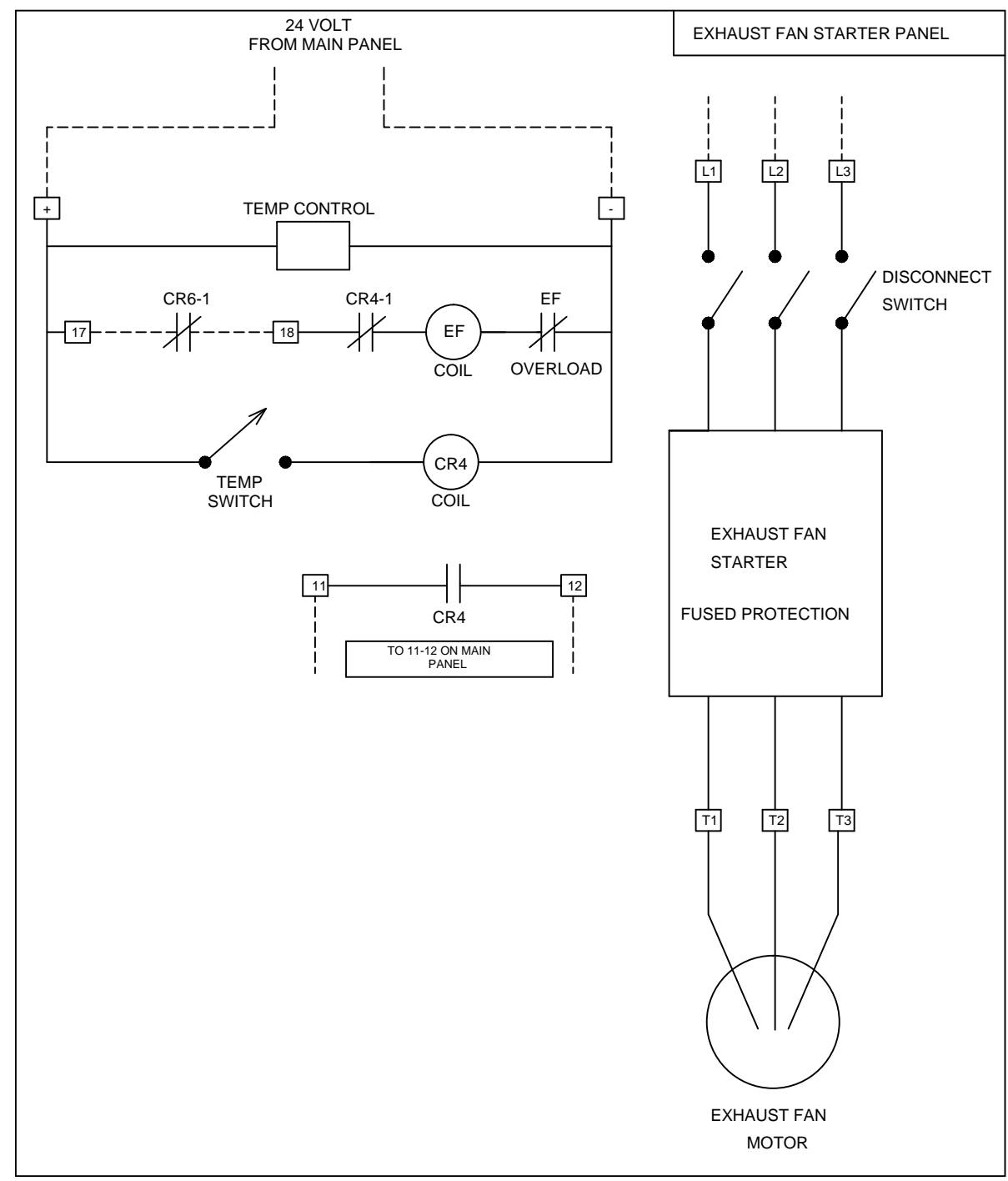
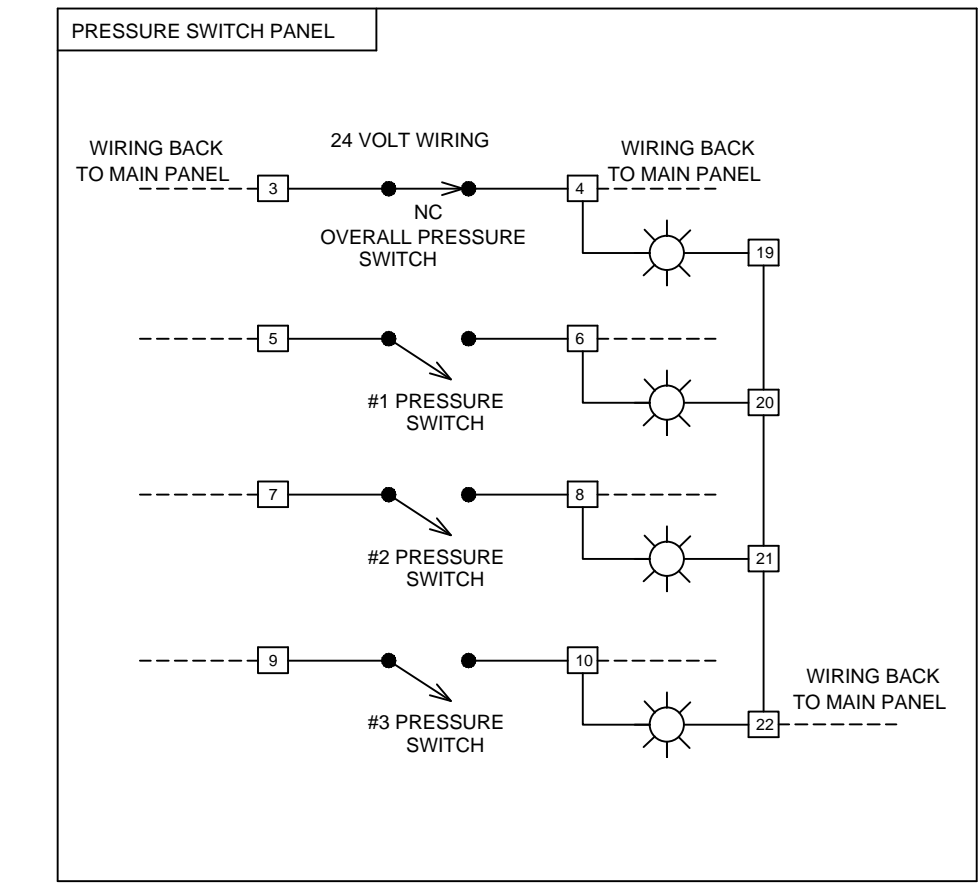
  

<b>DWG# D-2-0947</b>	SHT 7 OF 8
----------------------	---------------

CAS-KEF WIRING DIA.



- SEQUENCE OF OPERATIONS**
- Main switch set to "Auto", "EMS" system will start system
  - Main switch set to "Hand On" system will start
  - Timer will override "Overall" Pressure switch until unit is up to speed
  - If a filter is missing at start-up the unit will shut down and pilot light "Filter Missing" will energize
  - If a filter becomes clogged and needs changing, the "Filter #" pilot light will be energized showing maintenance required
  - If the temperature in the Exhaust fan housing goes above 350° the system will shut down "Excessive Heat in Unit" Pilot light will be energized
  - All warning pilot lights (Red) are tied to an audible alarm. Alarm can be silenced by pushing "Silence Alarm" button. Pilot Light tied to alarm will stay lit till the warning/error has been fixed.
  - Odor control is powered up at time of system activation.



REVISIONS			
REV	DATE	BY	REMARKS

<p><b>CADDY AirSystems</b> 509 SHARPTOWN ROAD P.O. BOX 345 BRIDGEPORT NJ 08014 Tel:(856) 467-4222 Fax:(856) 467-5511</p>	
<p><b>EQUIPMENT SCHEDULE</b></p> <p>CAS-KEF-4000 INTERNAL WIRING DIAGRAM</p>	
<p>CADDY NO. 0947</p>	<p>ITEM NO. 2</p>
<p>JOB: MIAMI VALLEY HOSPITAL LOC: CUST: CUST#:</p>	

DATE	10-08-04	SCALE	AS NOTED	SHT 8 OF 8
DR BY	SWL	APP'D BY		

DWG# D-2-0947