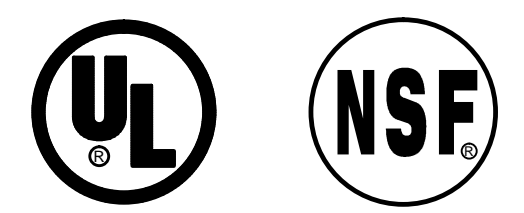


**SHOP NOTE: CONVEYOR HOUSINGS AND LEGS ARE TO BE REMOVABLE FOR SHIPPING AND INSTALLATION.**

**21-C CONVEYOR IS DESIGNED TO TRANSPORT 14" X 18" FLAT BOTTOM TRAYS. CADDY MUST BE PROVIDED WITH A SAMPLE TRAY FOR FABRICATION TO BEGIN.**

**PLEASE SHIP DISPOSER RING TO CADDY FOR WELDING TO UNDERSIDE OF SINK. PRODUCTION OF SOILED TRAY HANDLING SYSTEM CANNOT BE COMPLETED WITHOUT RING**

**GENERAL CONTRACT CONDITIONS**  
ELECTRICAL WORK DONE BY CADDY CORPORATION IS EXECUTED IN COMPLIANCE WITH STANDARDS PUBLISHED BY THE UNDERWRITERS LABORATORIES, INC. INsofar AS APPLICABLE, AND THE LATEST EDITION OF THE NATIONAL ELECTRICAL CODE (NEC). CADDY CORPORATION DOES NOT ACCEPT ANY RESPONSIBILITY FOR THE REQUIREMENTS OF ANY REGIONAL AND/OR LOCAL CODES THAT ADD OR DEVIATED FROM THE ACCEPTED STANDARDS OF THE ABOVE AGENCIES. ANY FIELD WORK RELATING TO THE MODIFICATION OF ELECTRIC OR PLUMBING SYSTEMS, TO MEET REGIONAL OR LOCAL CODE REQUIREMENTS IS TO BE DONE BY OTHERS AND WITHOUT BACK CHARGES TO CADDY CORPORATION, UNLESS THESE CONDITIONS WERE PREVIOUSLY BROUGHT TO OUR ATTENTION AND ARE EXPRESSLY INCLUDED IN OUR WRITTEN QUOTATION. ALL WIRING AND PLUMBING AT THE JOB SITE IS THE RESPONSIBILITY OF OTHERS. EQUIPMENT WILL BE CONSTRUCTED IN ACCORDANCE WITH OUR DRAWING(S) WHICH MUST BE APPROVED PRIOR TO FABRICATION. ANY SUBSEQUENT CHANGES REQUIRED MUST BE SUBMITTED TO US IN WRITING AND ACKNOWLEDGED ON OUR STANDARD FORM.



NOTES	
1. CONVEYOR IS TO BE U.L. LISTED WITH LABEL AFFIXED.	
2. 21-C CONVEYOR WILL BE SHIPPED IN (7) PIECES, INCLUDING (2) TELESCOPING WINDOW PIECES, AS INDICATED BY FIELD JOINTS IN PLAN VIEW UNLESS OTHERWISE REQUESTED.	
3. 21-C CONTROL STATION INCLUDES CONVEYOR START/STOP SWITCH AND VARIABLE SPEED CONTROL.	
4. 21-C CONVEYOR IS DESIGNED TO TRANSPORT 14" X 18" OR 15" X 20" RECTANGULAR FLAT BOTTOM TRAYS.	
5. DISPOSER TO BE MASTER MODEL #C2-L-BC WITH CRTW CONTROLS. PLEASE SHIP 8 1/4" SINK ADAPTOR TO CADDY FOR WELDING TO UNDERSIDE OF SINK. EXISTING DISPOSER HAS BOWL CONE (BC), AND WILL BE REPLACED WITH THE NEW 8 1/4" SINK ADAPTOR.	
6. PROVIDE CADDY WITH MANUFACTURERS NAME, MAKE, MODEL # AND DETAILED SHOP DRAWINGS OF TRASH BINS.	
7. ALL FIELD JOINTS SHALL BE INTEGRALLY WELDED, GROUND, AND POLISHED, BY THE INSTALLER, TO A #4 FINISH MATCHING THE TABLE TOP.	

ROUGH-IN SCHEDULE		
NOTE: STUB UP FLOOR ROUGH-INS 4" A.F.F. ROUGH-INS EXTENDING FROM WALLS TO BE 10" A.F.F.		
SYM	QTY	DESCRIPTION
A	4	1 1/2" I.P.S. WASTE
B	1	120V., 60HZ., 1PH., 1/2 HP., 15 AMPS.
C	1	1/2" I.P.S. FISHER #2905 WATER INLET

REVISIONS			
REV	DATE	BY	REMARKS
A	4-9-02	RCM	REVISED PER RETURNED PRINT RECEIVED 4-6-02
B	4-29-03	RCM	REVISED PER APPROVED DWG RECEIVED 4-22-03 REVISED PER TELECON. WITH J.R. 5-5-03
C	5-21-03	RCM	NO CHANGES TO THIS SHEET

**CADDY CORPORATION**  
509 SHARPTOWN ROAD  
P.O. BOX 345 BRIDGEPORT NJ 08014  
Tel: (856) 467-4222 Fax: (856) 467-5511

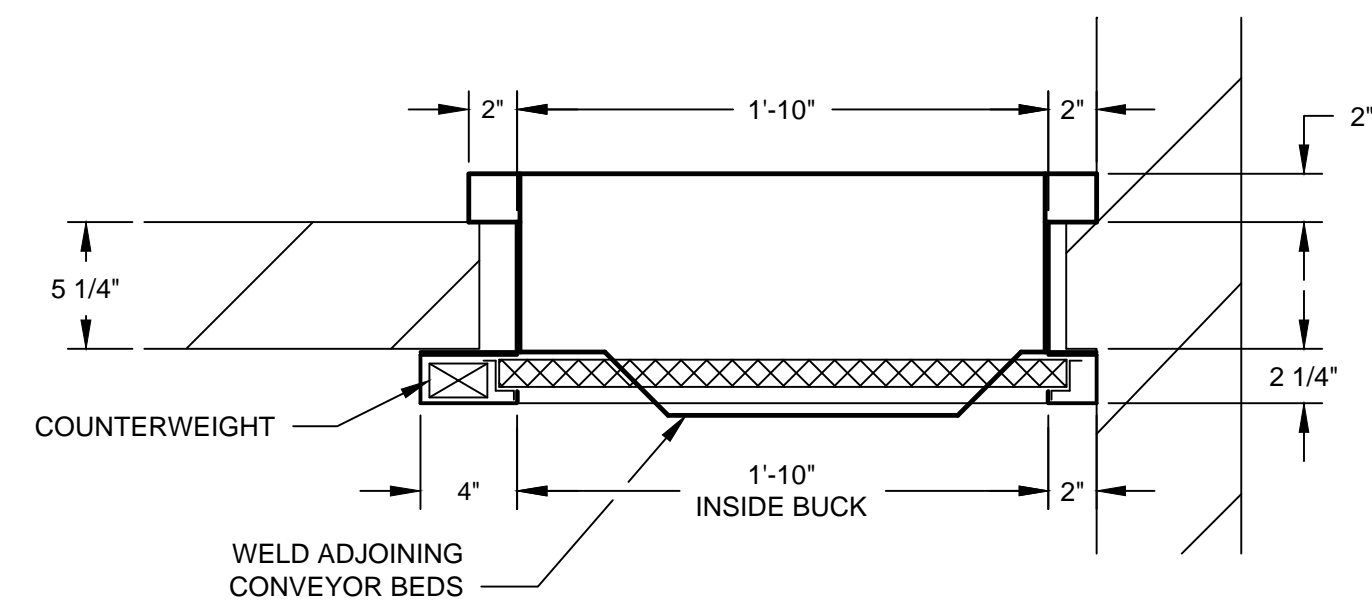
**EQUIPMENT SCHEDULE**

21-C SOILED TRAY CONVEYOR

CADDY NO. 03356 ITEM NO. 61

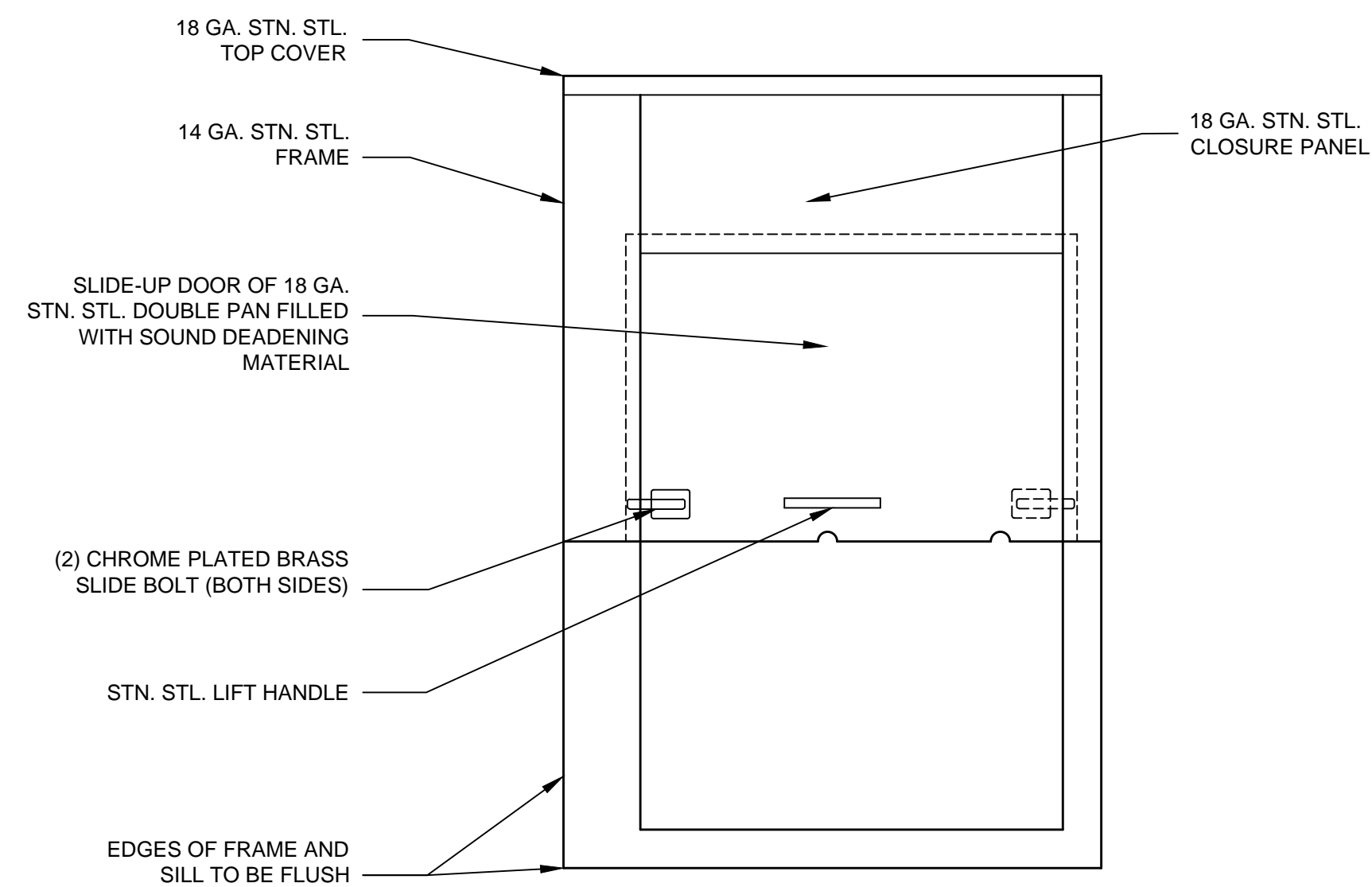
JOB: NEWMAN MEMORIAL HOSPITAL  
LOC: EMPORIA, KS.  
CUST:  
CUST#:

**DWG# D-1-03356** SHT 1 OF 2



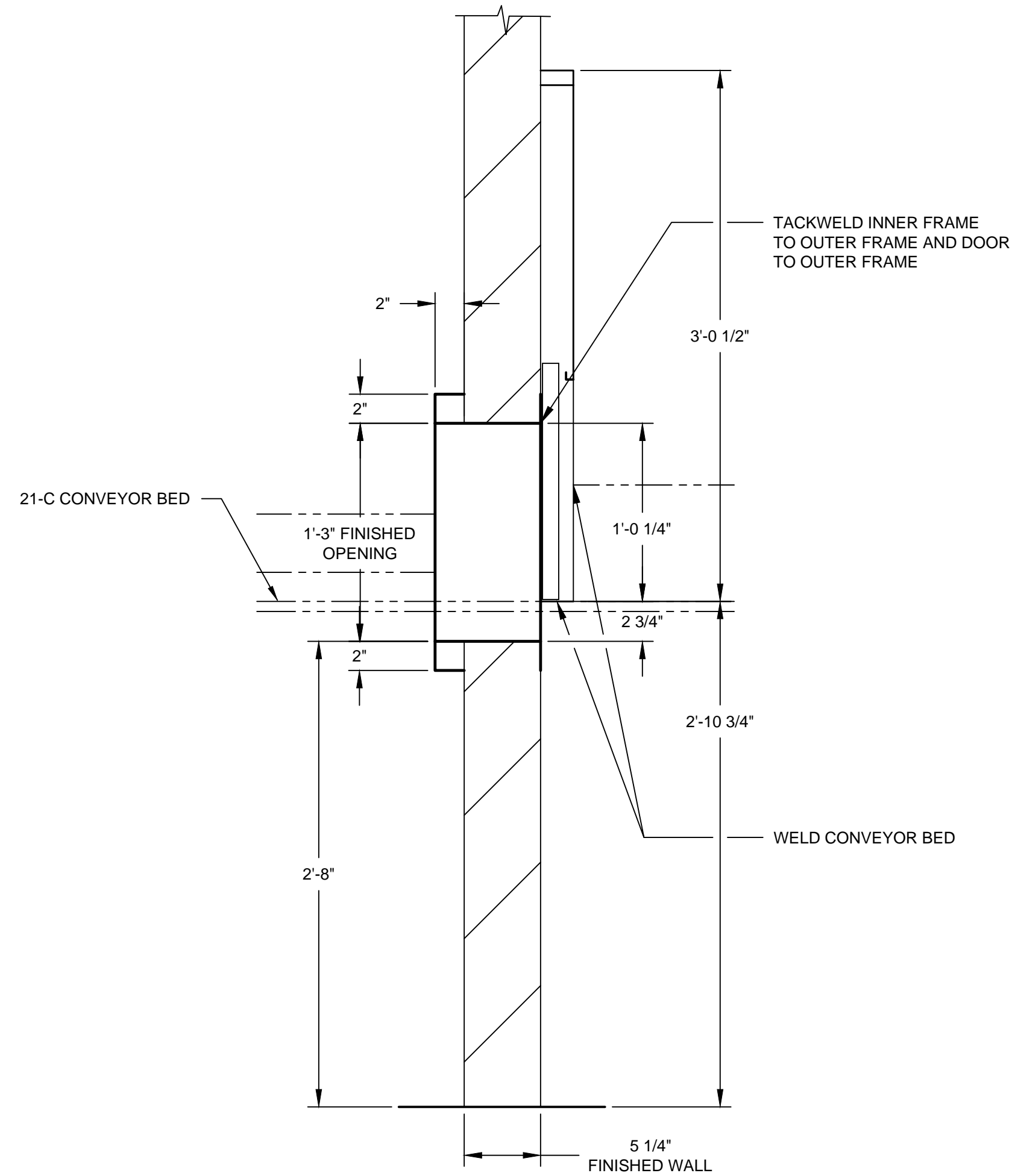
**PLAN VIEW**

1-1/2" = 1'-0"



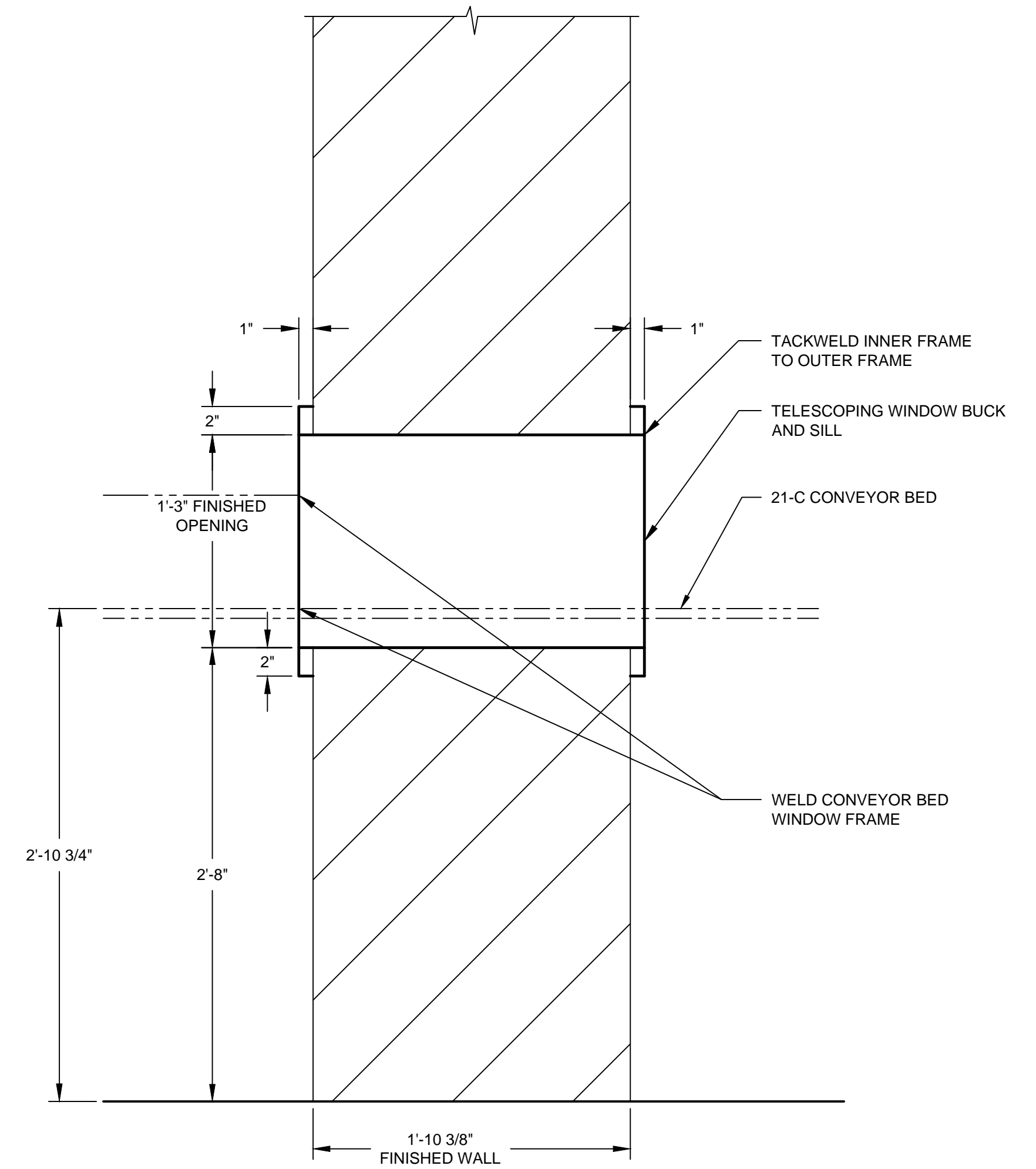
**FRONT ELEVATION**

1-1/2" = 1'-0"



**A-A SECURITY DOOR VERTICAL SECTION**

1-1/2" = 1'-0"



**PASS THROUGH WINDOW VERTICAL SECTION**

1 1/2" = 1'-0"

**NOTES**

1. ALL EXPOSED METAL TO BE STAINLESS STEEL POLISHED TO A # 4 FINISH.
2. DOOR FURNISHED WITH CONCEALED SELF LUBRICATING NOISELESS PULLEYS AND 1/8" DIAMETER STN. STL. AIRCRAFT CABLE AND SUITABLE LEAD WEIGHTS.

**GENERAL CONTRACT CONDITIONS**  
 ELECTRICAL WORK DONE BY CADDY CORPORATION OF AMERICA IS EXECUTED IN COMPLIANCE WITH STANDARDS PUBLISHED BY THE UNDERWRITERS LABORATORIES, INC. IN SO FAR AS APPLICABLE, AND THE LATEST EDITION OF THE NATIONAL ELECTRICAL CODE (NEC). CADDY CORPORATION OF AMERICA DOES NOT ACCEPT ANY RESPONSIBILITY FOR THE REQUIREMENTS OF ANY REGIONAL AND/OR LOCAL CODES THAT ADD OR DEVIATE FROM THE ACCEPTED STANDARDS OF THE ABOVE AGENCIES.  
 ANY FIELD WORK RELATING TO THE MODIFICATION OF ELECTRIC OR PLUMBING SYSTEMS TO MEET REGIONAL OR LOCAL CODE REQUIREMENTS IS TO BE DONE BY OTHERS AND WITHOUT BACK CHARGE TO CADDY CORPORATION OF AMERICA, UNLESS THESE CONDITIONS WERE PREVIOUSLY BROUGHT TO OUR ATTENTION AND ARE EXPRESSLY INCLUDED IN OUR WRITTEN QUOTATION.  
 ALL WIRING AND PLUMBING AT THE JOB SITE IS THE RESPONSIBILITY OF OTHERS. EQUIPMENT WILL BE CONSTRUCTED IN ACCORDANCE WITH OUR DRAWINGS WHICH MUST BE APPROVED PRIOR TO FABRICATION. ANY SUBSEQUENT CHANGES REQUIRED MUST BE SUBMITTED TO US IN WRITING AND ACKNOWLEDGED ON OUR STANDARD FORM.

REVISIONS			
REV	DATE	BY	REMARKS
A	4-9-02	RCM	REVISED PER RETURNED PRINT RECEIVED 4-6-02
B	4-29-03	RCM	REVISED PER APPROVED DWG RECEIVED 4-22-03 REVISED PER TELECON. WITH J.R. 5-5-03
C	5-21-03	RCM	CHANGED WALL THICKNESS IN PLAN VIEW TO 5 1/4"

DATE	01/15/02	SCALE	AS NOTED
DR BY	DRA	APP'D BY	RH

**CADDY CORPORATION**  
 509 SHARPTOWN ROAD  
 P.O. BOX 345 BRIDGEPORT NJ 08014  
 Tel:(856) 467-4222 Fax:(856) 467-5511

**EQUIPMENT SCHEDULE**

A-A SECURITY DOOR  
 WINDOW BUCK

CADDY NO. 03356 ITEM NO. 61

JOB: NEWMAN MEMORIAL HOSPITAL  
 LOC: EMPORIA, KS.

CUST:  
 CUST#:

**DWG# D-1-03356**

SHT 2  
 OF 2

13009C