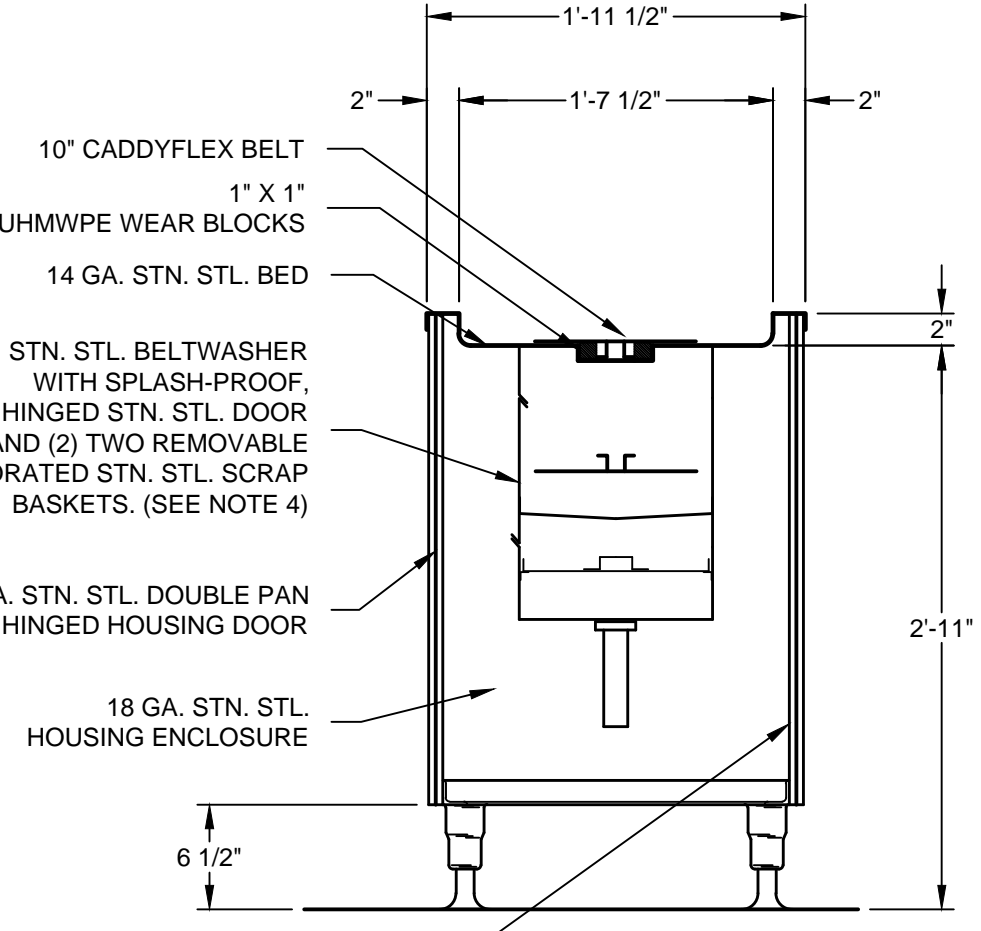
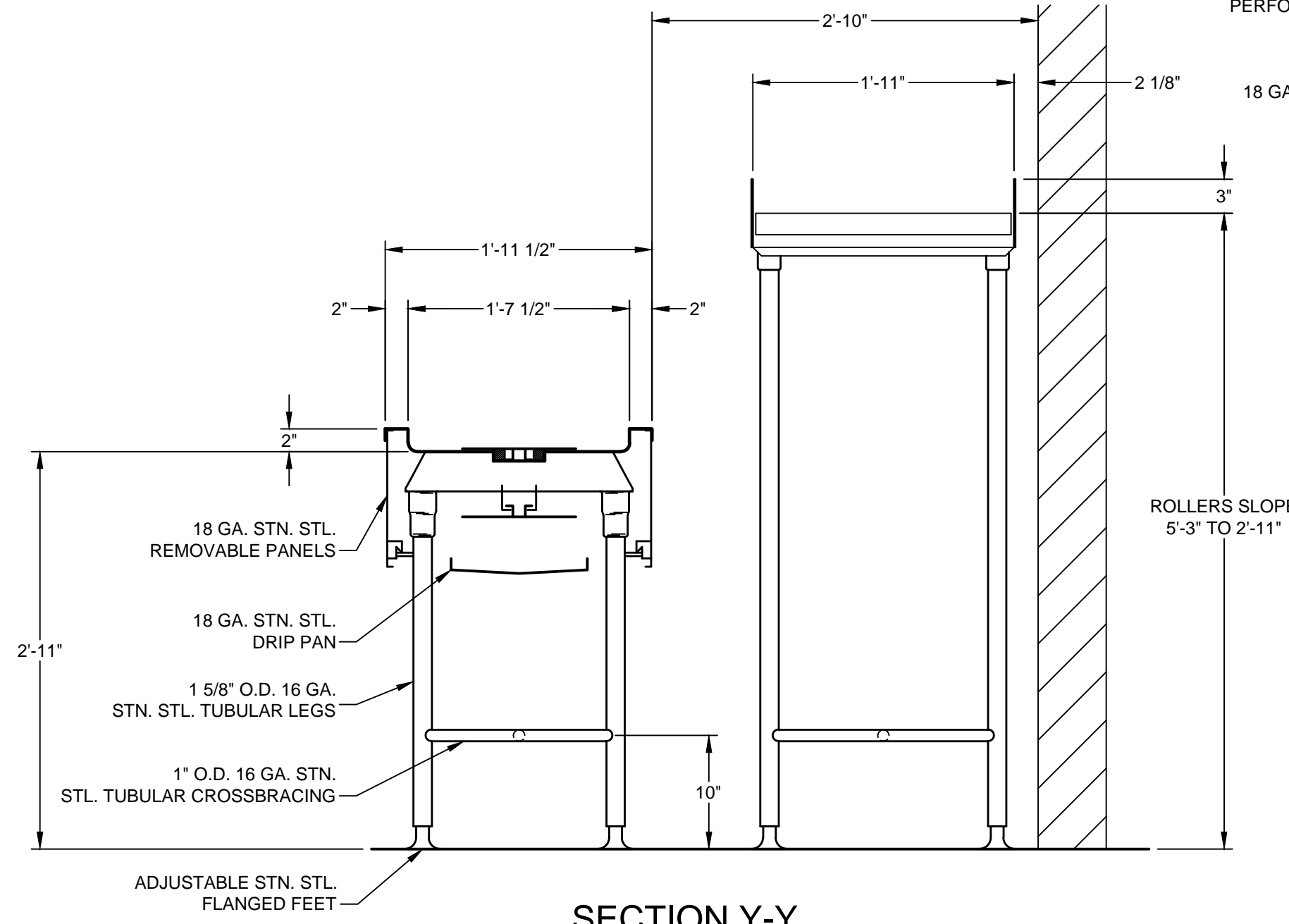


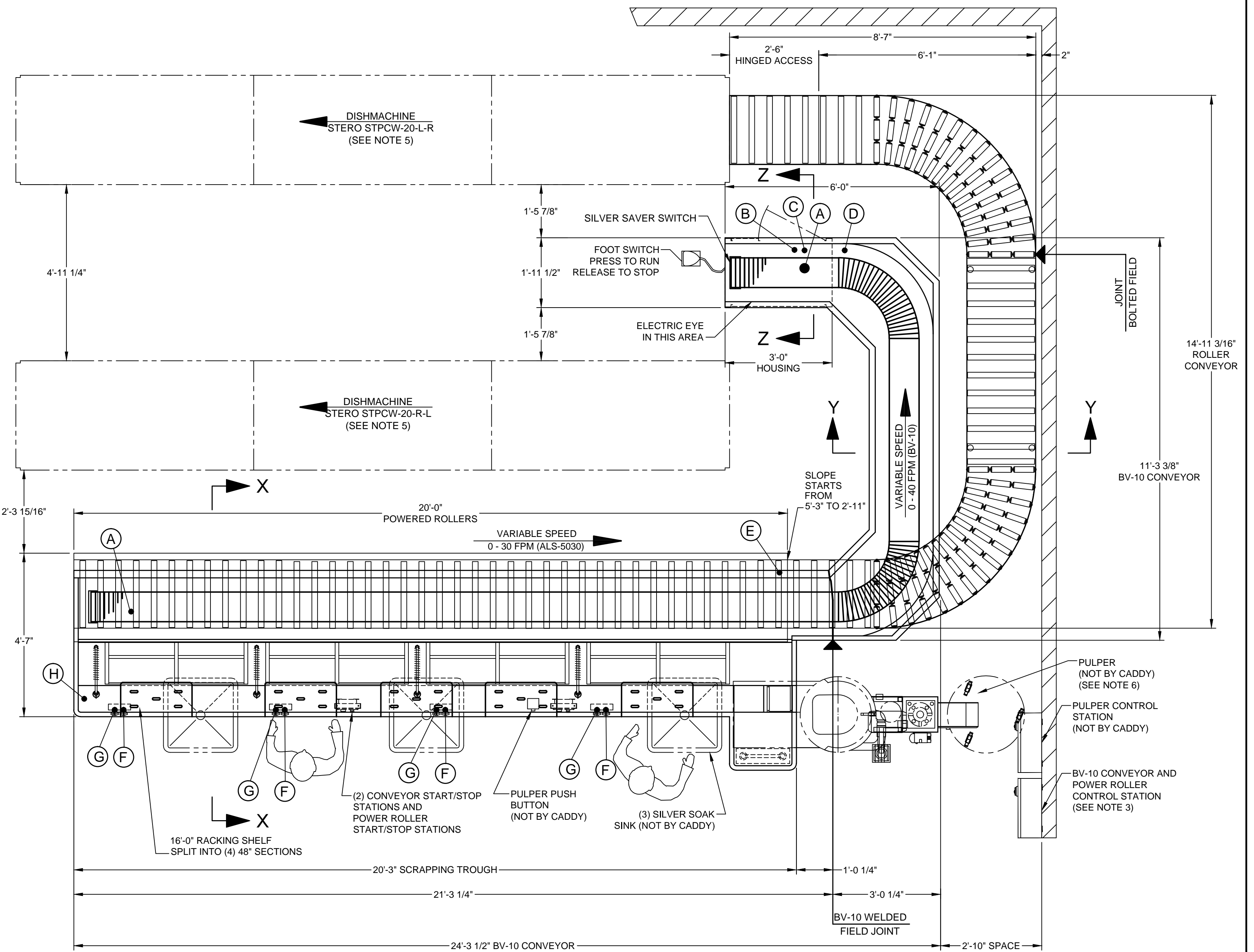
**SECTION X-X**  
1" = 1'-0"



**SECTION Z-Z**  
1" = 1'-0"



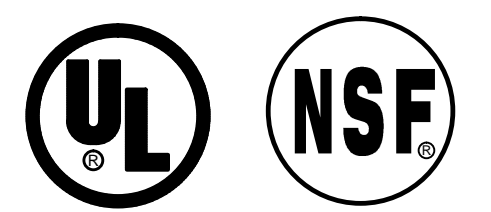
**SECTION Y-Y**  
1" = 1'-0"



**PLAN**  
1/2" = 1'-0"

**BV-10 CONVEYOR IS DESIGNED TO TRANSPORT UP TO 16" WIDE RECTANGULAR FLAT BOTTOM TRAYS. CADDY MUST BE PROVIDED WITH A SAMPLE TRAY FOR FABRICATION TO BEGIN.**

**POWERED ROLLER/ROLLER CONVEYOR IS DESIGNED TO TRANSPORT 20" X 20" RACKS**



**GENERAL CONTRACT CONDITIONS**  
ELECTRICAL WORK DONE BY CADDY CORPORATION IS EXECUTED IN COMPLIANCE WITH STANDARDS PUBLISHED BY THE UNDERWRITER'S LABORATORIES, INC. INSOFAR AS APPLICABLE, AND THE LATEST EDITION OF THE NATIONAL ELECTRICAL CODE (NEC). CADDY CORPORATION DOES NOT ACCEPT ANY RESPONSIBILITY FOR THE REQUIREMENTS OF ANY REGIONAL AND/OR LOCAL CODES THAT ADD OR DEVIATED FROM THE ACCEPTED STANDARDS OF THE ABOVE AGENCIES. ANY FIELD WORK RELATING TO THE MODIFICATION OF ELECTRIC OR PLUMBING SYSTEMS, TO MEET REGIONAL OR LOCAL CODE REQUIREMENTS IS TO BE DONE BY OTHERS AND WITHOUT BACK CHARGES TO CADDY CORPORATION, UNLESS THESE CONDITIONS WERE PREVIOUSLY BROUGHT TO OUR ATTENTION AND ARE EXPRESSLY INCLUDED IN OUR WRITTEN QUOTATION.  
ALL WIRING AND PLUMBING AT THE JOB SITE IS THE RESPONSIBILITY OF OTHERS. EQUIPMENT WILL BE CONSTRUCTED IN ACCORDANCE WITH OUR DRAWING(S) WHICH MUST BE APPROVED PRIOR TO FABRICATION. ANY SUBSEQUENT CHANGES REQUIRED MUST BE SUBMITTED TO US IN WRITING AND ACKNOWLEDGED ON OUR STANDARD FORM.

NOTES	
1.	BV-10 CONVEYOR IS DESIGNED TO CONVEY STACKED AND LOOSE DISHES AND SIMILAR ITEMS GOING THROUGH THE DISHWASHER MACHINE.
2.	CONVEYOR IS TO BE U.L. LISTED WITH LABEL AFFIXED.
3.	CONTROL STATION INCLUDES BV-10 CONVEYOR ON/OFF SWITCH, SPEED CONTROL, BELT WASHER ON/OFF SWITCH AND POWER ROLLER ON/OFF SWITCH.
4.	BELT WASHER OPERATES AUTOMATICALLY WHILE BELT IS RUNNING. BELT WASHER INCLUDES ON/OFF SWITCH.
5.	DISHMACHINES TO BE STERO STPCW-20-L-R & STERO STPCW-20-R-L.
6.	PULPER TO BE SOMAT SUPER 60
7.	POWER ROLLER CONVEYOR IS DESIGNED TO CONVEY 20" X 20" RACKS.
8.	BV-10 TO HAVE STN. STL. SPROCKETS.
9.	BV-10 TO BE SHIPPED IN 2 PIECES. ROLLER CONVEYOR TO BE SHIPPED IN 2 PIECES

ROUGH-IN SCHEDULE			
NOTE: STUB UP FLOOR ROUGH-INS 4" A.F.F. ROUGH-INS EXTENDING FROM WALLS TO BE 10" A.F.F.			
SYM	QTY	DESCRIPTION	
A	2	1 1/2" I.P.S. WASTE	
B	1	1/2" I.P.S. HOT WATER	
C	1	1/2" I.P.S. COLD WATER	
D	1	208V., 60HZ., 3PH., 15AMPS, 3/4HP. BV-10 CONVEYOR	
E	1	208V., 60HZ., 3PH., 15AMPS, 1/2HP. POWER ROLLER	
F	4	3/8" I.P.S. HOT WATER	
G	4	3/8" I.P.S. COLD WATER	
H	1	1 1/2" I.P.S. DIFFUSER (2" DIA. CUTOUT BY CADDY DIFFUSER BY OTHERS)	

REVISIONS			
REV	DATE	BY	REMARKS
A	4-25-05	BAH	CHANGED BELT WASHER BODY TO 14 GA STN. STL.
B	5-9-05	BAH	REVISED PER ORDER.
C	5-23-05	DME	REVISED PER RETURNED APPROVAL FOR FABRICATION.

**CADDY CORPORATION**  
509 SHARPTOWN ROAD  
P.O. BOX 345 BRIDGEPORT NJ 08014  
Tel: (856) 467-4222 Fax: (856) 467-5511

**EQUIPMENT SCHEDULE**

BV-10 BUSING-VEYOR  
ALS-5030 POWER ROLLER CONVEYOR

CADDY NO. 1497-1 ITEM NO. 4-97

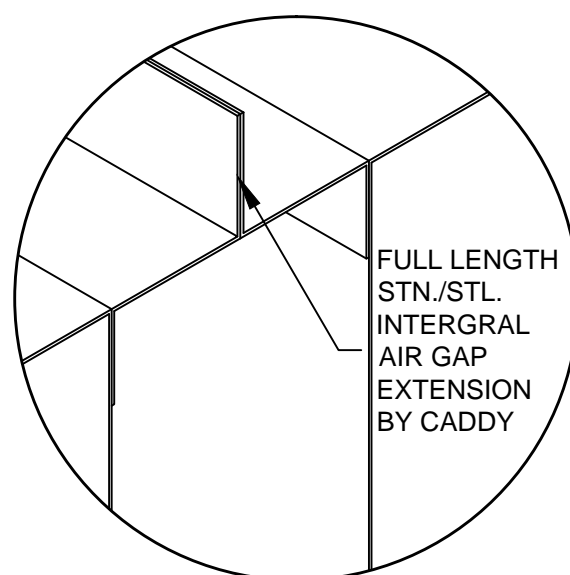
JOB: SOUTH COAST CASINO  
LOC: LAS VEGAS, NV  
CUST#:

**DWG# D-1-1497** SHT 1 OF 7

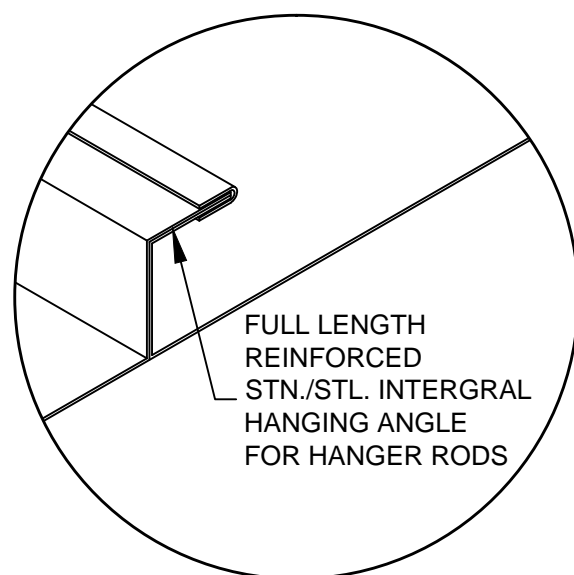
**NOTE:**  
K.E.C. MUST VERIFY THE EXACT DIMENSION OF THE COOKING EQUIPMENT FROM EITHER THE WALL OR FROM THE FRONT OF THE HOOD, SO CADDY MAY PROPERLY LOCATE THE FIRE PROTECTION NOZZLES AT TIME-OF-FABRICATION IN THE FACTORY. IF EQUIPMENT IS NOT LOCATED AS SHOWN AND THE DRAWING IS APPROVED FOR FABRICATION, THEN NOZZLES MUST BE RELOCATED AT THE EXPENSE OF OTHERS.

**CONTRACTOR NOTE:**  
ALLOW SUFFICIENT ACCESS ON TOP OF VENTILATOR TO SERVICE COMPONENTS AND UTILITIES

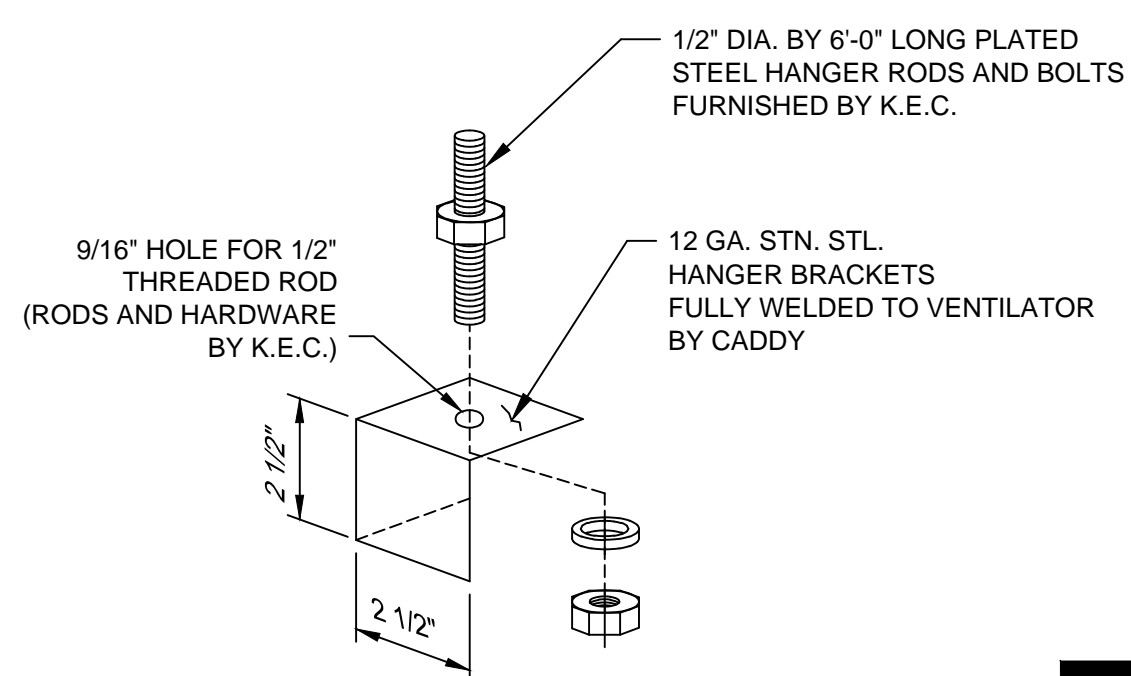
**MAKE-UP AIR NOTE:**  
AIR TEMPERATURE SHOULD RANGE FROM 60° TO 65° F, BUT MAY BE AS LOW AS 50° F DEPENDING ON AIR VOLUME, DISTRIBUTION, AND INTERNAL HEAT LOAD



**MOUNTING ANGLE DETAIL A-A**  
SCALE: 1/4"=1"



**HANGING ANGLE DETAIL B-B**  
SCALE: 1/4"=1"



**HANGER BRACKET DETAIL C-C**  
SCALE: 1/4"=1"

**GENERAL CONTRACT CONDITIONS**  
ELECTRICAL WORK DONE BY CADDY CORPORATION IS EXECUTED IN COMPLIANCE WITH STANDARDS PUBLISHED BY THE UNDERWRITERS LABORATORIES, INC. INSOFAR AS APPLICABLE, AND THE LATEST EDITION OF THE NATIONAL ELECTRICAL CODE (NEC). CADDY CORPORATION DOES NOT ACCEPT ANY RESPONSIBILITY FOR THE REQUIREMENTS OF ANY REGIONAL AND/OR LOCAL CODES THAT ADD OR DEVIATED FROM THE ACCEPTED STANDARDS OF THE ABOVE AGENCIES. ANY FIELD WORK RELATING TO THE MODIFICATION OF ELECTRIC OR PLUMBING SYSTEMS, TO MEET REGIONAL OR LOCAL CODE REQUIREMENTS IS TO BE DONE BY OTHERS AND WITHOUT BACK CHARGES TO CADDY CORPORATION, UNLESS THESE CONDITIONS WERE PREVIOUSLY BROUGHT TO OUR ATTENTION AND ARE EXPRESSLY INCLUDED IN OUR WRITTEN QUOTATION.  
ALL WIRING AND PLUMBING AT THE JOB SITE IS THE RESPONSIBILITY OF OTHERS. EQUIPMENT WILL BE CONSTRUCTED IN ACCORDANCE WITH OUR DRAWING(S) WHICH MUST BE APPROVED PRIOR TO FABRICATION. ANY SUBSEQUENT CHANGES REQUIRED MUST BE SUBMITTED TO US IN WRITING AND ACKNOWLEDGED ON OUR STANDARD FORM.

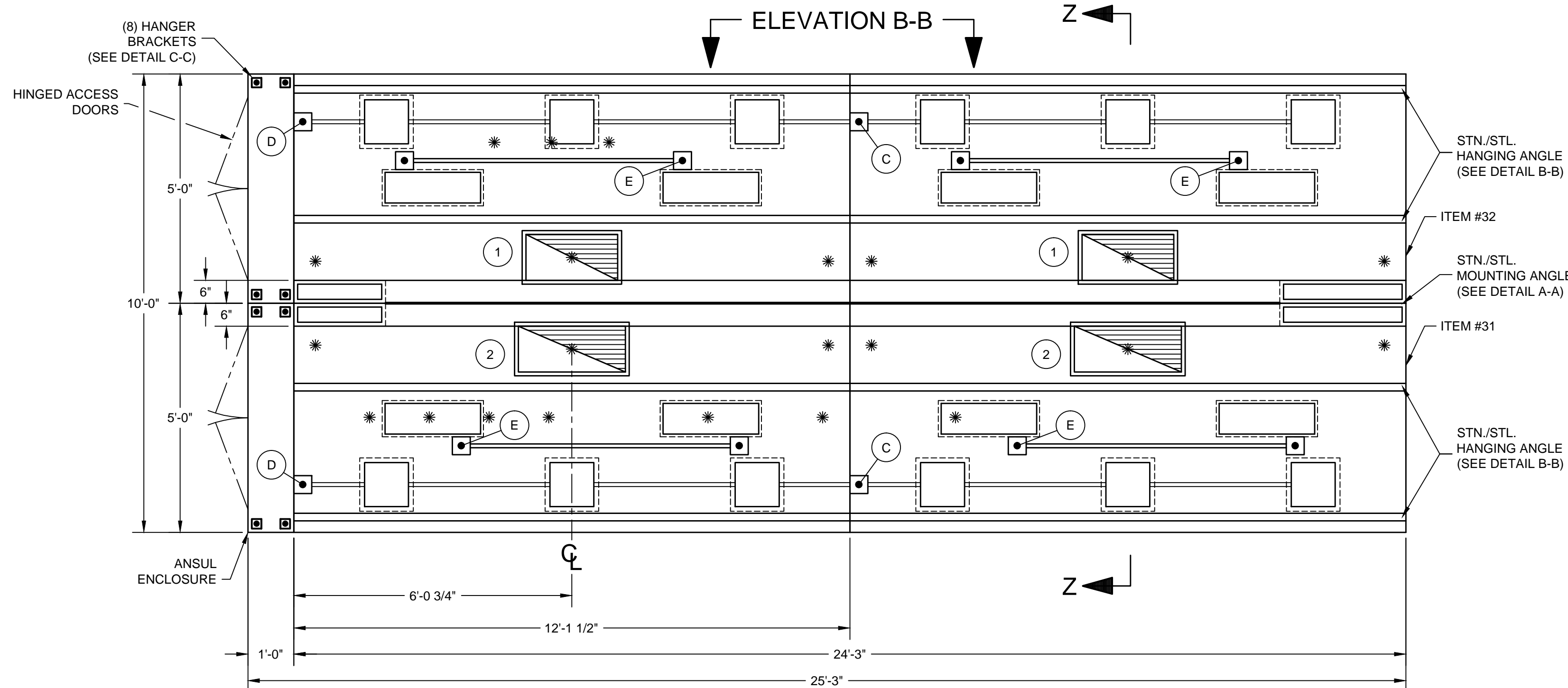
K.E.C. TO VERIFY ALL MAKES AND MODELS OF COOKING EQUIPMENT. REVIEW PLAN FOR PROPER LINE-UP PRIOR TO FABRICATION OF VENTILATORS, AND TO NOTIFY CADDY OF ANY CHANGES.

\* - MINIMUM OVERHANG FROM EDGE OF COOKING EQUIPMENT TO END OF HOOD MUST BE 6"

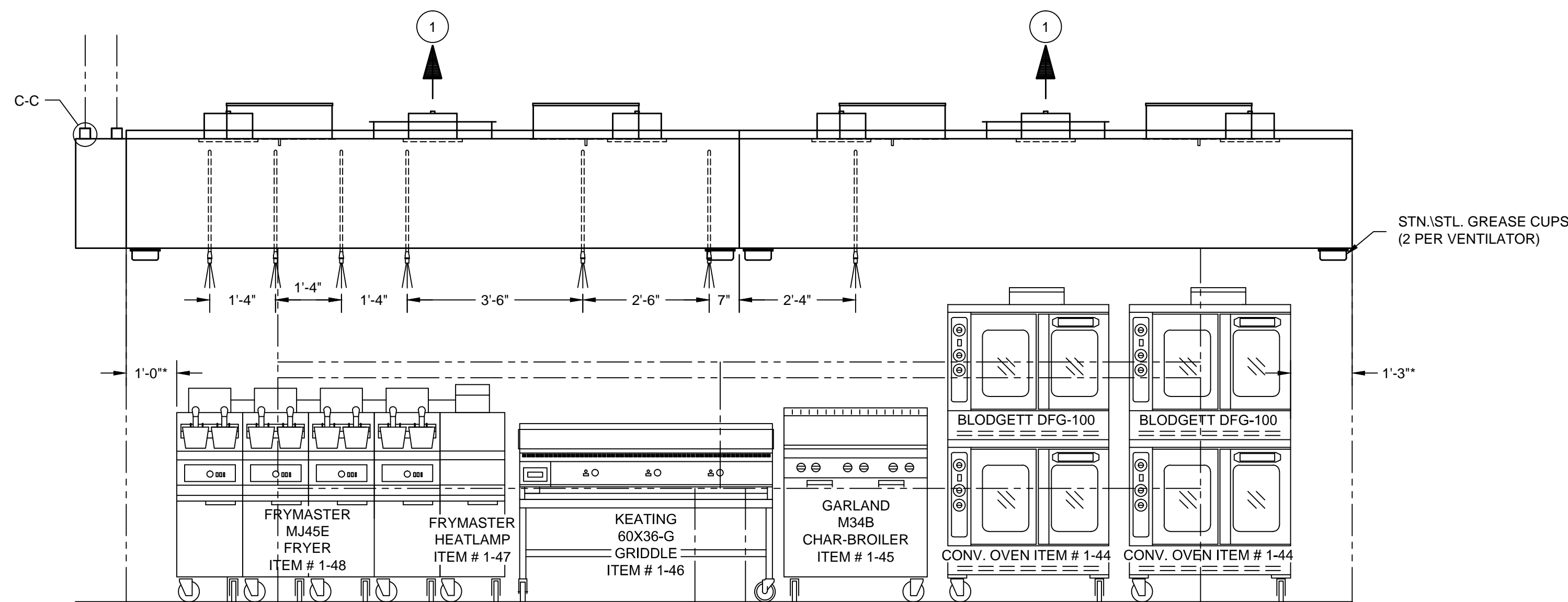
**INSTALLATION INFORMATION**

ALLOW SUFFICIENT ACCESS TO BRING VENTILATOR INTO KITCHEN AREA  
MAXIMUM VENTILATOR DIMENSIONS 13'-1 1/2" LONG x 5'-0" WIDE x 32" HIGH  
ESTIMATED TOTAL HANGING WEIGHT: 3,938 LBS.

VENTILATOR TO BE SHIPPED IN (4) UNITS.  
ALL PLUMBING AND ELECTRICAL DISCONNECTED FOR SHIPMENT. RECONNECTED IN FIELD BY PLUMBING AND ELECTRICAL CONTRACTORS.



**PLAN**  
SCALE: 1/2"=1'-0"  
**ELEVATION A-A**



**ELEVATION A-A**  
SCALE: 1/2"=1'-0"

**ELECTRICAL NOTES:**

1. LIGHT FIXTURES, VAPORPROOF, U.L. LISTED, FURNISHED, INSTALLED AND WIRED TO J-BOX (D) BY CADDY. DISCONNECTED FOR SHIPPING AT EACH J-BOX (C). RECONNECTED ON JOBSITE BY ELECTRICAL CONTRACTOR.
2. LIGHT SWITCH FOR LIGHT FIXTURE WITH 120 VOLTS A.C. SERVICE BY CADDY. SWITCH LOCATED IN UDS RISER ITEM # 36.
3. UVC LIGHT CONTROL BOX FURNISHED AND INSTALLED BY CADDY. 120V SUPPLY AND INTERLOCK WIRING TO EACH JUNCTION BOX (E) BY ELECTRICAL CONTRACTOR.

TOTAL EXHAUST : 15,764 C.F.M.

- 1 12" X 24" EXHAUST DUCTS  
3638 C.F.M. EACH @ 1.60" S.P.
- 2 12" X 28" EXHAUST DUCTS  
4244 C.F.M. EACH @ 1.60" S.P.

**THE CADDY VENTILATOR TESTING, LISTING AND APPROVAL REFERENCES:**

- NATIONAL FIRE PROTECTION ASSOCIATION  
In accordance with Recommendation of National Fire Protection Association's NFPA No. 96 "Vapor Removal from Cooking Equipment"
- NATIONAL SANITATION FOUNDATION  
Standard #2 - "Food Service Equipment"
- UNDERWRITERS LABORATORIES, INC  
Tested under standard U.L. 710 "Exhaust Hoods for Commercial Cooking Equipment". U.L. listed under file number MH12867
- UNIFORM MECHANICAL CODE  
Section 507 - Commercial Kitchen Hoods and Kitchen Ventilation Systems
- THE BOCA NATIONAL MECHANICAL CODE  
Chapter 5 - Kitchen Exhaust Equipment
- STANDARD MECHANICAL CODE (SBCC)
- Section 504 - Commercial Hoods
- UNIFORM BUILDING CODE (ICBO)



ROUGH-IN SCHEDULE	
SYM	DESCRIPTION
D	120V, 60HZ, 1PH, 0.90 K.W. CONNECTED LOAD (EACH)
E	120V, 60HZ, 1PH, 1.44 K.W. CONNECTED LOAD

REVISIONS			
REV	DATE	BY	REMARKS

**CADDY AirSystems**  
509 SHARPTOWN ROAD  
P.O. BOX 345 BRIDGEPORT NJ 08014  
Tel:(856) 467-4222 Fax:(856) 467-5511

**EQUIPMENT SCHEDULE**

SH-BCU-60

CADDY NO. 1497 ITEM NO. 31,32

JOB: SOUTH COAST CASINO  
LOC: LAS VEGAS  
CUST:  
CUST#:

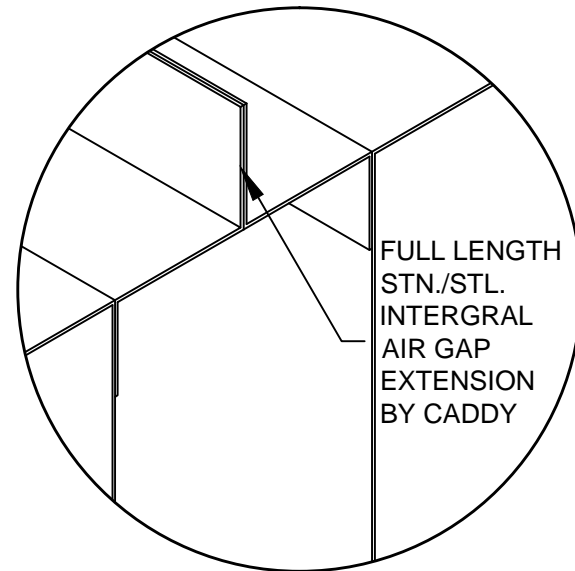
**DWG# DQ-1-1497**

SHT 2 OF 7

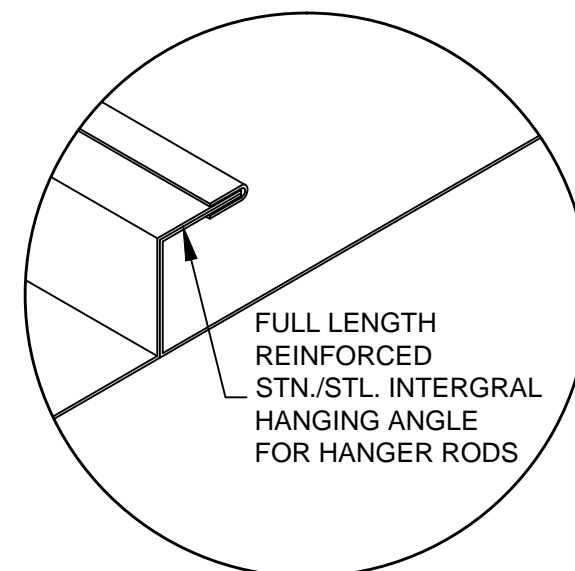
NOTE:  
K.E.C. MUST VERIFY THE EXACT DIMENSION OF THE COOKING EQUIPMENT FROM EITHER THE WALL OR FROM THE FRONT OF THE HOOD, SO CADDY MAY PROPERLY LOCATE THE FIRE PROTECTION NOZZLES AT TIME-OF-FABRICATION IN THE FACTORY. IF EQUIPMENT IS NOT LOCATED AS SHOWN AND THE DRAWING IS APPROVED FOR FABRICATION, THEN NOZZLES MUST BE RELOCATED AT THE EXPENSE OF OTHERS.

CONTRACTOR NOTE:  
ALLOW SUFFICIENT ACCESS ON TOP OF VENTILATOR TO SERVICE COMPONENTS AND UTILITIES

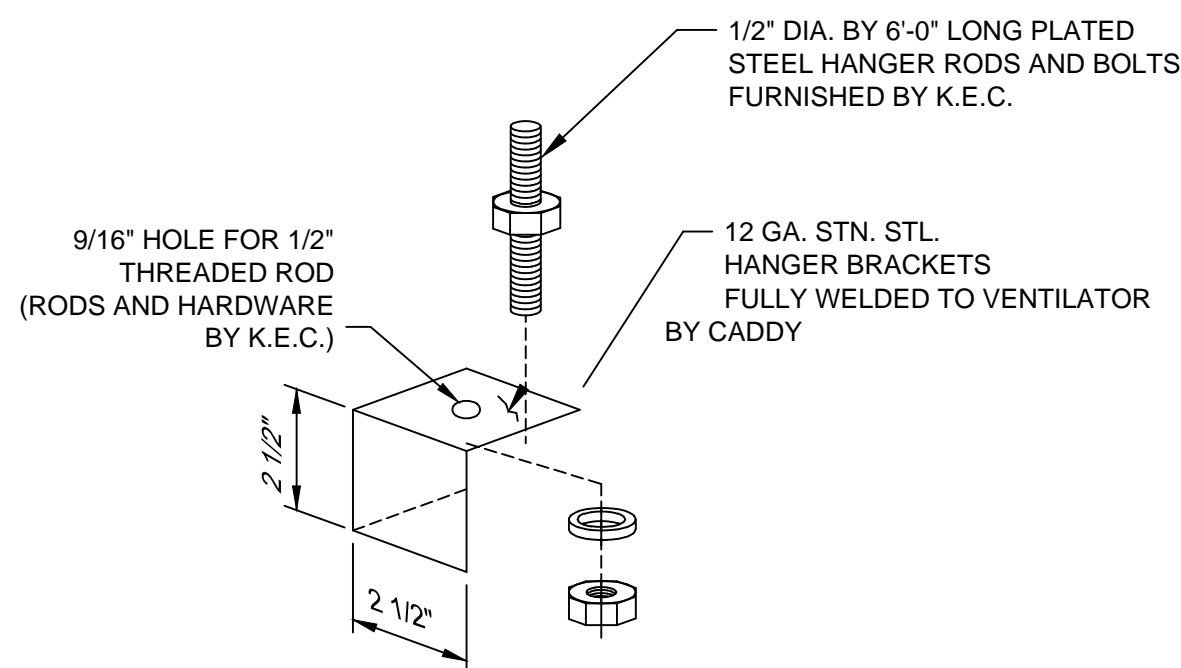
MAKE-UP AIR NOTE:  
AIR TEMPERATURE SHOULD RANGE FROM 60° TO 65° F, BUT MAY BE AS LOW AS 50° F DEPENDING ON AIR VOLUME, DISTRIBUTION, AND INTERNAL HEAT LOAD



**MOUNTING ANGLE DETAIL A-A**  
SCALE: 1/4" = 1"



**HANGING ANGLE DETAIL B-B**  
SCALE: 1/4" = 1"



**HANGER BRACKET DETAIL C-C**  
SCALE: 1/4" = 1"

**GENERAL CONTRACT CONDITIONS**  
ELECTRICAL WORK DONE BY CADDY CORPORATION IS EXECUTED IN COMPLIANCE WITH STANDARDS PUBLISHED BY THE UNDERWRITERS LABORATORIES, INC. INSOFAR AS APPLICABLE, AND THE LATEST EDITION OF THE NATIONAL ELECTRICAL CODE (NEC). CADDY CORPORATION DOES NOT ACCEPT ANY RESPONSIBILITY FOR THE REQUIREMENTS OF ANY REGIONAL AND/OR LOCAL CODES THAT ADD OR DEVIATED FROM THE ACCEPTED STANDARDS OF THE ABOVE AGENCIES. ANY FIELD WORK RELATING TO THE MODIFICATION OF ELECTRIC OR PLUMBING SYSTEMS, TO MEET REGIONAL OR LOCAL CODE REQUIREMENTS IS TO BE DONE BY OTHERS AND WITHOUT BACK CHARGES TO CADDY CORPORATION, UNLESS THESE CONDITIONS WERE PREVIOUSLY BROUGHT TO OUR ATTENTION AND ARE EXPRESSLY INCLUDED IN OUR WRITTEN QUOTATION.  
ALL WIRING AND PLUMBING AT THE JOB SITE IS THE RESPONSIBILITY OF OTHERS. EQUIPMENT WILL BE CONSTRUCTED IN ACCORDANCE WITH OUR DRAWING(S) WHICH MUST BE APPROVED PRIOR TO FABRICATION. ANY SUBSEQUENT CHANGES REQUIRED MUST BE SUBMITTED TO US IN WRITING AND ACKNOWLEDGED ON OUR STANDARD FORM.

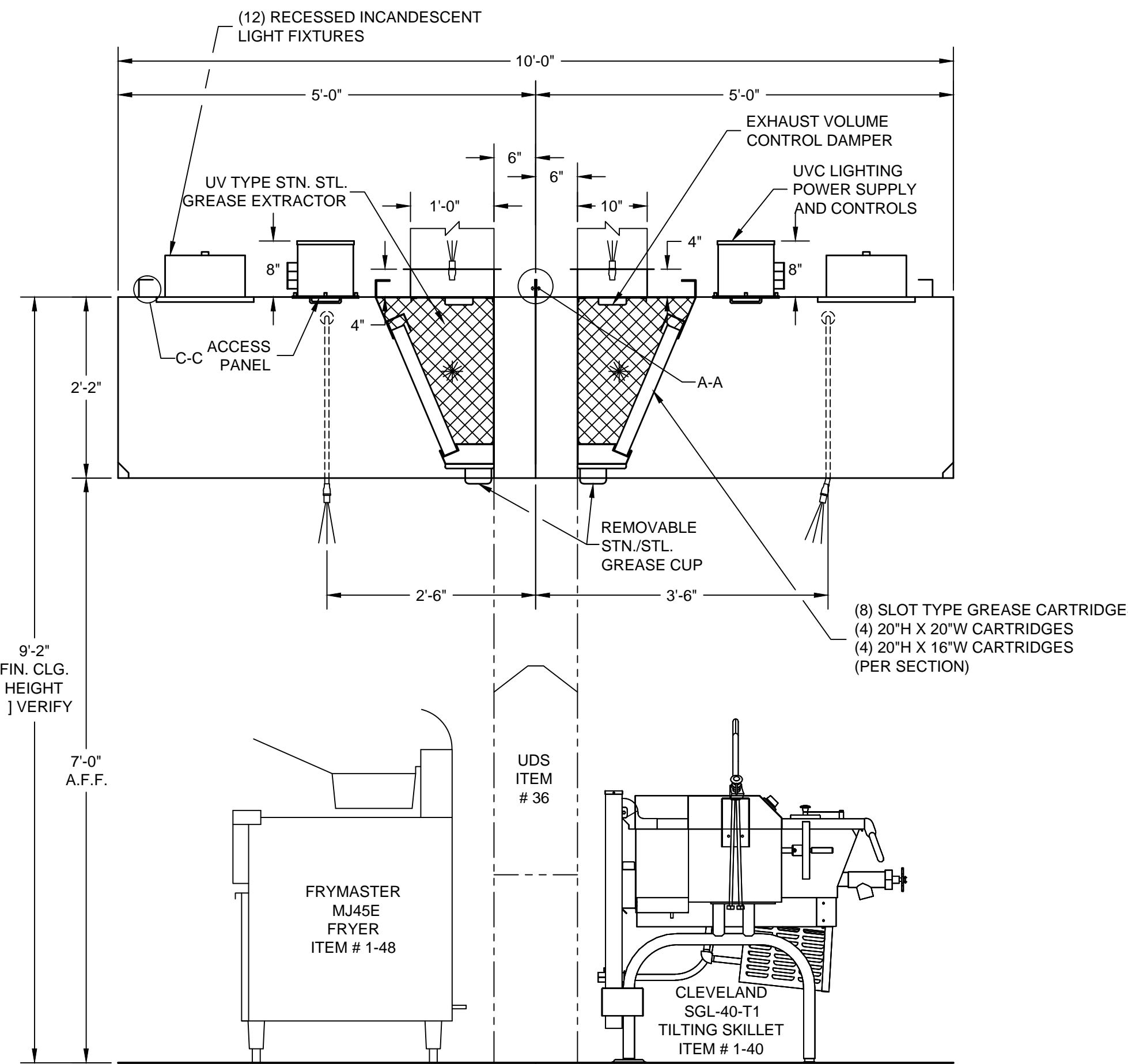
K.E.C. TO VERIFY ALL MAKES AND MODELS OF COOKING EQUIPMENT. REVIEW PLAN FOR PROPER LINE-UP PRIOR TO FABRICATION OF VENTILATORS, AND TO NOTIFY CADDY OF ANY CHANGES.

\* - MINIMUM OVERHANG FROM EDGE OF COOKING EQUIPMENT TO END OF HOOD MUST BE 6"

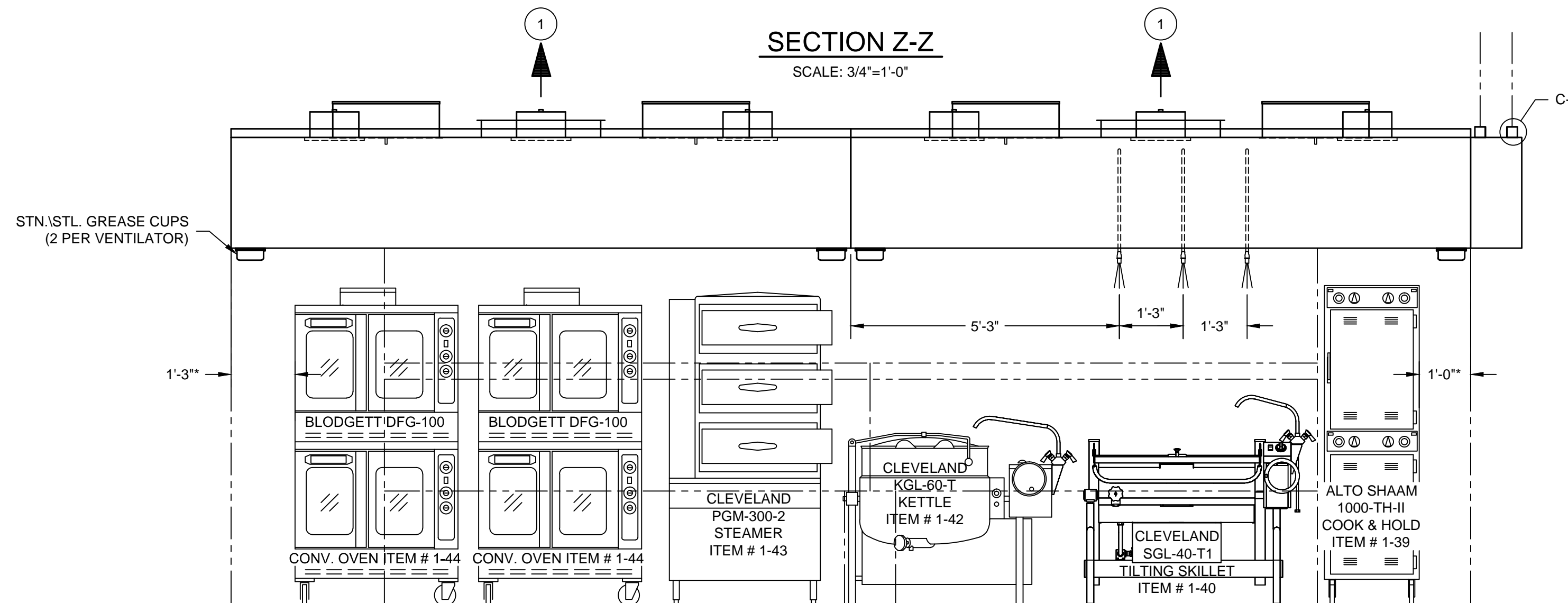
**INSTALLATION INFORMATION**

ALLOW SUFFICIENT ACCESS TO BRING VENTILATOR INTO KITCHEN AREA. MAXIMUM VENTILATOR DIMENSIONS 13'-1 1/2" LONG x 5'-0" WIDE x 32" HIGH. ESTIMATED TOTAL HANGING WEIGHT: 3,938 LBS.

VENTILATOR TO BE SHIPPED IN (4) UNITS. ALL PLUMBING AND ELECTRICAL DISCONNECTED FOR SHIPMENT. RECONNECTED IN FIELD BY PLUMBING AND ELECTRICAL CONTRACTORS.



**SECTION Z-Z**  
SCALE: 3/4" = 1'-0"



**ELEVATION B-B**  
SCALE: 1/2" = 1'-0"

**GENERAL NOTES**

- EXHAUST AIR REQUIREMENTS:**  
1. EXHAUST C.F.M. BASED ON VARIOUS C.F.M. PER LINEAR FOOT.  
2. EXHAUST STATIC PRESSURE IS 1.60" W.G. AT DUCT TAKE-OFF COLLAR. TOTAL DUCT STATIC MUST BE ADDED. STATIC BASED ON OPERATION AT MEAN SEA LEVEL.  
3. DUCT SIZE BASED ON 1800 F.P.M..
- EXHAUST FAN REQUIREMENTS:**  
1. TYPE - INDUCED DRAFT, SQUIRREL CAGE, BACKWARD INCLINED BLADES, EXHAUST FAN DISCHARGE SHOULD BE VERTICAL, AWAY FROM AIR INTAKES. FAN FURNISHED BY OTHERS.  
2. EXHAUST FAN MUST BE FURNISHED WITH A MAGNETIC STARTER WITH 120 VOLT HOLDING COIL. STARTER FURNISHED BY OTHERS.
- MAKE-UP AIR REQUIREMENTS:**  
1. AIR EXHAUSTED FROM KITCHEN MUST BE REPLACED - WITH DISTRIBUTION CONTROLLED TO PROVIDE FOR TOTAL KITCHEN VENTILATION AND TO ESTABLISH NECESSARY AIR PATTERNS FOR PROPER PERFORMANCE OF THE VENTILATORS. AIR DISTRIBUTION SYSTEMS SHALL BE IN ACCORDANCE WITH ALL GOVERNING CODES.  
1. MAKE-UP AIR MUST BE TEMPERED - HEATED OR COOLED - CONSISTENT WITH THE STYLE OF HOOD, HEAT LOAD, CLIMATIC CONDITIONS AND APPLICABLE CODES.
- INSTALLATION:**  
1. VENTILATORS TO BE INSTALLED IN ACCORDANCE WITH ALL CODES.  
CONTRACTORS MUST REVIEW APPLICABLE CODES WITH CODE AUTHORITIES BEFORE APPROVING DRAWINGS FOR FABRICATION. SPECIAL ATTENTION MUST BE GIVEN TO CODE REGULATIONS RELATIVE TO CLEARANCES FROM SURROUNDING COMBUSTIBLE CONSTRUCTION (WALL, CEILING, ETC.).  
1. ALL DUCTWORK BEYOND VENTILATOR DUCT TAKE-OFF COLLAR TO BE PROVIDED AND INSTALLED BY OTHERS, IN ACCORDANCE WITH JURISDICTIONAL CODES. DUCTS MUST BE MECHANICALLY STRONG, GREASE AND WATER TIGHT.  
2. MOUNTING RODS FURNISHED AND INSTALLED BY OTHERS.
- CONSTRUCTION:**  
1. VENTILATORS TO BE MANUFACTURED IN STRICT ACCORDANCE WITH CADDY SPECIFICATIONS.  
2. VENTILATORS CONSTRUCTED OF 18 GA. STAINLESS STEEL.
- FIRE PROTECTION:**  
1. SURFACE FIRE PROTECTION PROVIDED AND INSTALLED BY CADDY. (ANSUL R-102).  
2. CAUTION: SURFACE FIRE PROTECTION SYSTEM INSTALLATION MUST BE COORDINATED WITH CADDY TO PREVENT SYSTEMS INTERFERENCE WITH VENTILATOR'S OPERATION/PERFORMANCE. IMPROPER INSTALLATION MAY VOID U.L. LISTINGS OF THE EQUIPMENT.  
3. IMPORTANT NOTE: NFPA 96 REQUIRES THAT ALL GAS AND ELECTRIC COOKING EQUIPMENT THAT IS PROTECTED BY A SURFACE FIRE PROTECTION SYSTEM MUST AUTOMATICALLY SHUT OFF UPON ACTIVATION OF THE SYSTEM.
- ELECTRICAL REQUIREMENTS:**  
1. LIGHT FIXTURE BULBS PROVIDED AND INSTALLED BY OTHERS.



ROUGH-IN SCHEDULE		DATE	SCALE
SYM	QTY	DESCRIPTION	
D	2	120V, 60HZ, 1PH, 0.90 K.W. CONNECTED LOAD (EACH)	AS NOTED
E	4	120V, 60HZ, 1PH, 1.44 K.W. CONNECTED LOAD	

REVISIONS			
REV	DATE	BY	REMARKS

**CADDY AirSystems**  
509 SHARPTOWN ROAD  
P.O. BOX 345 BRIDGEPORT NJ 08014  
Tel:(856) 467-4222 Fax:(856) 467-5511

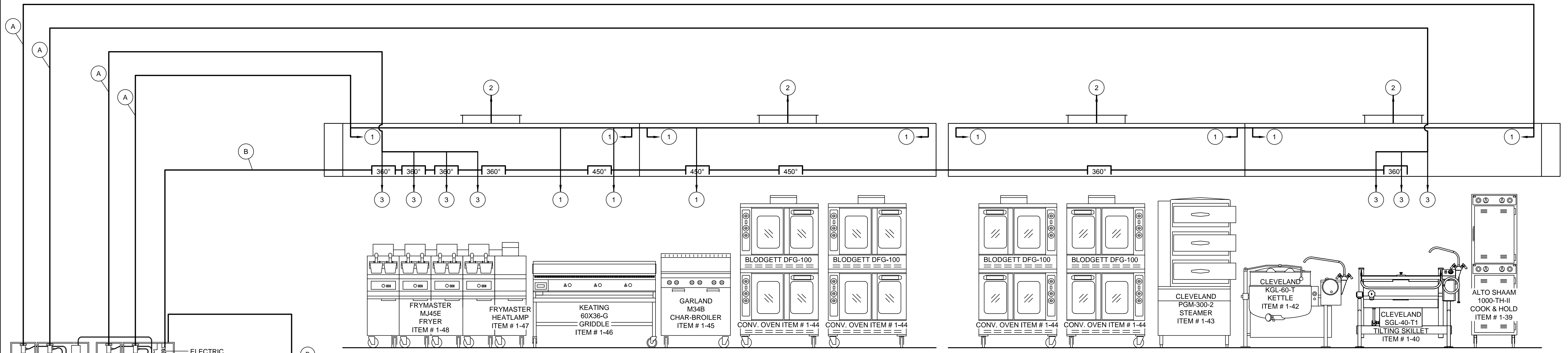
**EQUIPMENT SCHEDULE**

SH-BCU-60

CADDY NO. 1497 ITEM NO. 31,32

JOB: SOUTH COAST CASINO  
LOC: LAS VEGAS  
CUST:  
CUST#:

**DWG# DQ-1-1497** SHT 3 OF 7



**ELEVATION A-A**  
SCALE: 1/2"=1'-0"

**ELEVATION B-B**  
SCALE: 1/2"=1'-0"

**ANSUL ROUGH-IN**

SYM	DESCRIPTION
A	3/8" SCH 40 BLACK IRON PIPE
B	1/2" EMT CONDUIT
C	MICRO SWITCH FOR ELECTRIC SHUT-DOWN AND/OR ALARM BY CADDY WIRING BY OTHERS.
D	120V/1/60 SOLENOID TYPE GAS VALVE PROVIDED AND INSTALLED BY CADDY (LOCATED IN UDS RISER ITEM #36).

**ANSUL NOZZLE DATA**

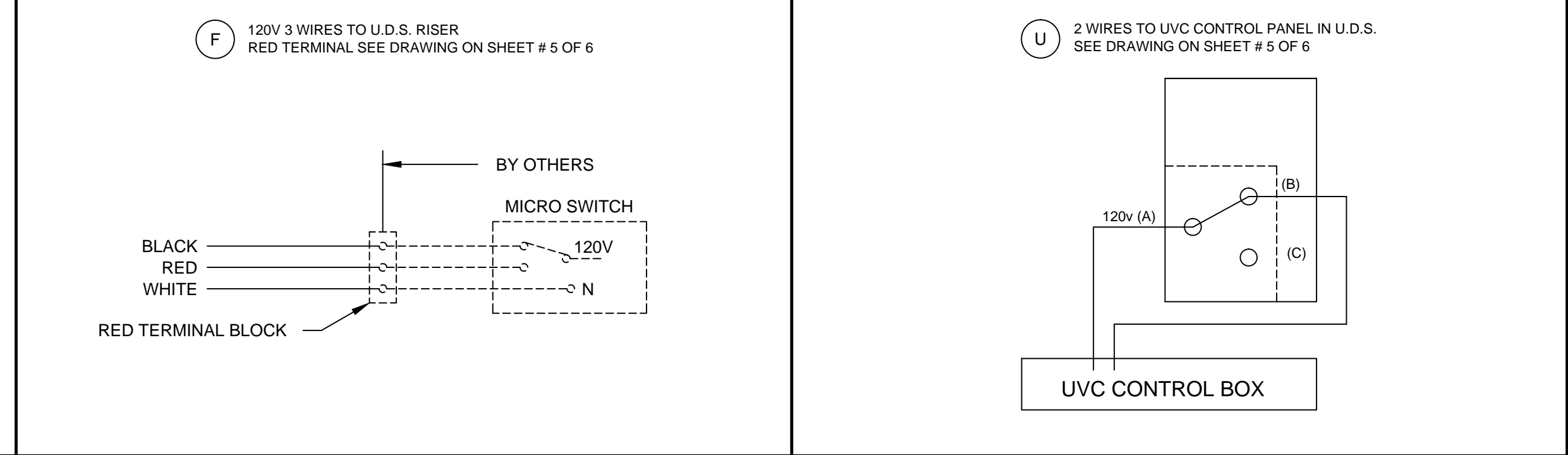
SYM	QTY	DESCRIPTION	FLOW POINTS (EACH)	MIN.- MAX. HEIGHT ABOVE HAZARD
1	11	ANSUL #1N	1	15"-40" (CHAR-BROILER) 35"-40" (GRIDDLE)
2	4	ANSUL #2W	2	
3	7	ANSUL #3N	3	21"-34"

**ANSUL R-102 3/3/3/3 SYSTEM**

FOR VENTILATOR ITEM # 31/32

**WET CHEMICAL FIRE PROTECTION SYSTEM INTERLOCK**

**OPERATION**  
WHEN DETECTION LINES OR HAND "PULL" STATION ENERGIZE THE FIRE PROTECTION SYSTEM, THE MICRO-SWITCH REPOSITIONS TO:  
1. INTERRUPT SERVICE TO THE GAS SOLENOID VALVES AND ACTIVATE SHUNT TRIP CIRCUIT BREAKER LOCATED IN U.D.S., SHUTTING OFF FUEL AND POWER TO THE EQUIPMENT.

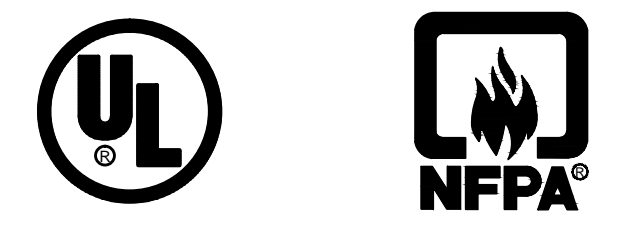


**INSTALLATION INFORMATION**

ALLOW SUFFICIENT AREA TO MOUNT ANSUL ON CLOSEST STRUCTURAL WALL TO VENTILATOR  
MAXIMUM ANSUL ENCLOSURE DIMENSIONS  
42" LONG x 7 1/2" DEEP x 23 1/2" HIGH  
ESTIMATED TOTAL HANGING WEIGHT: 150 LBS.  
ENCLOSURE MOUNTING HEIGHT 7'-0"

**GENERAL CONTRACT CONDITIONS**

ELECTRICAL WORK DONE BY CADDY CORPORATION IS EXECUTED IN COMPLIANCE WITH STANDARDS PUBLISHED BY THE UNDERWRITERS LABORATORIES, INC. INSOFAR AS APPLICABLE, AND THE LATEST EDITION OF THE NATIONAL ELECTRICAL CODE (NEC). CADDY CORPORATION DOES NOT ACCEPT ANY RESPONSIBILITY FOR THE REQUIREMENTS OF ANY REGIONAL AND/OR LOCAL CODES THAT ADD OR DEVIATED FROM THE ACCEPTED STANDARDS OF THE ABOVE AGENCIES. ANY FIELD WORK RELATING TO THE MODIFICATION OF ELECTRIC OR PLUMBING SYSTEMS, TO MEET REGIONAL OR LOCAL CODE REQUIREMENTS IS TO BE DONE BY OTHERS AND WITHOUT BACK CHARGES TO CADDY CORPORATION, UNLESS THESE CONDITIONS WERE PREVIOUSLY BROUGHT TO OUR ATTENTION AND ARE EXPRESSLY INCLUDED IN OUR WRITTEN QUOTATION.  
ALL WIRING AND PLUMBING AT THE JOB SITE IS THE RESPONSIBILITY OF OTHERS. EQUIPMENT WILL BE CONSTRUCTED IN ACCORDANCE WITH OUR DRAWING(S) WHICH MUST BE APPROVED PRIOR TO FABRICATION. ANY SUBSEQUENT CHANGES REQUIRED MUST BE SUBMITTED TO US IN WRITING AND ACKNOWLEDGED ON OUR STANDARD FORM.



**REVISIONS**

REV	DATE	BY	REMARKS

**CADDY AirSystems**  
509 SHARPTOWN ROAD  
P.O. BOX 345 BRIDGEPORT NJ 08014  
Tel:(856) 467-4222 Fax:(856) 467-5511

**EQUIPMENT SCHEDULE**

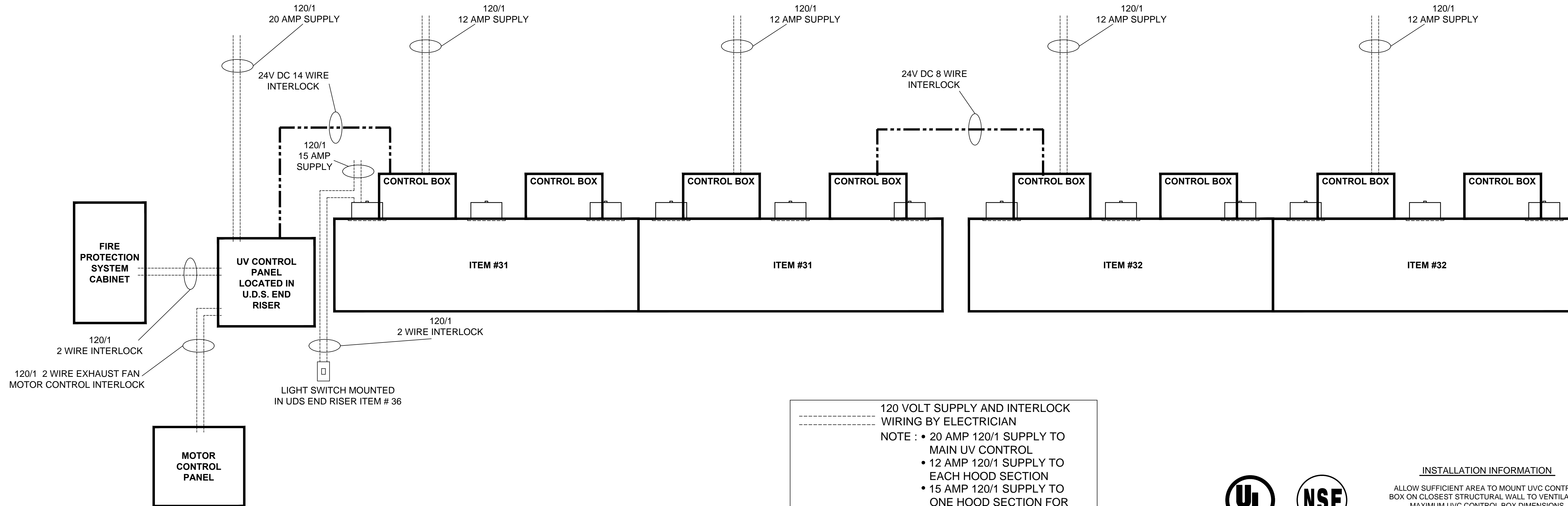
ANSUL R-102 3/3/3/3

CADDY NO. 1497 ITEM NO. 31A

JOB: SOUTH COAST CASINO  
LOC: LAS VEGAS  
CUST:  
CUST#:

**DWG# DQ-1-1497** SHT 4 OF 7

# CADDY ULTRA SERIES HOOD SYSTEM FIELD WIRING DIAGRAM



- - - - - 120 VOLT SUPPLY AND INTERLOCK WIRING BY ELECTRICIAN  
 - - - - - 24 VOLT DC WIRING BY OTHERS  
 NOTE : • 20 AMP 120/1 SUPPLY TO MAIN UV CONTROL  
 • 12 AMP 120/1 SUPPLY TO EACH HOOD SECTION  
 • 15 AMP 120/1 SUPPLY TO ONE HOOD SECTION FOR COOKING EQUIPMENT LIGHTS



**INSTALLATION INFORMATION**  
 ALLOW SUFFICIENT AREA TO MOUNT UVC CONTROL BOX ON CLOSEST STRUCTURAL WALL TO VENTILATOR  
 MAXIMUM UVC CONTROL BOX DIMENSIONS  
 14" LONG x 6 3/8" DEEP x 16" HIGH  
 ESTIMATED TOTAL HANGING WEIGHT: 30 LBS.

**GENERAL CONTRACT CONDITIONS**  
 ELECTRICAL WORK DONE BY CADDY CORPORATION IS EXECUTED IN COMPLIANCE WITH STANDARDS PUBLISHED BY THE UNDERWRITER'S LABORATORIES, INC. INsofar AS APPLICABLE, AND THE LATEST EDITION OF THE NATIONAL ELECTRICAL CODE (NEC). CADDY CORPORATION DOES NOT ACCEPT ANY RESPONSIBILITY FOR THE REQUIREMENTS OF ANY REGIONAL AND/OR LOCAL CODES THAT ADD OR DEVIATED FROM THE ACCEPTED STANDARDS OF THE ABOVE AGENCIES. ANY FIELD WORK RELATING TO THE MODIFICATION OF ELECTRIC OR PLUMBING SYSTEMS, TO MEET REGIONAL OR LOCAL CODE REQUIREMENTS IS TO BE DONE BY OTHERS AND WITHOUT BACK CHARGES TO CADDY CORPORATION, UNLESS THESE CONDITIONS WERE PREVIOUSLY BROUGHT TO OUR ATTENTION AND ARE EXPRESSLY INCLUDED IN OUR WRITTEN QUOTATION. ALL WIRING AND PLUMBING AT THE JOB SITE IS THE RESPONSIBILITY OF OTHERS. EQUIPMENT WILL BE CONSTRUCTED IN ACCORDANCE WITH OUR DRAWING(S) WHICH MUST BE APPROVED PRIOR TO FABRICATION. ANY SUBSEQUENT CHANGES REQUIRED MUST BE SUBMITTED TO US IN WRITING AND ACKNOWLEDGED ON OUR STANDARD FORM.

LEGEND	
SYMBOL	DESCRIPTION
	FLUORESCENT VENTILATOR LIGHT
	100 WATT DOME INCANDESCENT VENTILATOR LIGHT
	150 WATT RECESSED INCANDESCENT VENTILATOR LIGHT
	BALLAST & CONTROL BOX FOR UVC LIGHT SYSTEM

REVISIONS			
REV	DATE	BY	REMARKS

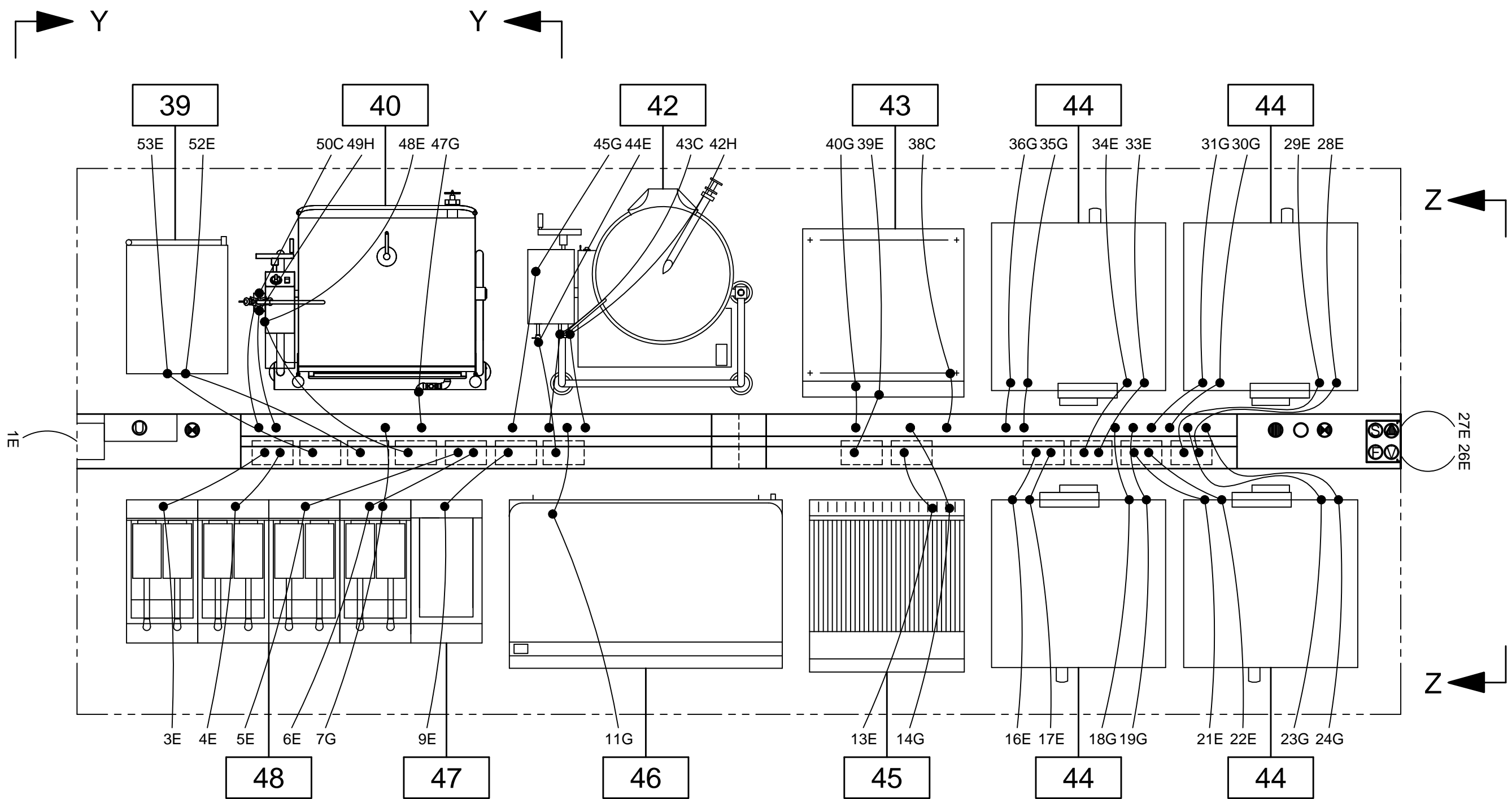
509 SHARPTOWN ROAD P.O. BOX 345 BRIDGEPORT NJ 08014 Tel:(856) 467-4222 Fax:(856) 467-5511	
<b>EQUIPMENT SCHEDULE</b>	
CPE-U	
CADDY NO. 1497	ITEM NO. 31B
JOB: SOUTH COAST CASINO LOC: LAS VEGAS CUST: CUST#:	

DATE	11/23/04	SCALE	AS NOTED
DR BY	DRA	APP'D BY	

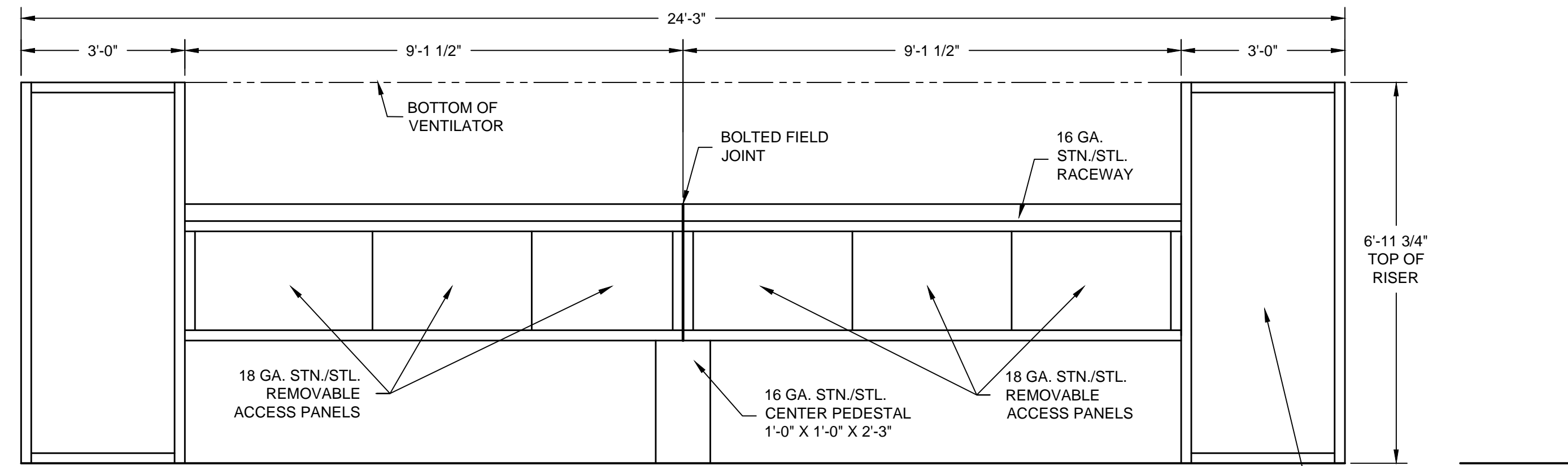
DWG# DQ-1-1497

SHT 5  
OF 7

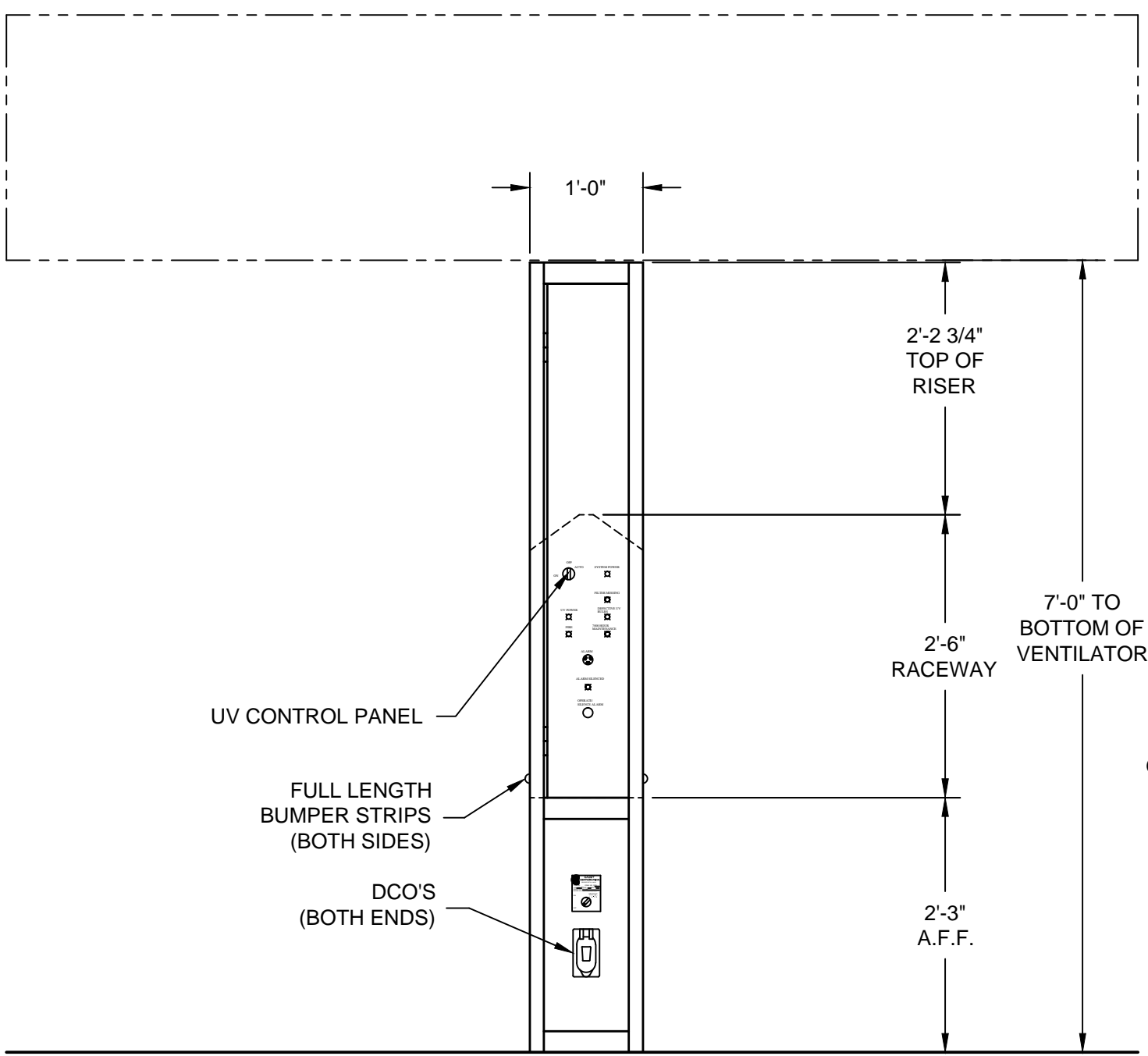


**PLAN VIEW**  
SCALE: 1/2"=1'-0"

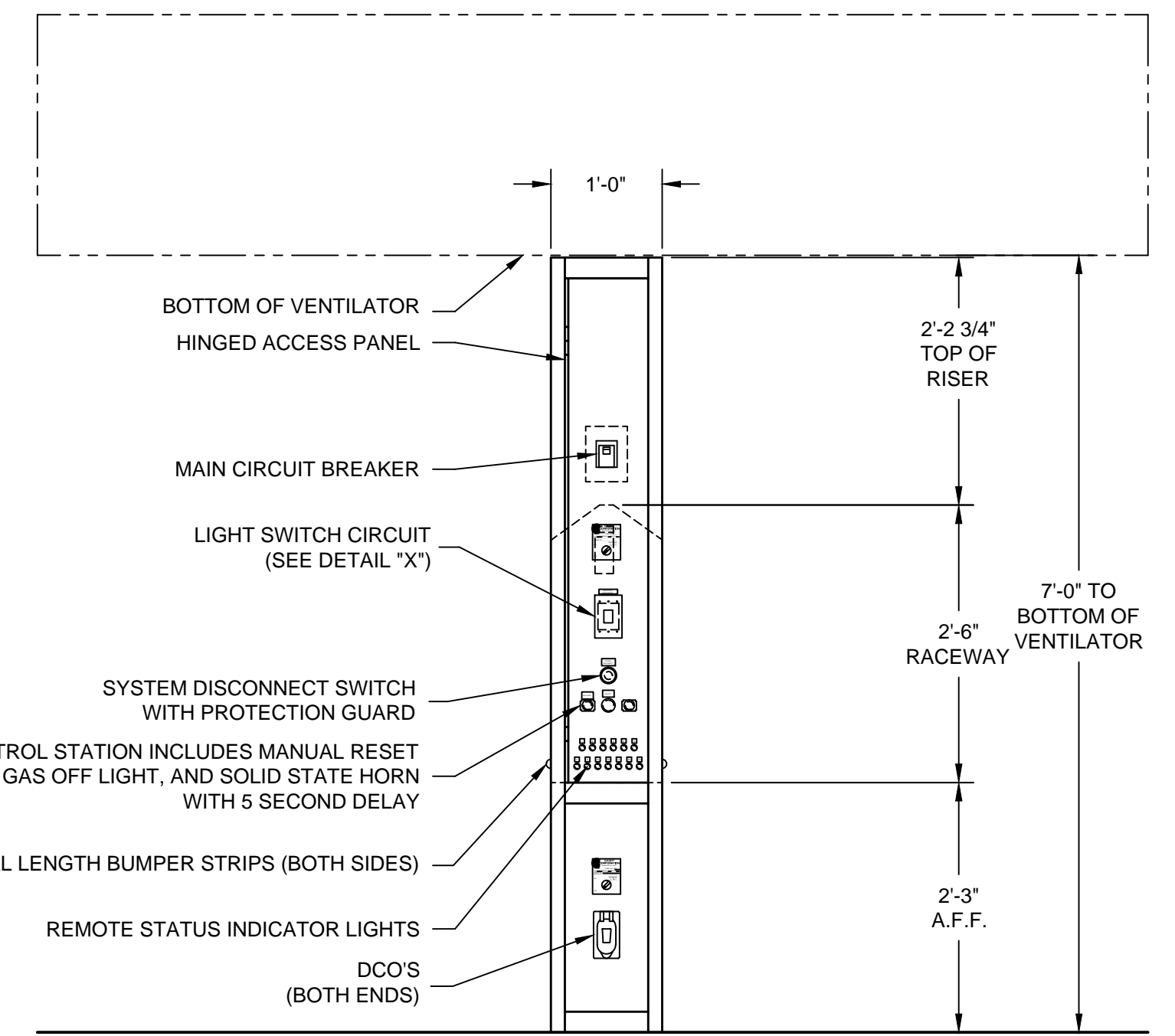
**ALL UTILITIES INCLUDE 25% OVER-CAPACITY FOR FUTURE EXPANSION**



**ELEVATION VIEW**  
SCALE: 1/2"=1'-0"

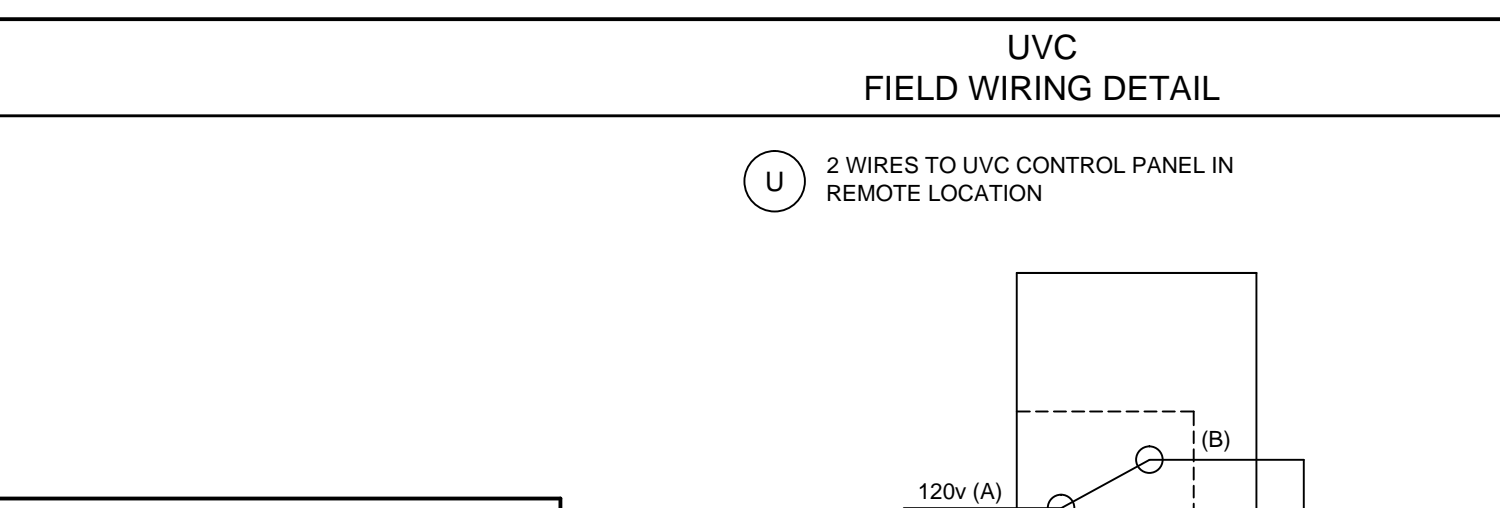
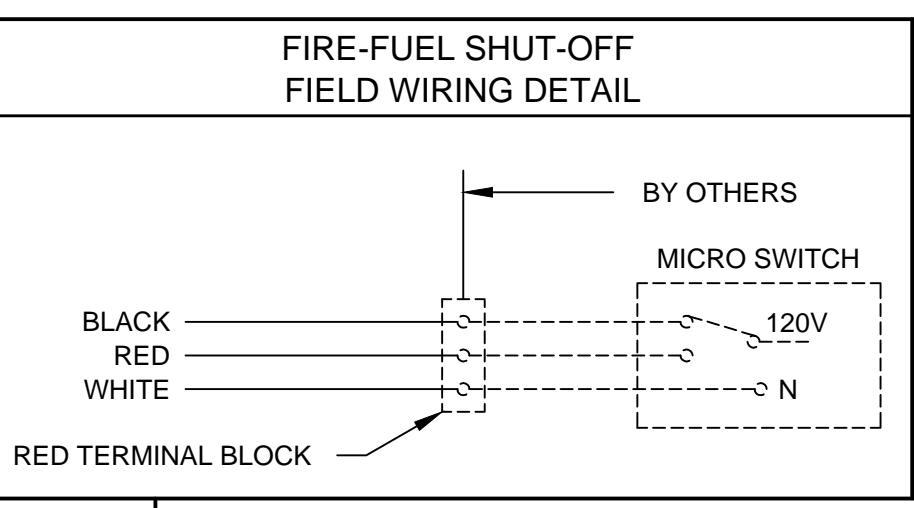
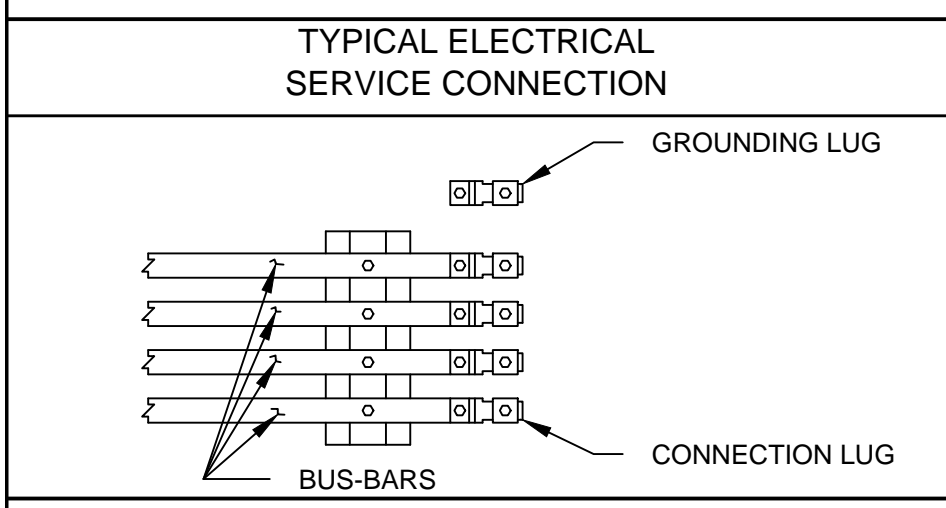
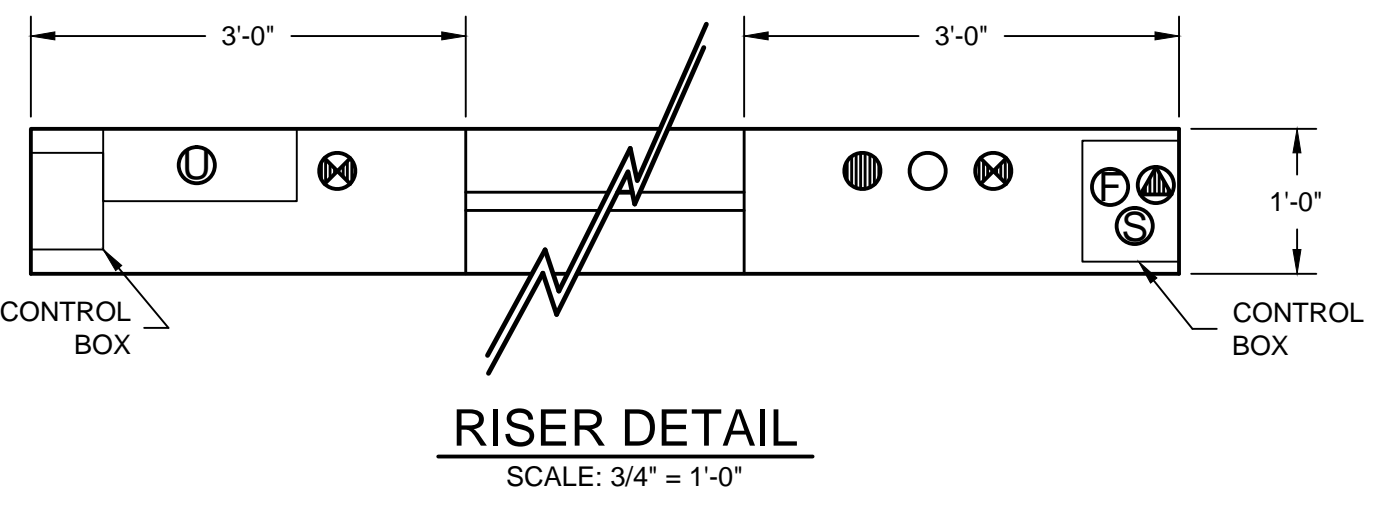
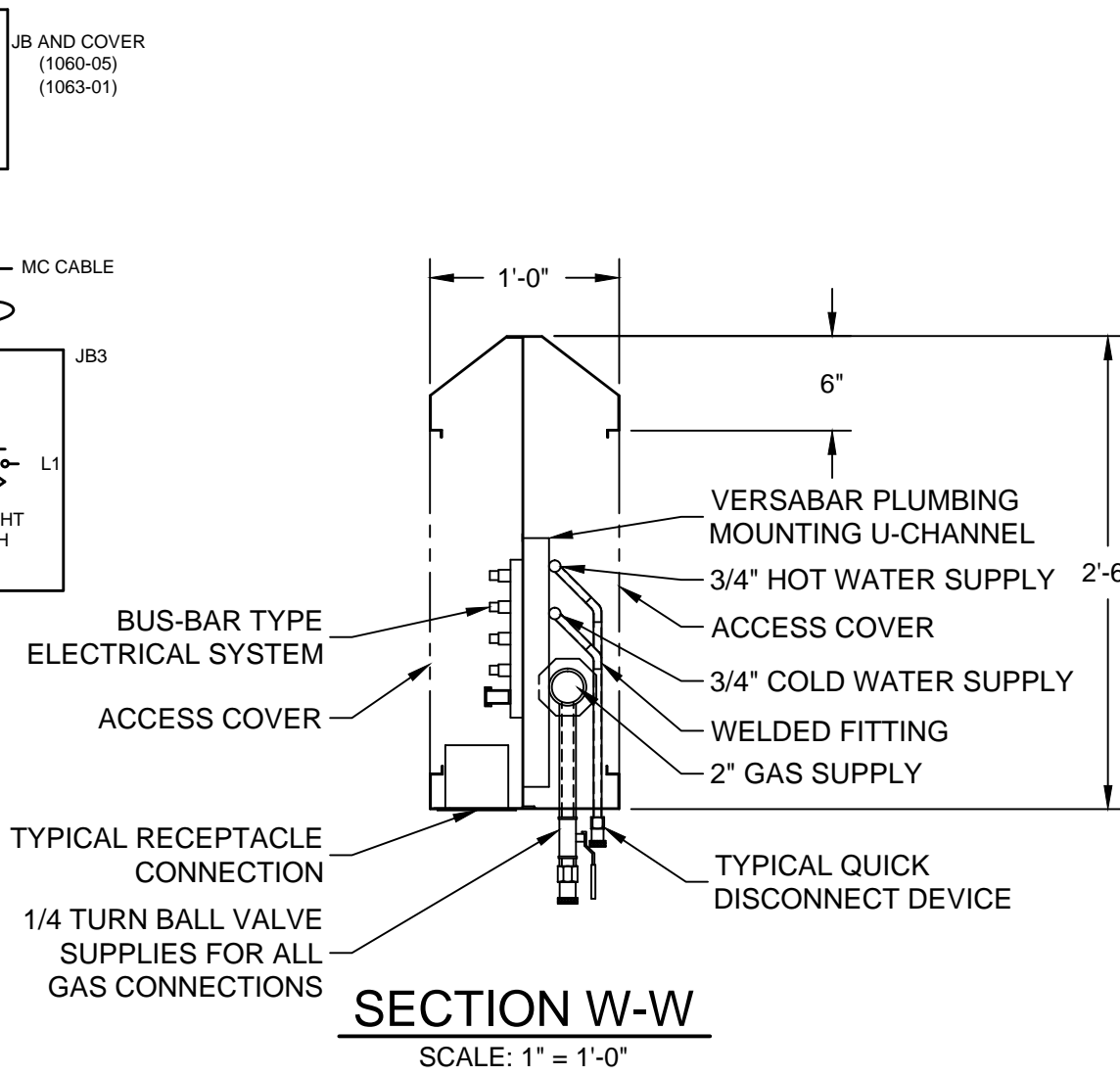
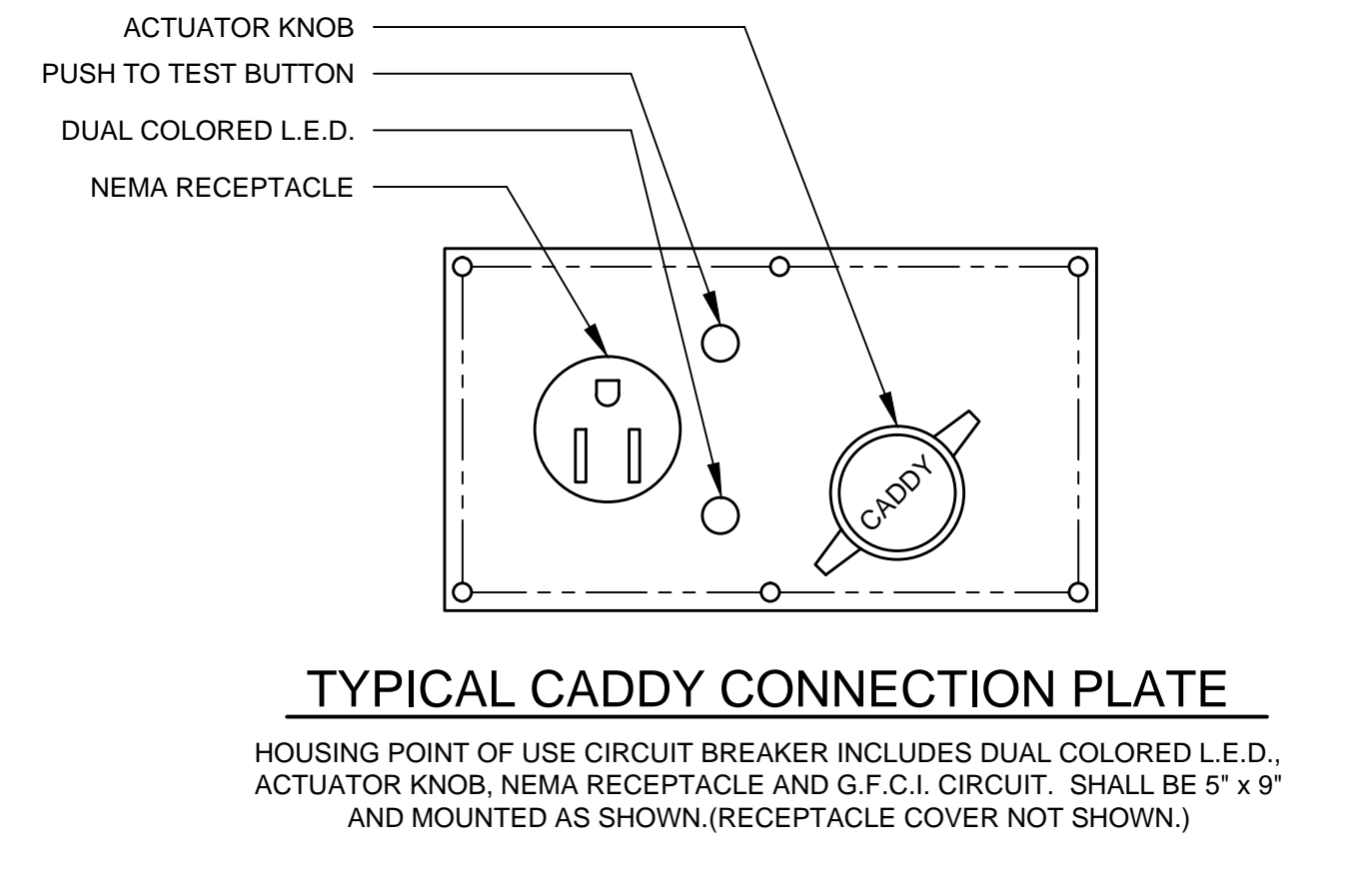


**END VIEW Y-Y**  
SCALE: 3/4"=1'-0"



**END VIEW Z-Z**  
SCALE: 3/4"=1'-0"

**CODE COMPLIANCE**  
THE UTILITY DISTRIBUTION SYSTEM SHALL BE U.L. LISTED UNDER THE CATEGORY "UTILITY DISTRIBUTION SYSTEM" AND MANUFACTURED IN ACCORDANCE WITH THE NATIONAL ELECTRICAL CODE (NEC), NATIONAL ELECTRICAL MANUFACTURER'S ASSOCIATES (NEMA), NATIONAL FIRE PROTECTION ASSOCIATION (NFPA) PAMPHLET NUMBER 96 AND 54, UNIFORM PLUMBING CODE (UPC), AMERICAN SOCIETY OF MECHANICAL ENGINEERS (ASME), NATIONAL SANITATION FOUNDATION (NSF), AND OCCUPATIONAL SAFETY AND HEALTH ADMINISTRATION (OSHA) USING ONLY U.L. LISTED, BUREAU OF MINES RATES, AGA CERTIFIED AND CGA CERTIFIED COMPONENTS.



ROUGH-IN SCHEDULE			PLEASE SPECIFY		
SYM	QTY	DESCRIPTION	CEILING	FLOOR	OTHER
⊗	1	120/208V, 3Ø, 60Hz, 150 AMPS			
⊗	2	2" GAS SUPPLY 2,137 MBH (LOOPED)			
⊗	1	3/4" HOT WATER SUPPLY			
⊗	1	3/4" COLD WATER SUPPLY			
⊗	1	FIRE FUEL SHUT-OFF SEE DETAIL			
⊗	1	120V, 1Ø, 60 HZ., 20 AMPS UV CONTROLS			

REVISIONS				
REV	DATE	BY	REMARKS	
	11/23/04	DRA	AS NOTED	

**CADDY AirSystems**  
509 SHARPTOWN ROAD  
P.O. BOX 345 BRIDGEPORT NJ 08014  
Tel:(856) 467-4222 Fax:(856) 467-5511

**EQUIPMENT SCHEDULE**

UTILITY DISTRIBUTION SYSTEM  
MODEL: CA-ID-EGW-025  
24'-3" LONG

CADDY NO. 1497 ITEM NO. 36

JOB: SOUTH COAST CASINO  
LOC: LAS VEGAS  
CUST:  
CUST#:

**DWG# DQ-1-1497** SHT 6 OF 7

**GENERAL CONTRACT CONDITIONS**  
ELECTRICAL WORK DONE BY CADDY CORPORATION IS EXECUTED IN COMPLIANCE WITH STANDARDS PUBLISHED BY THE UNDERWRITERS LABORATORIES, INC. INSOFAR AS APPLICABLE, AND THE LATEST EDITION OF THE NATIONAL ELECTRICAL CODE (NEC). CADDY CORPORATION DOES NOT ACCEPT ANY RESPONSIBILITY FOR THE REQUIREMENTS OF ANY REGIONAL AND/OR LOCAL CODES THAT ADD OR DEVIATE FROM THE ACCEPTED STANDARDS OF THE ABOVE AGENCIES. ANY FIELD WORK RELATING TO THE MODIFICATION OF ELECTRIC OR PLUMBING SYSTEMS, TO MEET REGIONAL OR LOCAL CODE REQUIREMENTS IS TO BE DONE BY OTHERS AND WITHOUT BACK CHARGES TO CADDY CORPORATION, UNLESS THESE CONDITIONS WERE PREVIOUSLY BROUGHT TO OUR ATTENTION AND ARE EXPRESSLY INCLUDED IN OUR WRITTEN QUOTATION.  
ALL WIRING AND PLUMBING AT THE JOB SITE IS THE RESPONSIBILITY OF OTHERS. EQUIPMENT WILL BE CONSTRUCTED IN ACCORDANCE WITH OUR DRAWING(S) WHICH MUST BE APPROVED PRIOR TO FABRICATION. ANY SUBSEQUENT CHANGES REQUIRED MUST BE SUBMITTED TO US IN WRITING AND ACKNOWLEDGED ON OUR STANDARD FORM.

- NOTES**
- THIS UNIT IS TO BE SHIPPED IN TWO (2) PIECES AS SHOWN IN PLAN VIEW. [ ] VERIFY FOR ENTRANCE INTO BUILDING AND UNIT AREA.
  - [ ] VERIFY ROUGHING SCHEDULE.
  - NAT'L SANITATION FOUNDATION-STANDARD #2-"FOOD SERVICE EQUIPMENT". UNIFORM BUILDING CODE (UBC). UNDERWRITERS LAB INC., U.L. LISTED UNDER FILE #E60695.
  - ALL "VERIFIES" ON THIS DRAWING MUST BE CONFIRMED. YOUR FABRICATION APPROVAL SHALL INDICATE YOUR ACCEPTANCE AS SHOWN.
  - ELECTRICAL CONTRACTOR MUST ROUGH-IN UP TO THE BUS-BAR CONNECTION LUGS. APPROXIMATE 36" A.F.F.

