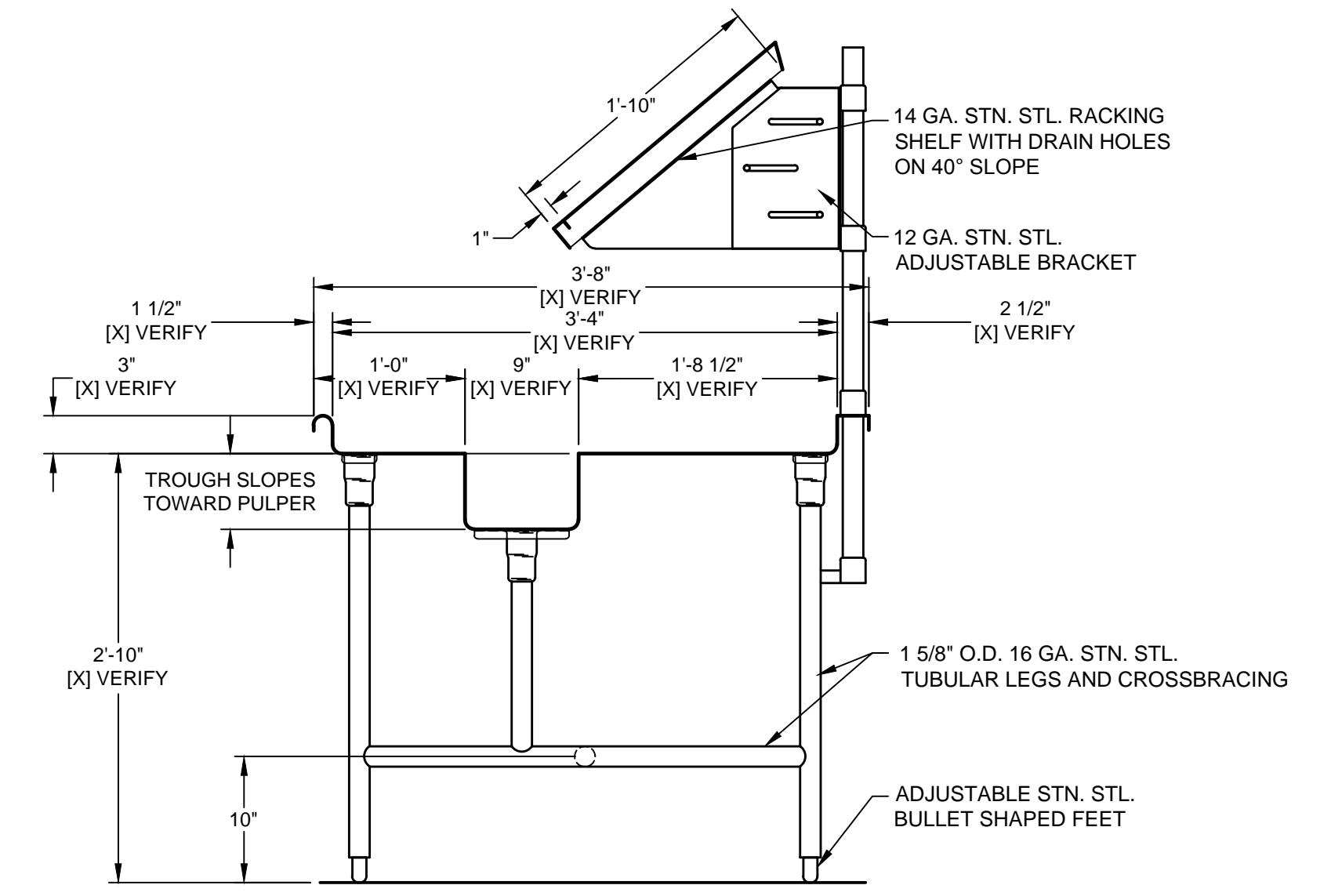
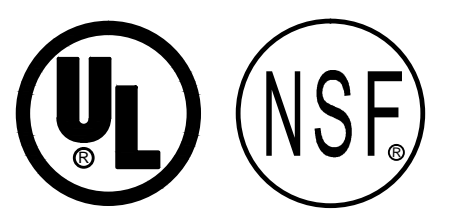


PLAN VIEW
SCALE: 1/2" = 1'-0"



SECTION Z-Z
SCALE: 1" = 1'-0"



NOTES	
1. [X] VERIFY ROUGH-IN SCHEDULE. 2. EACH [] VERIFY ON THIS DRAWING HAS BEEN CONFIRMED. YOUR FABRICATION APPROVAL OF THIS DRAWING INDICATES YOUR ACCEPTANCE AS SHOWN. 3. SOILED DISHTABLE WILL BE SHIPPED IN (1) PIECE AS INDICATED IN THE PLAN VIEW. 4. DISHMACHINE TO BE CHAMPION #UC-CW8-3T-L-R 5. PULPER TO BE SOMAT #UDT-SP-50AS & HE-9S.	

ROUGH-IN SCHEDULE		
NOTE: STUB UP FLOOR ROUGH-INS 4" A.F.F. ROUGH-INS EXTENDING FROM WALLS TO BE 10" A.F.F.		
SYM	QTY	DESCRIPTION
A	2	1 1/2" I.P.S. DIFFUSER 2" DIA. HOLE BY CADDY DIFFUSER BY OTHERS
B	2	1" I.P.S. WATER CONNECTION 1 3/8" DIA. HOLE BY CADDY 1" NIPPLE BY OTHERS
C	2	1 1/2" I.P.S. TWIST HANDLE DRAIN

REVISIONS			
REV	DATE	BY	REMARKS
A	09/17/04	BAH	REVISED PER PULPER DRAWING.
B	06/05/06	DME	REVISED PER APPROVAL DRAWINGS SENT 05/26/06 FOR FABRICATION.
C	06/26/06	DME	NO CHANGES MADE TO THIS SHEET

CADDY AirSystems
509 SHARPTOWN ROAD
P.O. BOX 345 BRIDGEPORT NJ 08014
Tel:(856) 467-4222 Fax:(856) 467-5511

EQUIPMENT SCHEDULE

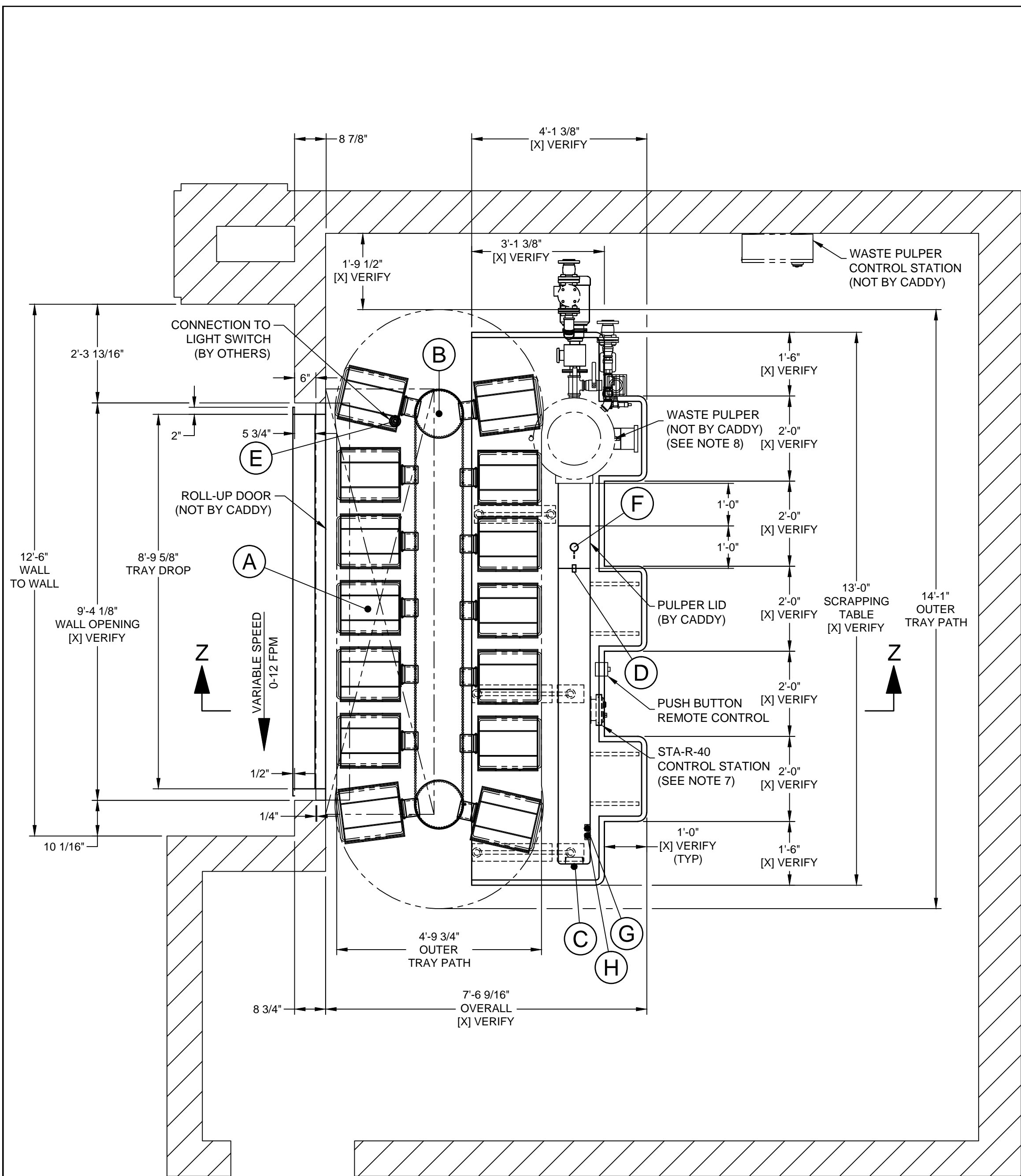
SCRAPPING TABLE WITH TROUGH AND OVERSHELF

CADDY NO. 0640-1 ITEM NO. 183

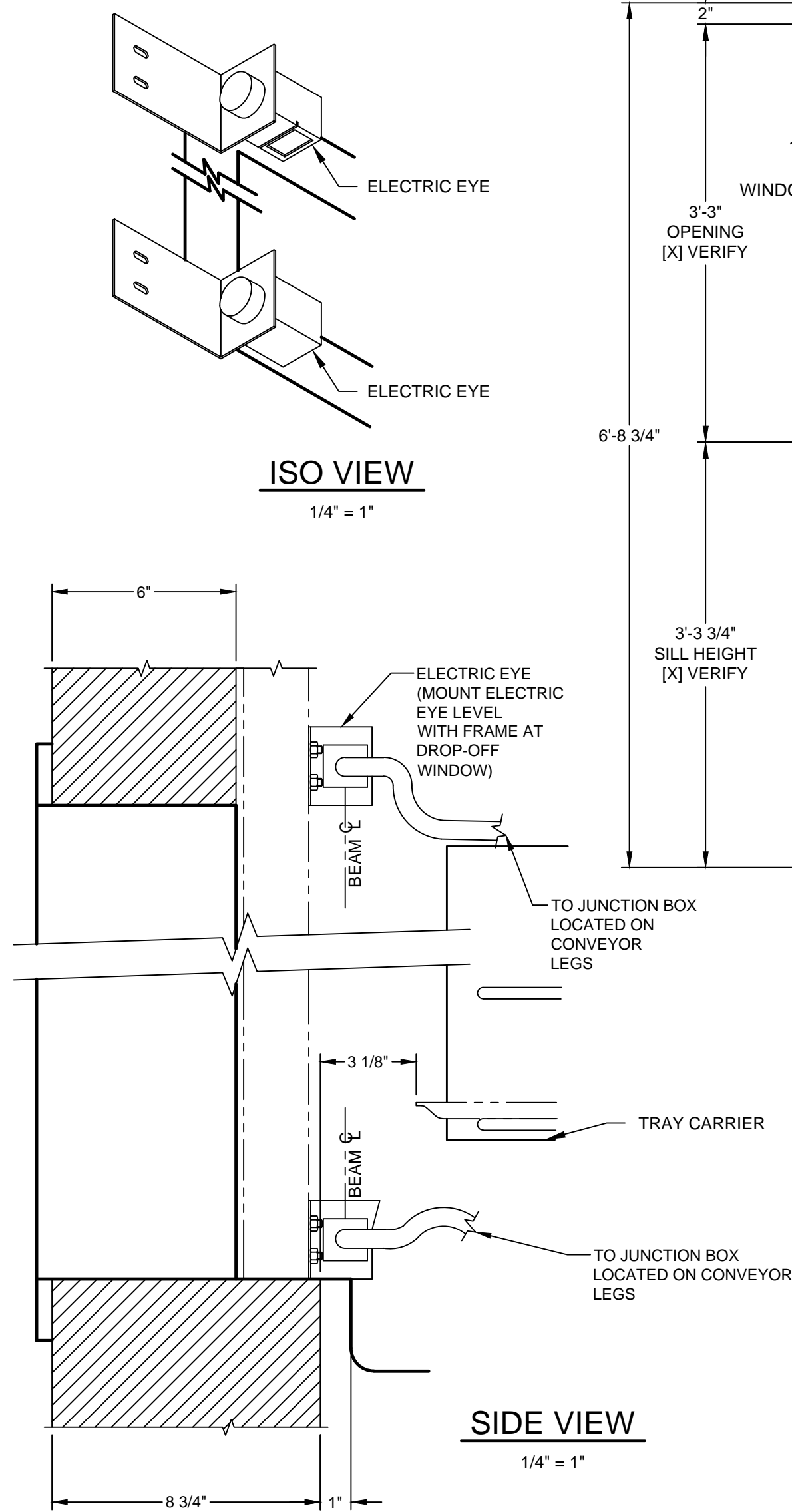
JOB: UNITED STATES CAPITAL
LOC: WASHINGTON D.C.
CUST:
CUST#:

DWG# D-1-0640 SHT 1 OF 3

GENERAL CONTRACT CONDITIONS
ELECTRICAL WORK DONE BY CADDY CORPORATION IS EXECUTED IN COMPLIANCE WITH STANDARDS PUBLISHED BY THE UNDERWRITER'S LABORATORIES, INC. INsofar AS APPLICABLE, AND THE LATEST EDITION OF THE NATIONAL ELECTRICAL CODE (NEC). CADDY CORPORATION DOES NOT ACCEPT ANY RESPONSIBILITY FOR THE REQUIREMENTS OF ANY REGIONAL AND/OR LOCAL CODES THAT ADD OR DEVIATED FROM THE ACCEPTED STANDARDS OF THE ABOVE AGENCIES. ANY FIELD WORK RELATING TO THE MODIFICATION OF ELECTRIC OR PLUMBING SYSTEMS, TO MEET REGIONAL OR LOCAL CODE REQUIREMENTS IS TO BE DONE BY OTHERS AND WITHOUT BACK CHARGES TO CADDY CORPORATION, UNLESS THESE CONDITIONS WERE PREVIOUSLY BROUGHT TO OUR ATTENTION AND ARE EXPRESSLY INCLUDED IN OUR WRITTEN QUOTATION. ALL WIRING AND PLUMBING AT THE JOB SITE IS THE RESPONSIBILITY OF OTHERS. EQUIPMENT WILL BE CONSTRUCTED IN ACCORDANCE WITH OUR DRAWING(S) WHICH MUST BE APPROVED PRIOR TO FABRICATION. ANY SUBSEQUENT CHANGES REQUIRED MUST BE SUBMITTED TO US IN WRITING AND ACKNOWLEDGED ON OUR STANDARD FORM.

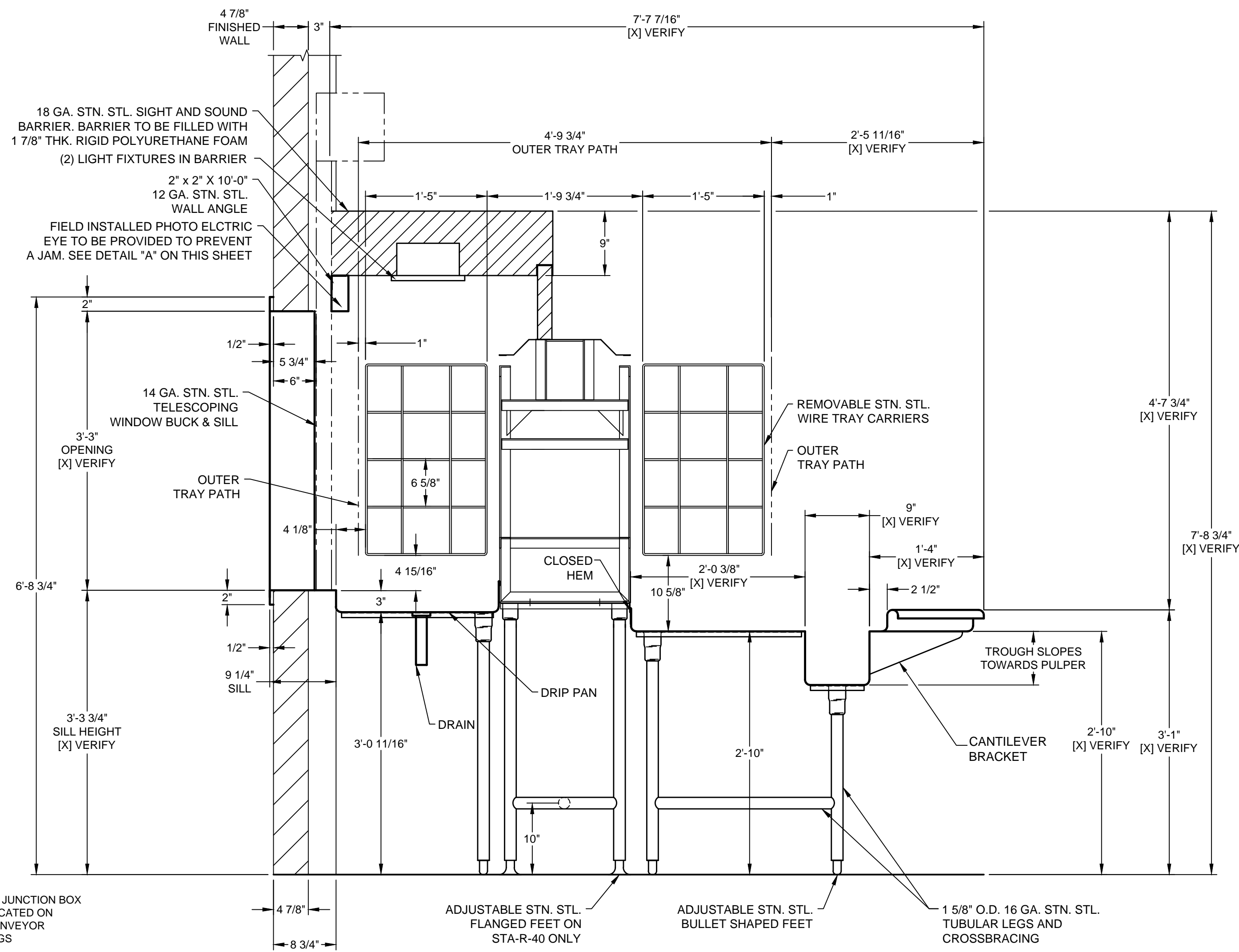


PLAN VIEW
SCALE: 1/2" = 1'-0"



ISO VIEW
1/4" = 1"

SIDE VIEW
1/4" = 1"



SECTION Z-Z
SCALE: 1" = 1'-0"

STA-R-40 TRAY CAPACITY
14 CARRIERS / 4 TRAYS PER CARRIER
56 TRAY TOTAL

STA-R-40 ACCUMULATOR IS DESIGNED TO ACCUMULATE AND CONVEY 14" X 18" TRAYS. CADDY MUST BE PROVIDED WITH A SAMPLE TRAY FOR FABRICATION TO BEGIN.

GENERAL CONTRACT CONDITIONS
ELECTRICAL WORK DONE BY CADDY CORPORATION IS EXECUTED IN COMPLIANCE WITH STANDARDS PUBLISHED BY THE UNDERWRITERS LABORATORIES, INC. (UL) AS APPLICABLE, AND THE LATEST EDITION OF THE NATIONAL ELECTRICAL CODE (NEC). CADDY CORPORATION DOES NOT ACCEPT ANY RESPONSIBILITY FOR THE REQUIREMENTS OF ANY REGIONAL AND/OR LOCAL CODES THAT ADD OR DEVIATE FROM THE ACCEPTED STANDARDS OF THE ABOVE AGENCIES. ANY FIELD WORK RELATING TO THE MODIFICATION OF ELECTRIC OR PLUMBING SYSTEMS, TO MEET REGIONAL OR LOCAL CODE REQUIREMENTS IS TO BE DONE BY OTHERS AND WITHOUT BACK CHARGES TO CADDY CORPORATION, UNLESS THESE CONDITIONS WERE PREVIOUSLY BROUGHT TO OUR ATTENTION AND ARE EXPRESSLY INCLUDED IN OUR WRITTEN QUOTATION. ALL WIRING AND PLUMBING AT THE JOB SITE IS THE RESPONSIBILITY OF OTHERS. EQUIPMENT WILL BE CONSTRUCTED IN ACCORDANCE WITH OUR DRAWING(S) WHICH MUST BE APPROVED PRIOR TO FABRICATION. ANY SUBSEQUENT CHANGES REQUIRED MUST BE SUBMITTED TO US IN WRITING AND ACKNOWLEDGED ON OUR STANDARD FORM.

NOTES	
1.	[X] VERIFY ROUGH-IN SCHEDULE.
2.	EACH "[] VERIFY" ON THIS DRAWING HAS BEEN CONFIRMED. YOUR FABRICATION APPROVAL OF THIS DRAWING INDICATES YOUR ACCEPTANCE AS SHOWN.
3.	CONVEYOR IS TO BE U.L. LISTED WITH LABEL AFFIXED.
4.	CONVEYOR WILL BE SHIPPED IN (1) PIECE WITH CARRIERS REMOVED, DRIP PAN WILL BE SHIPPED IN (1) PIECE, DISHTABLE WILL BE SHIPPED IN (1) PIECE, SIGHT & SOUND BARRIER WILL BE SHIPPED IN (1) PIECE, & WINDOW BUCK & SILL WILL BE SHIPPED IN (3) PIECES AS INDICATED IN PLAN VIEW.
5.	STA-R-40 ACCUMULATOR IS DESIGNED TO ACCUMULATE 14" X 18" TRAYS.
6.	[] VERIFY HEIGHT OF THE TALLEST ITEM TO BE SCRAPPED TO ENSURE ADEQUATE CLEARANCE WHEN TRANSPORTED ON BV-10 UNDER STA-R-40 TRAY CARRIERS.
7.	STA-R-40 CONTROL STATION INCLUDES START/STOP SWITCH & VARIABLE SPEED CONTROL AND JAM INDICATOR LIGHT.
8.	PULPER TO BE SOMAT # UDT-SP-50AS-C181.
9.	WALL DIMENSIONS ARE FOR FINAL, FINISHED WALLS INCLUDING SHEET ROCK, TILE, ETC.

ROUGH-IN SCHEDULE	
NOTE: STUB UP FLOOR ROUGH-INS 4" A.F.F. ROUGH-INS EXTENDING FROM WALLS TO BE 10" A.F.F.	
SYM	QTY DESCRIPTION
A	1 1 1/2" I.P.S. WASTE
B	1 120V., 60HZ., 1PH., 1/2 HP., 15 AMPS.
C	1 1 1/2" I.P.S. DIFFUSER 2" DIA. HOLE BY CADDY DIFFUSER BY OTHERS
D	1 1" I.P.S. WATER CONNECTION 1 3/8" DIA. HOLE BY CADDY 1" NIPPLE BY OTHERS
E	1 120V., 60HZ., 1PH., 15 AMPS. LIGHTS FOR SIGHT AND SOUND BARRIER
F	1 1 1/2" I.P.S. TWIST HANDLE DRAIN
G	1 1/2" I.P.S. COLD WATER FOR MIXING VALVE (BY CADDY)
H	1 1/2" I.P.S. HOT WATER FOR MIXING VALVE (BY CADDY)

REVISIONS			
REV	DATE	BY	REMARKS
A	10/26/04	DME	ADDED UNDER STRUCTURE AND CHANGED WORKTABLE LEGS TO BRACKETS.
B	06/05/06	DME	REVISED PER APPROVAL DRAWINGS SENT 05/26/06 FOR FABRICATION & E-MAIL RECEIVED 06/02/06.
C	06/26/06	DME	REVISED WINDOW BUCK & SILL AND DRIP PAN PER DRAWINGS RECEIVE VIA E-MAIL ON 06/26/06.

CADDY AirSystems
509 SHARPTOWN ROAD
P.O. BOX 345 BRIDGEPORT NJ 08014
Tel:(856) 467-4222 Fax:(856) 467-5511

EQUIPMENT SCHEDULE

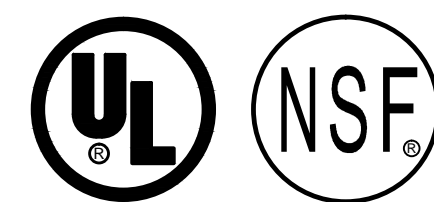
STA-R-40 ACCUMULATOR CONVEYOR WITH SOILED DISHTABLE

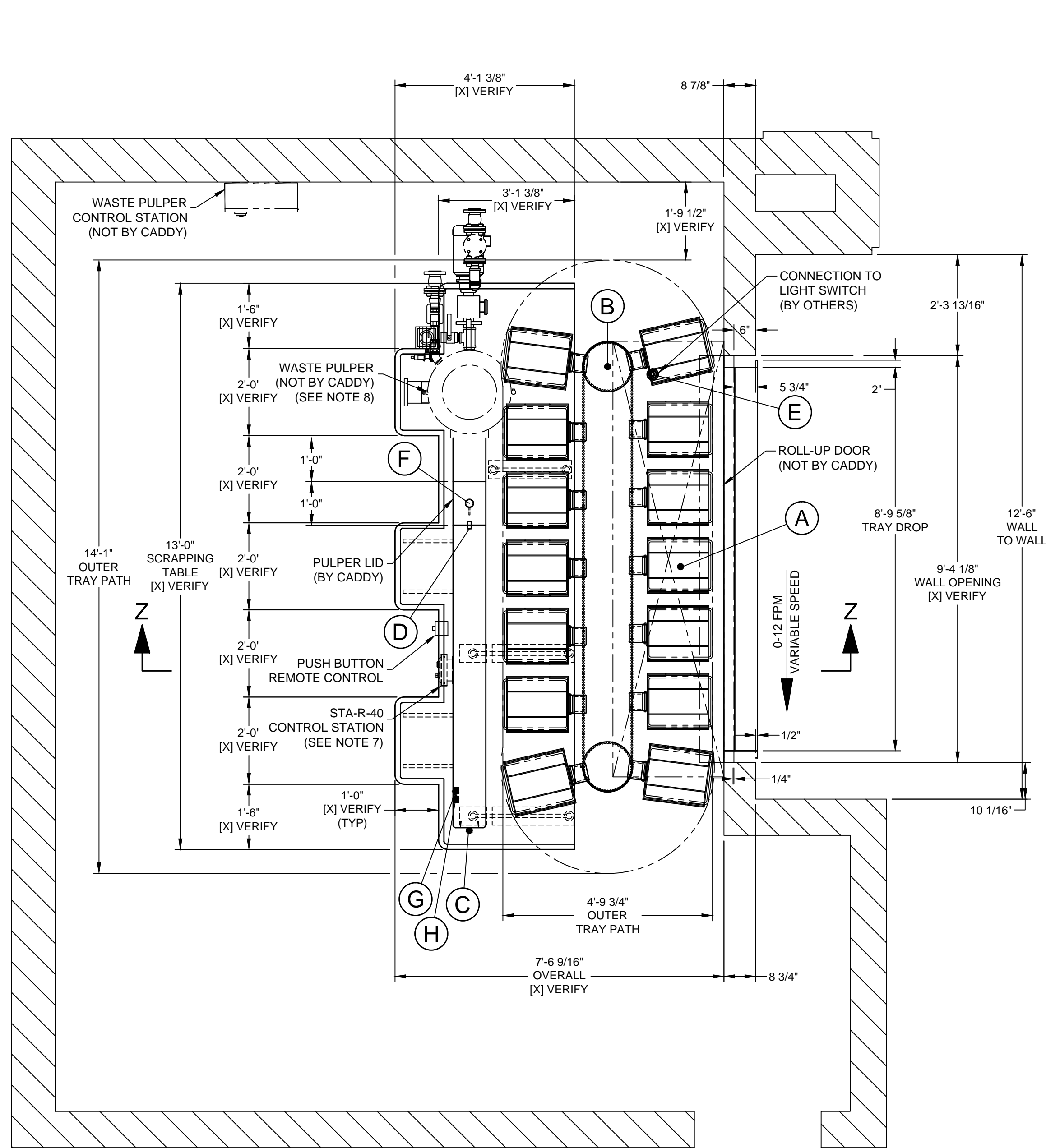
CADDY NO. 0640-2 & 3 ITEM NO. 195/196

JOB: UNITED STATES CAPITAL
LOC: WASHINGTON D.C.
CUST:
CUST#:

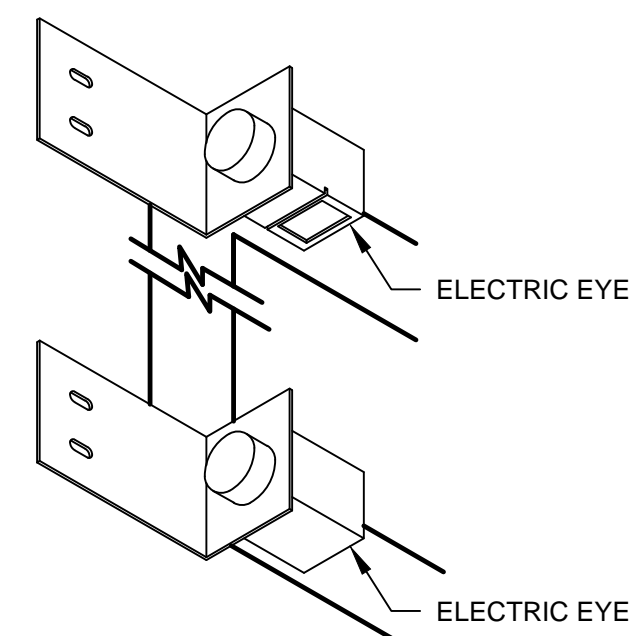
DATE 08/19/04 SCALE AS NOTED
DR BY S.C.O. APP'D BY *B.J.W.*

DWG# D-2-0640 SHT 2 OF 3

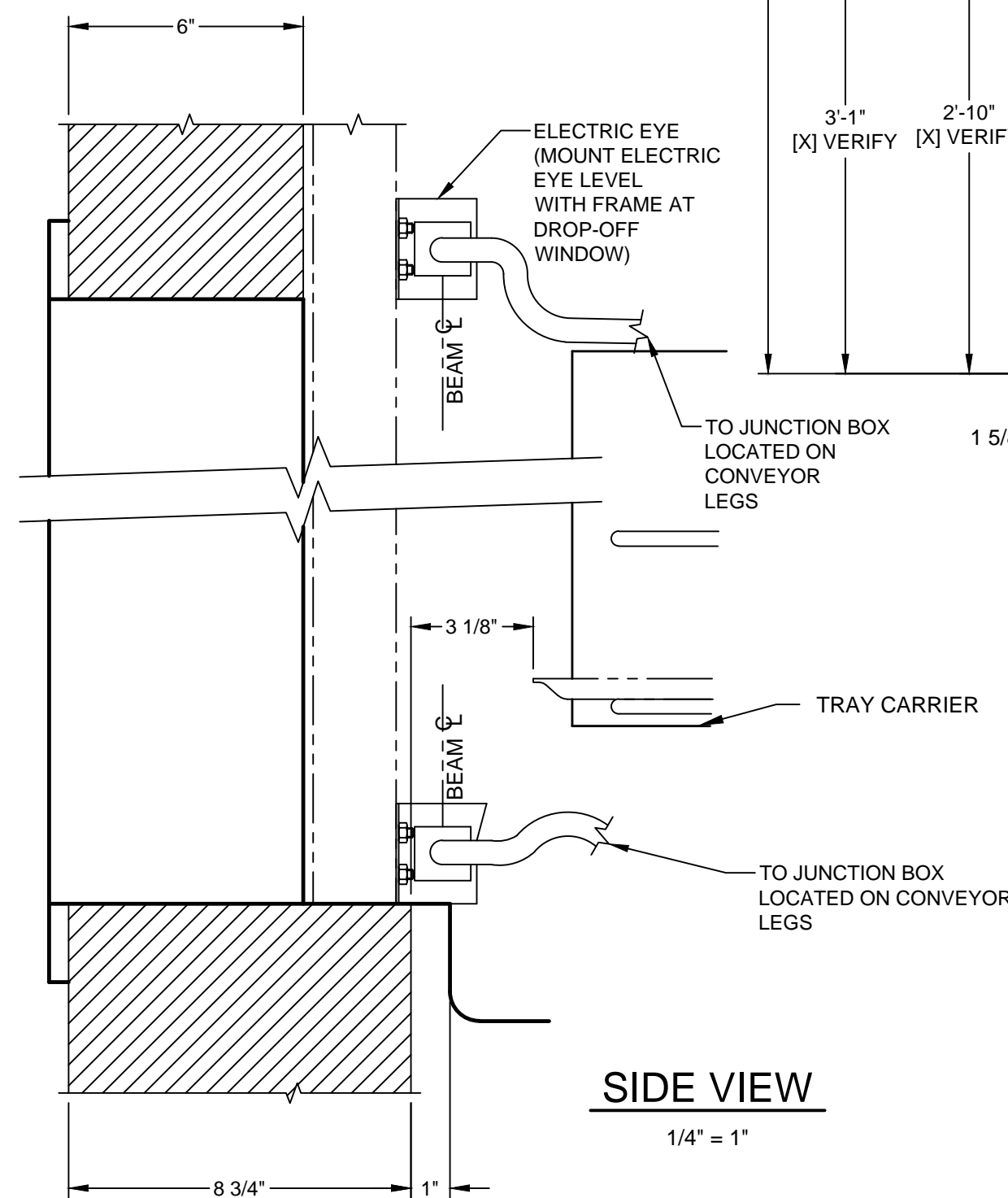




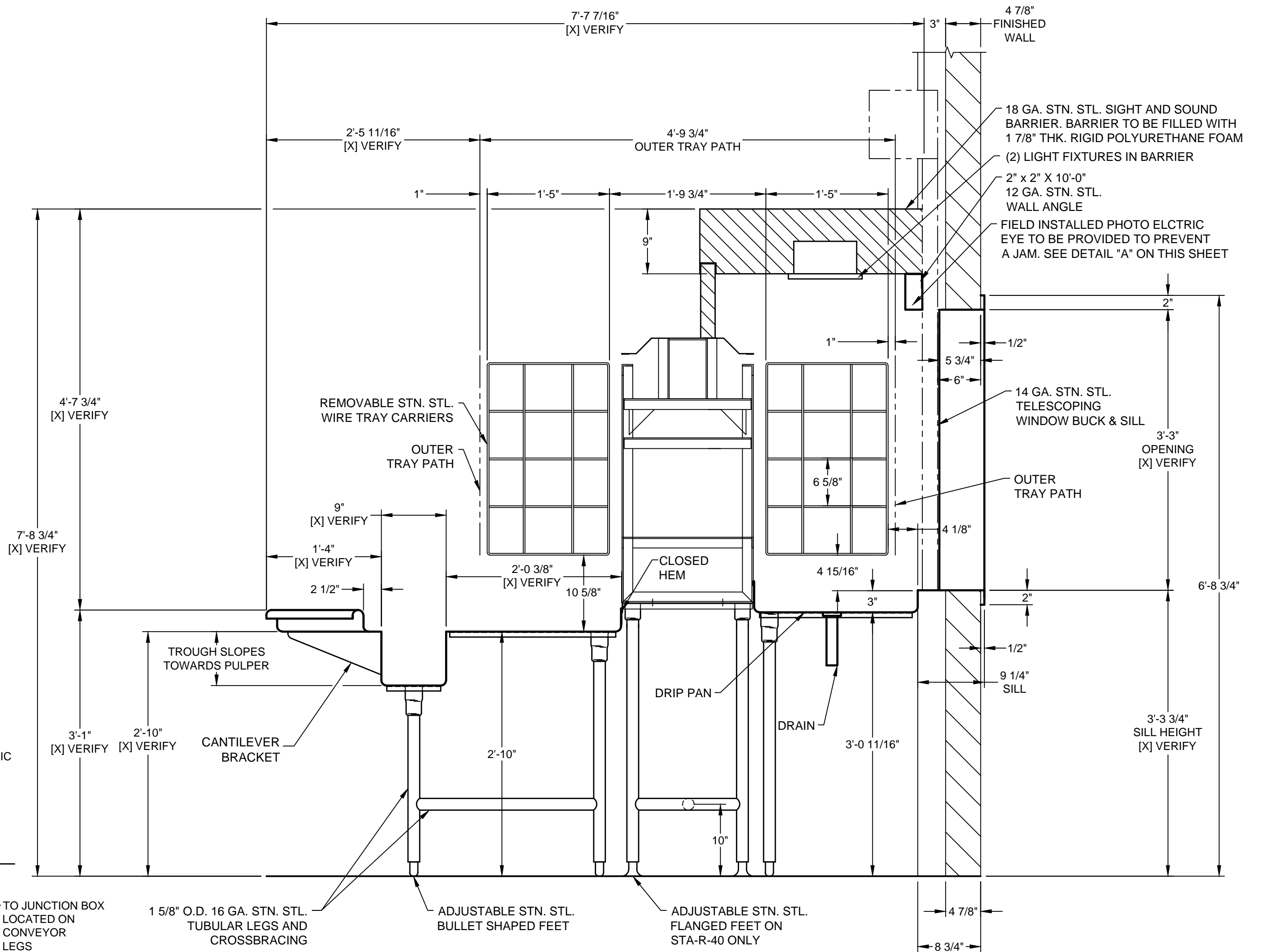
PLAN VIEW
SCALE: 1/2" = 1'-0"



ISO VIEW
1/4" = 1"



SIDE VIEW
1/4" = 1"



SECTION Z-Z
SCALE: 1" = 1'-0"

STA-R-40 TRAY CAPACITY
14 CARRIERS / 4 TRAYS PER CARRIER
56 TRAY TOTAL

STA-R-40 ACCUMULATOR IS DESIGNED TO ACCUMULATE AND CONVEY 14" X 18" TRAYS. CADDY MUST BE PROVIDED WITH A SAMPLE TRAY FOR FABRICATION TO BEGIN.

GENERAL CONTRACT CONDITIONS
ELECTRICAL WORK DONE BY CADDY CORPORATION IS EXECUTED IN COMPLIANCE WITH STANDARDS PUBLISHED BY THE UNDERWRITERS LABORATORIES, INC. INsofar AS APPLICABLE, AND THE LATEST EDITION OF THE NATIONAL ELECTRICAL CODE (NEC). CADDY CORPORATION DOES NOT ACCEPT ANY RESPONSIBILITY FOR THE REQUIREMENTS OF ANY REGIONAL AND/OR LOCAL CODES THAT ADD OR DEVIATE FROM THE ACCEPTED STANDARDS OF THE ABOVE AGENCIES. ANY FIELD WORK RELATING TO THE MODIFICATION OF ELECTRIC OR PLUMBING SYSTEMS, TO MEET REGIONAL OR LOCAL CODE REQUIREMENTS IS TO BE DONE BY OTHERS AND WITHOUT BACK CHARGES TO CADDY CORPORATION, UNLESS THESE CONDITIONS WERE PREVIOUSLY BROUGHT TO OUR ATTENTION AND ARE EXPRESSLY INCLUDED IN OUR WRITTEN QUOTATION. ALL WIRING AND PLUMBING AT THE JOB SITE IS THE RESPONSIBILITY OF OTHERS. EQUIPMENT WILL BE CONSTRUCTED IN ACCORDANCE WITH OUR DRAWING(S) WHICH MUST BE APPROVED PRIOR TO FABRICATION. ANY SUBSEQUENT CHANGES REQUIRED MUST BE SUBMITTED TO US IN WRITING AND ACKNOWLEDGED ON OUR STANDARD FORM.

NOTES

- [X] VERIFY ROUGH-IN SCHEDULE.
- EACH "[] VERIFY" ON THIS DRAWING HAS BEEN CONFIRMED. YOUR FABRICATION APPROVAL OF THIS DRAWING INDICATES YOUR ACCEPTANCE AS SHOWN.
- CONVEYOR IS TO BE U.L. LISTED WITH LABEL AFFIXED.
- CONVEYOR WILL BE SHIPPED IN (1) PIECE WITH CARRIERS REMOVED, DRIP PAN WILL BE SHIPPED IN (1) PIECE, DISHTABLE WILL BE SHIPPED IN (1) PIECE, SIGHT & SOUND Baffle WILL BE SHIPPED IN (1) PIECE, & WINDOW BUCK & SILL WILL BE SHIPPED IN (3) PIECES AS INDICATED IN PLAN VIEW.
- STA-R-40 ACCUMULATOR IS DESIGNED TO ACCUMULATE 14" X 18" TRAYS.
- [] VERIFY HEIGHT OF THE TALLEST ITEM TO BE SCRAPPED TO ENSURE ADEQUATE CLEARANCE WHEN TRANSPORTED ON BV-10 UNDER STA-R-40 TRAY CARRIERS.
- STA-R-40 CONTROL STATION INCLUDES START/STOP SWITCH & VARIABLE SPEED CONTROL AND JAM INDICATOR LIGHT.
- PULPER TO BE SOMAT # UDT-SP-50AS-C181.
- WALL DIMENSIONS ARE FOR FINAL, FINISHED WALLS INCLUDING SHEET ROCK, TILE, ETC.

ROUGH-IN SCHEDULE

NOTE: STUB UP FLOOR ROUGH-INS 4" A.F.F.
ROUGH-INS EXTENDING FROM WALLS TO BE 10" A.F.F.

SYM	QTY	DESCRIPTION
A	1	1 1/2" I.P.S. WASTE
B	1	120V., 60HZ., 1PH., 1/2 HP., 15 AMPS.
C	1	1 1/2" I.P.S. DIFFUSER 2" DIA. HOLE BY CADDY DIFFUSER BY OTHERS
D	1	1" I.P.S. WATER CONNECTION 1 3/8" DIA. HOLE BY CADDY 1" NIPPLE BY OTHERS
E	1	120V., 60HZ., 1PH., 15 AMPS. LIGHTS FOR SIGHT AND SOUND BARRIER
F	1	1 1/2" I.P.S. TWIST HANDLE DRAIN
G	1	1/2" I.P.S. COLD WATER FOR MIXING VALVE (BY CADDY)
H	1	1/2" I.P.S. HOT WATER FOR MIXING VALVE (BY CADDY)

REVISIONS

REV	DATE	BY	REMARKS
A	10/26/04	DME	ADDED UNDER STRUCTURE AND CHANGED WORKTABLE LEGS TO BRACKETS.
B	06/05/06	DME	REVISED PER APPROVAL DRAWINGS SENT 05/26/06 FOR FABRICATION & E-MAIL RECEIVED 06/02/06.
C	06/26/06	DME	REVISED WINDOW BUCK & SILL AND DRIP PAN PER DRAWINGS RECEIVE VIA E-MAIL ON 06/26/06.

CADDY AirSystems
509 SHARPTOWN ROAD
P.O. BOX 345 BRIDGEPORT NJ 08014
Tel:(856) 467-4222 Fax:(856) 467-5511

EQUIPMENT SCHEDULE

STA-R-40 ACCUMULATOR CONVEYOR WITH SOILED DISHTABLE

CADDY NO. 0640-4 & 5 ITEM NO. 201/202

JOB: UNITED STATES CAPITAL
LOC: WASHINGTON D.C.
CUST:
CUST#:

DATE: 08/19/04 SCALE: AS NOTED
DR BY: S.C.O. APP'D BY: B.J.W.

DWG# D-3-0640 SHT 3 OF 3

