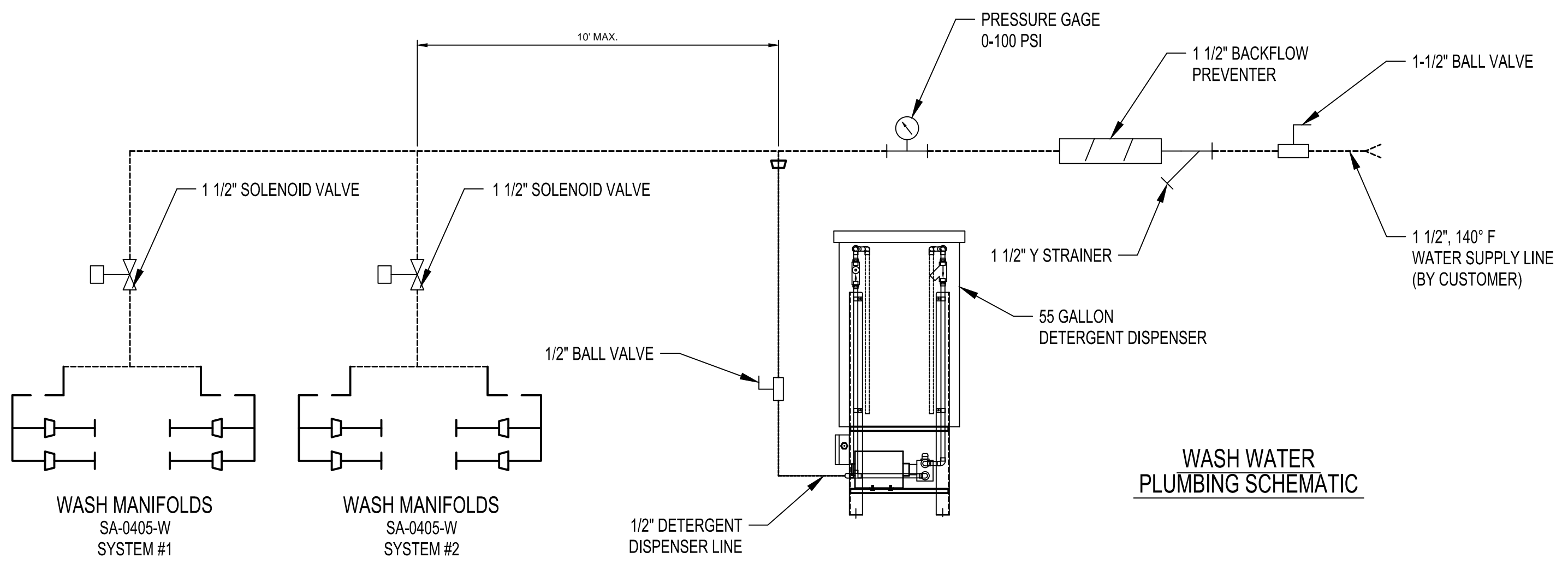
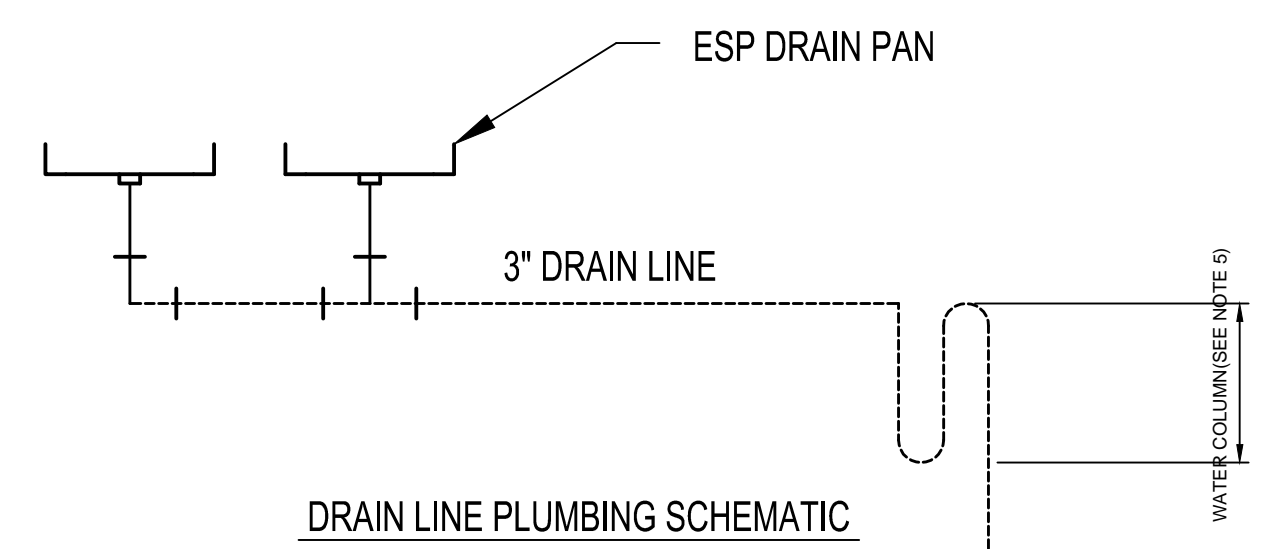
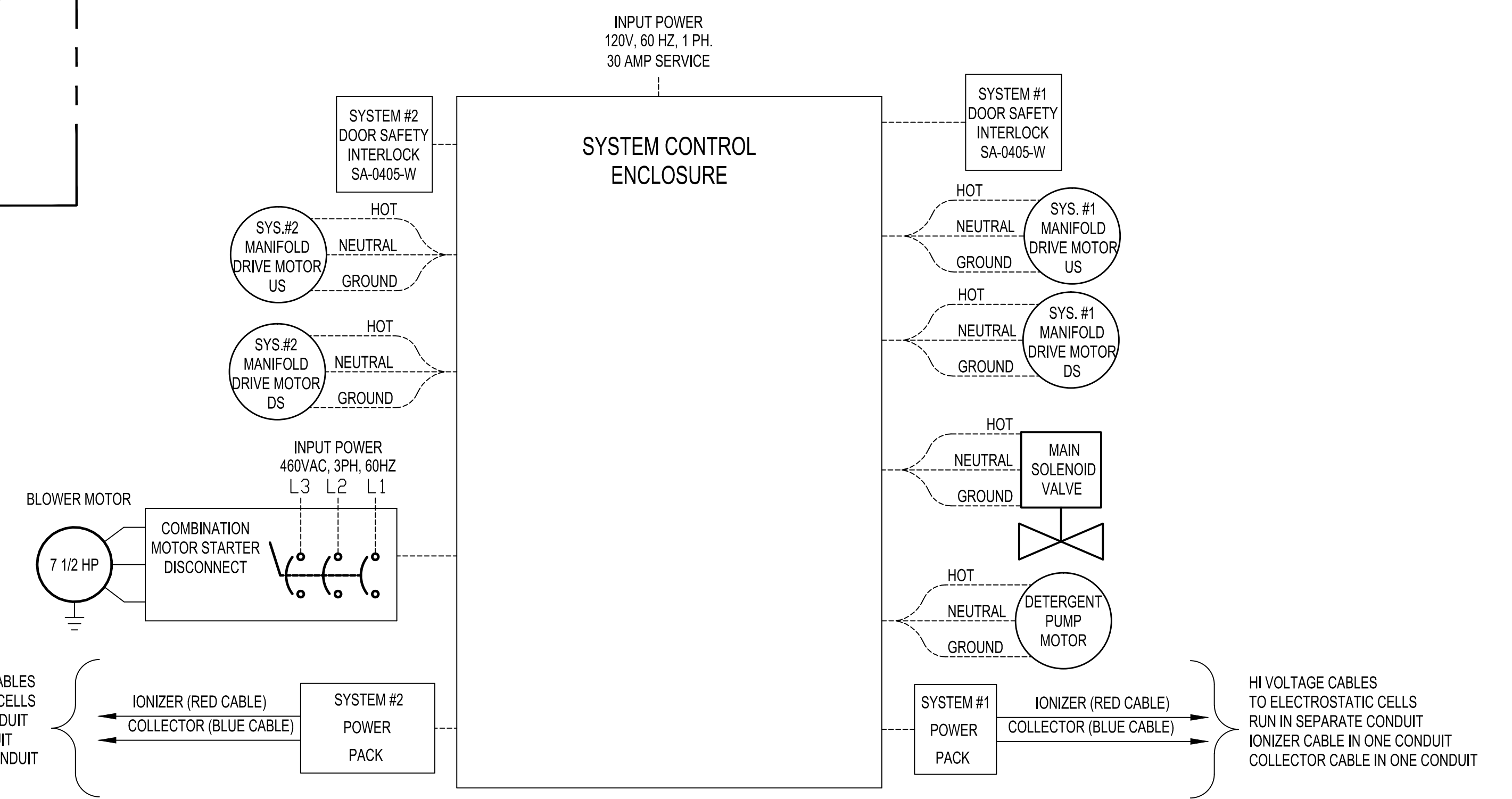


PLAN VIEW
SCALE 3/4\"/>



WASH WATER PLUMBING SCHEMATIC

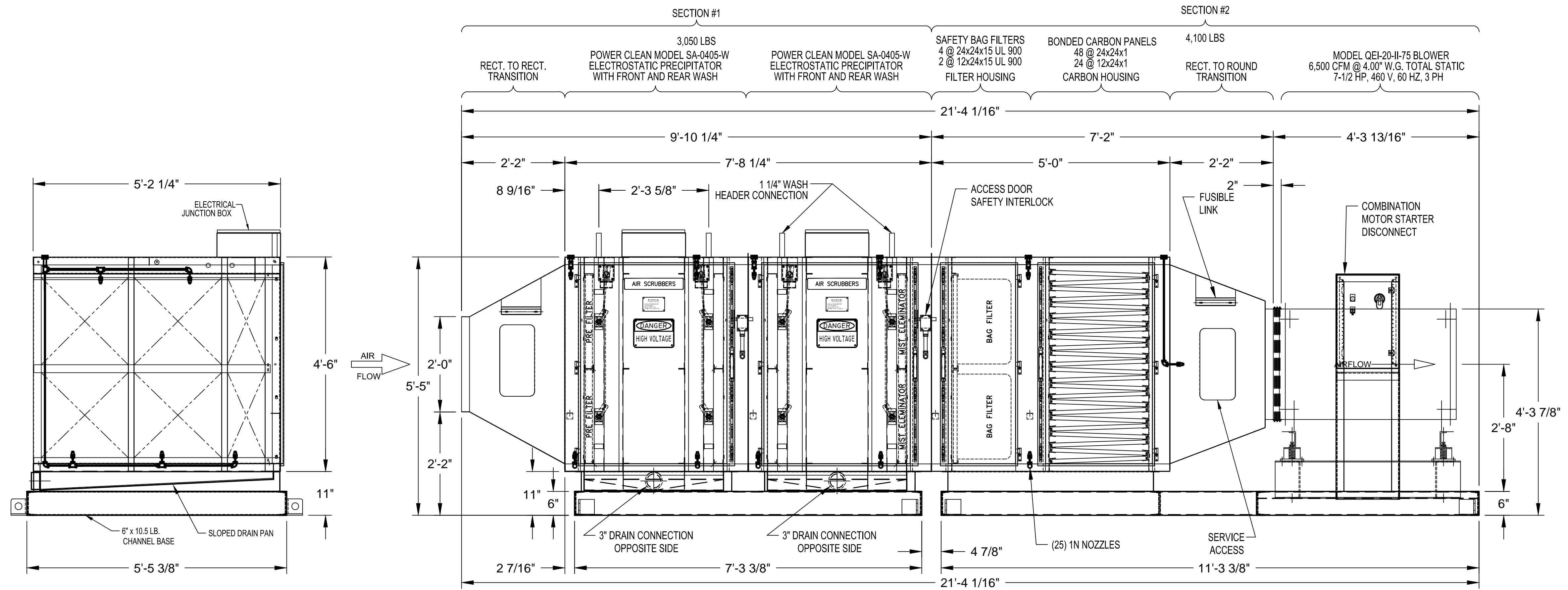


- NOTES:
- 1) MODEL SA-0405-0405-W-SF-C-B IS FURNISHED AS SHOWN EXCEPT CARBON PANELS ARE SHIPPED IN BOXES. DO NOT UNPACK UNTIL READY FOR OPERATION.
 - 2) WASH WATER REQUIREMENTS: 24.0 GPM X 8 MINUTES 192 GALLONS @ 45 PSI, TEMPERATURE 140°F.
 - 3) PIPING AND ELECTRICAL SHOWN WITH BROKEN LINES (---) TO BE FURNISHED AND FIELD INSTALLED BY THE CONTRACTOR.
 - 4) ALL COMPONENTS SHOWN WITH SOLID LINES FURNISHED BY AIR SCRUBBERS, INC., FOR FIELD INSTALLATION BY THE CONTRACTOR.
 - 5) TRAPPED DRAIN LINE WATER COLUMN TO BE SIZED FOR TOTAL SYSTEM LOSS + 1.0' W.G.
 - 6) UNIT WEIGHT: 7,150 LBS. SECTION #1: 3,050 LBS. SECTION #2: 4,100 LBSW.
 - 7) A LISTED FIRE SYSTEM SHALL BE FACTORY PRE PIPED USING DETECTORS AND NOZZLES AS INSTRUCTED BY THE MANUFACTURER, 27 FLOW POINTS. FIELD CONNECTIONS, TANKS, CONTROLS, COMMISSIONING BY OTHERS ON SITE. THE AHJ MAY REQUIRE OTHER PROTECTION.
 - 8) THIS EQUIPMENT CONFORMS TO NFPA 96 AND IS LISTED TO UL 710 & ANSI/UL 867.
 - 9) SYSTEM CONTROL, POWER PACK & DETERGENT DISPENSER MUST BE LOCATED INDOORS IN A FREEZE PROOF AREA. THESE COMPONENTS MUST ALSO BE LOCATED IN AN AREA CONVENIENT FOR MONITORING/SERVICING.
 - 10) WATER SUPPLY/DRAIN AND DETERGENT LINES THAT ARE EXPOSED TO THE ELEMENTS MUST BE TRACE HEATED AND INSULATED TO PREVENT FREEZING.
 - 11) DETERGENT LINE CONNECTION TO THE WATER SUPPLY LINE MUST BE WITHIN 10 FEET OF THE CONNECTION TO THE WASH HEADERS.
 - 12) THIS UNIT SHIPS IN 2 SECTIONS. THE SECTIONS MUST BE JOINED TOGETHER ACCORDING TO DIRECTION FROM THE LOCAL AHJ.
 - 13) THESE MOUNTING PADS ARE DESIGNED TO BE USED AS ANCHOR POINTS TO SECURE THIS EQUIPMENT TO AN UNDERNEATH STRUCTURE SUCH AS A CONCRETE PAD OR A MEZZANINE. DO NOT USE THESE PADS TO HANG THIS EQUIPMENT FROM OVERHEAD.

REVISIONS			
REV	DATE	BY	REMARKS
A	3-6-14	DRA	REDUCED TO A 6500 CFM UNIT AND CHANGED TO AN INLINE FAN

CADDY CORPORATION	
509 Sharptown Road Bridgeport, NJ 08014-0345 Tel: 856-467-4222 Internet: www.caddycorp.com	P.O. Box 345 Fax: 856-467-5511
EQUIPMENT SCHEDULE	
SA-0405-0405-W-SF-C-B	
CADDY NO. 12509	ITEM NO.
JOB: LOEWS CHICAGO PHASE II LOC: CHICAGO, IL. CUST: CUST#:	
DATE: 2-17-14	SCALE: AS NOTED
DR BY: DRA	APPD BY: <i>BPN</i>

DWG# DQ-1-19499 SHT 1 OF 2



FRONT ELEVATION
(TRANSITION NOT SHOWN)
SCALE 3/4" TO 1'-0"

SIDE ELEVATION
SCALE 3/4" TO 1'-0"

NOTES:

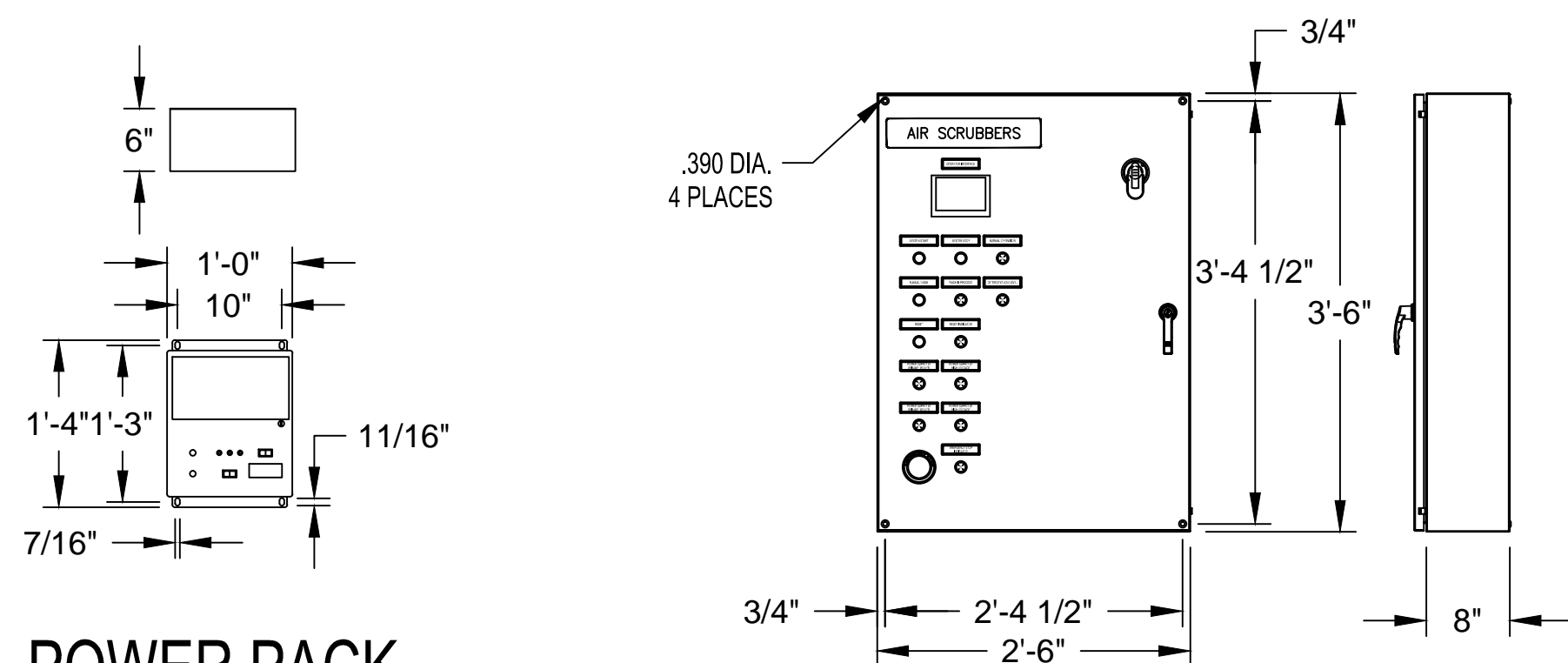
SYSTEM CONTROL

1. PANEL SHALL BE NEMA 3R TYPE.
2. PANEL SHALL BE FURNISHED ASSEMBLED AND INTERNALLY PRE WIRED, CONSISTING OF PLC, RELAYS, CIRCUIT BREAKERS, ON-OFF DISCONNECT, INDICATING LIGHTS AND SWITCHES
3. PANEL SHALL CONTAIN HINGED, FRONT ACCESS DOOR WITH DOOR CLAMPS, PADLOCKING HASP AND STAPLE.
4. WEIGHT 150 LB.. POWER PACK

1. PANEL SHALL BE NEMA 1 TYPE.
2. PANEL SHALL BE FURNISHED ASSEMBLED AND INTERNALLY PRE WIRED, CONSISTING OF HIGH VOLTAGE, SOLID STATE, REGULATED POWER SUPPLY, CONTAINING ELECTRICAL CURRENT LIMITING, ARC SUPPRESSION CIRCUITRY, INDICATING LIGHTS FOR PRIMARY POWER AND HI VOLTAGE.
3. PANEL SHALL CONTAIN HINGED, FRONT ACCESS DOOR WITH ELECTRICAL INTER LOCK TO PREVENT EXPOSURE TO HIGH VOLTAGE.
4. WEIGHT 35 LB..

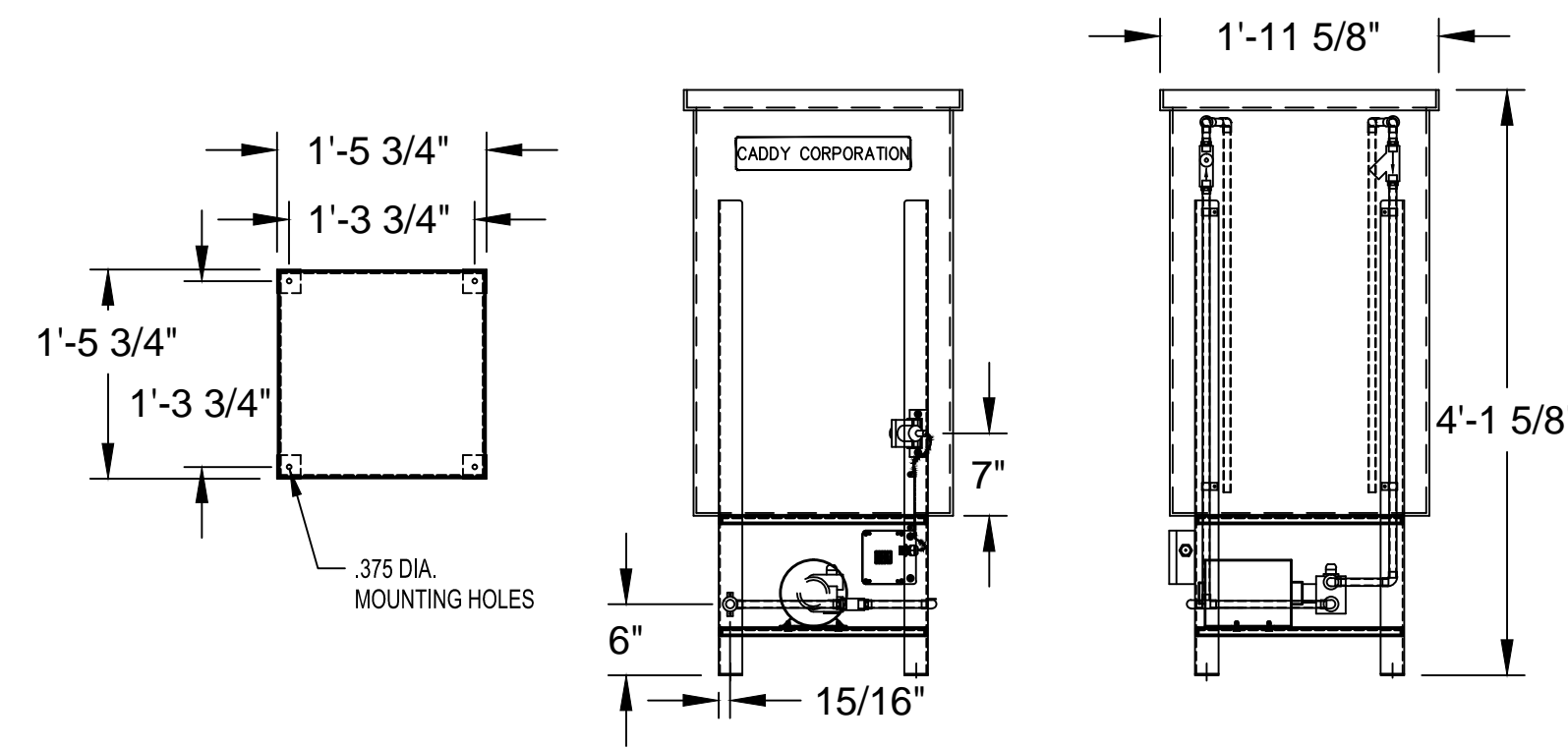
NOTES:

1. STAND TO BE FABRICATED FROM 11 GA. GALVANIZED STEEL, PRIMED AND PAINTED.
2. RESERVOIR SHALL BE 55 GALLON CAPACITY, POLYPROPYLENE.
3. PUMP SHALL BE ANTI-CORROSIVE, POSITIVE DISPLACEMENT TYPE, RATED FOR 5.4 GPM @ 60 PSIG.
4. MOTOR SHALL BE 120 VAC, 1 PH, 60 HZ, 1/2 HP, TEFC.
5. DURING COMMISSIONING FLOW CONTROL VALVE SHALL BE PRESET FOR 2.4 GALLON PER ESP WASH CYCLE.



POWER PACK

SYSTEM CONTROL



DETERGENT DISPENSER ASSY.

GENERAL CONTRACT CONDITIONS

ELECTRICAL WORK DONE BY CADDY CORPORATION IS EXECUTED IN COMPLIANCE WITH STANDARDS PUBLISHED BY THE UNDERWRITER'S LABORATORIES, INC. INsofar AS APPLICABLE, AND THE LATEST EDITION OF THE NATIONAL ELECTRICAL CODE (NEC). CADDY CORPORATION DOES NOT ACCEPT ANY RESPONSIBILITY FOR THE REQUIREMENTS OF ANY REGIONAL AND/OR LOCAL CODES THAT ADD OR DEVIATED FROM THE ACCEPTED STANDARDS OF THE ABOVE AGENCIES. ANY FIELD WORK RELATING TO THE MODIFICATION OF ELECTRIC OR PLUMBING SYSTEMS, TO MEET REGIONAL OR LOCAL CODE REQUIREMENTS, IS TO BE DONE BY OTHERS AND WITHOUT BACK CHARGES TO CADDY CORPORATION, UNLESS THESE CONDITIONS WERE PREVIOUSLY BROUGHT TO OUR ATTENTION AND ARE EXPRESSLY INCLUDED IN OUR WRITTEN QUOTATION. ALL WIRING AND PLUMBING AT THE JOB SITE IS THE RESPONSIBILITY OF OTHERS. EQUIPMENT WILL BE CONSTRUCTED IN ACCORDANCE WITH OUR DRAWING(S) WHICH MUST BE APPROVED PRIOR TO FABRICATION. ANY SUBSEQUENT CHANGES REQUIRED MUST BE SUBMITTED TO US IN WRITING AND ACKNOWLEDGED ON OUR STANDARD FORM.

REVISIONS			
REV	DATE	BY	REMARKS
A	3-6-14	DRA	REDUCED TO A 6500 CFM UNIT AND CHANGED TO AN INLINE FAN

CADDY CORPORATION 509 Sharptown Road, P.O. Box 345 Bridgeport, NJ 08014-0345 Tel: 856-467-4222 Internet: www.caddycorp.com Fax: 856-467-5511	
EQUIPMENT SCHEDULE	
SA-0405-0405-W-SF-C-B	
CADDY NO. 12509	ITEM NO.
JOB: LOEWS CHICAGO PHASE II	
LOC: CHICAGO, IL.	
CUST:	
CUST#:	

DATE	2-17-14	SCALE	AS NOTED	DWG# DQ-1-19499	SHT 2 OF 2
DR BY	DRA	APPD BY	BPN		