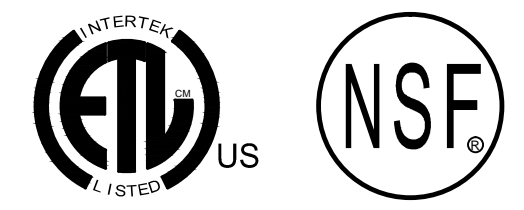


POWERED ROLLER CONVEYOR IS DESIGNED TO TRANSPORT 20" X 20" RACKS

CF-10 CONVEYOR IS DESIGNED TO TRANSPORT UP TO 16" WIDE FLAT BOTTOM TRAYS. SPECIFY SIZE & MAKE OF TRAY. PLEASE PROVIDE CADDY WITH SAMPLE TRAY.

BV-10 CONVEYOR IS DESIGNED TO TRANSPORT 20" X 20" RACKS, STACKED AND LOOSE DISHES, TRAYS, AND SIMILAR ITEMS GOING THROUGH THE DISHMACHINE



NOTES

- [] VERIFY ROUGH-IN SCHEDULE.
- EACH [] VERIFY ON THIS DRAWING MUST BE CONFIRMED. YOUR FABRICATION APPROVAL OF THIS DRAWING WILL INDICATE YOUR ACCEPTANCE AS SHOWN.
- CONVEYOR IS TO BE E.T.L. LISTED WITH LABEL AFFIXED.
- CONVEYOR WILL BE SHIPPED IN (5) PIECES AS INDICATED IN THE PLAN VIEW UNLESS OTHERWISE REQUESTED. [] VERIFY FOR ENTRANCE INTO BUILDING AND CONVEYOR AREA.
- CF-10 CONVEYOR IS DESIGNED TO TRANSPORT UP TO 16" WIDE FLAT BOTTOM TRAYS. SPECIFY SIZE & MAKE OF TRAY. PLEASE PROVIDE CADDY WITH A SAMPLE TRAY.
- BV-10 CONVEYOR IS DESIGNED TO TRANSPORT STACKED AND LOOSE DISHES, UP TO 16" WIDE TRAYS AND SIMILAR ITEMS GOING THROUGH THE DISHWASHING MACHINE.
- POWERED ROLLER-VEYOR IS DESIGNED TO TRANSPORT 20" X 20" RACKS.
- CF-10 CONTROL STATION INCLUDES CONVEYOR START/STOP SWITCH & VARIABLE SPEED CONTROL AND BELT WASHER ON/OFF SWITCH.
- BV-10 CONTROL STATION INCLUDES CONVEYOR START/STOP SWITCH & VARIABLE SPEED CONTROL AND BELT WASHER ON/OFF SWITCH.
- POWERED ROLLER CONTROL STATION INCLUDES CONVEYOR START/STOP SWITCH & VARIABLE SPEED CONTROL.
- BV-10 CONVEYOR IS CONTROLLED THROUGH A FOOT SWITCH SWITCH OPERATED BY "PRESSING" TO RUN AND "RELEASING" TO STOP.
- BELT WASHER OPERATES AUTOMATICALLY WHILE BELT IS RUNNING. BELT WASHER INCLUDES ON/OFF SWITCH.
- PROVIDE CADDY WITH MANUFACTURER'S NAME, MAKE, MODEL NUMBER AND DETAILED SHOP DRAWINGS OF DISHMACHINE.
- PROVIDE CADDY WITH MANUFACTURER'S NAME, MAKE, MODEL NUMBER AND DETAILED SHOP DRAWINGS OF PULPER.

ROUGH-IN SCHEDULE

NOTE: STUB UP FLOOR ROUGH-INS 4" A.F.F. ROUGH-INS EXTENDING FROM WALLS TO BE 10" A.F.F.

SYM	QTY	DESCRIPTION
A	3	1 1/2" I.P.S. WASTE
B	2	120V., 60HZ., 1PH., 3/4HP., 15AMPS.
C	2	1/2" I.P.S. HOT WATER
D	2	1/2" I.P.S. COLD WATER
E	1	1 1/2" I.P.S. DIFFUSER 2" DIA. HOLE BY CADDY DIFFUSER BY OTHERS
F	1	208V., 60HZ., 3PH., 1/2HP., 15AMPS. POWERED ROLLERS

REVISIONS

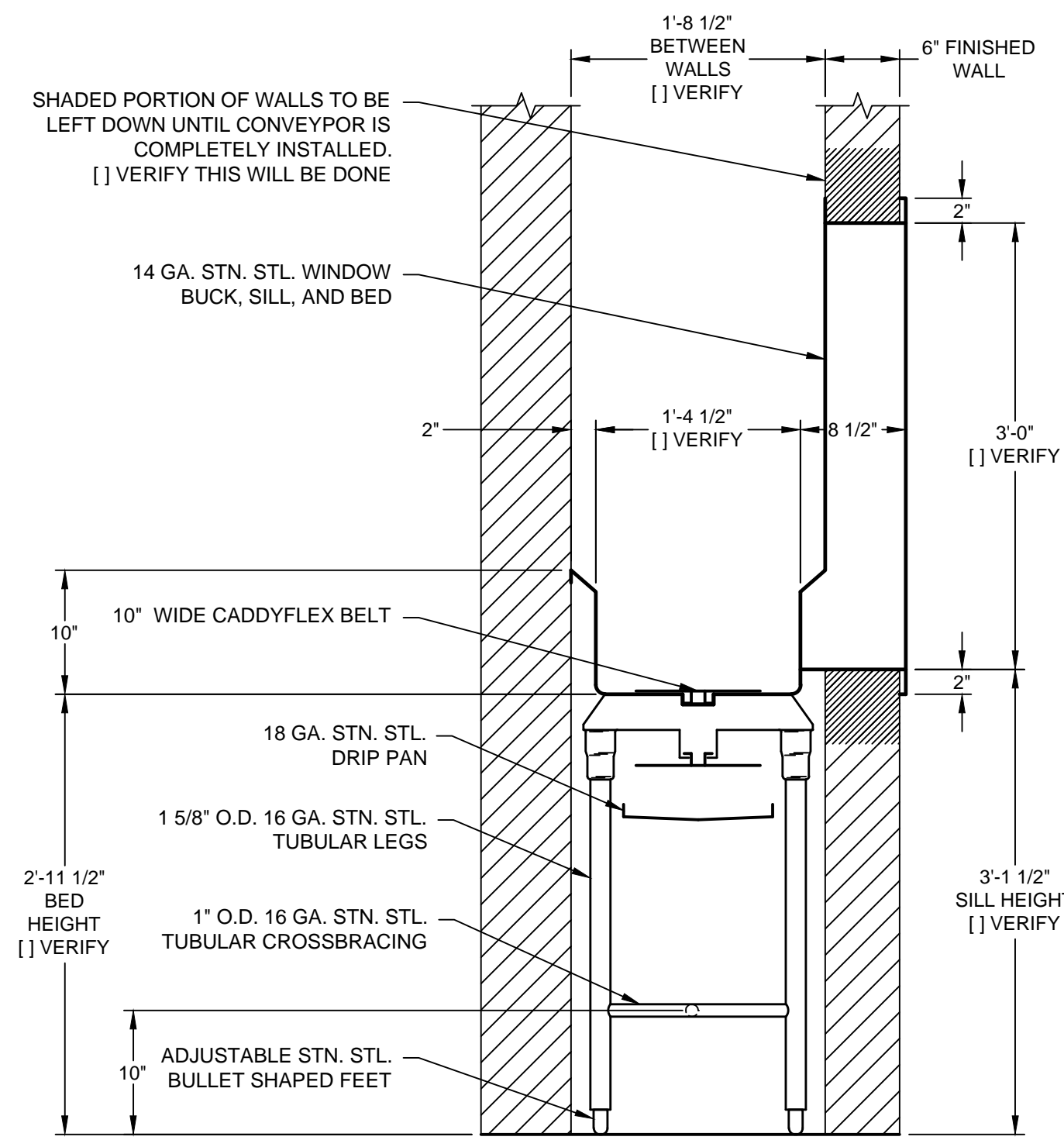
REV	DATE	BY	REMARKS
A	04/18/12	DME	REVISED PER WALL LAYOUT RECEIVED ON 04/18/12. ADDED WELDED FIELD JOINTS.
B	05/11/12	DME	CHANGED DISHMACHINE, SHORTENED CONVEYOR, AND EXTENDED TO WALL.
C	05/21/12	DME	MOVED DISHMACHINE 6" TO MEET CORNER OF CF-10.
D	06/06/12	DME	ADDED REQUIRED ACCESS DOORS / PANELS.
E	10/15/12	ECC	ORDER REC'D 10/15/12 - NOTES AND VERIFICATION REQUESTS ADDED

CADDY CORPORATION
509 Sharptown Road
Bridgeport, NJ 08014-0345
Tel: 856-467-4222
Internet: www.caddycorp.com
P.O. Box 345
Fax: 856-467-5511

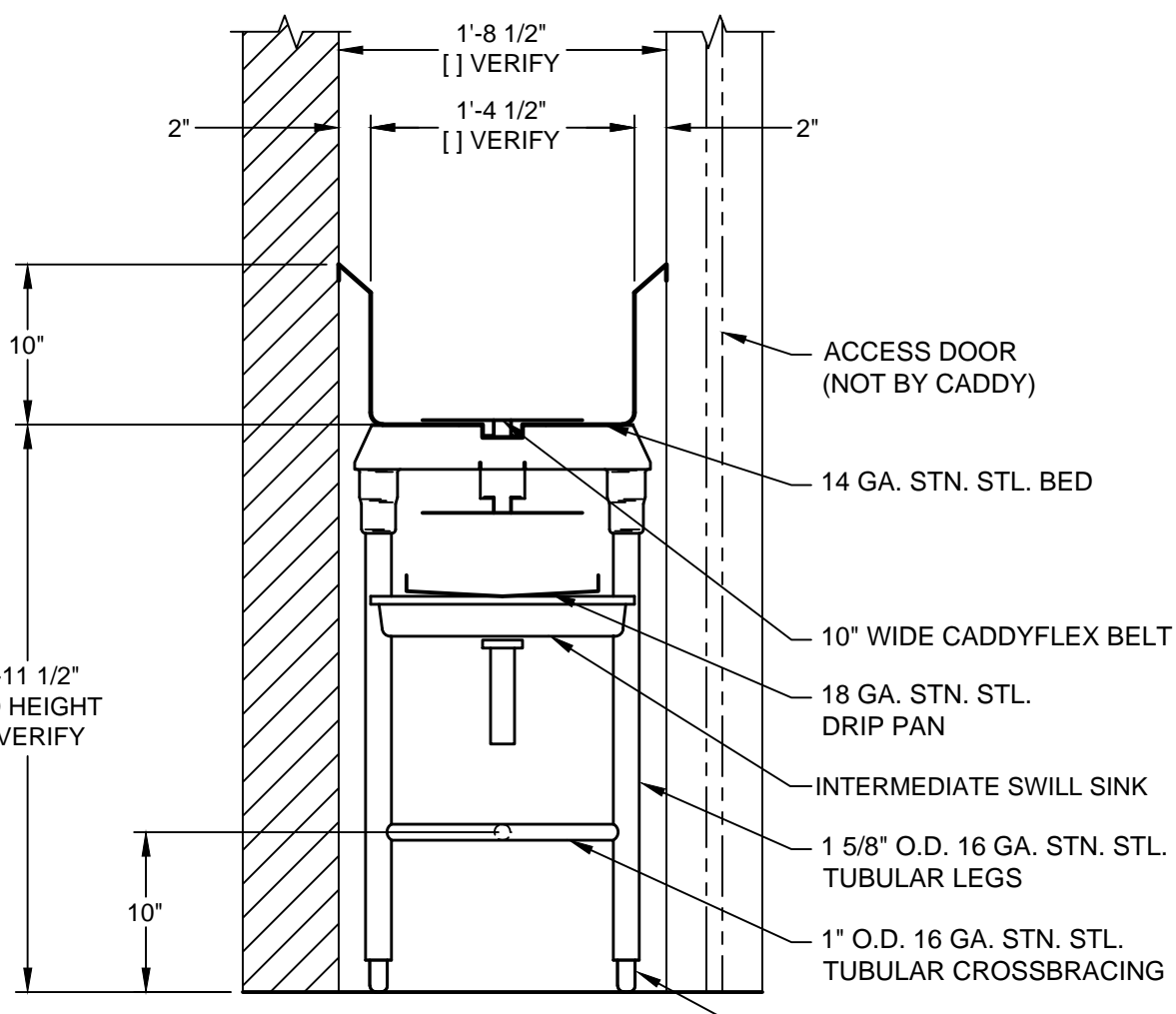
EQUIPMENT SCHEDULE

CF-10 SOILED TRAY CONVEYOR, BV-10 BUSSING-VEYOR, ALS-5030 POWERED ROLLER-VEYOR
CADDY NO. 10710-9 ITEM NO. 235
JOB: READING HOSPITAL LOC: READING, PA CUST: SINGER EQUIPMENT COMPANY CUST #: 03304717

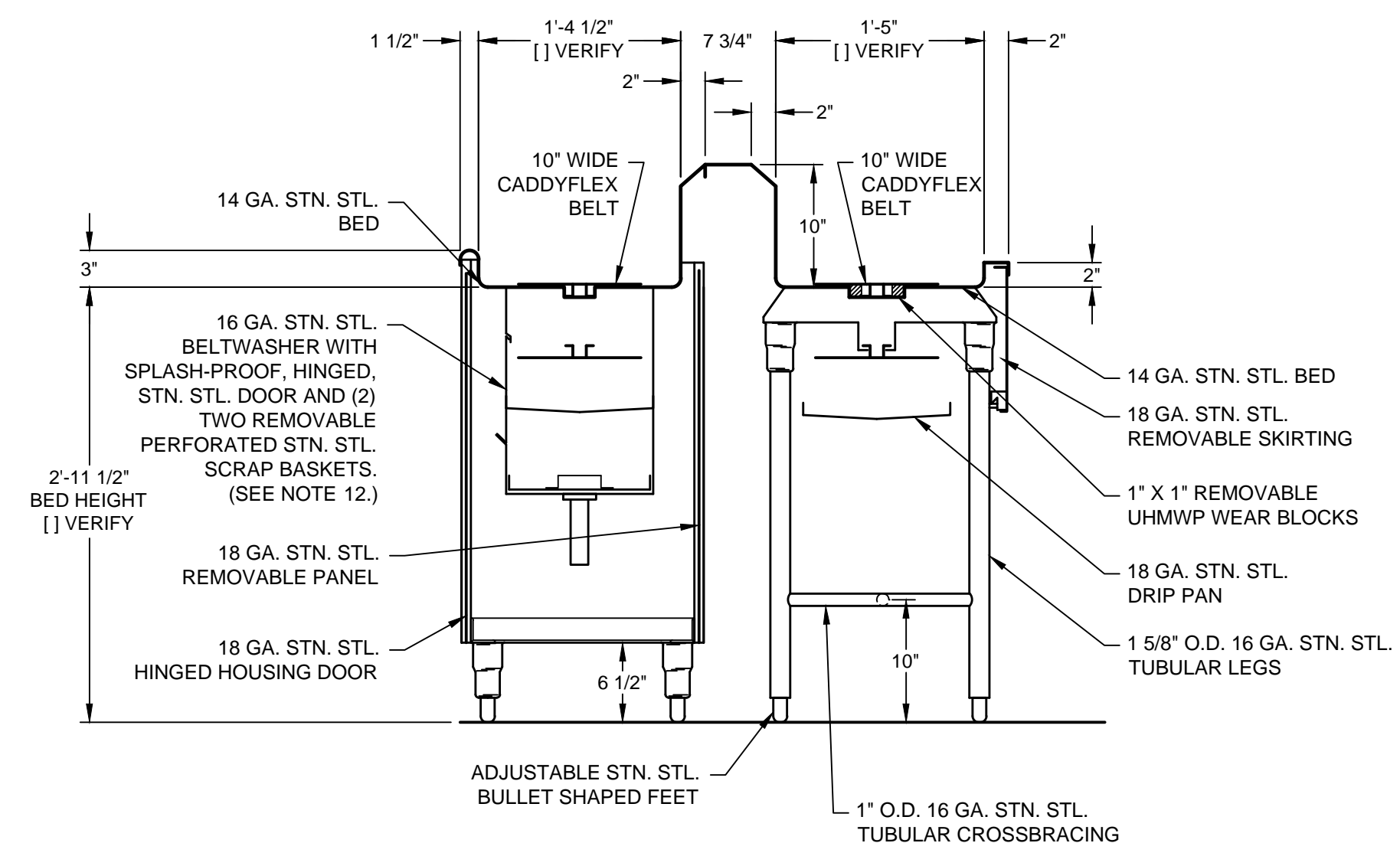
GENERAL CONTRACT CONDITIONS
ELECTRICAL WORK DONE BY CADDY CORPORATION IS EXECUTED IN COMPLIANCE WITH STANDARDS PUBLISHED BY THE UNDERWRITER'S LABORATORIES, INC. INSOFAR AS APPLICABLE, AND THE LATEST EDITION OF THE NATIONAL ELECTRICAL CODE (NEC). CADDY CORPORATION DOES NOT ACCEPT ANY RESPONSIBILITY FOR THE REQUIREMENTS OF ANY REGIONAL AND/OR LOCAL CODES THAT ADD OR DEVIATE FROM THE ACCEPTED STANDARDS OF THE ABOVE AGENCIES. ANY FIELD WORK RELATING TO THE MODIFICATION OF ELECTRIC OR PLUMBING SYSTEMS, TO MEET REGIONAL OR LOCAL CODE REQUIREMENTS IS TO BE DONE BY OTHERS AND WITHOUT BACK CHARGES TO CADDY CORPORATION UNLESS THESE CONDITIONS WERE PREVIOUSLY BROUGHT TO OUR ATTENTION AND ARE EXPRESSLY INCLUDED IN OUR WRITTEN QUOTATION.
ALL WIRING AND PLUMBING AT THE JOB SITE IS THE RESPONSIBILITY OF OTHERS. EQUIPMENT WILL BE CONSTRUCTED IN ACCORDANCE WITH OUR DRAWING(S) WHICH MUST BE APPROVED PRIOR TO FABRICATION. ANY SUBSEQUENT CHANGES REQUIRED MUST BE SUBMITTED TO US IN WRITING AND ACKNOWLEDGED ON OUR STANDARD FORM.



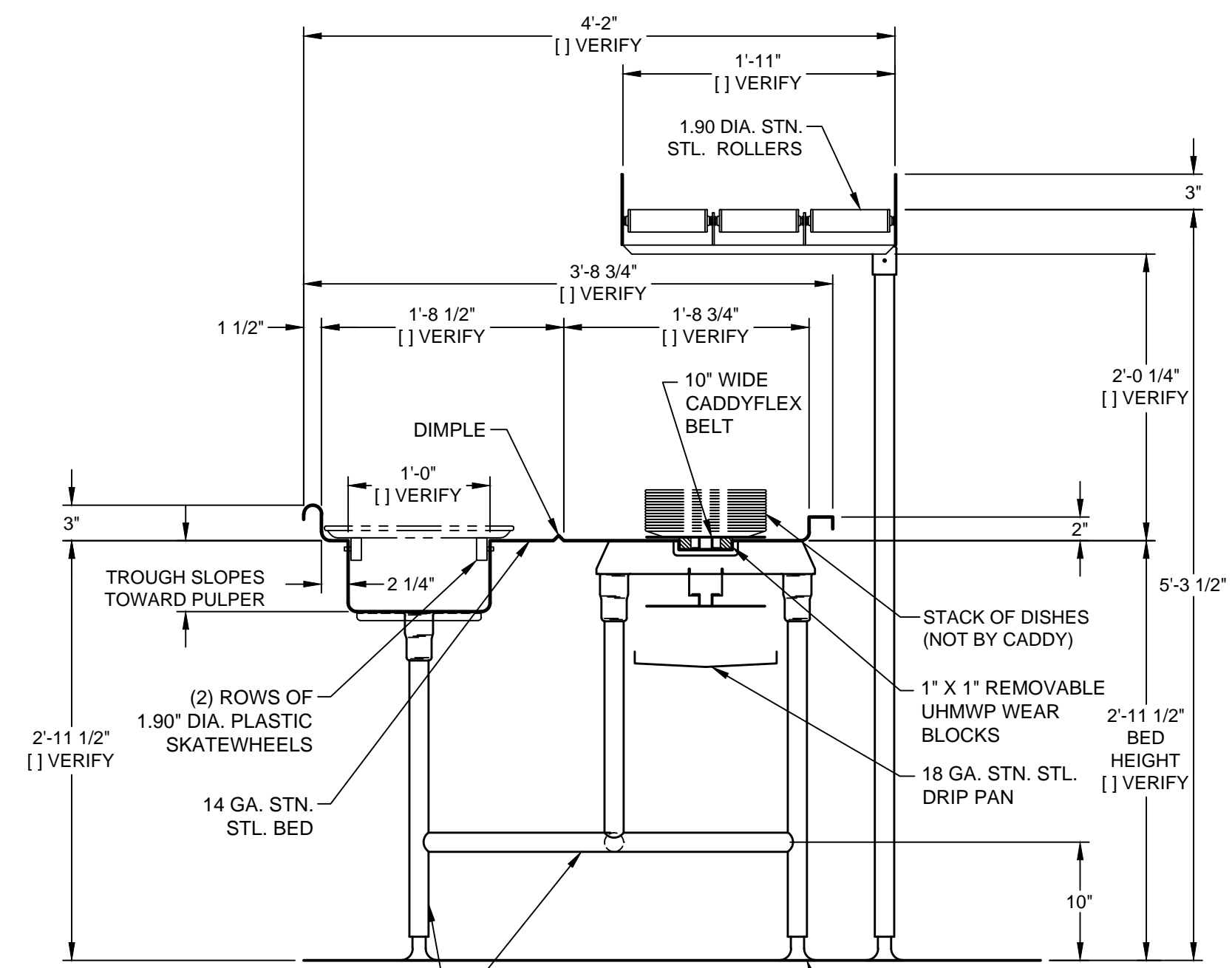
SECTION U-U
SCALE: 1" = 1'-0"



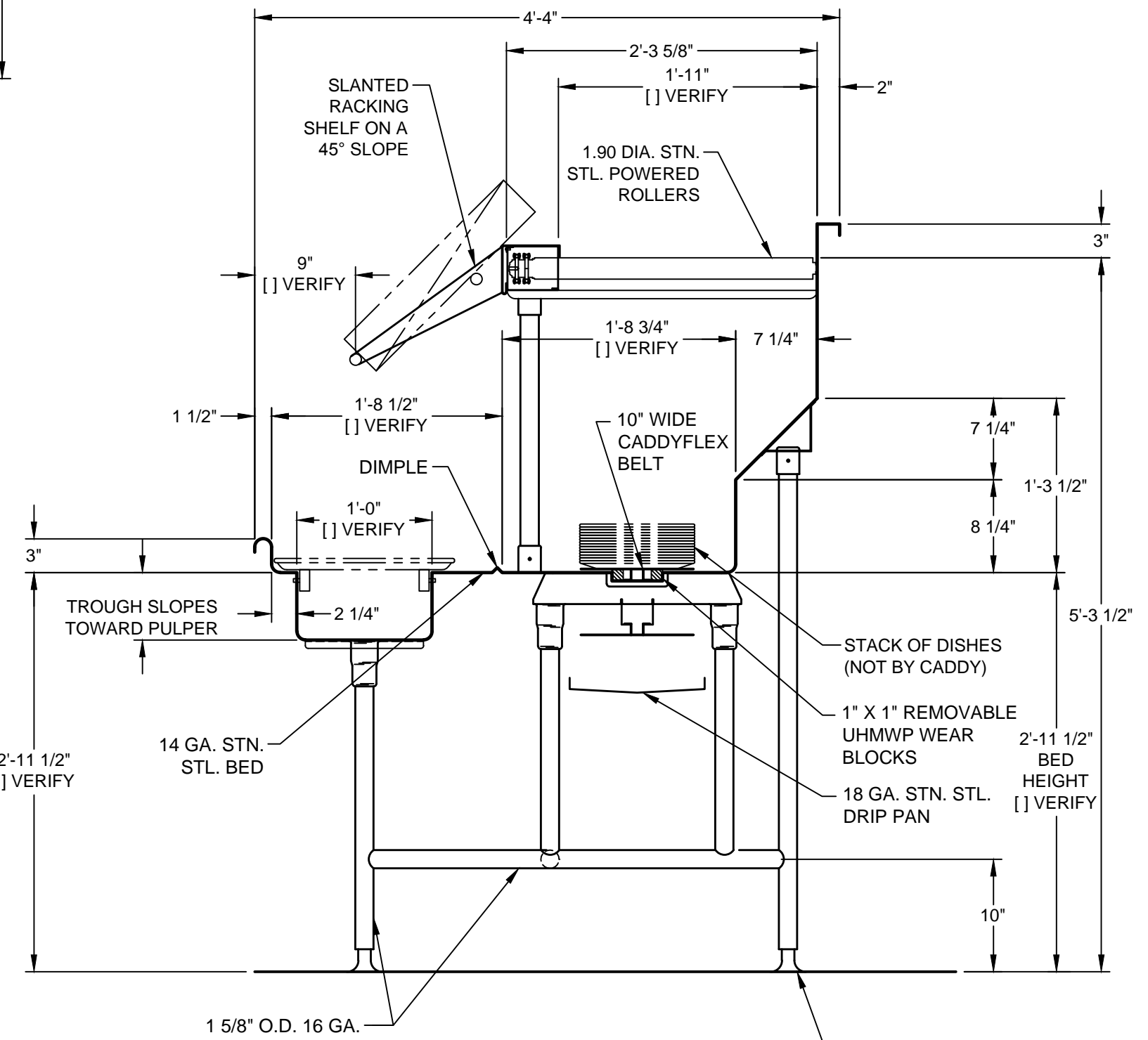
SECTION V-V
SCALE: 1" = 1'-0"



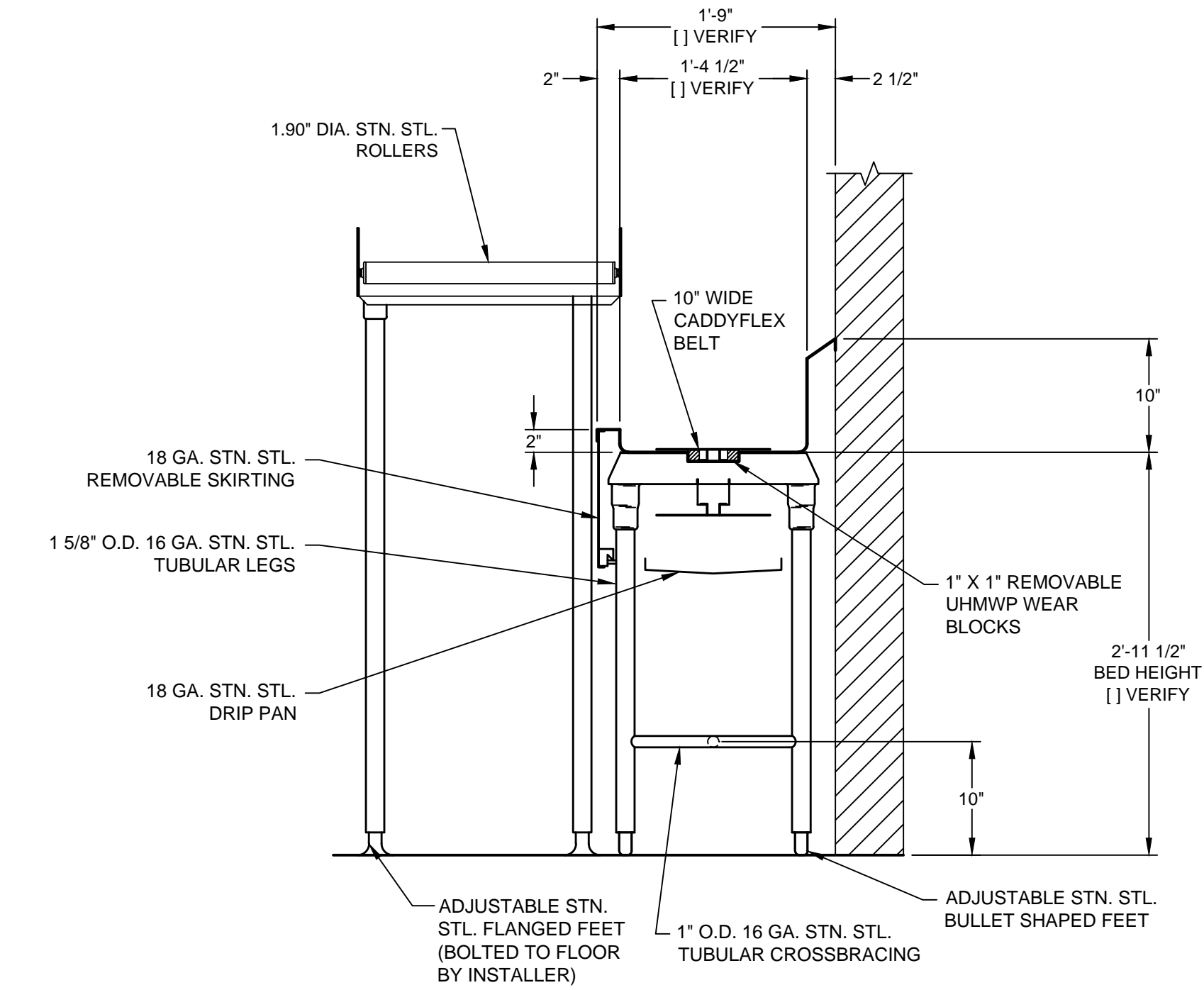
SECTION W-W
SCALE: 1" = 1'-0"



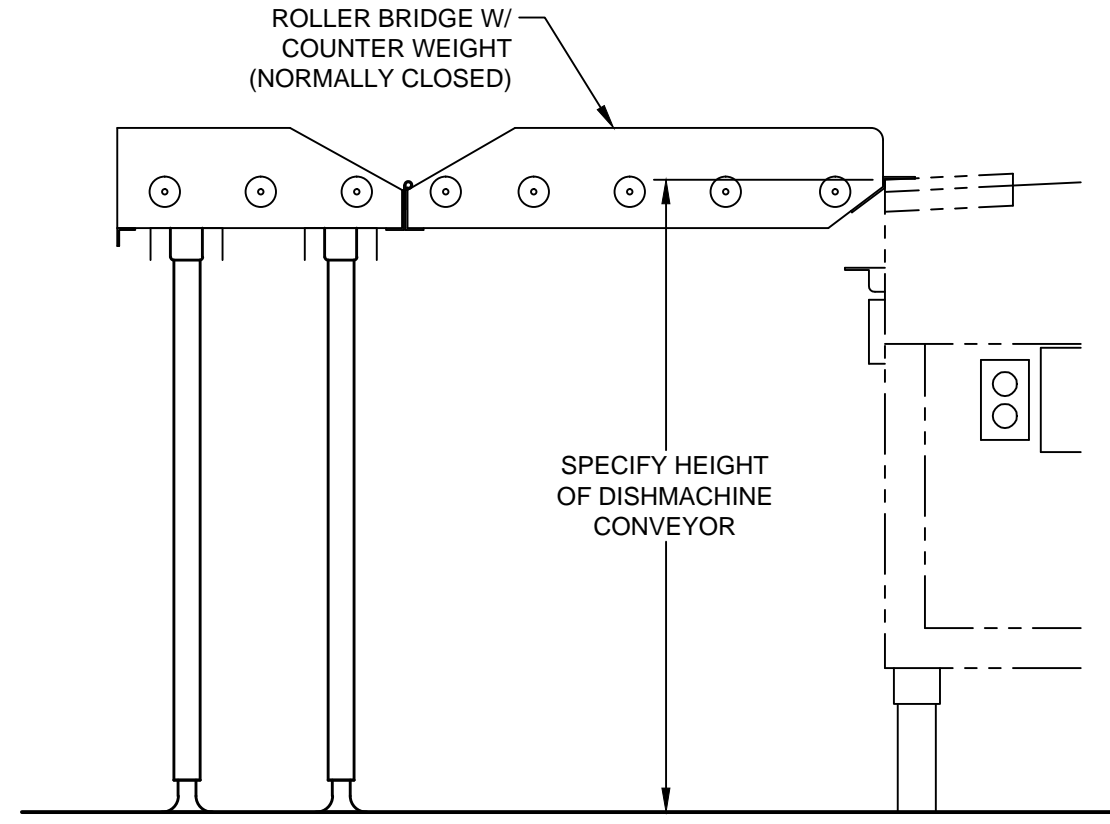
SECTION X-X
SCALE: 1" = 1'-0"



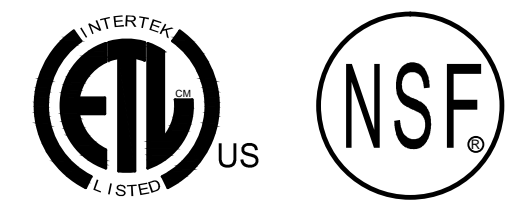
SECTION Y-Y
SCALE: 1" = 1'-0"



SECTION Z-Z
SCALE: 1" = 1'-0"



DETAIL "A"
SCALE: 1" = 1'-0"



GENERAL CONTRACT CONDITIONS
ELECTRICAL WORK DONE BY CADDY CORPORATION IS EXECUTED IN COMPLIANCE WITH STANDARDS PUBLISHED BY THE UNDERWRITER'S LABORATORIES, INC. INsofar AS APPLICABLE, AND THE LATEST EDITION OF THE NATIONAL ELECTRICAL CODE (NEC). CADDY CORPORATION DOES NOT ACCEPT ANY RESPONSIBILITY FOR THE REQUIREMENTS OF ANY REGIONAL AND/OR LOCAL CODES THAT ADD OR DEVIATE FROM THE ACCEPTED STANDARDS OF THE ABOVE AGENCIES. ANY FIELD WORK RELATING TO THE MODIFICATION OF ELECTRIC OR PLUMBING SYSTEMS, TO MEET REGIONAL OR LOCAL CODE REQUIREMENTS IS TO BE DONE BY OTHERS AND WITHOUT BACK CHARGES TO CADDY CORPORATION, UNLESS THESE CONDITIONS WERE PREVIOUSLY BROUGHT TO OUR ATTENTION AND ARE EXPRESSLY INCLUDED IN OUR WRITTEN QUOTATION.
ALL WIRING AND PLUMBING AT THE JOB SITE IS THE RESPONSIBILITY OF OTHERS. EQUIPMENT WILL BE CONSTRUCTED IN ACCORDANCE WITH OUR DRAWING(S) WHICH MUST BE APPROVED PRIOR TO FABRICATION. ANY SUBSEQUENT CHANGES REQUIRED MUST BE SUBMITTED TO US IN WRITING AND ACKNOWLEDGED ON OUR STANDARD FORM.

REVISIONS			
REV	DATE	BY	REMARKS
A	04/18/12	DME	REVISED PER WALL LAYOUT RECEIVED ON 04/18/12. ADDED WELDED FIELD JOINTS.
B	05/11/12	DME	CHANGED DISHMACHINE, SHORTENED CONVEYOR, AND EXTENDED TO WALL.
C	05/21/12	DME	MOVED DISHMACHINE 6" TO MEET CORNER OF CF-10.
D	06/06/12	DME	ADDED REQUIRED ACCESS DOORS / PANELS.
E	10/15/12	ECG	ORDER REC'D 10/4/12 - NOTES AND VERIFICATION REQUESTS ADDED

CADDY CORPORATION 509 Sharptown Road Bridgeport, NJ 08014-0345 Tel: 856-467-4222 internet: www.caddycorp.com		P.O. Box 345 Fax: 856-467-5511
EQUIPMENT SCHEDULE		
CF-10 SOILED TRAY CONVEYOR, BV-10 BUSSING-VEYOR, ALS-5030 POWERED ROLLER-VEYOR		
CADDY NO.	10710-9	ITEM NO. 235
JOB: READING HOSPITAL LOC: READING, PA CUST: SINGER EQUIPMENT COMPANY CUST #: 03304717		
DATE	02/27/12	SCALE AS NOTED
DR BY	DME	APP'D BY <i>BAN</i>
DWG# D-1-10728		SHT 2 OF 2