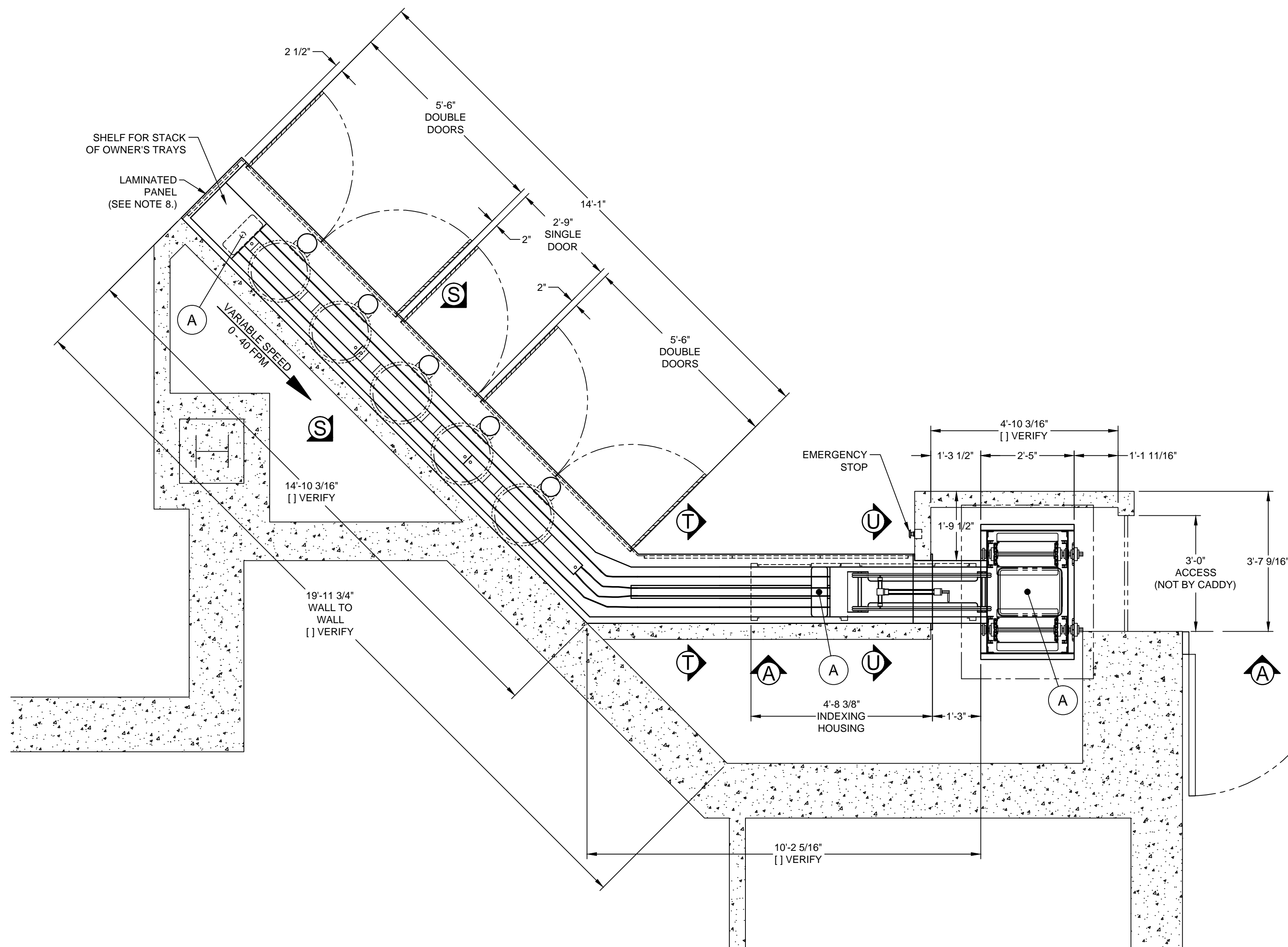
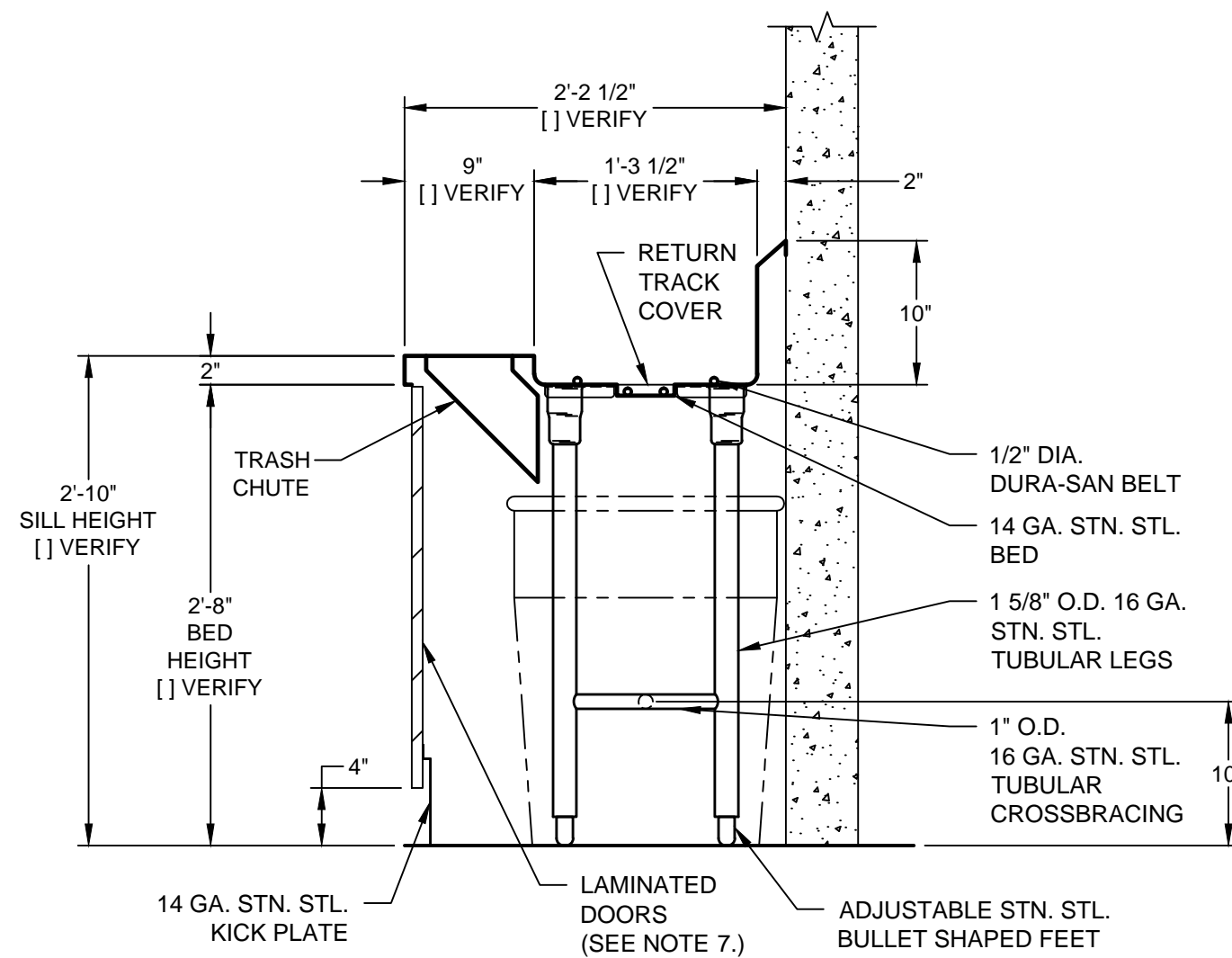


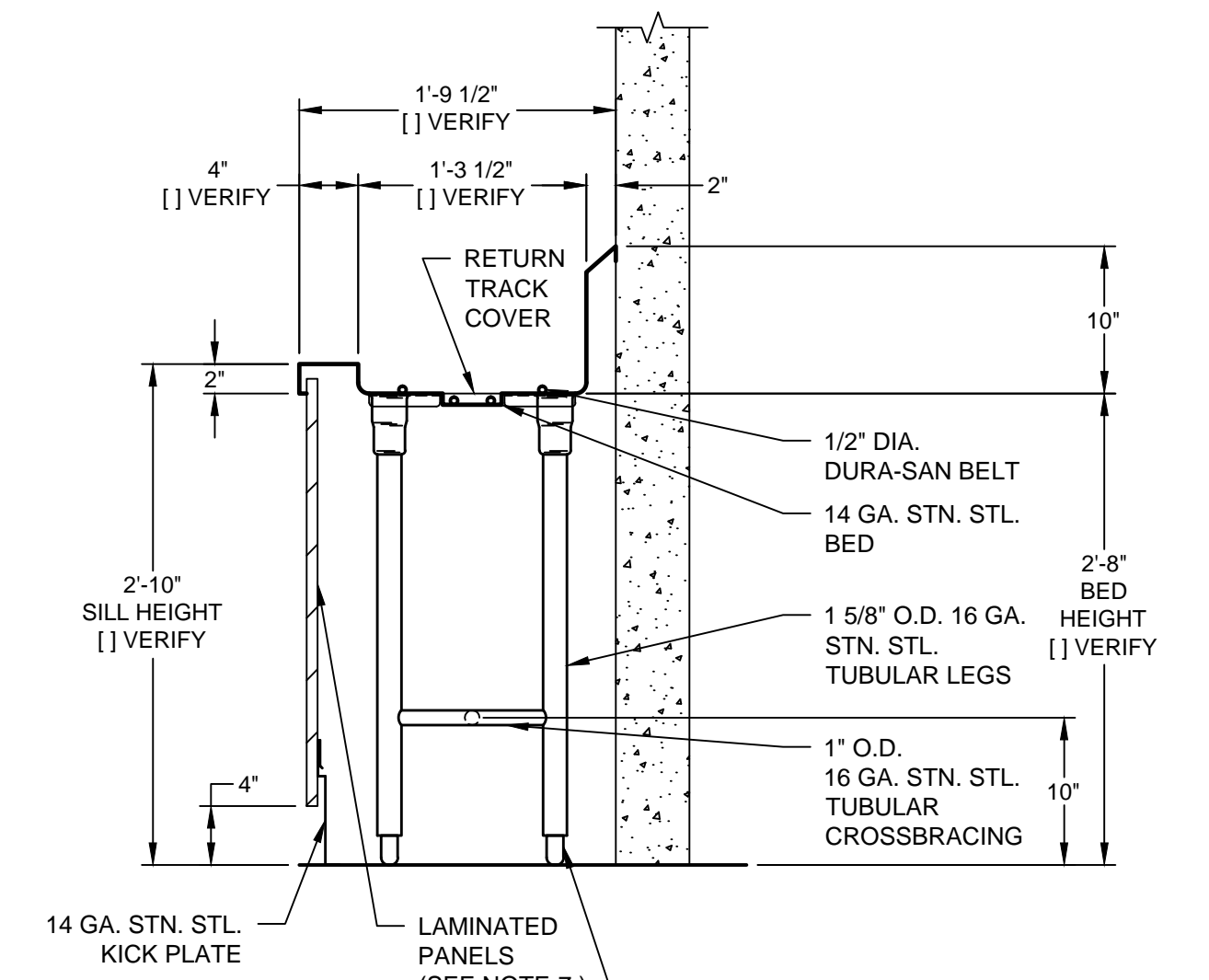
21-C CONVEYOR IS DESIGNED TO TRANSPORT 14" X 18" OR 15" X 20" FLAT BOTTOM TRAYS. CADDY MUST BE SUPPLIED WITH A SAMPLE TRAY FOR FABRICATION TO BEGIN..



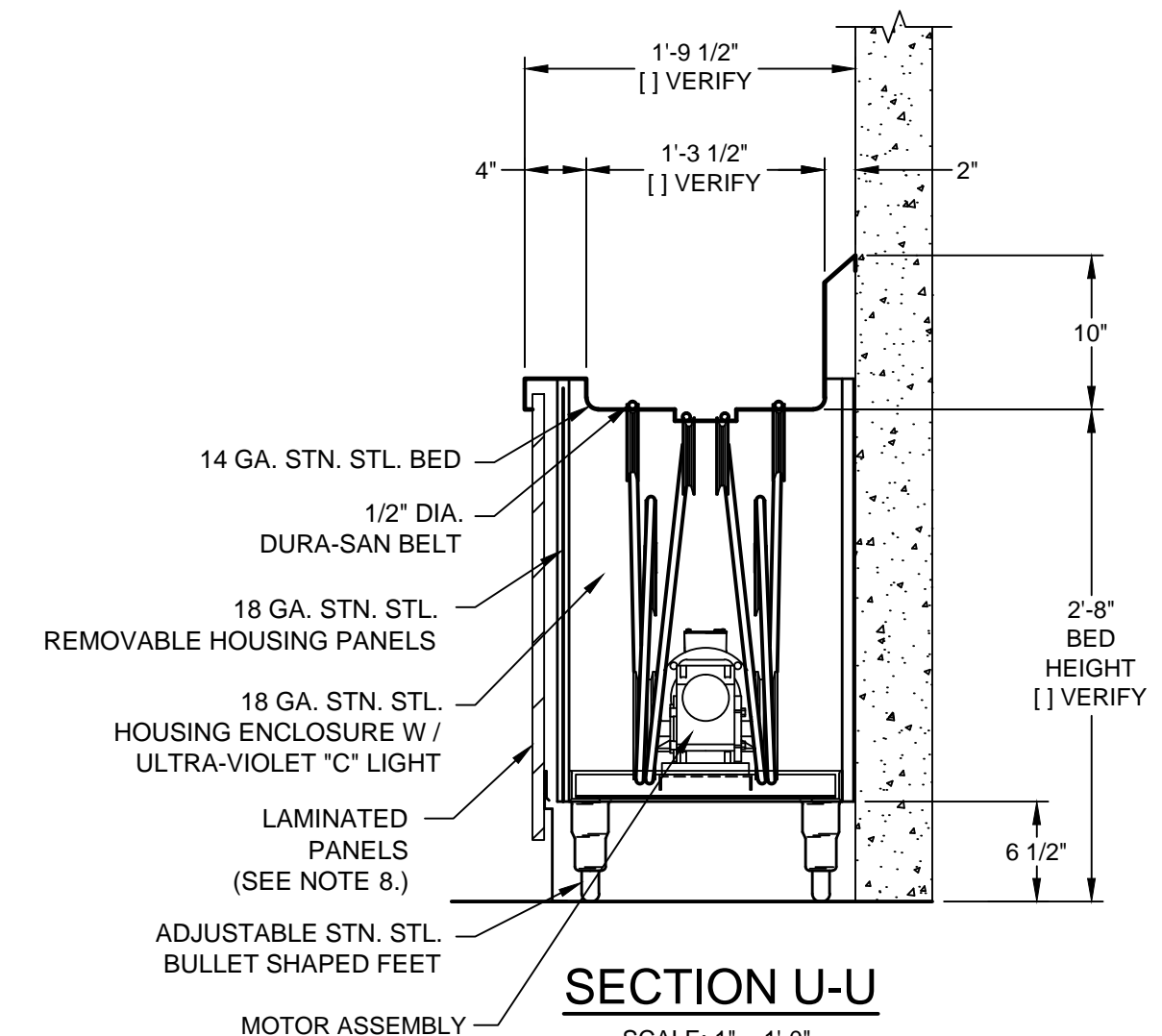
**TRAY DROP
PLAN VIEW**
SCALE: 1/2" = 1'-0"



SECTION S-S
SCALE: 1" = 1'-0"



SECTION T-T
SCALE: 1" = 1'-0"



SECTION U-U
SCALE: 1" = 1'-0"

NOTES	
1. CONVEYORS ARE TO BE E.T.L. LISTED WITH LABELS AFFIXED.	10. LBS. (HOOK AND HOOK INSTALLATION NOT BY CADDY). LED STRIP LIGHTING TO BE SUPPLIED AND MOUNTED BY CADDY. FINAL CONNECTION TO SWITCH BY OTHERS. ALL LIGHTING INSIDE SHAFTS TO BE PROVIDED AND INSTALLED BY OTHERS.
2. SPECIFY LOCATION OF ALL FIELD JOINTS IN PLAN VIEW. PLEASE ALLOW FOR SUFFICIENT ACCESS INTO BUILDING AND CONVEYOR AREA.	11. SPECIFY HEIGHT OF THE TALLEST ITEM TO BE SCRAPPED TO ENSURE ADEQUATE CLEARANCE WHEN TRANSPORTED ON 21-C AND ROLLER CONVEYOR UNDER STA-R-40 TRAY CARRIERS.
3. CVV VERTICAL CONVEYORS & 21-C CONVEYORS ARE DESIGNED TO TRANSPORT 14" X 18" OR 15" X 20" RECTANGULAR FLAT BOTTOM TRAYS. SPECIFY SIZE & MAKE OF TRAY. PLEASE PROVIDE CADDY WITH A SAMPLE TRAY.	
4. DROP-IN ROLLERS ARE DESIGNED TO TRANSPORT 20" X 20" RACKS AND STACKS OF TRAYS GOING THROUGH THE DISHMACHINE.	
5. STA-R-40 ACCUMULATOR IS DESIGNED TO ACCUMULATE 14" X 18" TRAYS.	
6. CONVEYOR SYSTEM CONTROL PANEL INCLUDES CONVEYOR START/STOP SWITCH & VARIABLE SPEED CONTROL AND STA-R JAM INDICATOR LIGHT.	
7. PROVIDE CADDY WITH MANUFACTURER'S NAME, MAKE, MODEL NUMBER AND DETAILED SHOP DRAWINGS OF DISPOSERS. PLEASE SHIP DISPOSER RING TO CADDY FOR WELDING TO SINK.	
8. LAMINATED PANELS & DOORS TO CONSIST OF 3/4" THICK PLYWOOD COVERED WITH 1/16" PLASTIC LAMINATED ON FRONT AND ALL FOUR SIDES AND WATERPROOF BACKING ON REAR. PLEASE SPECIFY MANUFACTURER'S MAKE, MODEL NUMBER, COLOR AND DIRECTION OF GRAIN IF ANY.	
9. PROVIDE A HOOK OR MEANS OF SUPPORT CENTERED ABOVE SHAFT IN 1ST FLOOR CEILING. HOOK MUST BE ABLE TO SUPPORT MINIMUM LOAD OF 3000	

ROUGH-IN SCHEDULE		
NOTE: STUB UP FLOOR ROUGH-INS 4" A.F.F. ROUGH-INS EXTENDING FROM WALLS TO BE 10" A.F.F.		
SYM	QTY	DESCRIPTION
A	11	1 1/2" I.P.S. WASTE
B	1	120/208V., 60HZ., 3PH., 30 AMPS.
C	2	1 1/2" I.P.S. DIFFUSER 2" DIA. HOLE BY CADDY DIFFUSER BY OTHERS
D	4	3/4" I.P.S. GUSHERHEAD 1 5/16" DIA. HOLE BY CADDY DIFFUSER BY OTHERS
E	1	120V., 60HZ., 1PH., 2.5AMPS CONNECTED LOAD FOR SIGHT & SOUND Baffle LIGHTS

REVISIONS			
REV	DATE	BY	REMARKS
A.B.C. D.E	--	--	SEE SHT 6 OF 6 FOR ALL REVISION DETAILS
F	02/05/14	DME	CHANGED ACCUMULATOR TOTAL CAPACITY TO 56 TRAYS. REMOVED ENCLOSURE. ADJUSTED WALLS
G	02/25/14	DME	MOVED ANNUNCIATOR PANEL FARTHER AWAY FROM THE ELEVATOR SHAFT.
H	03/06/14	DME	CHANGED TRAY DROP HEIGHT AND ADDED COILING DOOR
I	03/07/14	DME	CHANGED CRAWL SPACE 21-C LAYOUT AND ADDED SECTION W-W. REVISED SECTIONS X-X & Y-Y PER DISCUSSIONS WITH CRISTINE & KATJA.
J	03/10/14	DME	REVISED CRAWL SPACE 21-C LAYOUT PER JOHN TANN'S FIELD DIMENSIONS.
K	03/27/14	DME	REVISED CRAWL SPACE 21-C LAYOUT. MOVED "ANGLED" SECTION 2-0" TO LEFT PER JE DUNK.

CADDY CORPORATION
509 Sharpstown Road, Bridgeport, NJ 08014-0345
Tel: 856-467-4222 Fax: 856-467-5511
Internet: www.caddycorp.com

EQUIPMENT SCHEDULE

(2) CVV-VERTICAL CONVEYORS
(3) 21-C SOILED TRAY CONVEYORS

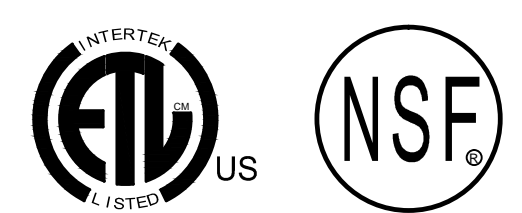
CADDY NO. 11550-1 ITEM NO. 1

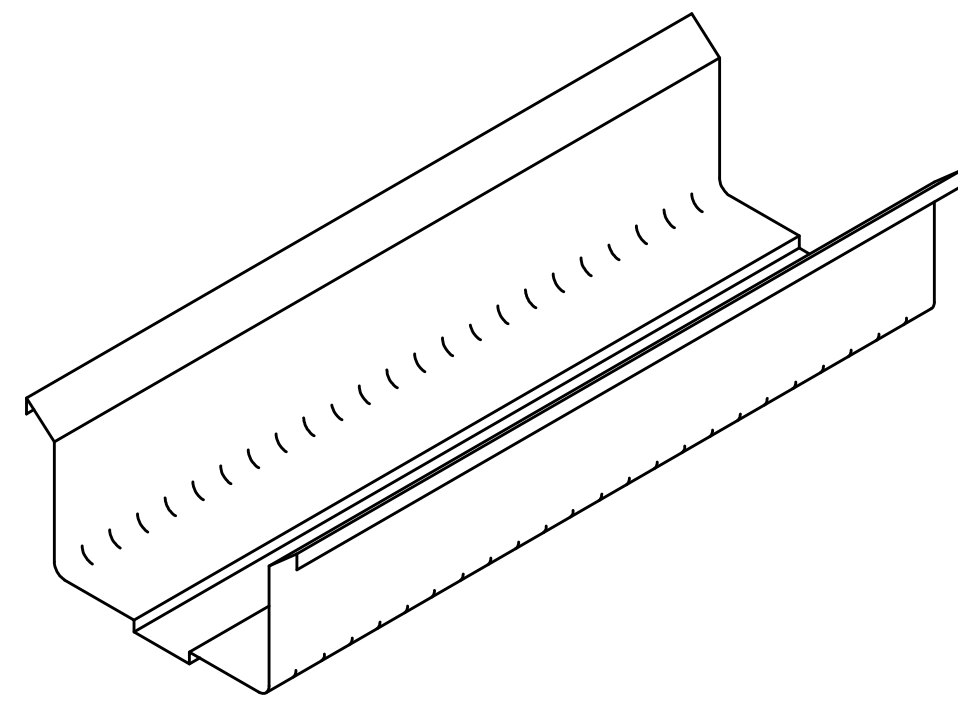
JOB: SAN ANTONIO MILITARY MEDICAL CTR.
LOC: SAN ANTONIO, TX
CUST:
CUST #:

DATE: 01/18/13 SCALE: AS NOTED
DR BY: DME APP'D BY: *BPN*

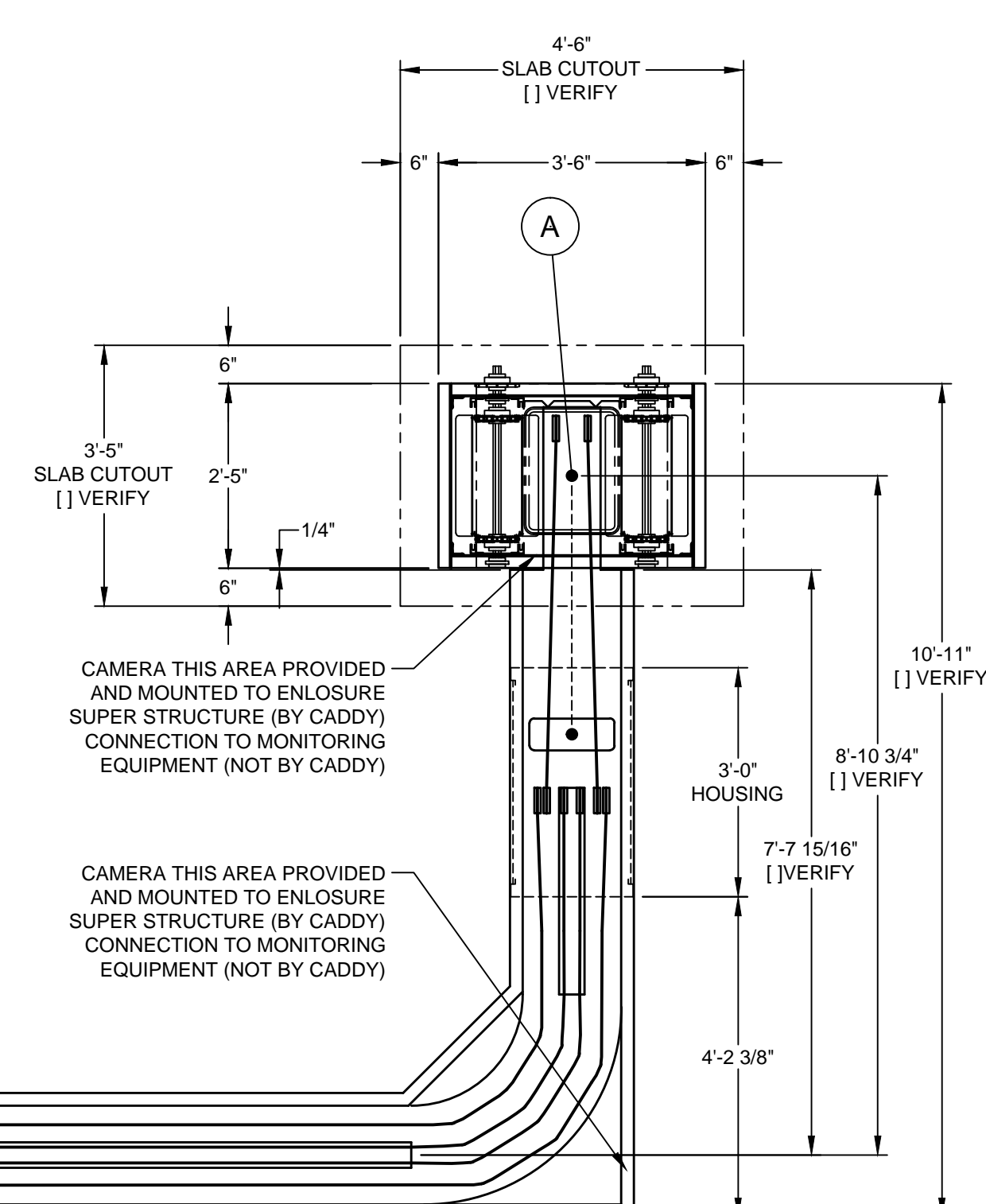
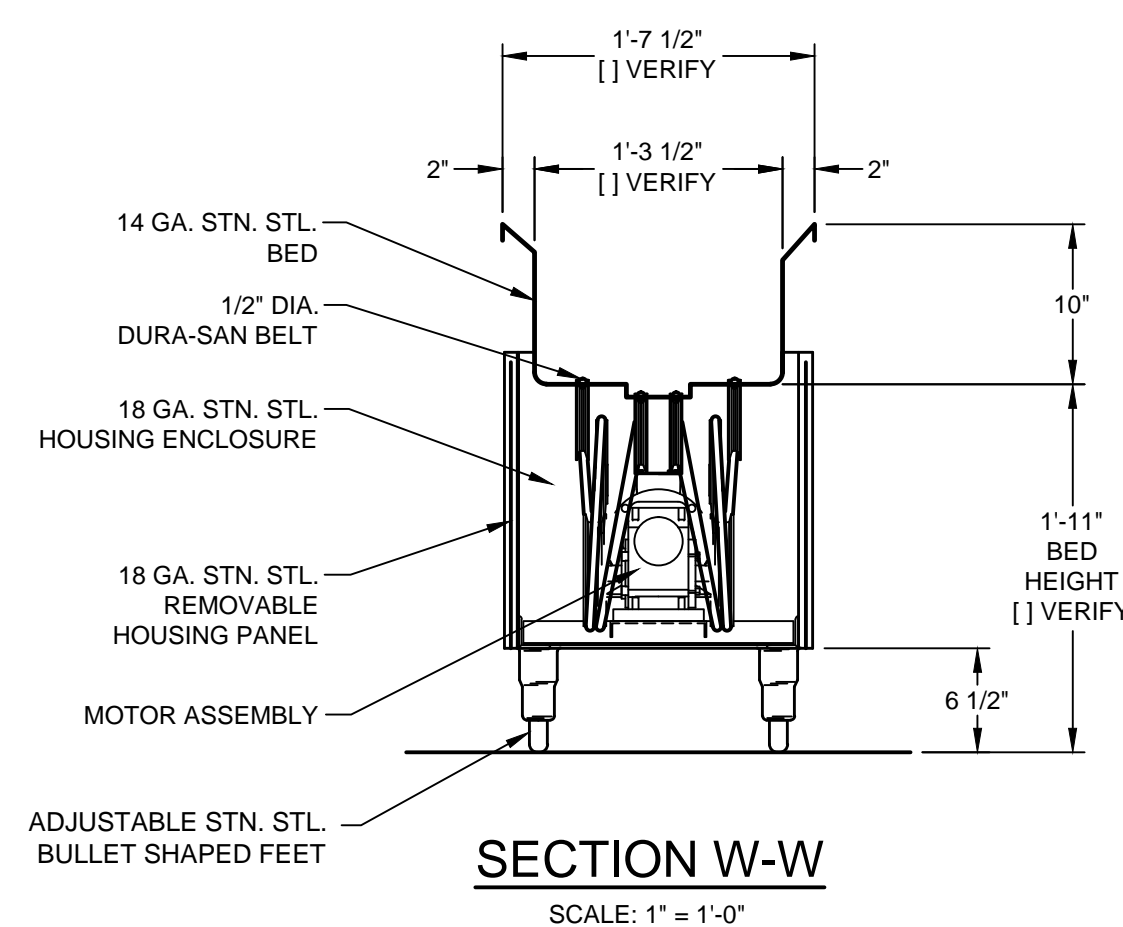
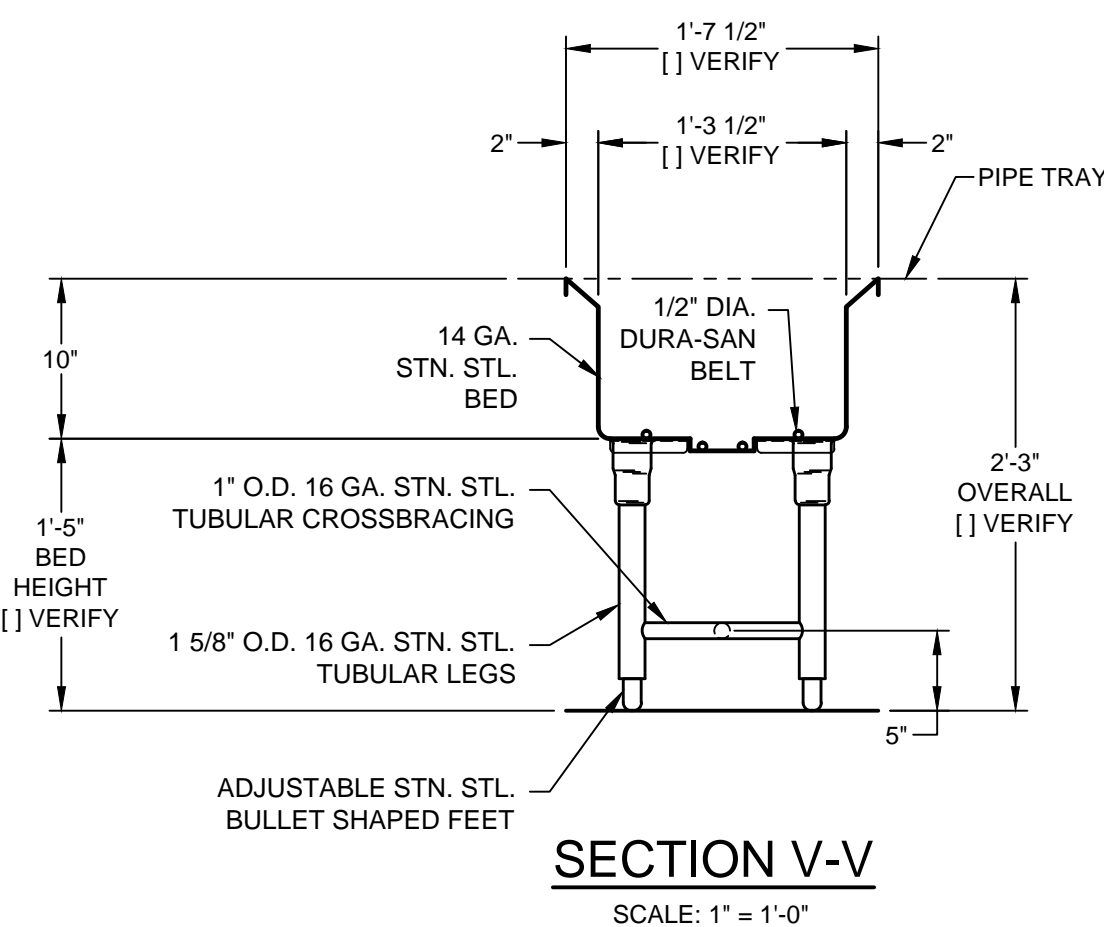
DWG# D-1-18999 SHT 1 OF 6

GENERAL CONTRACT CONDITIONS
ELECTRICAL WORK DONE BY CADDY CORPORATION IS EXECUTED IN COMPLIANCE WITH STANDARDS PUBLISHED BY THE UNDERWRITERS LABORATORIES, INC. INsofar AS APPLICABLE, AND THE LATEST EDITION OF THE NATIONAL ELECTRICAL CODE (NEC). CADDY CORPORATION DOES NOT ACCEPT ANY RESPONSIBILITY FOR THE REQUIREMENTS OF ANY REGIONAL AND/OR LOCAL CODES THAT ADD OR DEVIATE FROM THE ACCEPTED STANDARDS OF THE ABOVE AGENCIES. ANY FIELD WORK RELATING TO THE MODIFICATION OF ELECTRIC OR PLUMBING SYSTEMS, TO MEET REGIONAL OR LOCAL CODE REQUIREMENTS IS TO BE DONE BY OTHERS AND WITHOUT BACK CHARGES TO CADDY CORPORATION. UNLESS THESE CONDITIONS WERE PREVIOUSLY BROUGHT TO OUR ATTENTION AND ARE EXPRESSLY INCLUDED IN OUR WRITTEN QUOTATION.
ALL WIRING AND PLUMBING AT THE JOB SITE IS THE RESPONSIBILITY OF OTHERS. EQUIPMENT WILL BE CONSTRUCTED IN ACCORDANCE WITH OUR DRAWING(S) WHICH MUST BE APPROVED PRIOR TO FABRICATION. ANY SUBSEQUENT CHANGES REQUIRED MUST BE SUBMITTED TO US IN WRITING AND ACKNOWLEDGED ON OUR STANDARD FORM.





CRAWL SPACE ISOMETRIC VIEW
SCALE: 1" = 1'-0"



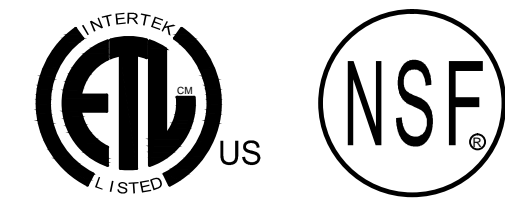
TRAY DROP PLAN VIEW
SCALE: 1/2" = 1'-0"

21-C CONVEYOR IS DESIGNED TO TRANSPORT 14" X 18" OR 15" X 20" FLAT BOTTOM TRAYS. CADDY MUST BE SUPPLIED WITH A SAMPLE TRAY FOR FABRICATION TO BEGIN..

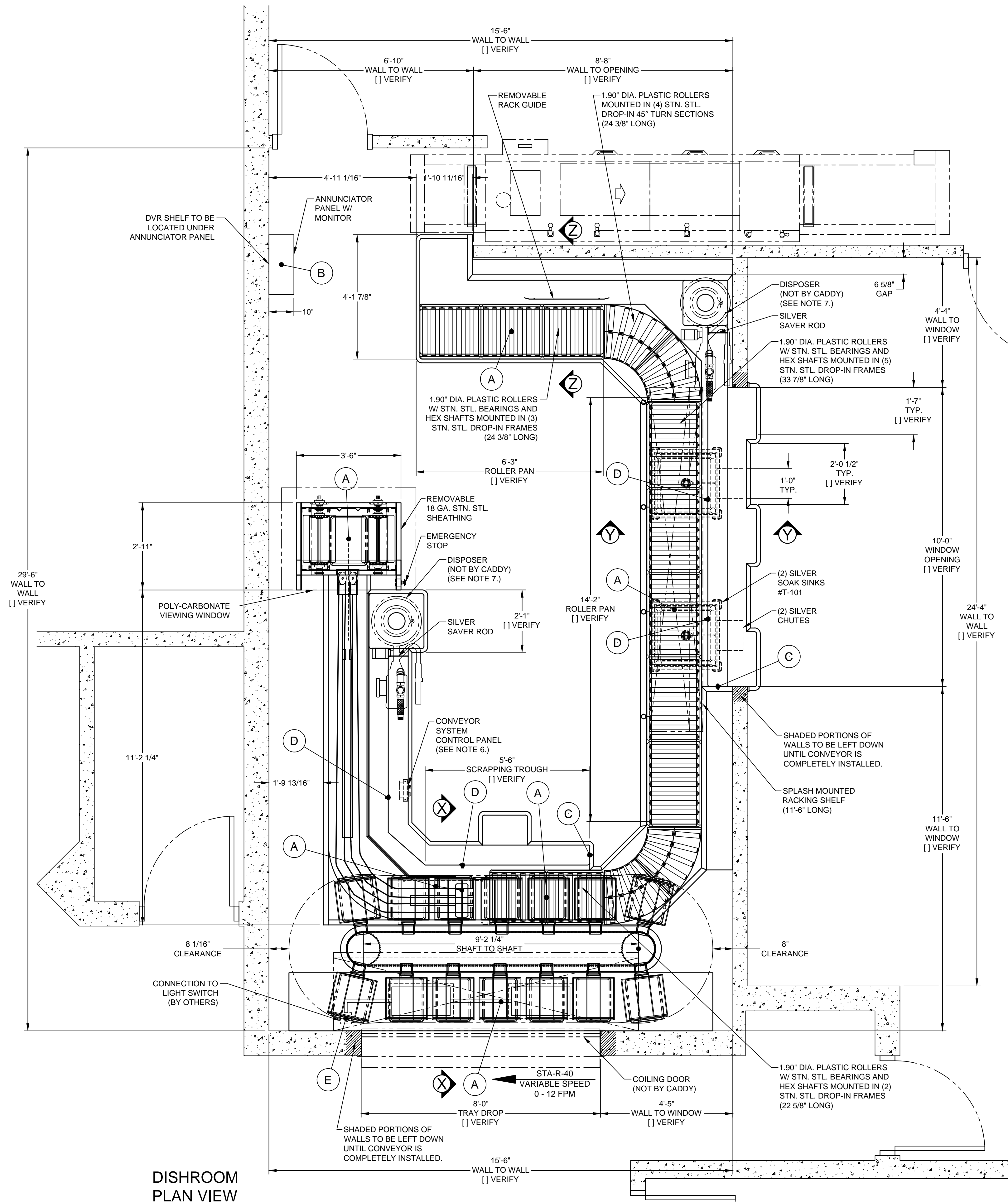
REVISIONS			
REV	DATE	BY	REMARKS
A.B.C.D.E	--	--	SEE SHT 6 OF 6 FOR ALL REVISION DETAILS
F	02/05/14	DME	CHANGED ACCUMULATOR TOTAL CAPACITY TO 56 TRAYS. REMOVED ENCLOSURE. ADJUSTED WALLS
G	02/25/14	DME	MOVED ANNUNCIATOR PANEL FARTHER AWAY FROM THE ELEVATOR SHAFT.
H	03/06/14	DME	CHANGED TRAY DROP HEIGHT AND ADDED COILING DOOR
I	03/07/14	DME	CHANGED CRAWL SPACE 21-C LAYOUT AND ADDED SECTION W-W. REVISED SECTIONS X-X & Y-Y PER DISCUSSIONS WITH CRISTINE & KATJA.
J	03/10/14	DME	REVISED CRAWL SPACE 21-C LAYOUT PER JOHN TANN'S FIELD DIMENSIONS.
K	03/27/14	DME	REVISED CRAWL SPACE 21-C LAYOUT. MOVED 'ANGLED' SECTION 2'-0" TO LEFT PER JE DUNK.

509 Shertown Road Bridgeport, NJ 08014-0345 Tel: 856-467-4222 internet: www.caddycorp.com	
EQUIPMENT SCHEDULE	
(2) CVV-VERTICAL CONVEYORS (3) 21-C SOILED TRAY CONVEYORS	
CADDY NO. 11550-1	ITEM NO. 1
JOB: SAN ANTONIO MILITARY MEDICAL CTR. LOC: SAN ANTONIO, TX CUST: CUST #:	

GENERAL CONTRACT CONDITIONS
ELECTRICAL WORK DONE BY CADDY CORPORATION IS EXECUTED IN COMPLIANCE WITH STANDARDS PUBLISHED BY THE UNDERWRITERS LABORATORIES, INC. INsofar AS APPLICABLE, AND THE LATEST EDITION OF THE NATIONAL ELECTRICAL CODE (NEC). CADDY CORPORATION DOES NOT ACCEPT ANY RESPONSIBILITY FOR THE REQUIREMENTS OF ANY REGIONAL AND/OR LOCAL CODES THAT ADD OR DEVIATE FROM THE ACCEPTED STANDARDS OF THE ABOVE AGENCIES. ANY FIELD WORK RELATING TO THE MODIFICATION OF ELECTRIC OR PLUMBING SYSTEMS, TO MEET REGIONAL OR LOCAL CODE REQUIREMENTS IS TO BE DONE BY OTHERS AND WITHOUT BACK CHARGES TO CADDY CORPORATION. UNLESS THESE CONDITIONS WERE PREVIOUSLY BROUGHT TO OUR ATTENTION AND ARE EXPRESSLY INCLUDED IN OUR WRITTEN QUOTATION.
ALL WIRING AND PLUMBING AT THE JOB SITE IS THE RESPONSIBILITY OF OTHERS. EQUIPMENT WILL BE CONSTRUCTED IN ACCORDANCE WITH OUR DRAWING(S) WHICH MUST BE APPROVED PRIOR TO FABRICATION. ANY SUBSEQUENT CHANGES REQUIRED MUST BE SUBMITTED TO US IN WRITING AND ACKNOWLEDGED ON OUR STANDARD FORM.



GENERAL CONTRACT CONDITIONS
 ELECTRICAL WORK DONE BY CADDY CORPORATION IS EXECUTED IN COMPLIANCE WITH STANDARDS PUBLISHED BY THE UNDERWRITERS LABORATORIES, INC. INSOFAR AS APPLICABLE, AND THE LATEST EDITION OF THE NATIONAL ELECTRICAL CODE (NEC). CADDY CORPORATION DOES NOT ACCEPT ANY RESPONSIBILITY FOR THE REQUIREMENTS OF ANY REGIONAL AND/OR LOCAL CODES THAT ADD OR DEVIATE FROM THE ACCEPTED STANDARDS OF THE ABOVE AGENCIES. ANY FIELD WORK RELATING TO THE MODIFICATION OF ELECTRIC OR PLUMBING SYSTEMS, TO MEET REGIONAL OR LOCAL CODE REQUIREMENTS IS TO BE DONE BY OTHERS AND WITHOUT BACK CHARGES TO CADDY CORPORATION, UNLESS THESE CONDITIONS WERE PREVIOUSLY BROUGHT TO OUR ATTENTION AND ARE EXPRESSLY INCLUDED IN OUR WRITTEN QUOTATION.
 ALL WIRING AND PLUMBING AT THE JOB SITE IS THE RESPONSIBILITY OF OTHERS. EQUIPMENT WILL BE CONSTRUCTED IN ACCORDANCE WITH OUR DRAWING(S) WHICH MUST BE APPROVED PRIOR TO FABRICATION. ANY SUBSEQUENT CHANGES REQUIRED MUST BE SUBMITTED TO US IN WRITING AND ACKNOWLEDGED ON OUR STANDARD FORM.



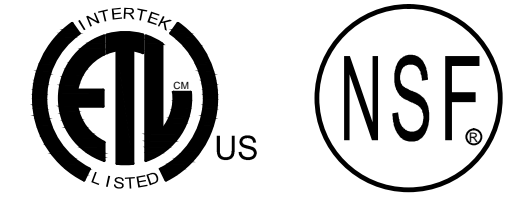
DISHROOM PLAN VIEW
 SCALE: 1/2" = 1'-0"

STA-R-40 TRAY CAPACITY
 14 CARRIERS / 4 TRAYS PER CARRIER
 56 TRAY TOTAL

21-C CONVEYOR IS DESIGNED TO TRANSPORT 14" X 18" OR 15" X 20" FLAT BOTTOM TRAYS. CADDY MUST BE SUPPLIED WITH A SAMPLE TRAY FOR FABRICATION TO BEGIN..

STA-R-40 ACCUMULATOR IS DESIGNED TO ACCUMULATE AND CONVEY 14" X 18" TRAYS. CADDY MUST BE PROVIDED WITH A SAMPLE TRAY FOR FABRICATION TO BEGIN.

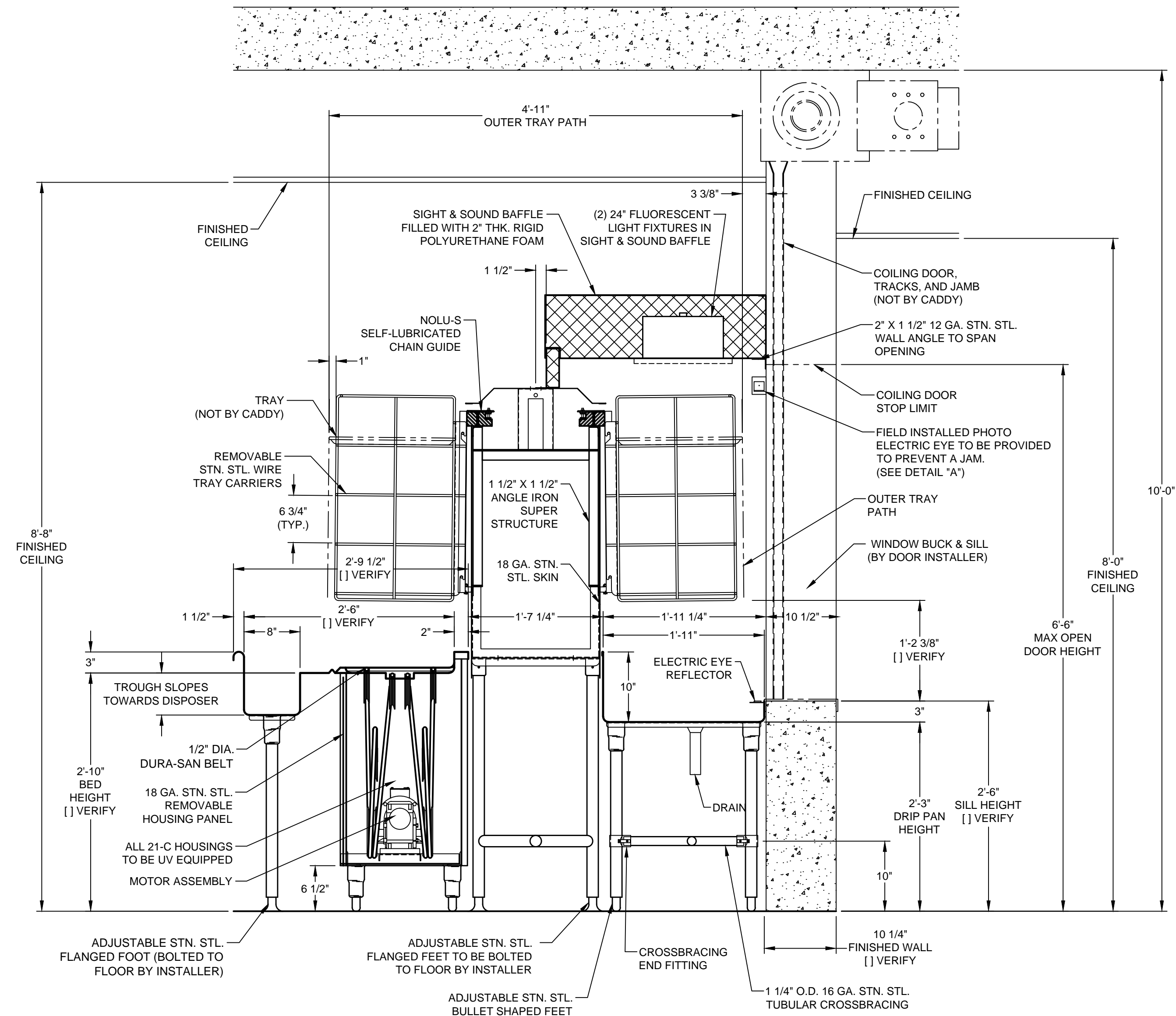
ROLLER CONVEYOR IS DESIGNED TO TRANSPORT 20" X 20" RACKS, AND STACKS OF TRAYS GOING THROUGH THE DISHMACHINE



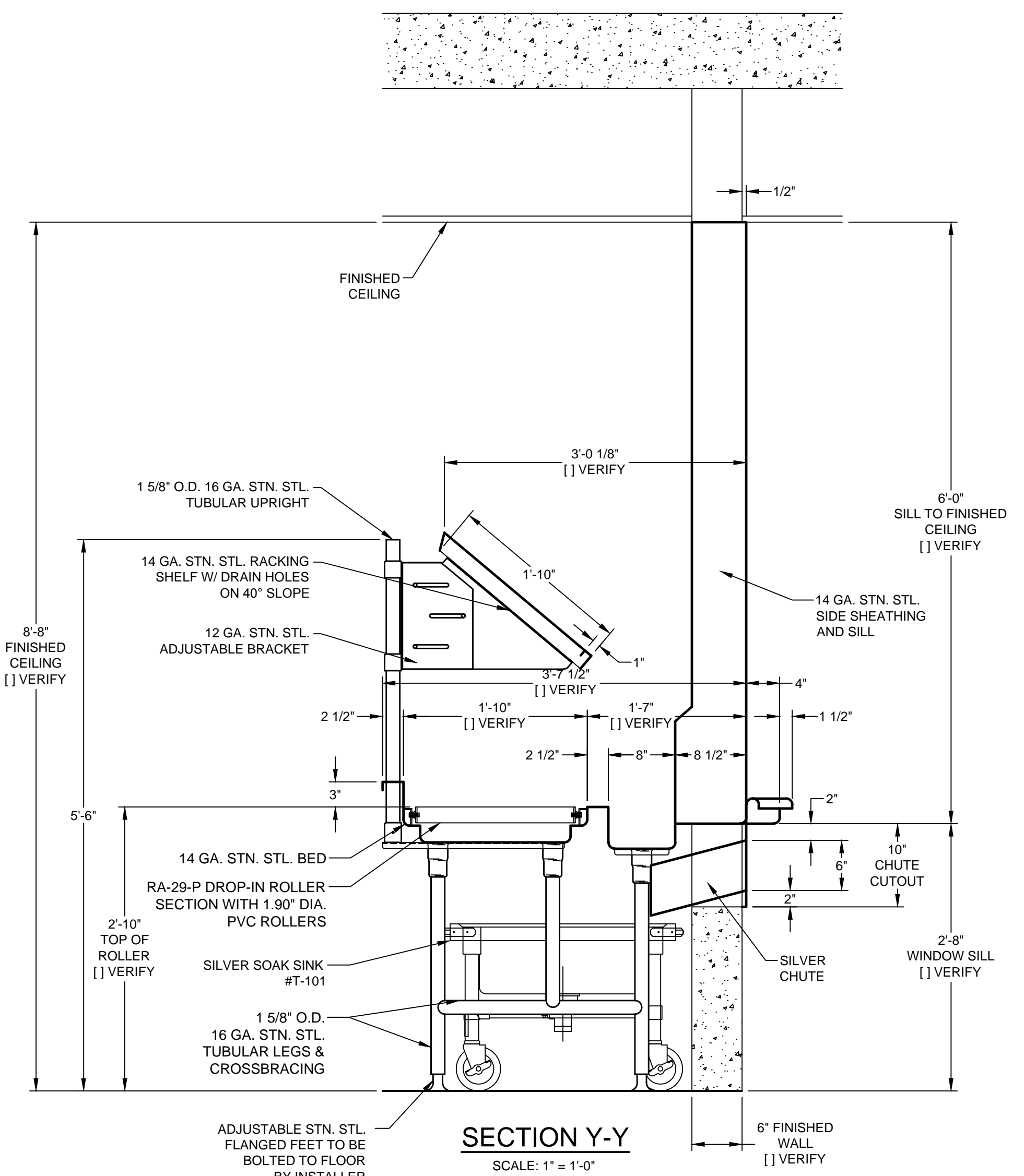
REVISIONS			
REV	DATE	BY	REMARKS
A,B,C,D,E	--	--	SEE SHT 6 OF 6 FOR ALL REVISION DETAILS
F	02/05/14	DME	CHANGED ACCUMULATOR TOTAL CAPACITY TO 56 TRAYS. REMOVED ENCLOSURE. ADJUSTED WALLS
G	02/25/14	DME	MOVED ANNUNCIATOR PANEL FARTHER AWAY FROM THE ELEVATOR SHAFT.
H	03/05/14	DME	CHANGED TRAY DROP HEIGHT AND ADDED COILING DOOR
I	03/07/14	DME	CHANGED CRAWL SPACE 21-C LAYOUT AND ADDED SECTION W-W. REVISED SECTIONS X-X & Y-Y PER DISCUSSIONS WITH CRISTINE & KATJA.
J	03/10/14	DME	REVISED CRAWL SPACE 21-C LAYOUT PER JOHN TANN'S FIELD DIMENSIONS.
K	03/27/14	DME	REVISED CRAWL SPACE 21-C LAYOUT. MOVED "ANGLED" SECTION 2'-0" TO LEFT PER JE DUNN.

CADDY CORPORATION 509 Shertown Road Bridgeport, NJ 08014-0345 Tel: 856-467-4222 internet: www.caddycorp.com P.O. Box 345 Fax: 856-467-5511	
EQUIPMENT SCHEDULE	
(2) CVV-VERTICAL CONVEYORS (3) 21-C SOILED TRAY CONVEYORS	
CADDY NO. 11550-1	ITEM NO. 1
JOB: SAN ANTONIO MILITARY MEDICAL CTR. LOC: SAN ANTONIO, TX CUST: CUST #:	

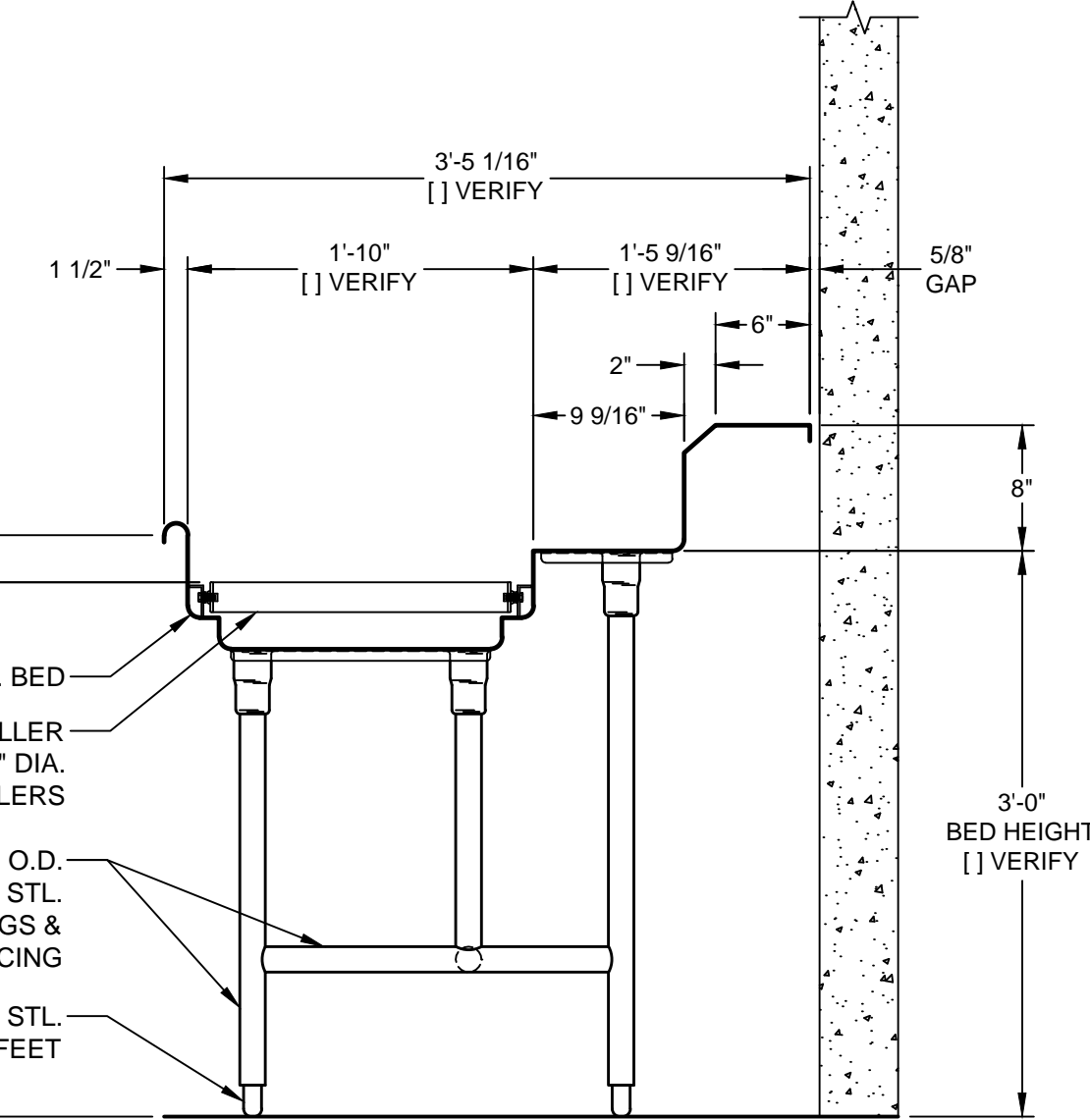
DATE	01/18/13	SCALE	AS NOTED	DWG# D-1-18999	SHT 3 OF 6
DR BY	DME	APPD BY	BPN		



SECTION X-X
SCALE: 1" = 1'-0"

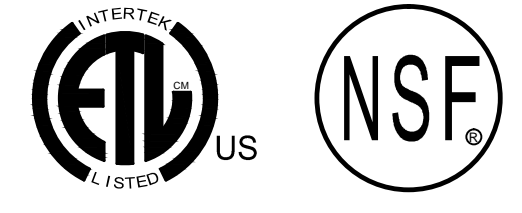


SECTION Y-Y
SCALE: 1" = 1'-0"



SECTION Z-Z
SCALE: 1" = 1'-0"

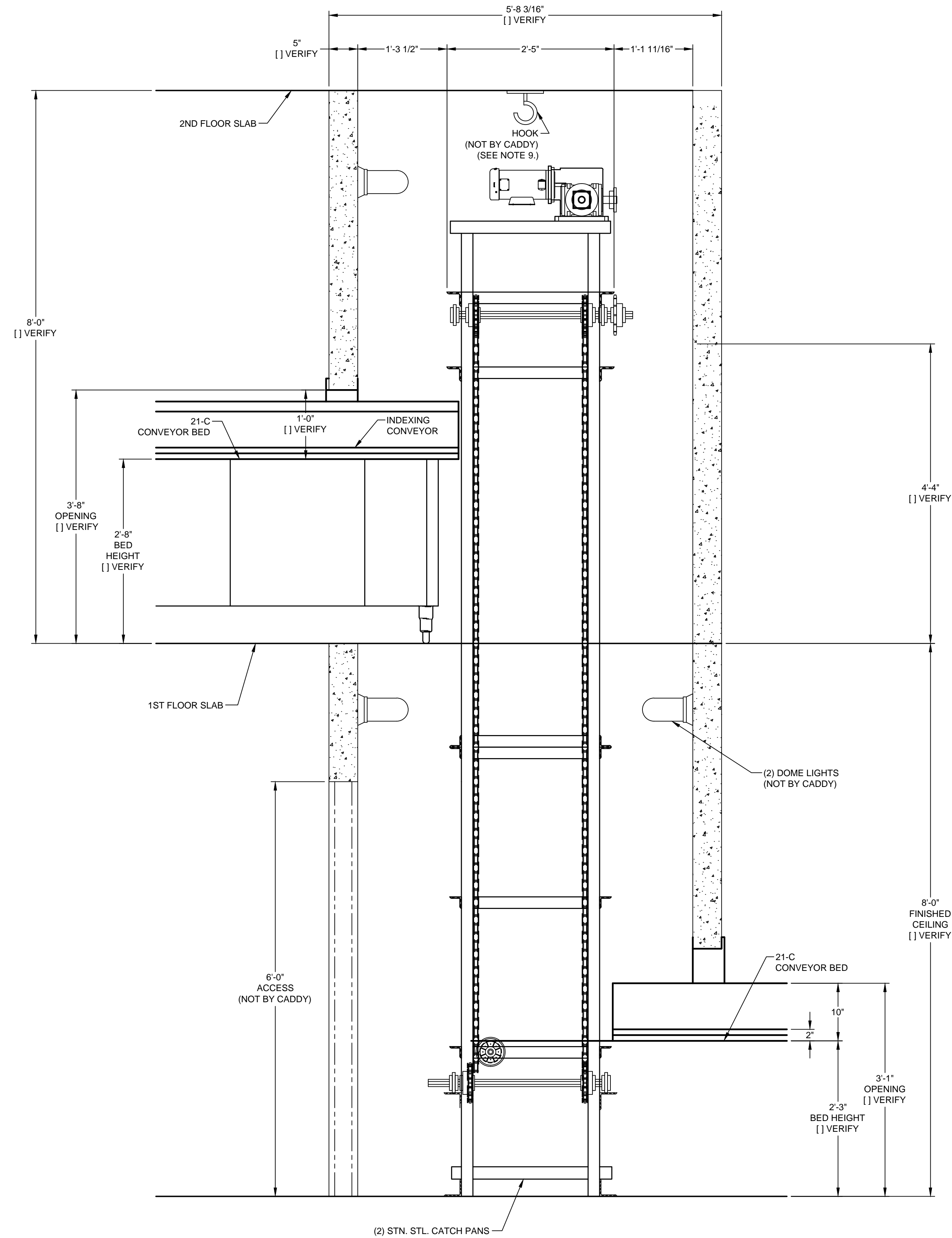
GENERAL CONTRACT CONDITIONS
ELECTRICAL WORK DONE BY CADDY CORPORATION IS EXECUTED IN COMPLIANCE WITH STANDARDS PUBLISHED BY THE UNDERWRITERS LABORATORIES, INC. INsofar AS APPLICABLE, AND THE LATEST EDITION OF THE NATIONAL ELECTRICAL CODE (NEC). CADDY CORPORATION DOES NOT ACCEPT ANY RESPONSIBILITY FOR THE REQUIREMENTS OF ANY REGIONAL AND/OR LOCAL CODES THAT ADD OR DEVIATE FROM THE ACCEPTED STANDARDS OF THE ABOVE AGENCIES. ANY FIELD WORK RELATING TO THE MODIFICATION OF ELECTRIC OR PLUMBING SYSTEMS, TO MEET REGIONAL OR LOCAL CODE REQUIREMENTS IS TO BE DONE BY OTHERS AND WITHOUT BACK CHARGES TO CADDY CORPORATION, UNLESS THESE CONDITIONS WERE PREVIOUSLY BROUGHT TO OUR ATTENTION AND ARE EXPRESSLY INCLUDED IN OUR WRITTEN QUOTATION.
ALL WIRING AND PLUMBING AT THE JOB SITE IS THE RESPONSIBILITY OF OTHERS. EQUIPMENT WILL BE CONSTRUCTED IN ACCORDANCE WITH OUR DRAWING(S) WHICH MUST BE APPROVED PRIOR TO FABRICATION. ANY SUBSEQUENT CHANGES REQUIRED MUST BE SUBMITTED TO US IN WRITING AND ACKNOWLEDGED ON OUR STANDARD FORM.



REVISIONS			
REV	DATE	BY	REMARKS
A.B.C.	D.E	--	SEE SHT 6 OF 6 FOR ALL REVISION DETAILS
F	02/05/14	DME	CHANGED ACCUMULATOR TOTAL CAPACITY TO 56 TRAYS. REMOVED ENCLOSURE. ADJUSTED WALLS
G	02/25/14	DME	MOVED ANNUNCIATOR PANEL FARTHER AWAY FROM THE ELEVATOR SHAFT.
H	03/06/14	DME	CHANGED TRAY DROP HEIGHT AND ADDED COILING DOOR
I	03/07/14	DME	CHANGED CRAWL SPACE 21-C LAYOUT AND ADDED SECTION W-W. REVISED SECTIONS X-X & Y-Y PER DISCUSSIONS WITH CRISTINE & KATJA.
J	03/10/14	DME	REVISED CRAWL SPACE 21-C LAYOUT PER JOHN TANN'S FIELD DIMENSIONS.
K	03/27/14	DME	REVISED CRAWL SPACE 21-C LAYOUT. MOVED "ANGLED" SECTION 2'-0" TO LEFT PER JE DINN.

CADDY CORPORATION 509 Shertown Road Bridgeport, NJ 08014-0345 Tel: 856-467-4222 Internet: www.caddycorp.com		P.O. Box 345 Fax: 856-467-5511	
EQUIPMENT SCHEDULE			
(2) CVV-VERTICAL CONVEYORS (3) 21-C SOILED TRAY CONVEYORS			
CADDY NO.	11550-1	ITEM NO.	1
JOB: SAN ANTONIO MILITARY MEDICAL CTR.			
LOC: SAN ANTONIO, TX			
CUST:			
CUST #:			

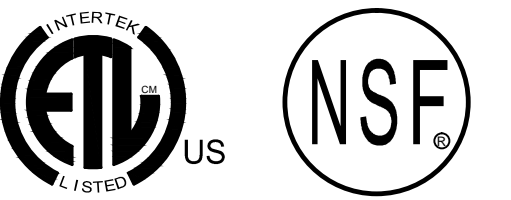
DATE	01/18/13	SCALE	AS NOTED	DWG# D-1-18999	SHT 4 OF 6
DR BY	DME	APP'D BY	<i>BPN</i>		



SECTION A-A

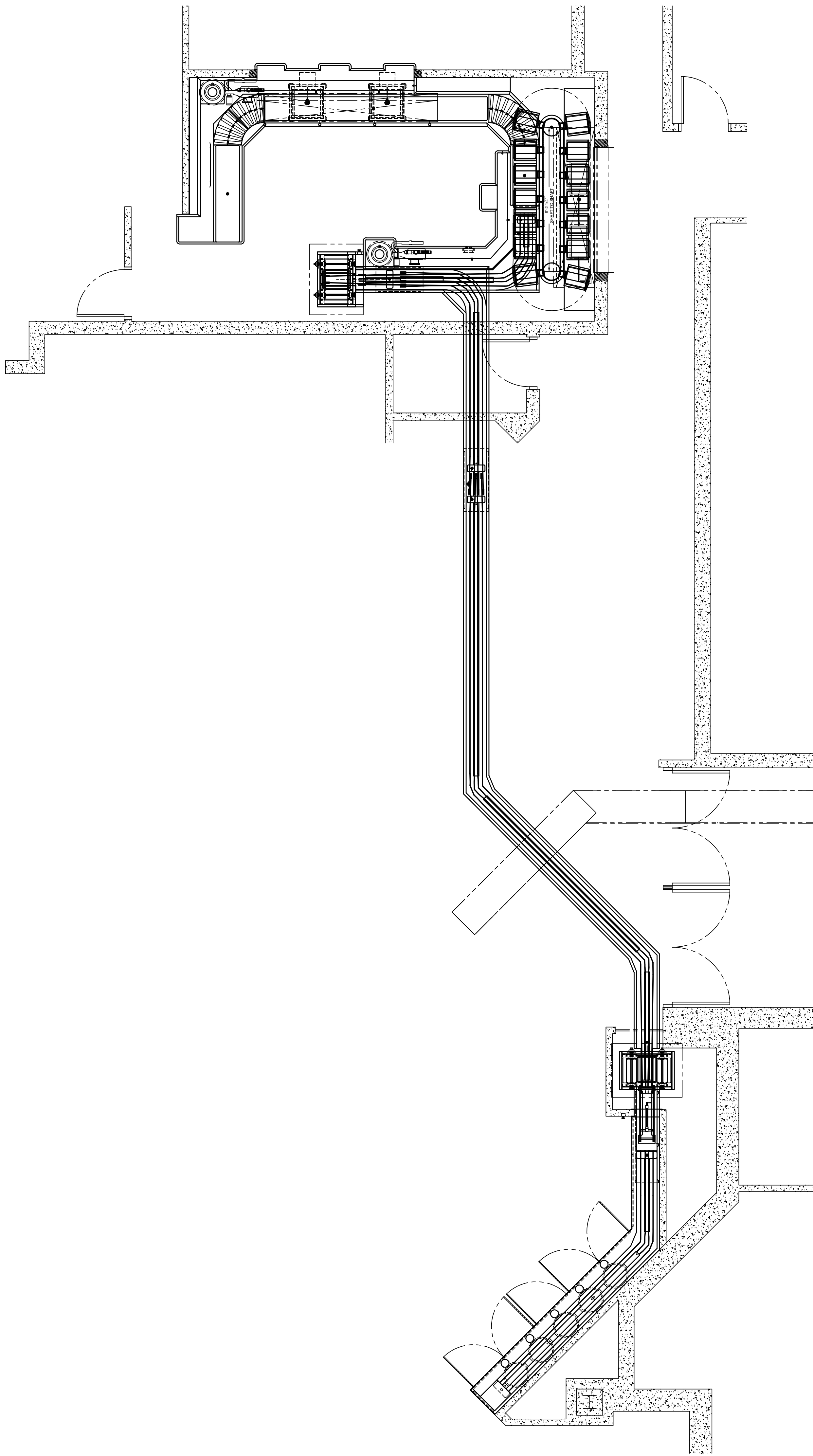
SCALE: 1" = 1'-0"

GENERAL CONTRACT CONDITIONS
 ELECTRICAL WORK DONE BY CADDY CORPORATION IS EXECUTED IN COMPLIANCE WITH STANDARDS PUBLISHED BY THE UNDERWRITERS LABORATORIES, INC. INsofar AS APPLICABLE, AND THE LATEST EDITION OF THE NATIONAL ELECTRICAL CODE (NEC). CADDY CORPORATION DOES NOT ACCEPT ANY RESPONSIBILITY FOR THE REQUIREMENTS OF ANY REGIONAL AND/OR LOCAL CODES THAT ADD OR DEVIATED FROM THE ACCEPTED STANDARDS OF THE ABOVE AGENCIES. ANY FIELD WORK RELATING TO THE MODIFICATION OF ELECTRIC OR PLUMBING SYSTEMS, TO MEET REGIONAL OR LOCAL CODE REQUIREMENTS IS TO BE DONE BY OTHERS AND WITHOUT BACK CHARGES TO CADDY CORPORATION. UNLESS THESE CONDITIONS WERE PREVIOUSLY BROUGHT TO OUR ATTENTION AND ARE EXPRESSLY INCLUDED IN OUR WRITTEN QUOTATION.
 ALL WIRING AND PLUMBING AT THE JOB SITE IS THE RESPONSIBILITY OF OTHERS. EQUIPMENT WILL BE CONSTRUCTED IN ACCORDANCE WITH OUR DRAWING(S) WHICH MUST BE APPROVED PRIOR TO FABRICATION. ANY SUBSEQUENT CHANGES REQUIRED MUST BE SUBMITTED TO US IN WRITING AND ACKNOWLEDGED ON OUR STANDARD FORM.

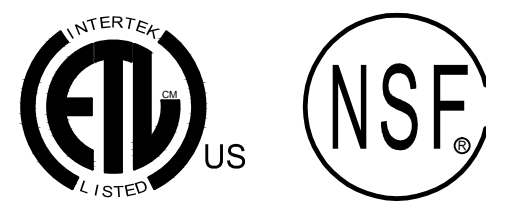


REVISIONS			
REV	DATE	BY	REMARKS
A,B,C,D,E	--	--	SEE SHT 6 OF 6 FOR ALL REVISION DETAILS
F	02/05/14	DME	CHANGED ACCUMULATOR TOTAL CAPACITY TO 56 TRAYS. REMOVED ENCLOSURE. ADJUSTED WALLS
G	02/25/14	DME	MOVED ANNUNCIATOR PANEL FARTHER AWAY FROM THE ELEVATOR SHAFT.
H	03/05/14	DME	CHANGED TRAY DROP HEIGHT AND ADDED COILING DOOR
I	03/07/14	DME	CHANGED CRAWL SPACE 21-C LAYOUT AND ADDED SECTION W-W. REVISED SECTIONS X-X & Y-Y PER DISCUSSIONS WITH CRISTINE & KATJA.
J	03/10/14	DME	REVISED CRAWL SPACE 21-C LAYOUT PER JOHN TANN'S FIELD DIMENSIONS.
K	03/27/14	DME	REVISED CRAWL SPACE 21-C LAYOUT. MOVED "ANGLED" SECTION 2'-0" TO LEFT PER JE DUNN.

CADDY CORPORATION 509 Sherptown Road Bridgeport, NJ 08014-0345 Tel: 856-467-4222 internet: www.caddycorp.com P.O. Box 345 Fax: 856-467-5511	
EQUIPMENT SCHEDULE	
(2) CVV-VERTICAL CONVEYORS (3) 21-C SOILED TRAY CONVEYORS	
CADDY NO. 11550-1	ITEM NO. 1
JOB: SAN ANTONIO MILITARY MEDICAL CTR. LOC: SAN ANTONIO, TX CUST: CUST #:	
DATE: 01/18/13	SCALE: AS NOTED
DR BY: DME	APPD BY: <i>BPN</i>
DWG# D-1-18999	
SHT 5	OF 6



OVERALL VIEW
PLAN VIEW
SCALE: 1/4" = 1'-0"



GENERAL CONTRACT CONDITIONS
ELECTRICAL WORK DONE BY CADDY CORPORATION IS EXECUTED IN COMPLIANCE WITH STANDARDS PUBLISHED BY THE UNDERWRITER'S LABORATORIES, INC. INsofar AS APPLICABLE, AND THE LATEST EDITION OF THE NATIONAL ELECTRICAL CODE (NEC). CADDY CORPORATION DOES NOT ACCEPT ANY RESPONSIBILITY FOR THE REQUIREMENTS OF ANY REGIONAL AND/OR LOCAL CODES THAT ADD OR DEVIATED FROM THE ACCEPTED STANDARDS OF THE ABOVE AGENCIES. ANY FIELD WORK RELATING TO THE MODIFICATION OF ELECTRIC OR PLUMBING SYSTEMS, TO MEET REGIONAL OR LOCAL CODE REQUIREMENTS IS TO BE DONE BY OTHERS AND WITHOUT BACK CHARGES TO CADDY CORPORATION, UNLESS THESE CONDITIONS WERE PREVIOUSLY BROUGHT TO OUR ATTENTION AND ARE EXPRESSLY INCLUDED IN OUR WRITTEN QUOTATION.
ALL WIRING AND PLUMBING AT THE JOB SITE IS THE RESPONSIBILITY OF OTHERS. EQUIPMENT WILL BE CONSTRUCTED IN ACCORDANCE WITH OUR DRAWINGS WHICH MUST BE APPROVED PRIOR TO FABRICATION. ANY SUBSEQUENT CHANGES REQUIRED MUST BE SUBMITTED TO US IN WRITING AND ACKNOWLEDGED ON OUR STANDARD FORM.

REVISIONS				REVISIONS			
REV	DATE	BY	REMARKS	REV	DATE	BY	REMARKS
A	01/25/13	SME	REVISED PER PHONE CONVERSATION WITH CHUCK CLYDE, SCOT HOLLEY, & TOM CARTER ON 01/24/13.	H	03/05/14	DME	CHANGED TRAY DROP HEIGHT AND ADDED COILING DOOR.
B	02/18/13	DME	REVISED UPPER CONVEYOR LAYOUT PER E-MAIL AND PHONE CONVERSATION WITH CHRISTINE HENDERSON.	I	03/07/14	DME	CHANGED CRAWL SPACE 21-C LAYOUT AND ADDED SECTION W-W. REVISED SECTIONS X-X & Y-Y PER DISCUSSIONS WITH CRISTINE & KATJA.
C	05/29/13	DME	ADDED FULL ENCLOSURE TO UPPER 21-C AND CHANGED LIGHTS TO 12V LED STRIP LIGHTS. ADDED UVC LIGHT TO 21-C HOUSINGS PER TOM CARTER.	J	03/07/14	DME	REVISED CRAWL SPACE 21-C LAYOUT PER JOHN TANN'S FIELD DIMENSIONS.
D	12/18/13	DME	CHANGED CVV ELEVATORS TO MOVE TRAY TO AND FROM CRAWL SPACE. RECONFIGURED CRAWL SPACE 21-C AND ADDED STA-R-40 ACCUMULATOR. PER SKETCHES SENT 12/18/13.	K	03/27/14	DME	REVISED CRAWL SPACE 21-C LAYOUT. MOVED 'ANGLED' SECTION 2'-0" TO LEFT PER JE DUNN.
E	01/16/14	DME	ADDED (2) CARRIERS FOR A TOTAL OF 152 TRAY ACCUMULATION PER KATJA BECK.				
F	02/05/14	DME	CHANGED ACCUMULATOR TOTAL CAPACITY TO 56 TRAYS. REMOVED ENCLOSURE. ADJUSTED WALLS				
G	02/25/14	DME	MOVED ANNUNCIATOR PANEL FARTHER AWAY FROM THE ELEVATOR SHAFT.				
				DATE	01/18/13	SCALE	AS NOTED
				DR BY	DME	APP'D BY	<i>BGN</i>

CADDY CORPORAT
509 Sharptown Road P.O.
Bridgeport, NJ 08014-0345
Tel: 856-467-4222 Fax: 856-
internet: www.caddycorp.com

EQUIPMENT SCHEDULE

(2) CVV-VERTICAL CONVEYORS
(3) 21-C SOILED TRAY CONVEYORS

CADDY NO. 11550-1 ITEM NO. 1

JOB: SAN ANTONIO MILITARY MEDICAL
LOC: SAN ANTONIO, TX
CUST:
CUST #:

DWG# D-1-18999 SH
O