

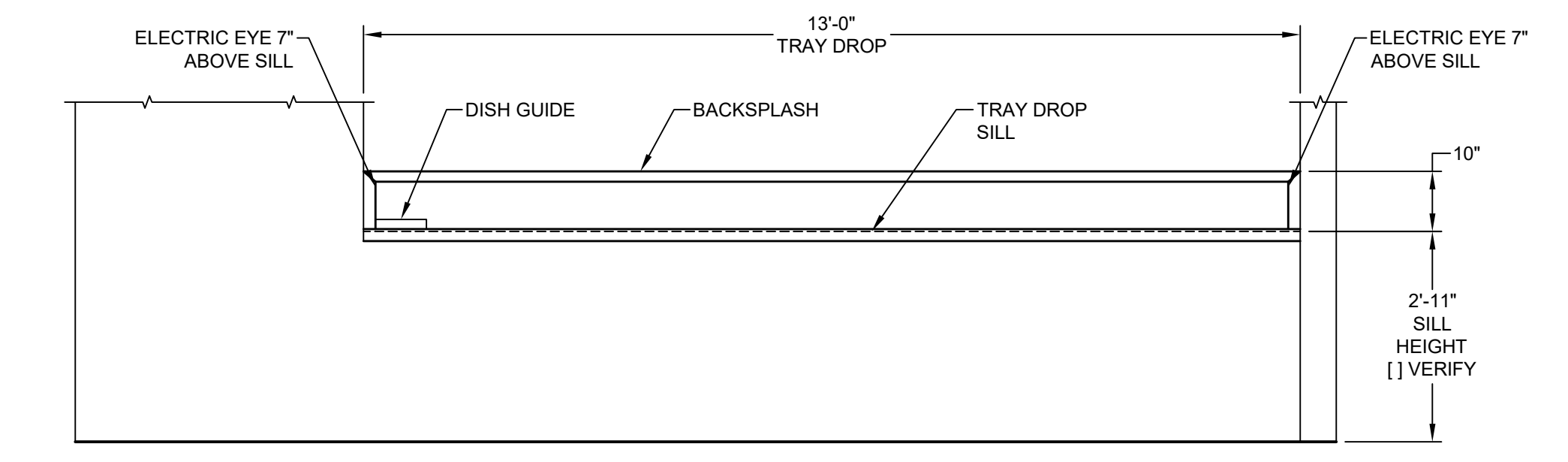
PLAN VIEW
SCALE: 1/2" = 1'-0"

ELEVATED ROLLER-VEYOR IS DESIGNED TO TRANSPORT 20" X 20" RACKS

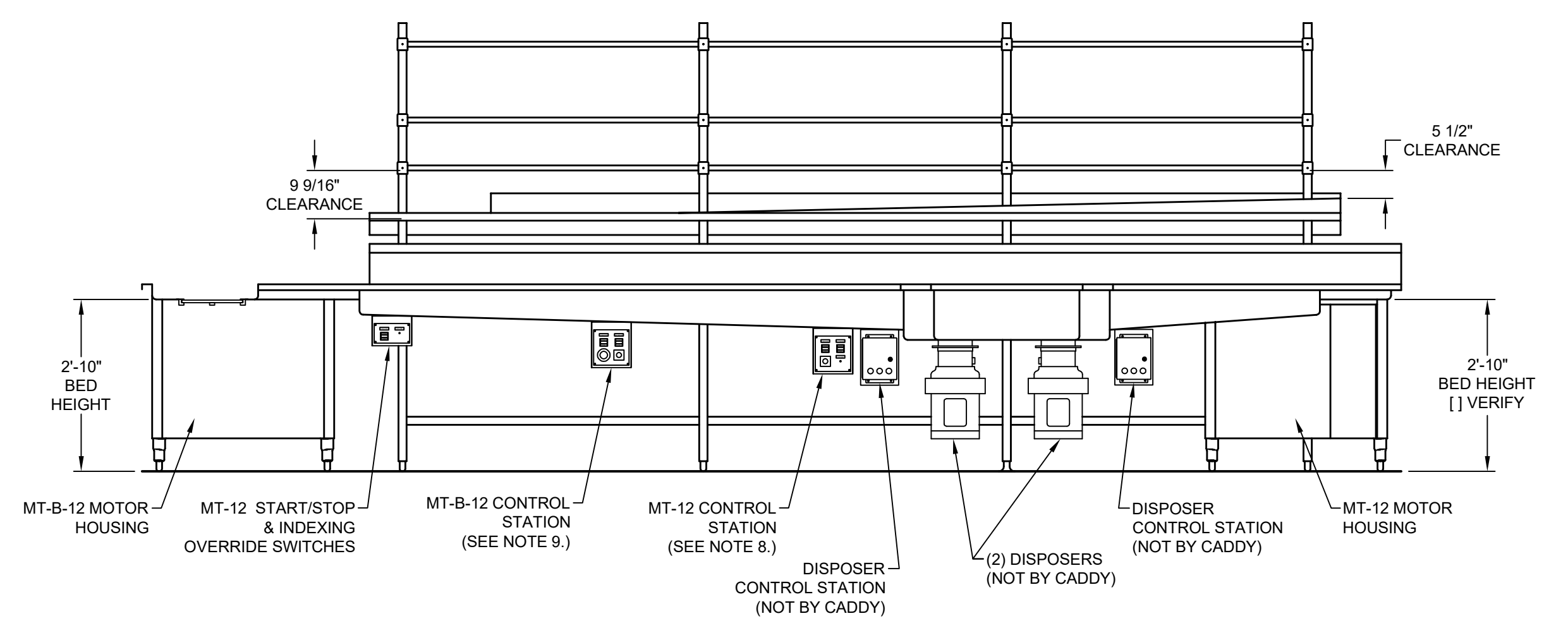
GENERAL CONTRACT CONDITIONS
ELECTRICAL WORK DONE BY CADDY CORPORATION IS EXECUTED IN COMPLIANCE WITH STANDARDS PUBLISHED BY THE UNDERWRITERS LABORATORIES, INC. INSOFAR AS APPLICABLE, AND THE LATEST EDITION OF THE NATIONAL ELECTRICAL CODE (NEC). CADDY CORPORATION DOES NOT ACCEPT ANY RESPONSIBILITY FOR THE REQUIREMENTS OF ANY REGIONAL AND/OR LOCAL CODES THAT ADD OR DEVIATE FROM THE ADOPTED STANDARDS OF THE ABOVE AGENCIES. ANY FIELD WORK RELATING TO THE MODIFICATION OF ELECTRIC OR PLUMBING SYSTEMS, TO MEET REGIONAL OR LOCAL CODE REQUIREMENTS IS TO BE DONE BY OTHERS AND WITHOUT BACK CHARGES TO CADDY CORPORATION. UNLESS THESE CONDITIONS WERE PREVIOUSLY BROUGHT TO OUR ATTENTION AND ARE EXPRESSLY INCLUDED IN OUR WRITTEN QUOTATION. ALL WIRING AND PLUMBING AT THE JOB SITE IS THE RESPONSIBILITY OF OTHERS. EQUIPMENT WILL BE CONSTRUCTED IN ACCORDANCE WITH OUR DRAWING(S) WHICH MUST BE APPROVED PRIOR TO FABRICATION. ANY SUBSEQUENT CHANGES REQUIRED MUST BE SUBMITTED TO US IN WRITING AND ACKNOWLEDGED ON OUR STANDARD FORM.

NOTES

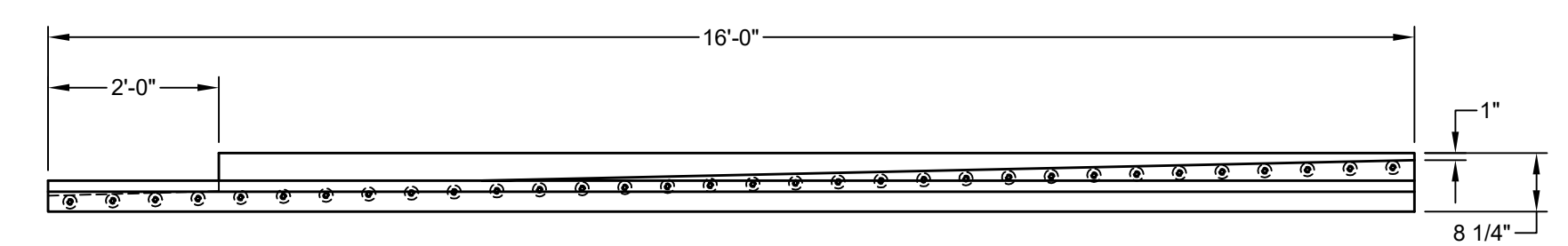
- [X] VERIFY ROUGH-IN SCHEDULE.
- EACH [] VERIFY ON THIS DRAWING HAS BEEN CONFIRMED. YOUR FABRICATION APPROVAL OF THIS DRAWING INDICATES YOUR ACCEPTANCE AS SHOWN.
- CONVEYORS ARE TO BE E.T.L. LISTED WITH LABELS AFFIXED.
- MT-12 & MT-B-12 CONVEYOR SYSTEM WILL BE SHIPPED IN (3) PIECES AS INDICATED IN PLAN VIEW.
- MT-12 CONVEYOR IS DESIGNED TO TRANSPORT UP TO 16" DIA. PLATES, CUPS, AND CUTLERY.
- MT-B-12 CONVEYOR IS DESIGNED TO TRANSPORT STACKED AND LOOSE DISHES, TRAYS AND SIMILAR ITEMS GOING THROUGH THE DISHWASHING MACHINE.
- ELEVATED DROP-IN ROLLER-VEYOR IS DESIGNED TO TRANSPORT 20" X 20" RACKS.
- MT-12 CONTROL STATION INCLUDES CONVEYOR START/STOP SWITCH & VARIABLE SPEED CONTROL, BELT WASHER ON/OFF SWITCH, AND INDEXING OVER-RIDE SWITCH.
- MT-B-12 CONTROL STATION INCLUDES CONVEYOR START/STOP SWITCH & VARIABLE SPEED CONTROL, BELT WASHER ON/OFF SWITCH, AND PALM JOG SWITCH.
- MT-B-12 TO BE CONTROLLED THROUGH A FOOT SWITCH OPERATED BY "PRESSING TO RUN" AND "RELEASING" TO STOP.
- BELT WASHERS OPERATE AUTOMATICALLY WHILE CONVEYORS "START" AND BELT WASHERS "ON" BUTTONS ARE DEPRESSED. BELT WASHERS INCLUDES ON/OFF SWITCHES AND "ON" INDICATOR LIGHTS.
- PROVIDE CADDY WITH MANUFACTURER'S NAME, MAKE, MODEL NUMBER AND DETAILED SHOP DRAWINGS OF DISPOSERS. PLEASE SHIP DISPOSER RINGS TO CADDY FOR WELDING TO SINK.



ELEVATION A-A
SCALE: 1/2" = 1'-0"



ELEVATION B-B
SCALE: 1/2" = 1'-0"



ROLLER ELEVATION B-B
SCALE: 1/2" = 1'-0"

MT-12 CONVEYOR IS DESIGNED TO TRANSPORT UP TO 16" DIA. PLATES, CUPS, AND CUTLERY. SPECIFY SIZE & MAKE OF PLATES. PLEASE PROVIDE CADDY WITH SAMPLE PLATE.

MT-B-12 CONVEYOR IS DESIGNED TO TRANSPORT STACKED AND LOOSE DISHES, TRAYS, AND SIMILAR ITEMS GOING THROUGH THE DISHWASHING MACHINE



ROUGH-IN SCHEDULE

NOTE: STUB UP FLOOR ROUGH-INS 4" A.F.F. ROUGH-INS EXTENDING FROM WALLS TO BE 10" A.F.F.

SYM	QTY	DESCRIPTION
A	4	1 1/2" I.P.S. WASTE
B	2	120V., 60HZ., 1PH., 3/4 HP., 15 AMPS.
C	2	1/2" I.P.S. HOT WATER
D	2	1/2" I.P.S. COLD WATER
E	2	1/2" I.P.S. DIFFUSER 7/8" DIA. HOLE BY CADDY FISHER WATER INLET #2905
F	3	1/2" I.P.S. GUSHERHEAD 7/8" DIA. HOLE BY CADDY FISHER GUSHER HEAD #2906

REVISIONS

REV	DATE	BY	REMARKS
A	04/01/15	DME	REVISED PER "REVISE AND RESUBMIT" DRAWING.
B	05/06/15	DME	ADDED 4 TROUGH COVERS AND SHORTENED TABLE BY 1". RELOCATED CONTROL STATIONS AND ELECTRIC EYES. ALL REVISIONS PER DRAWING RECEIVED 04/29/15.
C	02/19/16	DME	REVISED FOR FABRICATION PER "APPROVAL" DRAWINGS.



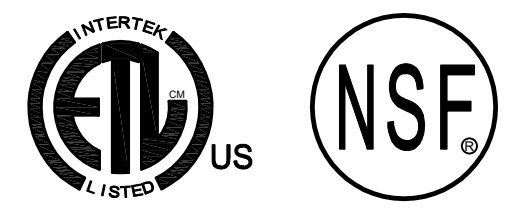
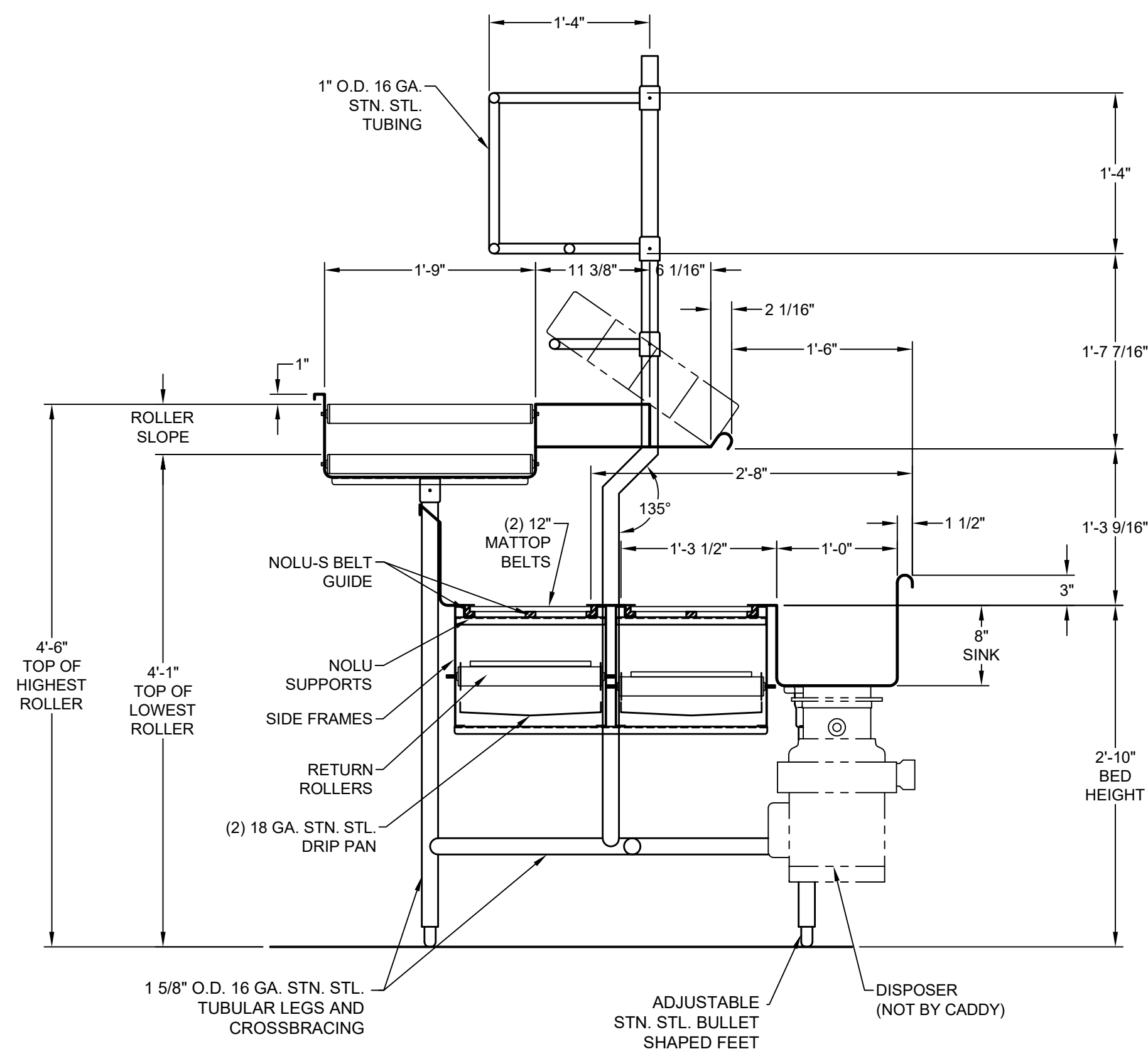
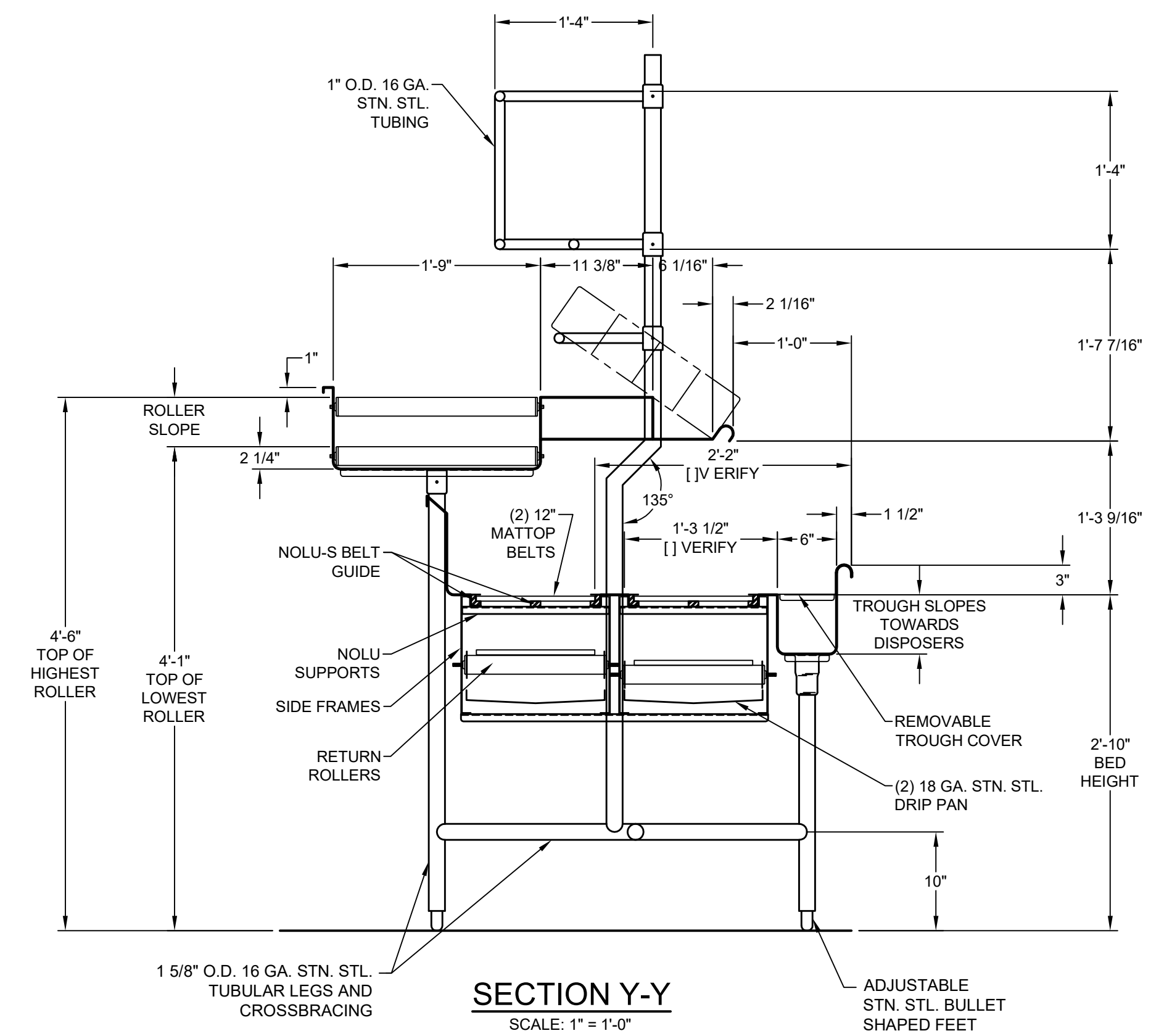
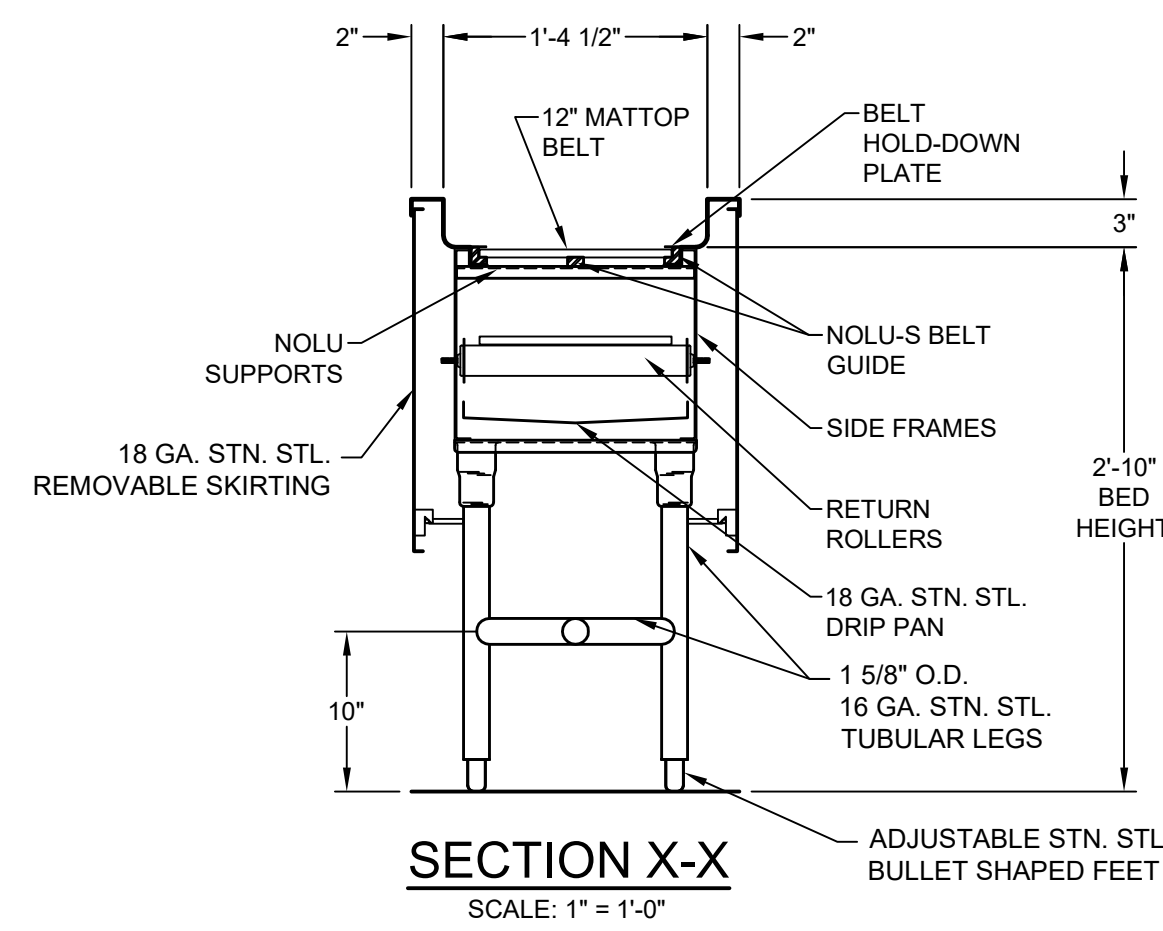
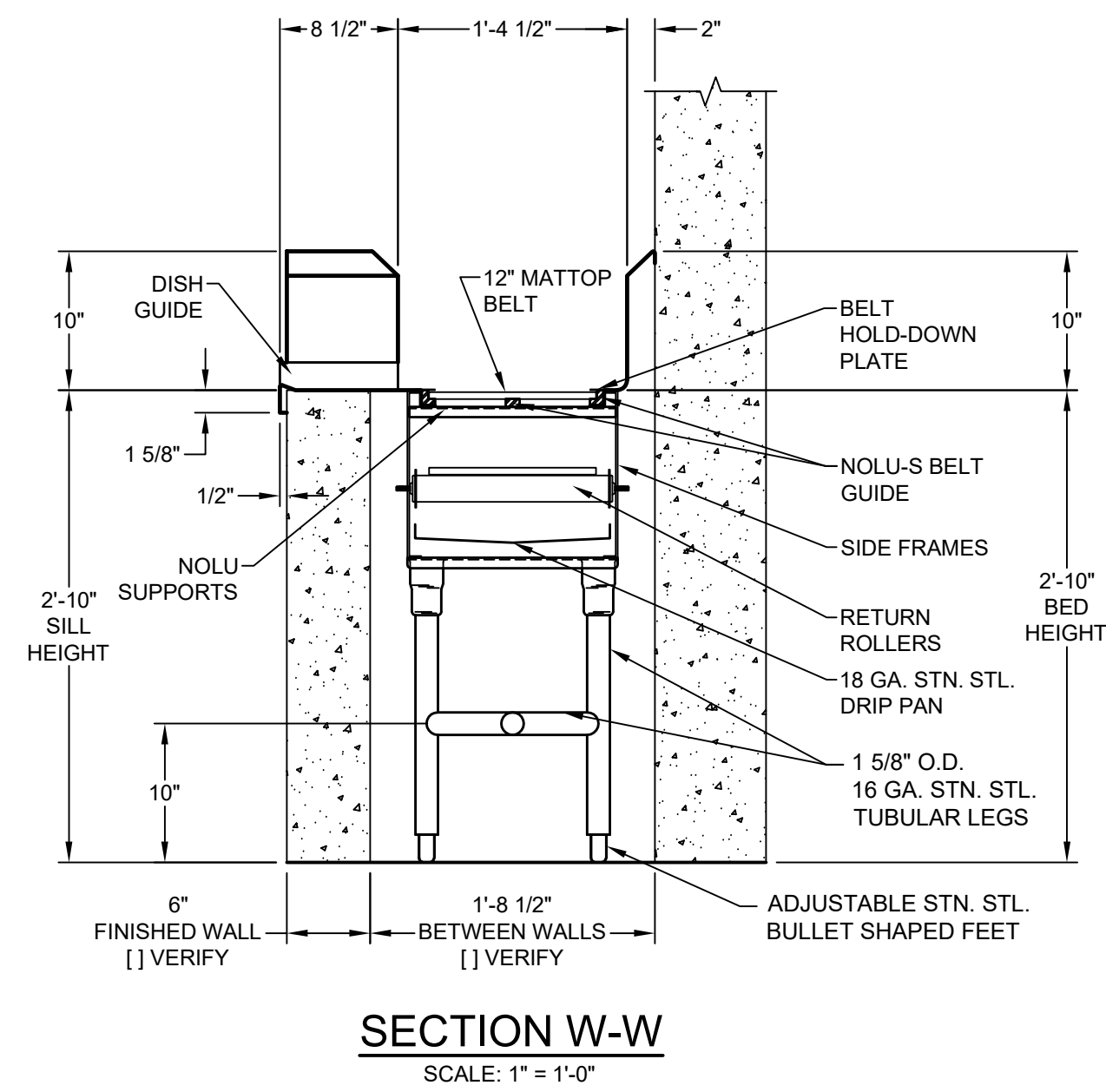
EQUIPMENT SCHEDULE

MT-12 SOILED WARES CONVEYOR, MT-B-12 BUSSING-VEYOR, & GRAVITY ROLLER-VEYOR

CADDY NO. 12976-1 ITEM NO. 124

JOB: UNIVERSITY OF WISCONSIN
LOC:
CUST: SUPERIOR EQUIPMENT & SUPPLY
CUST #:

DWG# D-1-19740



GENERAL CONTRACT CONDITIONS
ELECTRICAL WORK DONE BY CADDY CORPORATION IS EXECUTED IN COMPLIANCE WITH STANDARDS PUBLISHED BY THE UNDERWRITERS LABORATORIES, INC. INSOFAR AS APPLICABLE, AND THE LATEST EDITION OF THE NATIONAL ELECTRICAL CODE (NEC). CADDY CORPORATION DOES NOT ACCEPT ANY RESPONSIBILITY FOR THE REQUIREMENTS OF ANY REGIONAL AND/OR LOCAL CODES THAT ADD OR DEVIATED FROM THE ADOPTED STANDARDS OF THE ABOVE AGENCIES. ANY FIELD WORK RELATING TO THE MODIFICATION OF ELECTRIC OR PLUMBING SYSTEMS, TO MEET REGIONAL OR LOCAL CODE REQUIREMENTS IS TO BE DONE BY OTHERS AND WITHOUT BACK CHARGES TO CADDY CORPORATION. UNLESS THESE CONDITIONS WERE PREVIOUSLY BROUGHT TO OUR ATTENTION AND ARE EXPRESSLY INCLUDED IN OUR WRITTEN QUOTATION.
ALL WIRING AND PLUMBING AT THE JOB SITE IS THE RESPONSIBILITY OF OTHERS. EQUIPMENT WILL BE CONSTRUCTED IN ACCORDANCE WITH OUR DRAWING(S) WHICH MUST BE APPROVED PRIOR TO FABRICATION. ANY SUBSEQUENT CHANGES REQUIRED MUST BE SUBMITTED TO US IN WRITING AND ACKNOWLEDGED ON OUR STANDARD FORM.

REVISIONS			
REV	DATE	BY	REMARKS
A	04/01/15	DME	REVISED PER "REVISE AND RESUBMIT" DRAWING.
B	05/06/15	DME	ADDED 4 TROUGH COVERS AND SHORTENED TABLE BY 1". RELOCATED CONTROL STATIONS AND ELECTRIC EYES. ALL REVISIONS PER DRAWING RECEIVED 04/29/15.
C	02/19/16	DME	REVISED FOR FABRICATION PER "APPROVAL" DRAWINGS.

CADDY CORPORATION
509 SHARPTOWN ROAD, P.O. BOX 345
BRIDGEPORT, NJ 08014
TEL: (856) 467-4222 FAX: (856) 467-5511
WWW.CADDYCORP.COM

EQUIPMENT SCHEDULE

MT-12 SOILED WARES CONVEYOR,
MT-B-12 BUSSING-VEYOR, & GRAVITY
ROLLER-VEYOR

CADDY NO. 12976-1 ITEM NO. 124

JOB: UNIVERSITY OF WISCONSIN
LOC:
CUST: SUPERIOR EQUIPMENT & SUPPLY
CUST #:

DATE: 12/17/14 SCALE: AS NOTED
DR BY: DME APP'D BY: *BGM*

DWG# D-1-19740

SHT 2
OF 2